

.Annex 5

## Design and Specifications of Supplies and Materials to be Procured for the 2024 Census of Population and Community-Based Monitoring System

### 1. 2024 POPCEN-CBMS Mug (300 pcs)



**Specification(s):**  
Regular White Ceramic



## 2. 2024 POPCEN-CBMS Foldable Fan with Pouch (200 pcs)



### Specification(s):

Material: Nylon

Color: Light Blue

Size : 10" Diameter

new

OK

Cancel

Add to Swatches

Color Libraries

current

H: 190 °  L: 69

S: 53 %  a: -24

B: 78 %  b: -18

R: 94 C: 60 %

G: 181 M: 10 %

B: 199 Y: 19 %

# 5eb5c7 K: 0 %

### 3. 2024 POPCEN-CBMS Tote bag (300 pcs)



#### Specification(s):

Canvas Tote Bag Plain (With Expand Side Bottom) Katsa sling bag.  
Color: White / Light Blue / Black  
Size: Medium (34\*38\*10 cm)

**Note: 100 pcs for each color/design**

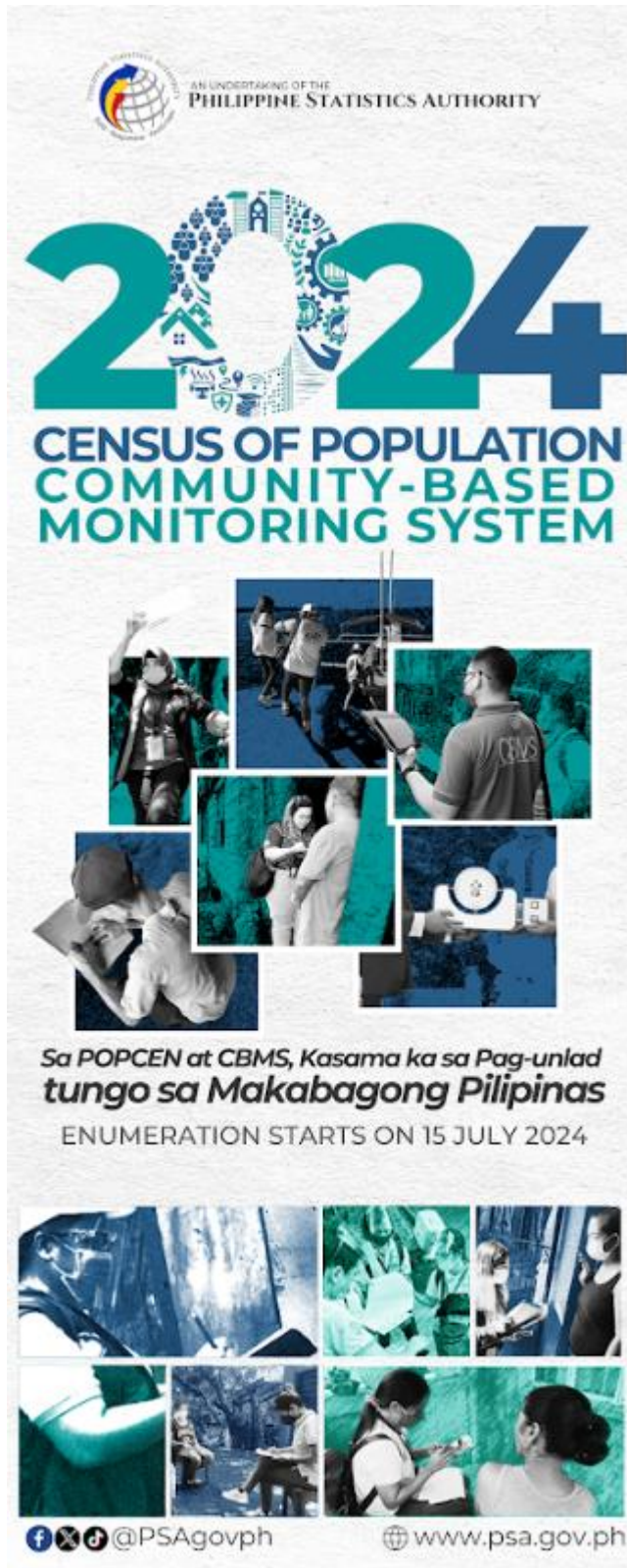
#### 4. 2024 POPCEN-CBMS Banner (2pcs)



1pc

#### Specification(s):

Size: 2.6ft. x 6ft.  
polyester/polyethylene/polyurethane  
CAF tripod can be reused



1pc

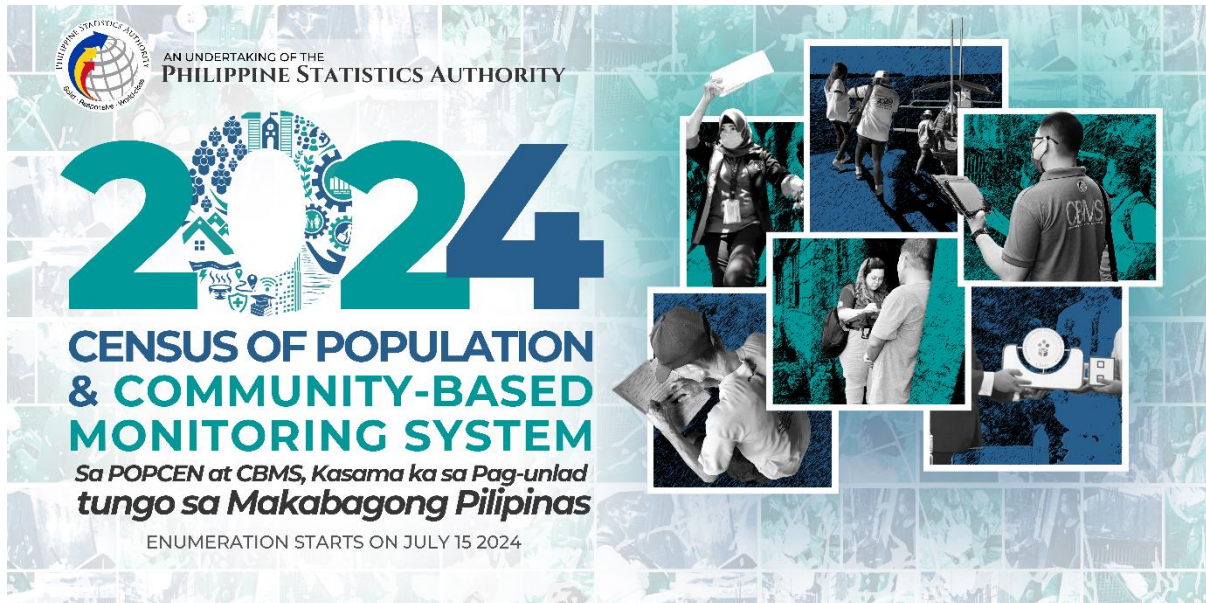
**Specification(s):**

Size: 2.6ft. x 6ft.  
polyester/polyethylene/polyurethane  
CAF tripod can be reused



## 5. 2024 POPCEN-CBMS Streamer (2pcs)

1 pc



1 pc



### Specification(s):

4 x 8 feet, any water-resistant material

## 6. 2024 POPCEN-CBMS Brochure (1000 pcs)



Front



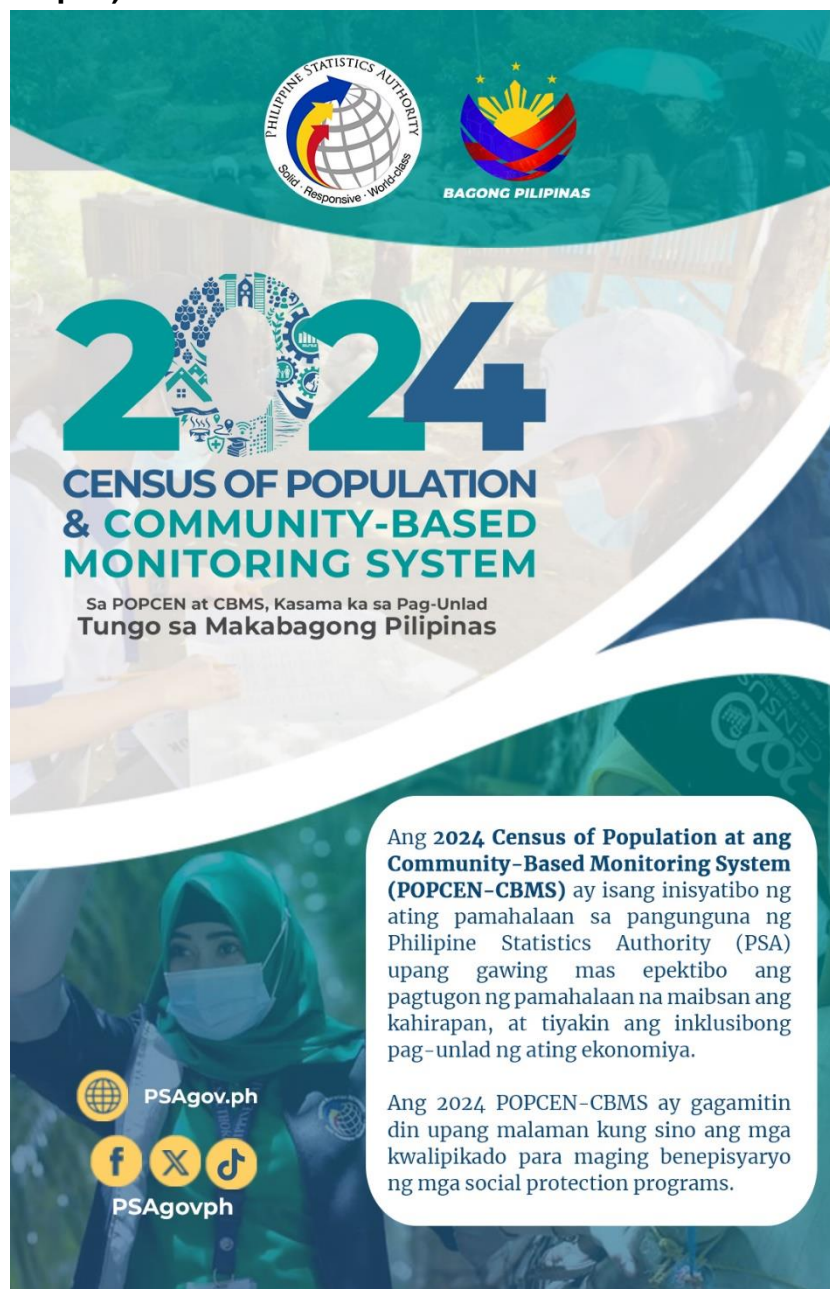
Back

### Specification(s):

Size: German legal, 8.5x13 Inches,  
 Paper: Matte Paper  
 Color: Full colored

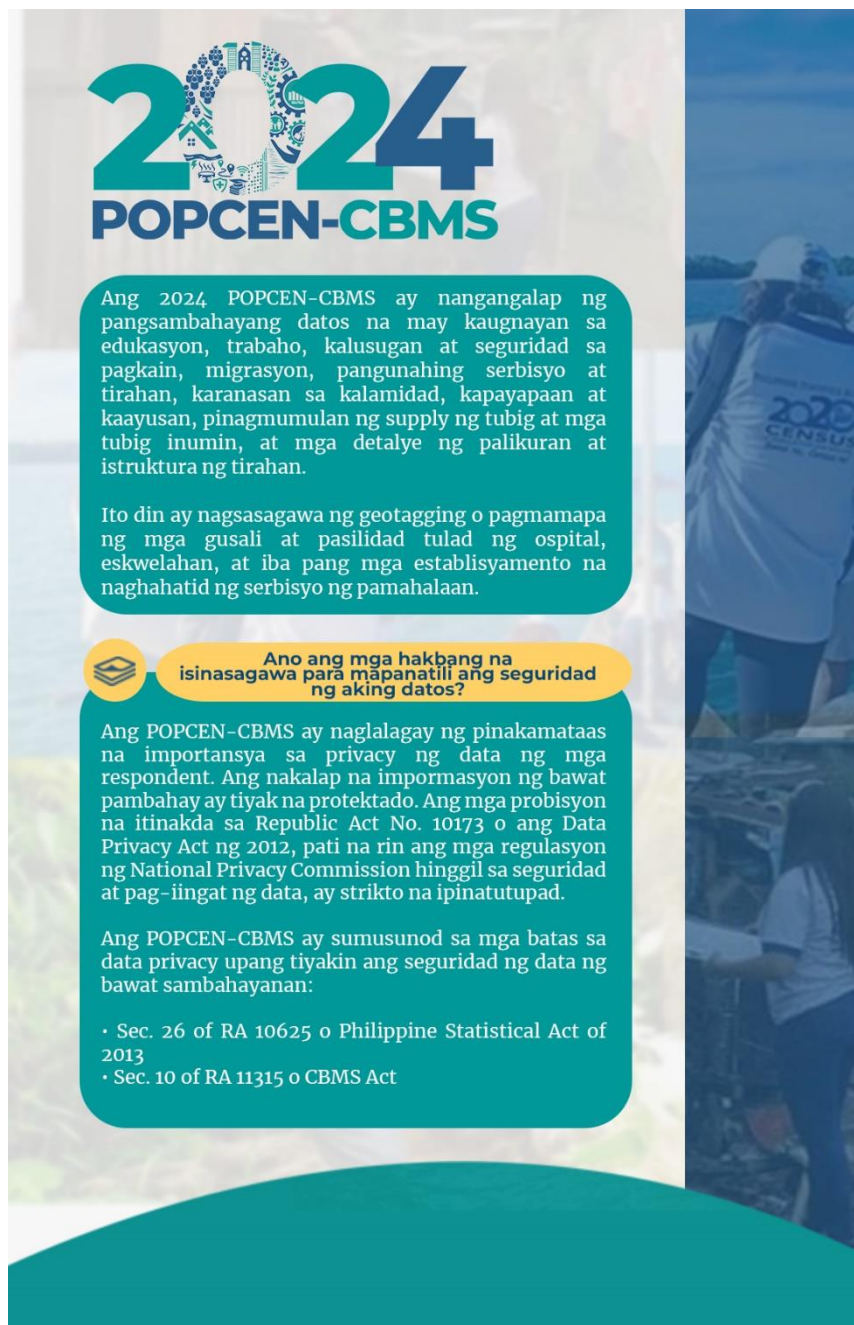


## 7. Primer (1000 pcs)



Front





**Back**

**Specification(s):**

Size:, 8.5x 5.5 Inches,

Paper: Matte Paper

Color: Full colored