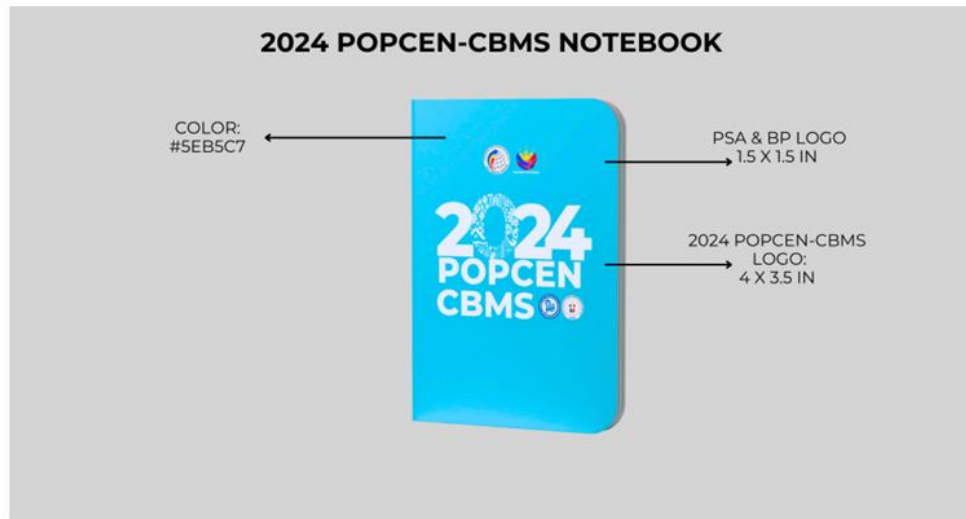


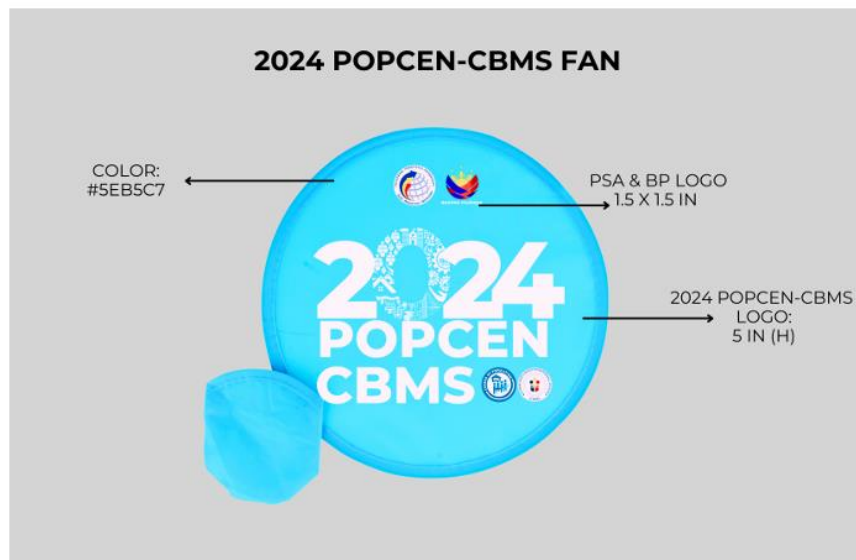
1. 2024 POPCEN-CBMS Notebook



Specification(s):

A5 240x140mm, 80 sheets
Material: Paper
Hard cover
Color: Light Blue

2. 2024 POPCEN-CBMS Foldable Fan



Specification(s):

Material: Nylon
Color: Light Blue
Size: 10" Diameter

3. 2024 POPCEN-CBMS Tote Bag



Specification(s):

Canvas Tote Bag Plain (With Expand Side Bottom) Katsa sling bag.
Color: Black, Blue and White
Size: Medium (34*38*10 cm)

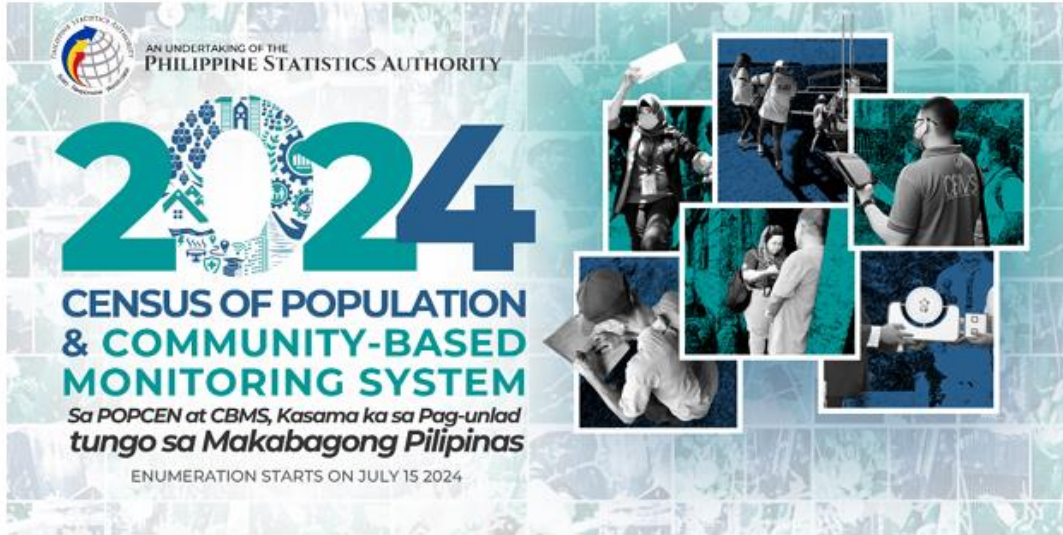
4. 2024 POPCEN-CBMS Streamer



Specification(s):

Size: 2ft. x 5ft. polyester/polyethylene/polyurethane

5. 2024 POPCEN-CBMS Banner



Specification(s):

4 x 8 feet, any water resistant material

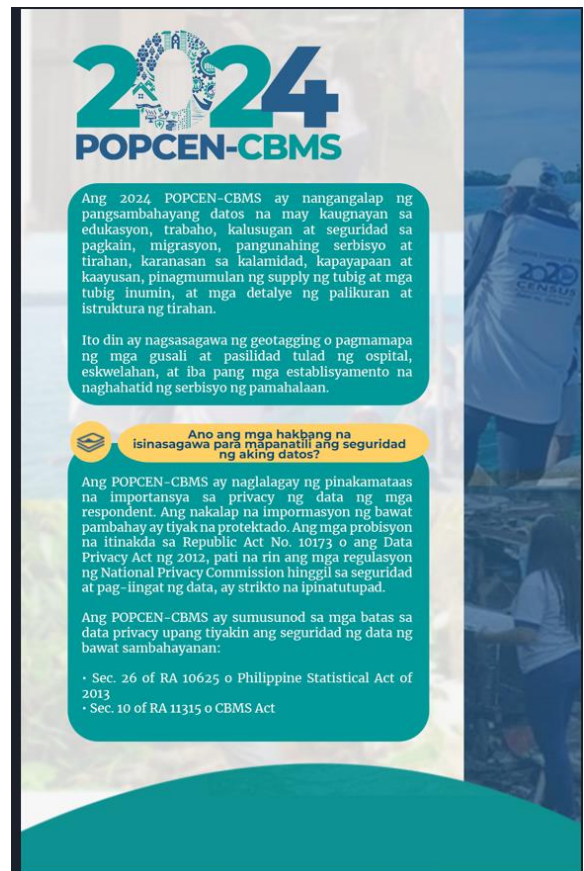
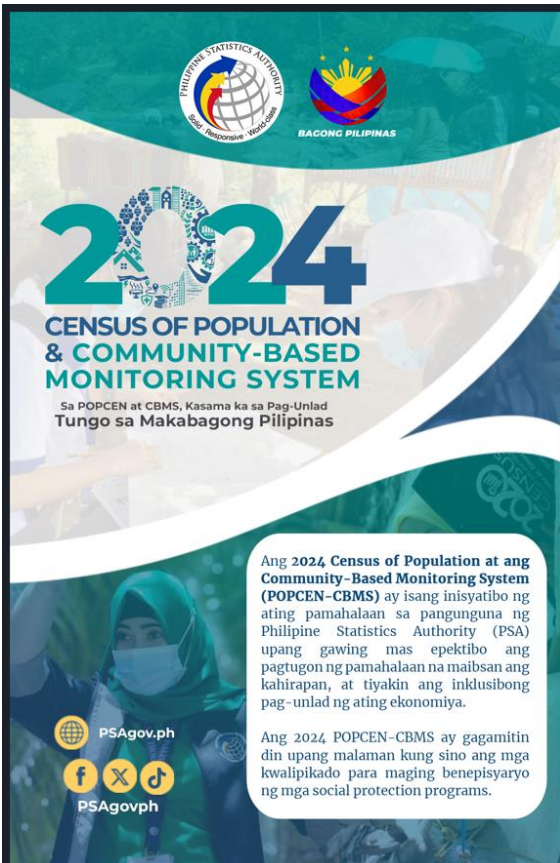
6. 2024 POPCEN-CBMS Primer

SPECIFICATIONS:

Size: 8.5x 5.5 Inches,
Paper: Matte Paper
Color: Full colored

FRONT

BACK



7. 2024 POPCEN-CBMS Brochure

Size: 8.5 X 11

Paper: Matte Paper

Full Colored

About POPCEN and CBMS:

The Census of Population is a complete enumeration of households and institutional living quarters in the country, which is designed to take an inventory of the total population of the Philippines.

The Community-Based Monitoring System refers to an organized technology-based system of collecting, processing, and validating necessary disaggregated data that may be used for planning, program implementation, and impact monitoring at the local level.

Contact Us

Overview:

The 2024 Census of Population and Community-Based Monitoring System (POPCEN-CBMS) represents a pivotal endeavor in the Philippines' commitment to comprehensive data collection and community development.

The simultaneous conduct of the two Philippine Statistics Authority-led statistical activities aims to capture a holistic understanding of our population and their needs, serving as a crucial data source for policymakers, planners, and decision-makers.

2024
CENSUS OF POPULATION & COMMUNITY-BASED MONITORING SYSTEM

Sa POPCEN at CBMS, Kasama ka sa Pag-unlad tungo sa Makabagong Pilipinas