

2024 POPCEN-CBMS Brochure

Specification(s):

Size: German legal, 8.5x13 Inches,
Paper: 80 gsm, Matte Paper, 3 fold
Color: Full colored



About POPCEN and CBMS:

The Census of Population is a complete enumeration of households and institutional living quarters in the country, which is designed to take an inventory of the total population of the Philippines.

The Community-Based Monitoring System refers to an organized technology-based system of collecting, processing, and validating necessary disaggregated data that may be used for planning, program implementation, and impact monitoring at the local level.

Overview:

The 2024 Census of Population and Community-Based Monitoring System (POPCEN-CBMS) represents a pivotal endeavor in the Philippines' commitment to comprehensive data collection and community development.

The simultaneous conduct of the two Philippine Statistics Authority-led statistical activities aims to capture a holistic understanding of our population and their needs, serving as a crucial data source for policymakers, planners, and decision-makers.

Contact Us

popcen@psa.gov.ph
PSA Headquarters, PSA Complex, East Avenue, Ortigas, Quezon City
www.psa.gov.ph
@PSAGOVPH

2024 CENSUS OF POPULATION & COMMUNITY-BASED MONITORING SYSTEM
Sa POPCEN at CBMS, Kasama ka sa Pag-unlad tungo sa Makabagong Pilipinas

2024 CENSUS OF POPULATION & COMMUNITY-BASED MONITORING SYSTEM

Rationale of the 2024 POPCEN-CBMS

Through the 2024 POPCEN-CBMS, we will be able to:

1. Update the population to reflect the current demography;
2. Streamline the list of beneficiaries of government social protection programs thereby reducing leakages;
3. Provide information on the distribution of shares of Local Government Units in the National Tax Allocation;
4. Aid in the implementation of the recently signed Republic Act No. 11964, or the "Automatic Income Classification of Local Government Units Act"; and
5. Guide the efficient use of government resources.

Use of Data from the 2024 POPCEN-CBMS:

The data derived from the 2024 POPCEN-CBMS will form as the basis for formulating policies, programs, and projects in various sectors such as health, education, employment, housing, and infrastructure, among others. These data may be used as a guide for resource allocation, political and administrative unit creation, redistricting, and business site selection. Additionally, the statistics generated may facilitate research, academic studies, and population growth projections at both national and sub-national levels, enabling comprehensive analysis and informed decision-making.

These statistics will also inform targeted and tailor-fitted interventions and drive inclusive development strategies. One major use of the 2024 POPCEN-CBMS is the updating of beneficiary registries of social protection programs.

Legal Bases:

Pursuant to Republic Act No. (RA) 10625, known as the Philippine Statistical Act of 2013, and RA 11315, known as the CBMS Act of 2019, the Philippine Statistics Authority (PSA) will conduct the 2024 POPCEN-CBMS from July to September 2024. Moreover, approving bodies such as the PSA Board and the CBMS Council had passed respective resolutions authorizing the joint conduct of these two statistical activities.

Data Privacy and Security:

The right to privacy of every respondent remains inviolable. All information pertaining to the respondent is confidential and shall not be disclosed or divulged to any third person or entity unless authorized or allowed by law.

Stringent measures are in place to safeguard the privacy and security of the data to be collected during the 2024 POPCEN-CBMS. Provisions outlined in R.A. 10173 (Data Privacy Act of 2012) and other relevant statutory laws ensure that personal information remains confidential and will be used for its legitimate purpose only. Breaches of confidentiality are subject to penalties, underscoring the commitment to data security.

Connection to the Sustainable Development Goals (SDGs):

The 2024 POPCEN-CBMS aligns closely with the Sustainable Development Goals (SDGs), serving as a vital tool in tracking progress towards achieving these global targets. Locally disaggregated data has the potential to provide insights into SDG progress and various development indicators at the grassroots level. By generating data on key SDG indicators, the initiative contributes to our collective efforts to build a more sustainable and equitable future for all.

Obligations of the Respondent

As stipulated in Section 25 of RA 10625, respondents of primary data collection activities such as the POPCEN are obligated to provide truthful and complete answers to statistical inquiries. The gathering, consolidation, and analysis of such data shall be conducted in a truthful and credible manner.

Failure or refusal to provide accurate information may result in penalties, as outlined in RA No. 10625. Individuals who fail to cooperate with statistical inquiries may face imprisonment for a period of one year and a fine of one hundred thousand pesos (P100,000.00).

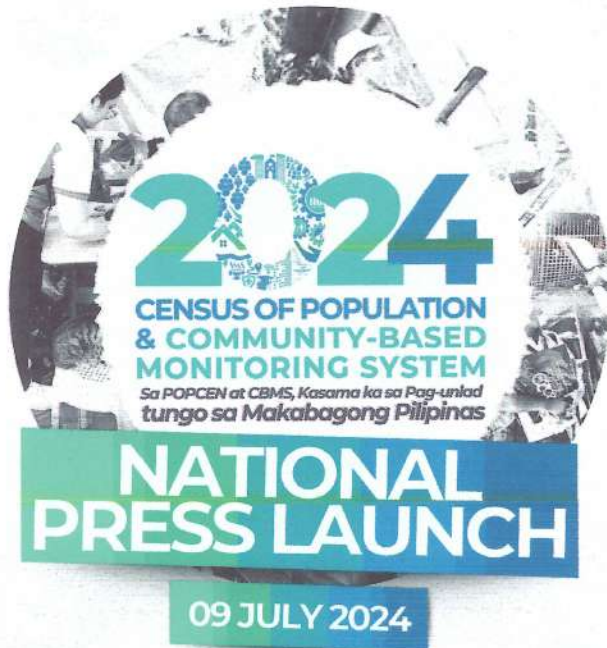
For the CBMS, the citizens participating in the data collection shall be fully informed of the nature and extent of processing intended for his or her personal data. Truthful responses to the CBMS are important for the LGUs and NGAs to craft appropriate policies and programs.

It is imperative for respondents to understand that their responses are vital in informing government policies, programs, and resource allocation decisions. By providing accurate information, respondents contribute to the effective and equitable distribution of resources and the development of evidence-based policies aimed at addressing the needs of communities nationwide.

Enumeration Period

The 2024 POPCEN-CBMS will be conducted from July to September 2024. All persons to be enumerated as members of a household or residents of institutional living quarters will be those alive as of 12:01 am of 01 July 2024.

2 copies of Banners



   @PSAgovph

 www.psa.gov.ph

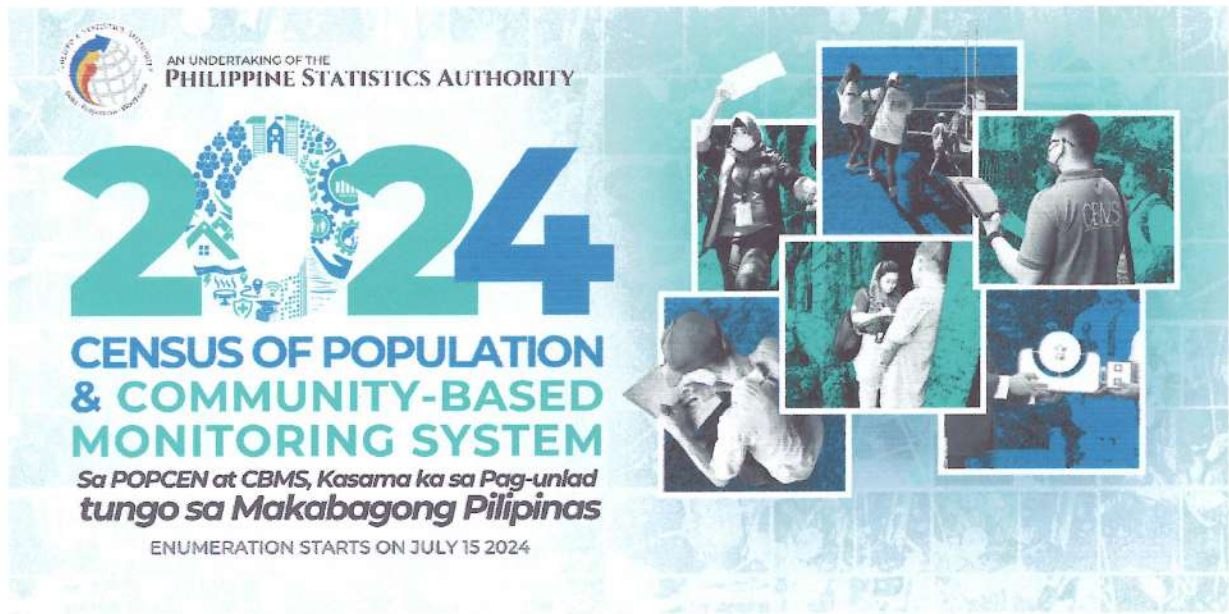
2 copies of Streamers



 www.psa.gov.ph

 @PSAgovph

2024 POPCEN-CBMS Streamer (3 copies)



Specification(s):

4 x 8 feet, any water resistant material