

**Additional Details for Customized Polo Shirt with PSA and PhilSys Logo
and Pocketless Pants**

Combination of White and Green



Combination of White and Blue



Combination of Black and White



Hex Color Code

Green - #1C4324

Blue - #152238

White - FFFFFFFF

Inverted #e3bcd9	25% saturated #174821	Grayscale #303030
25% lighter #23542d	Original #1c4324	25% darker #16361d
Web safe: green #008000	25% desaturated #203f2e	HTML: darkgreen #006400

Inverted #eaddc7	25% saturated #11213c	Grayscale #272727
25% lighter #1a2b46	Original #152238	25% darker #111b2d
Web safe: navy #000080	25% desaturated #182335	HTML: midnightblue #191970

PSA Logo and PhilSys Logo



Customized Polo Shirt with PhilSys logo at front (left side) and PSA logo at the upper back

Polo Shirt Measurement in Inches

SIZE CHART	S	M	L	XL	XXL	XXXL
Chest Width:	18"	19"	20"	21"	22"	23"
Body Length:	22"	23"	24"	25"	26"	27"

Polo 1: Combination of White and Green (200 pcs)

Polo 2: Combination of White and Blue (200 pcs)

Polo 3: Combination of Black and White (200 pcs)

Sizes:

S = 20 pcs

M = 30 pcs

L = 60 pcs

XL = 60 pcs

XXL = 20 pcs

XXXL = 10 pcs

TOTAL= 200 pcs (per color combination)

200 x 3 = 600 polo shirts

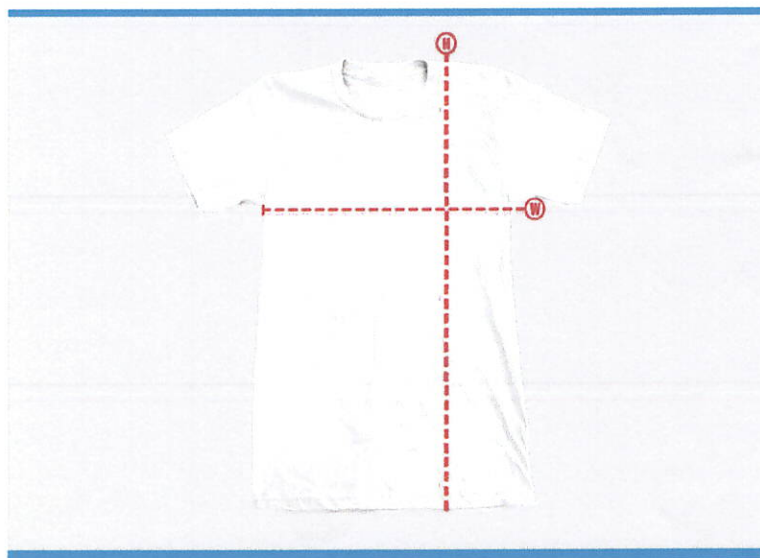
Sleeve: Elastic/Garterized or Loose/Relaxed

Dimension: PSA Logo = 2" height x 2" width

PhilSys Logo = 2.95" height x 3.59" width

Logo: Embroidered

Type of fabric: Honeycomb



High Quality Pocketless Pants



Material: 63% Polyester / 34% Cotton / 3% Spandex Poplin

- Elastic Waist, Drawstring Waist
- Bi-Stretch, Durable
- Machine Wash, Fade Resistant
- Unisex Mid Rise, Unisex Modern Fit
- Tapered Leg Pant
- Color Black

SIZE CHART	WAIST
S	28-30
M	31-33
L	34-37
XL	38-41
XXL	42-45
XXXL	46-49

Sizes:

S = 10 pcs

M = 30 pcs

L = 50 pcs

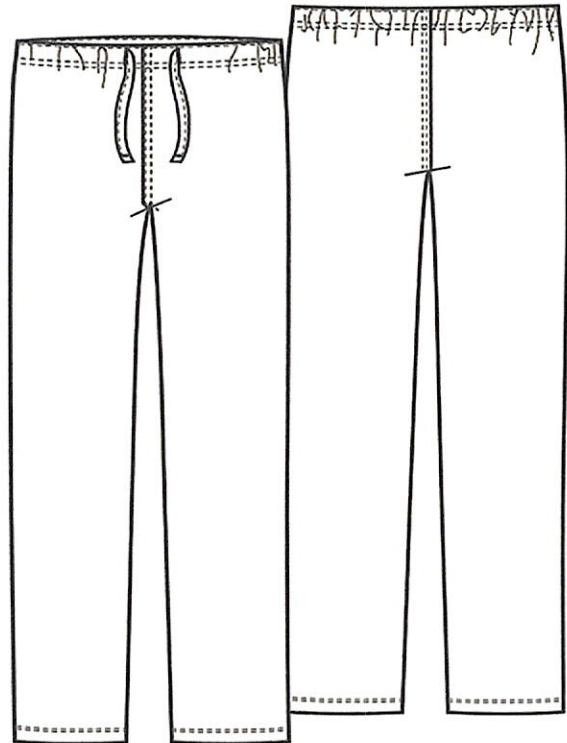
XL = 60 pcs

XXL = 30 pcs

XXXL = 20 pcs

TOTAL= 200 pcs

200 x 2 = 400 pocketless pants



Customized Polo Shirt with PSA and PhilSys Logo and Pocketless Pants

- 200 sets
- Set (3 polo shirts & 2 pocketless pants)

**Note: For the winning bidder, kindly please coordinate with the end-user for the approval of the design/layout (logo, quality, sizes. etc.) before producing a mass quantity of the requested items at email address ldpmd.staff@psa.gov.ph .*