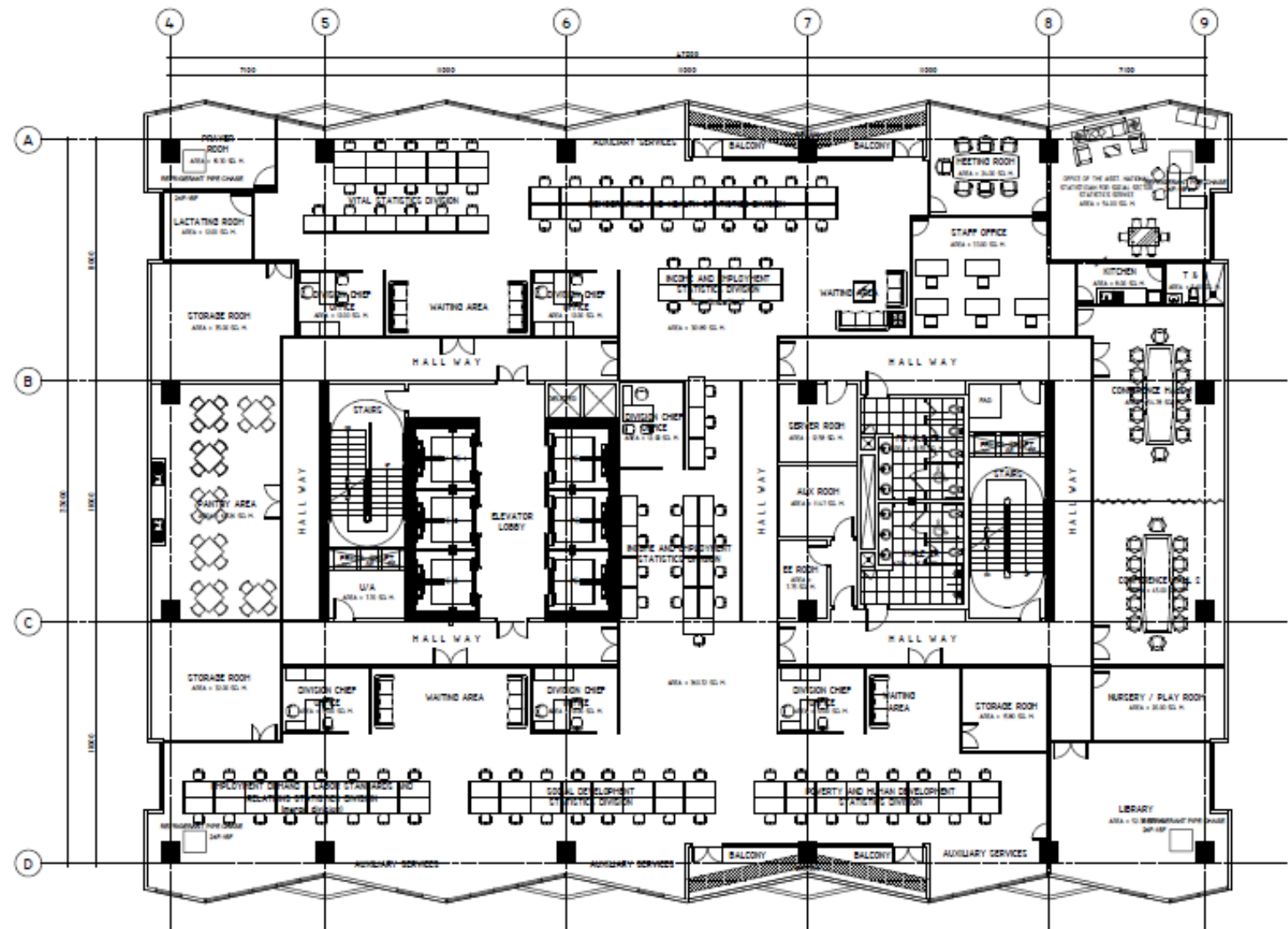


MECHANICAL PLANS

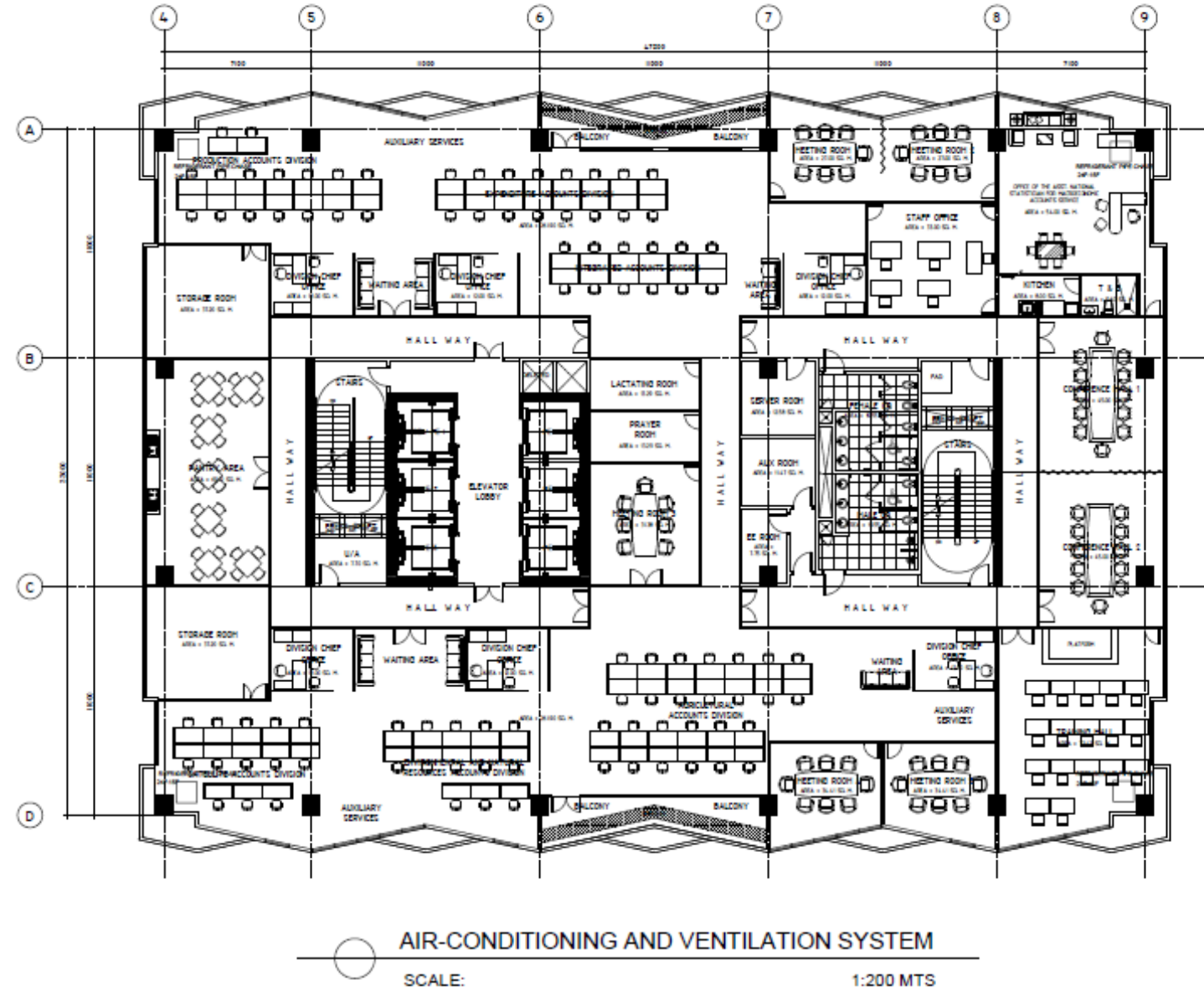


AIR-CONDITIONING AND VENTILATION SYSTEM  
SCALE: 1:200 MTS

SOCIAL SECTOR STATISTICS SERVICE

TOTAL FLOOR AREA = 1,557.60 sq.m.  
20th FLOOR

## MECHANICAL PLANS

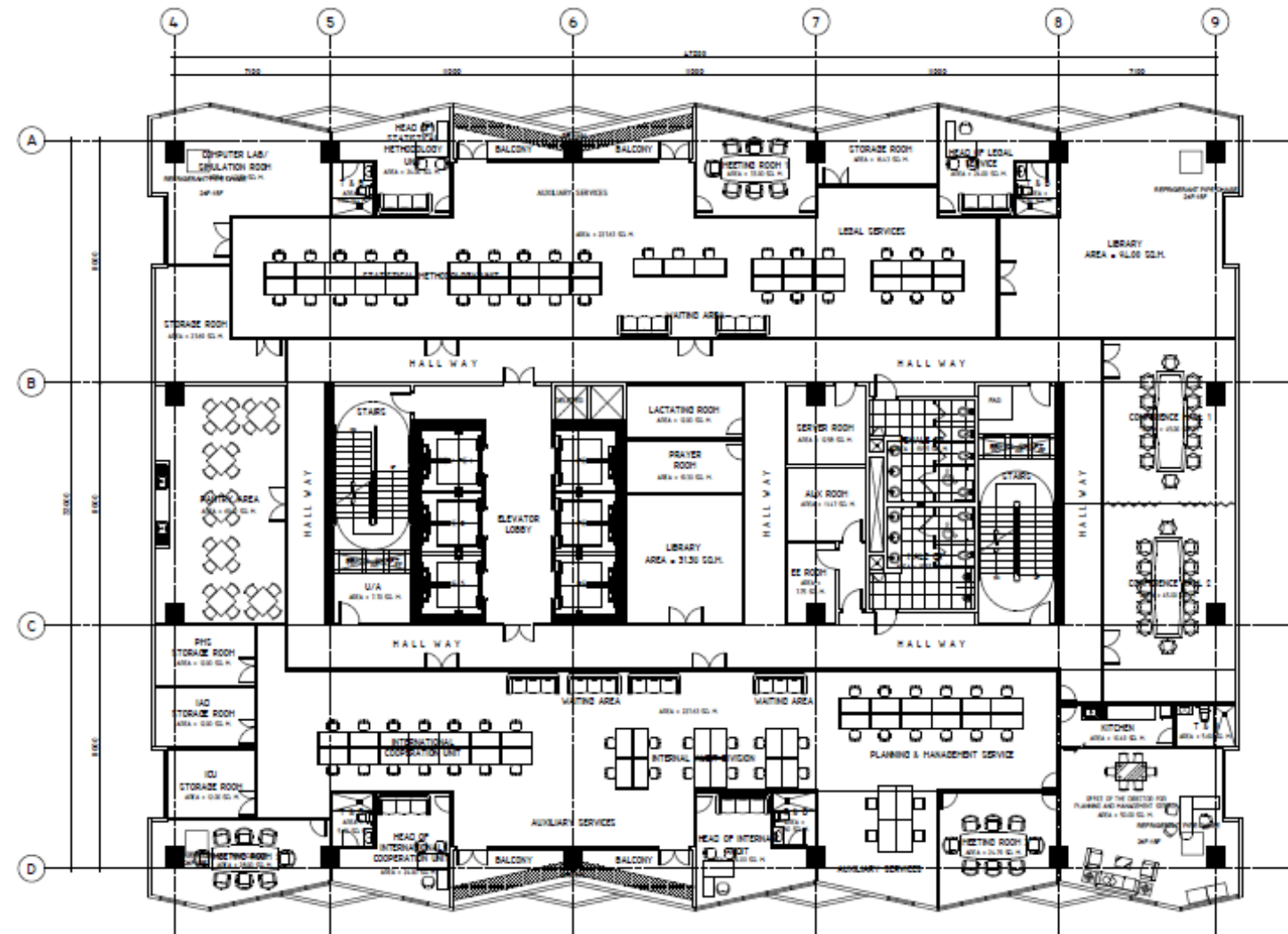



MACROECONOMIC ACCOUNTS SERVICE

TOTAL FLOOR AREA = 1,557.60 sq.m.

21st FL00R

## MECHANICAL PLANS



 AIR-CONDITIONING AND VENTILATION SYSTEM

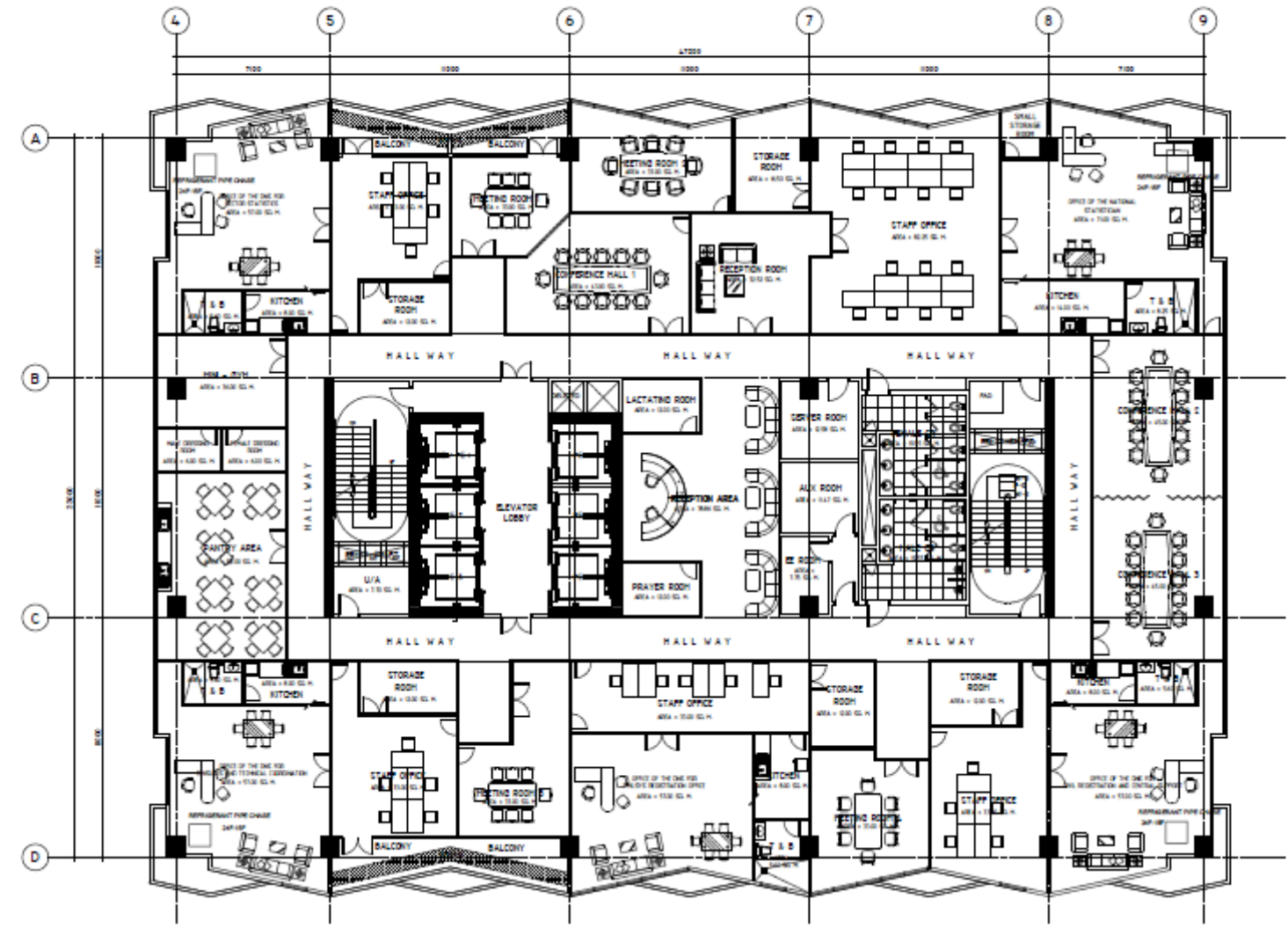
SCALE: 1:200 MTS

OFFICE OF THE NATIONAL STATISTICIAN (ONS) UNITS

TOTAL FLOOR AREA = 1,557.60 sq.m.

22nd FL00R

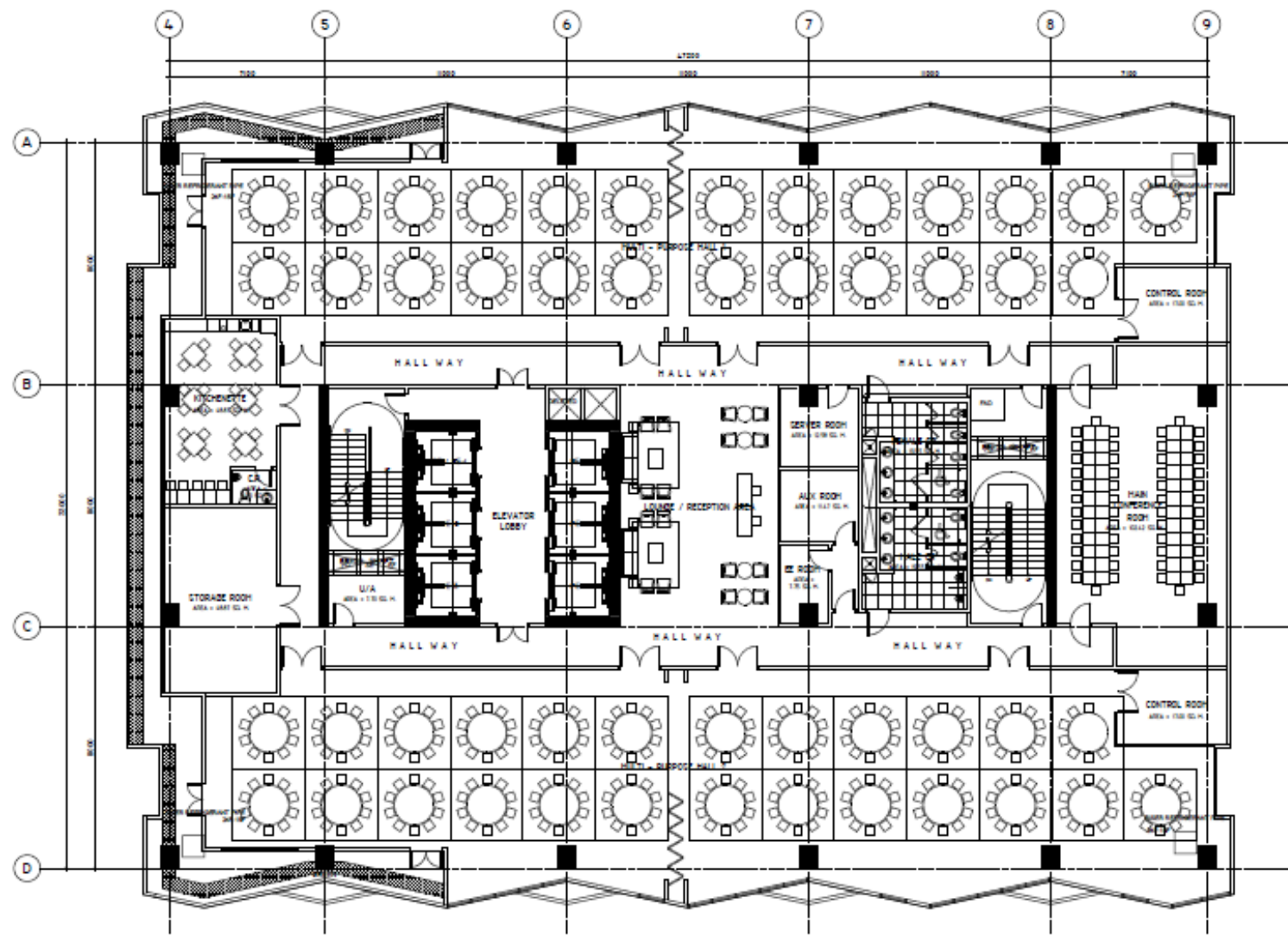
MECHANICAL PLANS



AIR-CONDITIONING AND VENTILATION SYSTEM  
SCALE: 1:200 MTS

OFFICE OF THE NATIONAL STATISTICIAN &  
OFFICE OF THE DEPUTY NATIONAL STATISTICIAN  
TOTAL FLOOR AREA = 1,557.60 sq.m.  
23rd FLOOR

MECHANICAL PLANS



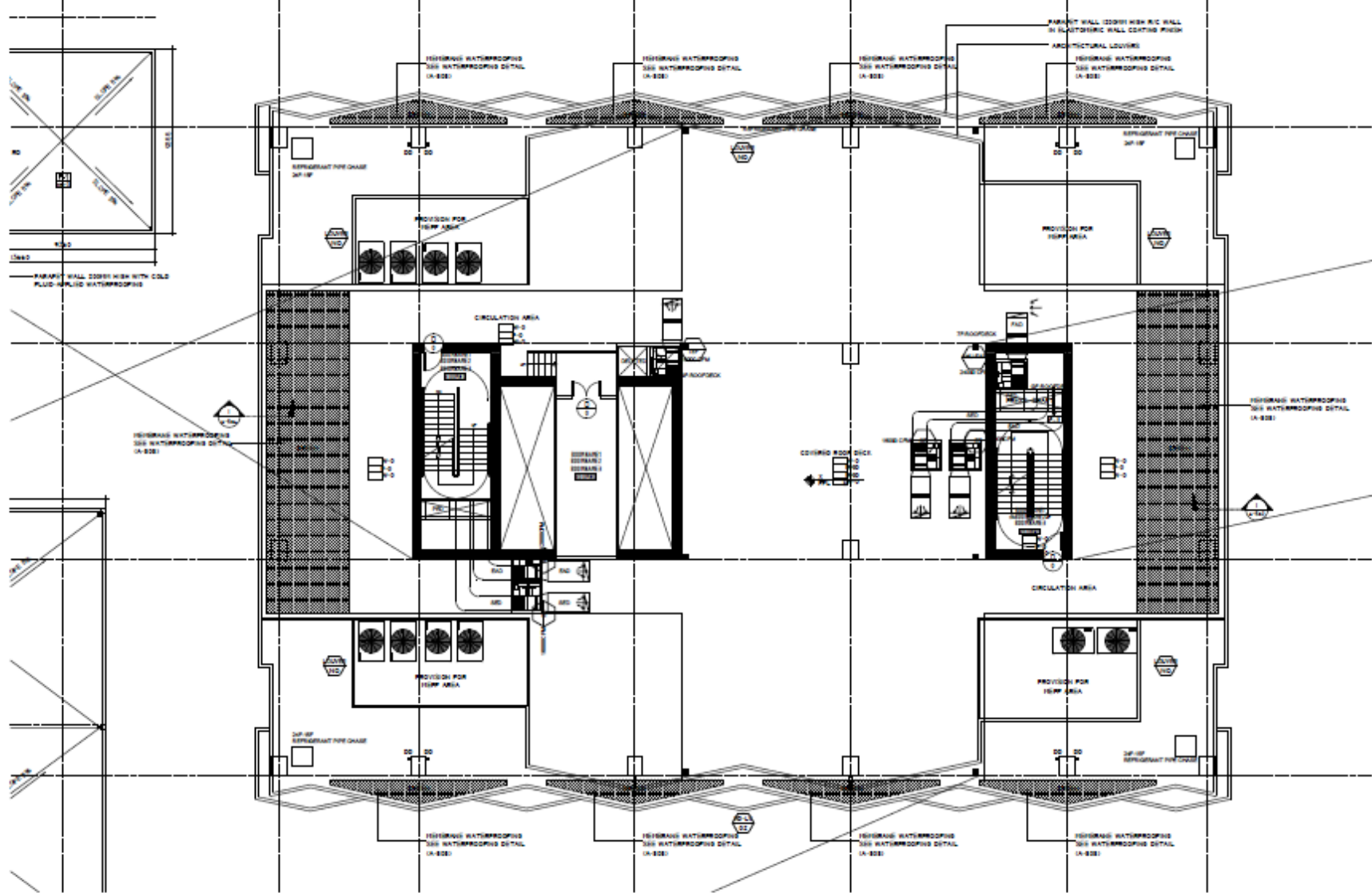
AIR-CONDITIONING AND VENTILATION SYSTEM  
SCALE: 1:200 MTS

MULTI-PURPOSE HALL &  
MAIN CONFERENCE ROOM

TOTAL FLOOR AREA = 1,557.60 sq.m.  
24th FLOOR



MECHANICAL PLANS

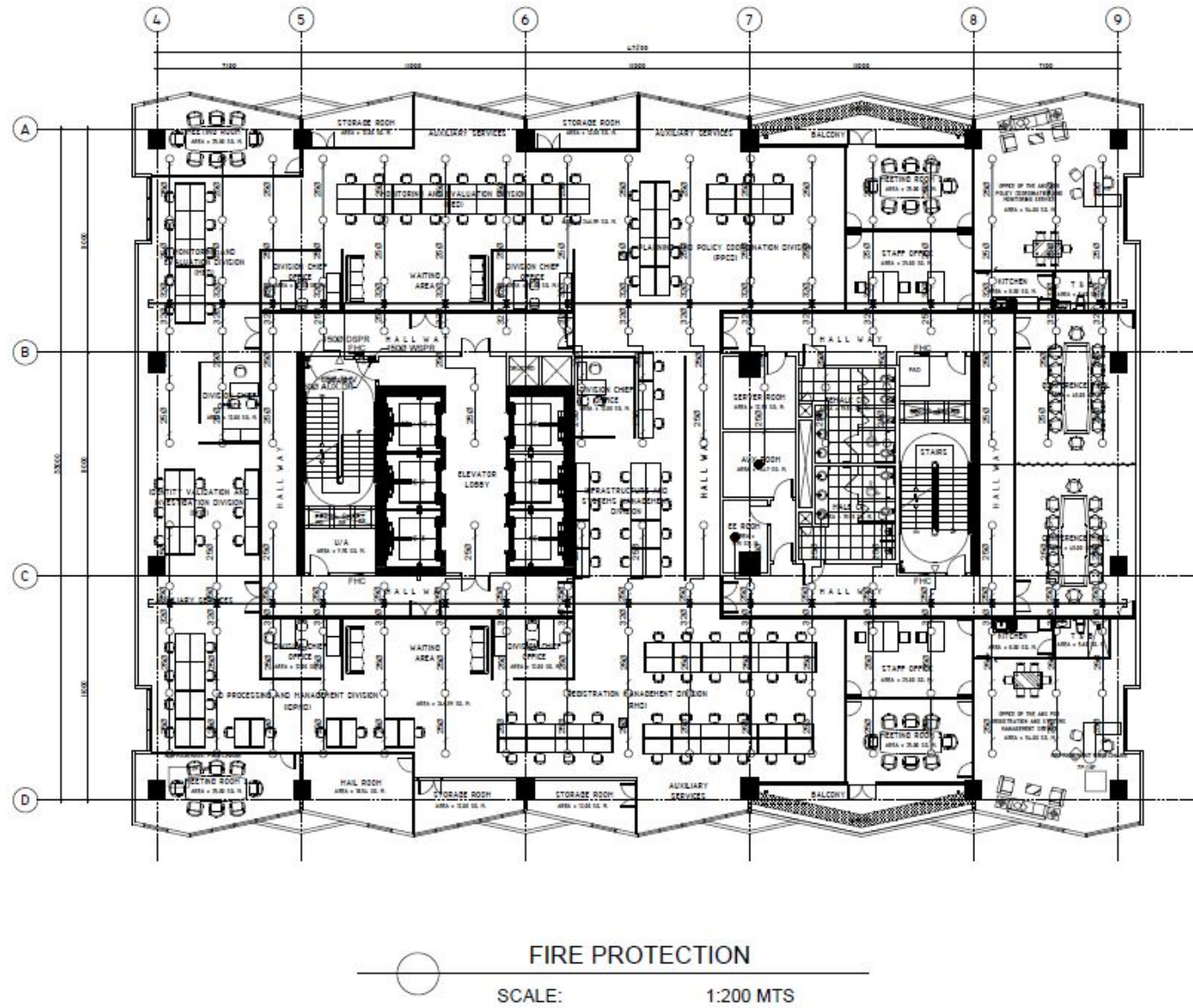


AIR-CONDITIONING AND VENTILATION SYSTEM  
SCALE: 1:200 MTS

TOTAL FLOOR AREA = 1,557.60 sq.m.

ROOF DECK

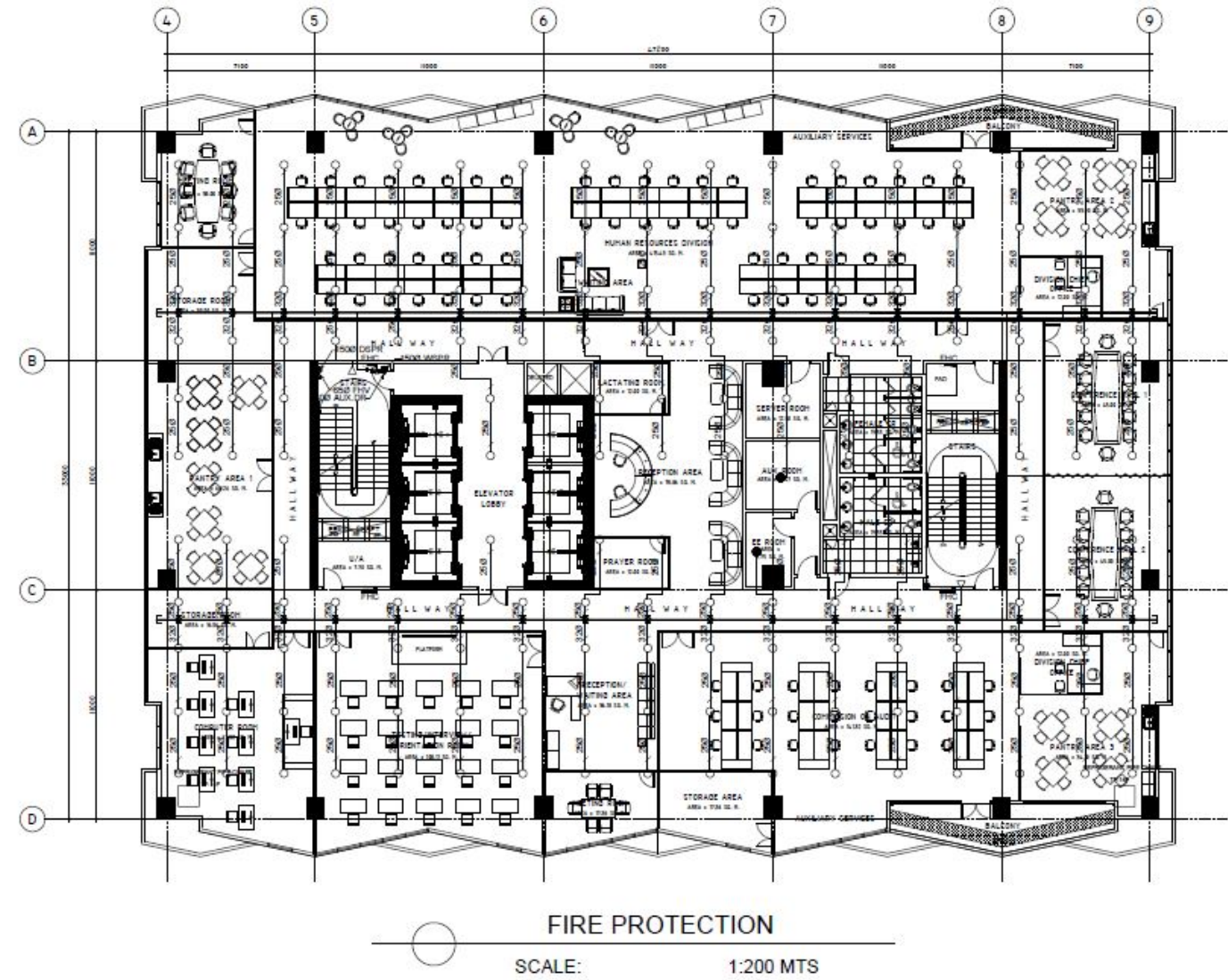
FIRE PROTECTION PLANS



TOTAL FLOOR AREA = 1,557.60 sq.m.

11th FLOOR

FIRE PROTECTION PLANS

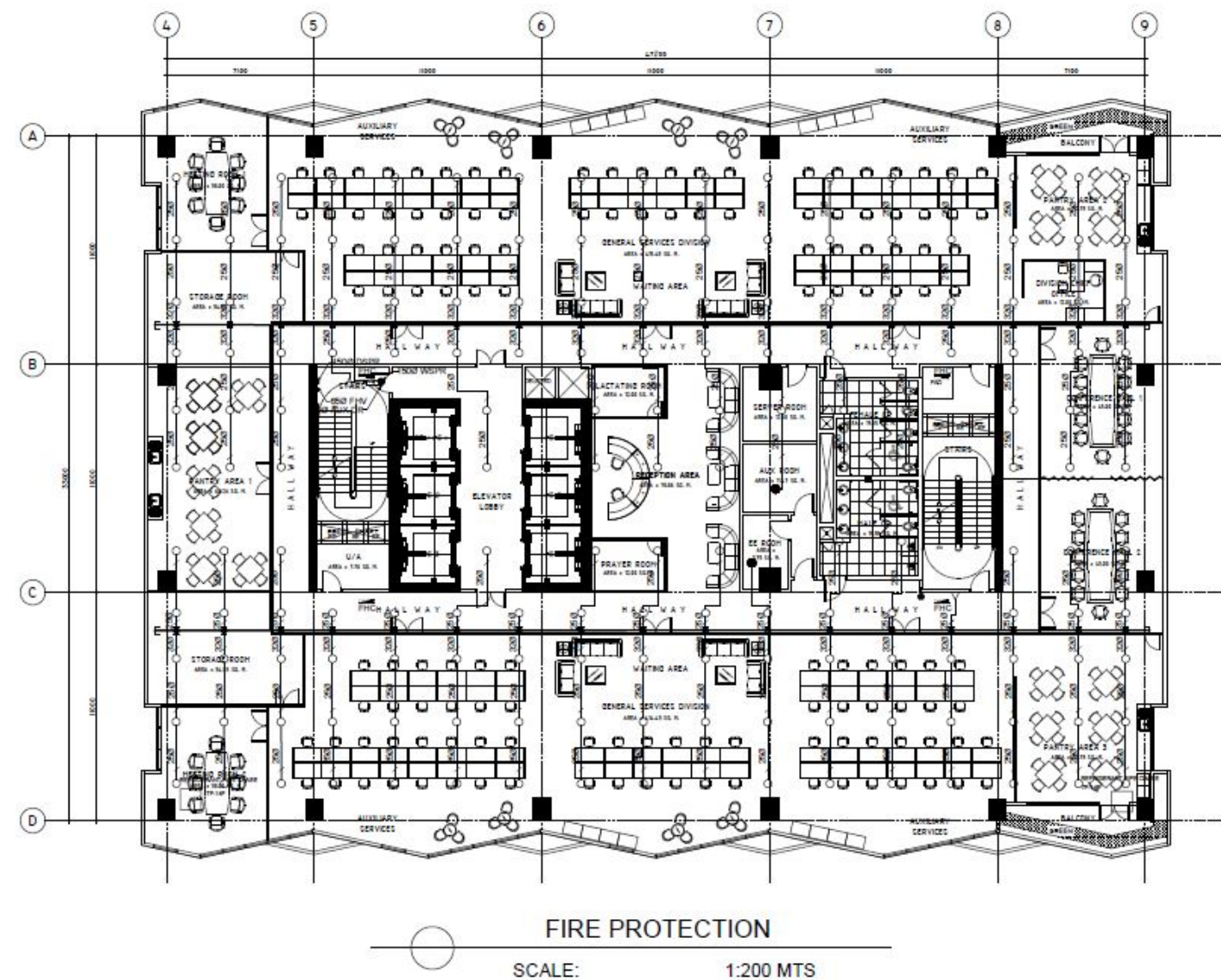


HUMAN RESOURCES DIVISION &  
COMMISSION ON AUDIT

TOTAL FLOOR AREA = 1,557.60 sq.m.  
12th FLOOR



FIRE PROTECTION PLANS

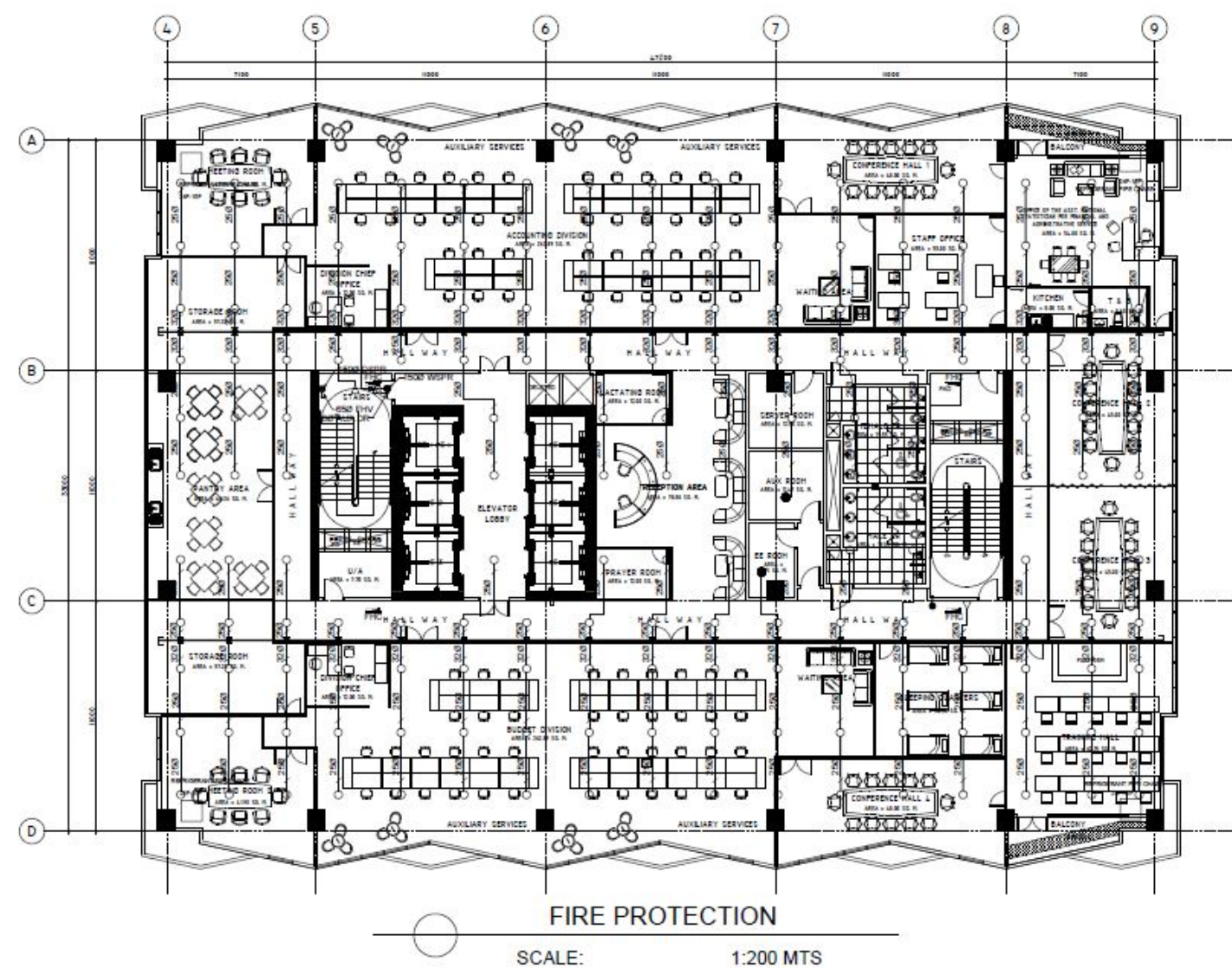


GENERAL SERVICES DIVISION

TOTAL FLOOR AREA = 1,557.60 sq.m.

14th FLOOR

FIRE PROTECTION PLANS

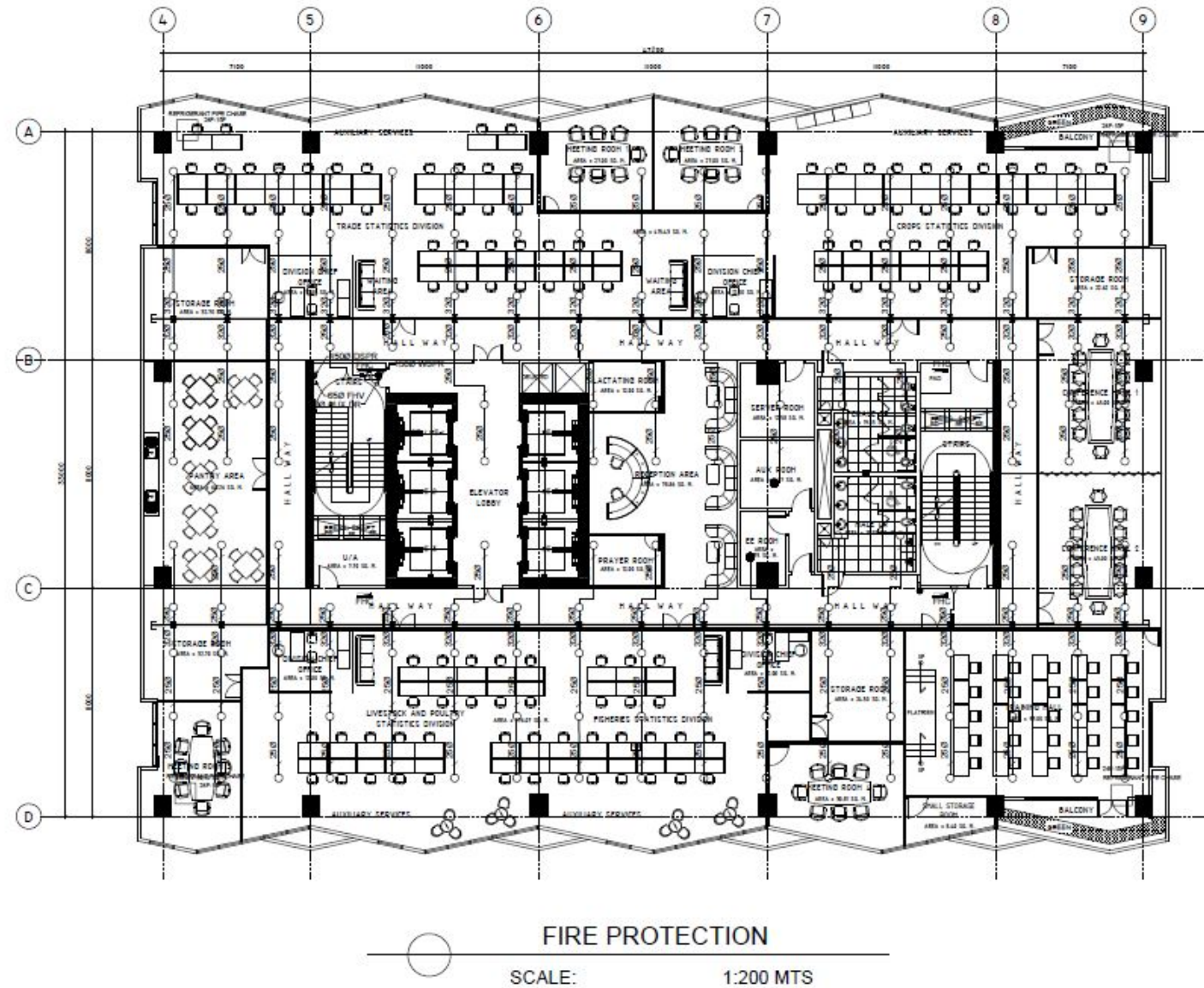


FINANCIAL AND ADMINISTRATIVE SERVICE

TOTAL FLOOR AREA = 1,557.60 sq.m.  
15th FLOOR



## FIRE PROTECTION PLANS

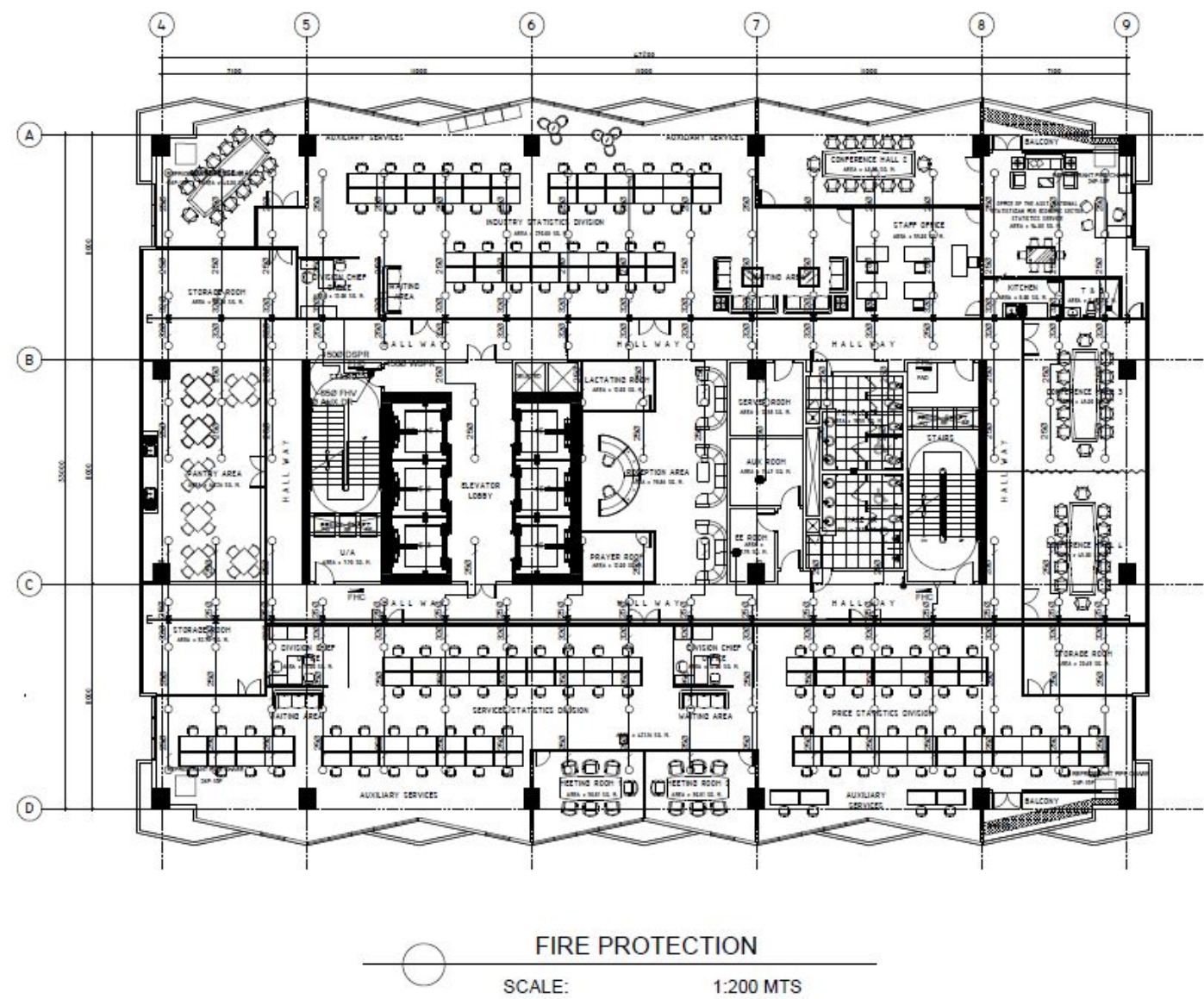


ECONOMIC SECTOR STATISTICS SERVICE

TOTAL FLOOR AREA = 1,557.60 sq.m.

16th FLOOR

FIRE PROTECTION PLANS



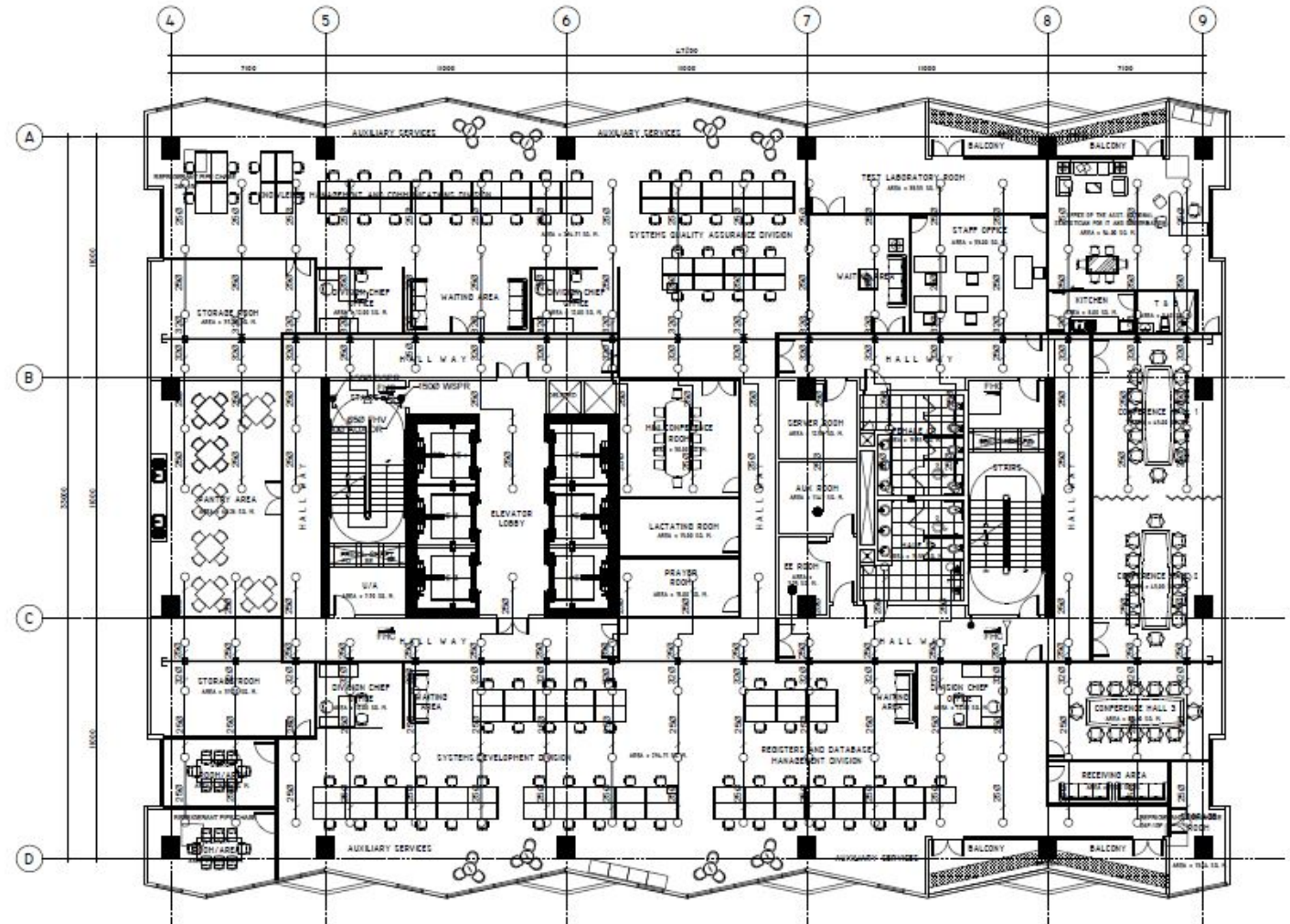
ECONOMIC SECTOR STATISTICS SERVICE

TOTAL FLOOR AREA = 1,557.60 sq.m.

17th FLOOR



FIRE PROTECTION PLANS

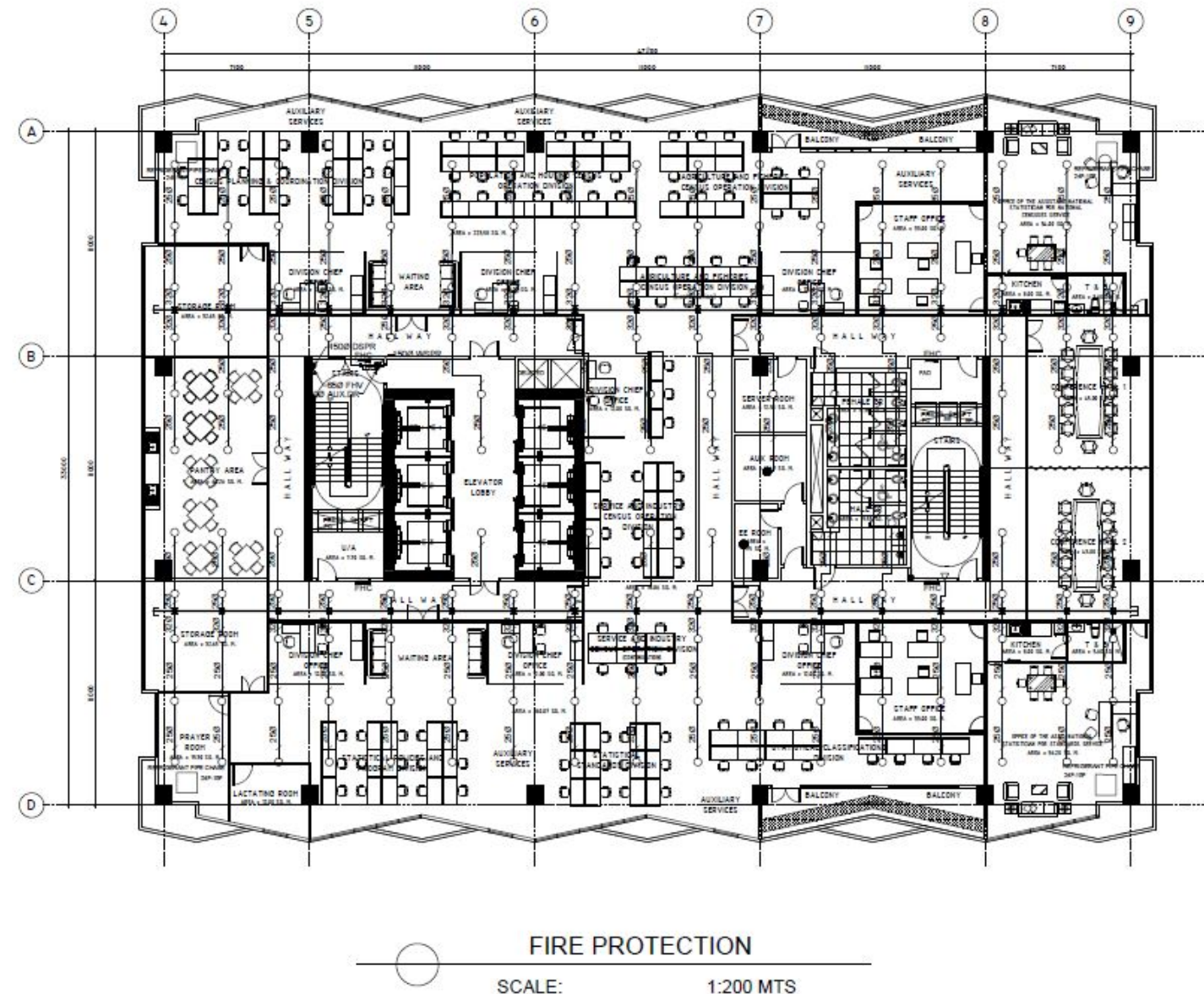


FIRE PROTECTION  
SCALE: 1:200 MTS

I.T. AND DISSEMINATION SERVICE

TOTAL FLOOR AREA = 1,557.60 sq.m.  
18th FLOOR

FIRE PROTECTION PLANS

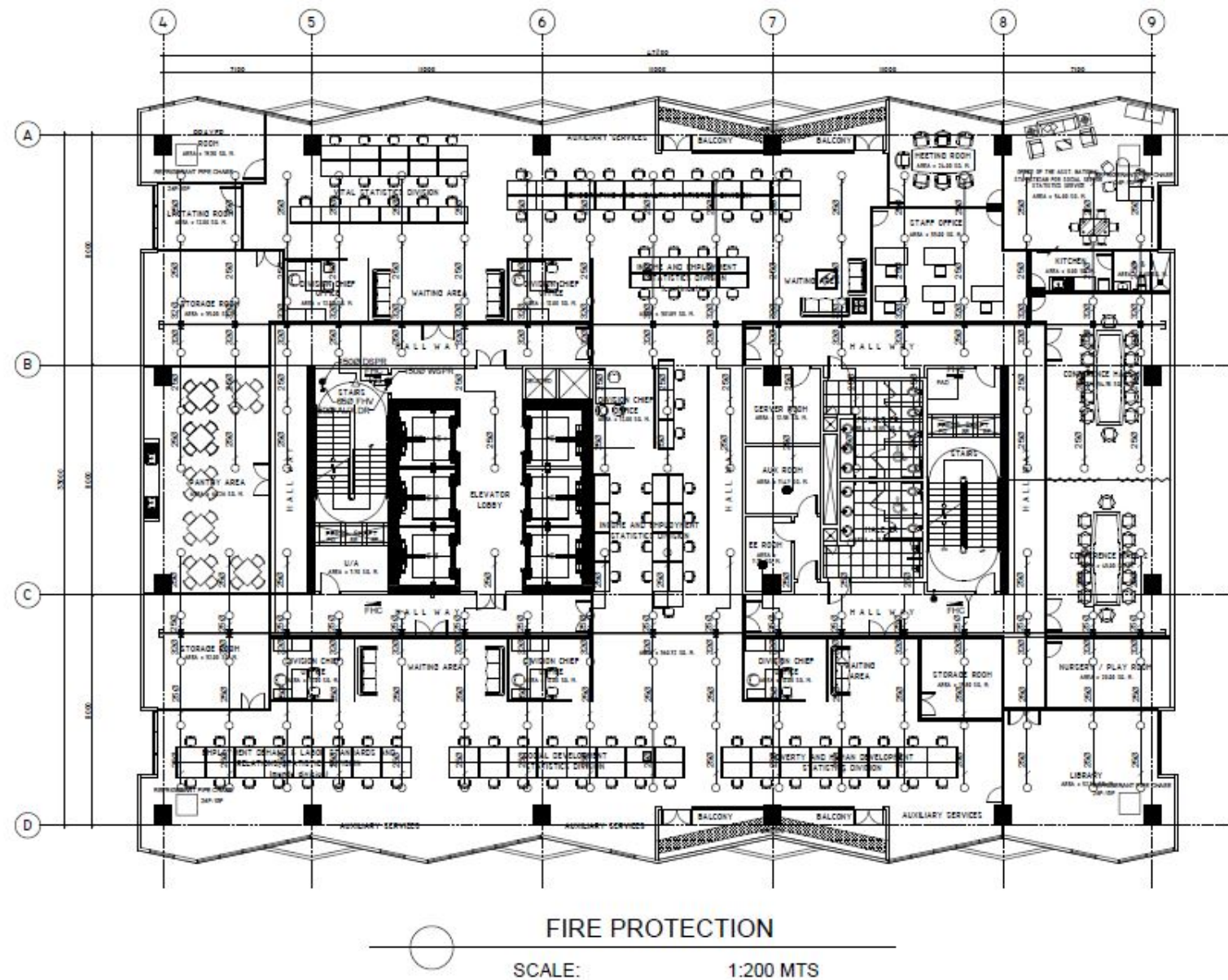


NATIONAL CENSUSES SERVICE &  
STANDARDS SERVICE

TOTAL FLOOR AREA = 1,557.60 sq.m.  
19th FLOOR



FIRE PROTECTION PLANS



SOCIAL SECTOR STATISTICS SERVICE

TOTAL FLOOR AREA = 1,557.60 sq.m.

20th FLOOR