

BIDS AND AWARDS COMMITTEE

Bid Bulletin No. 1

06 February 2023

PROCUREMENT OF SUPPLY, DELIVERY OF 85 INCHES DISPLAY MONITOR WITH HEIGHT ADJUSTABLE LARGE MOBILE DISPLAY TV CART 60''-100'' , 360 ALL-IN-ONE CONFERENCING CAMERA AND INSTALLATION AND CONFIGURATION OF DOOR ACCESS CONTROL SYSTEM FOR THE PHILSYS REGISTRY OFFICE

This Bid Bulletin No. 1 modifies the respective portions of the Bidding Documents issued on 19 January 2023.

The changes to the Bidding Documents, as indicated in the succeeding pages, are being issued in compliance with Section 22.5 of the Revised 2016 Implementing Rules and Regulations of RA 9184. Under this section, the procuring entity is directed to issue an amendment at least seven (7) days before the deadline for submission of the bid.

Except as expressly amended by this Bid Bulletin, all other terms and conditions of the Bidding Documents issued on 19 January 2023 shall remain unchanged and shall remain in full force and effect in accordance with their terms.

For guidance and information of all concerned.

SGD.

MINERVA ELOISA P. ESQUIVIAS

Chairperson, Bids and Awards Committee
Philippine Statistics Authority

PROCUREMENT OF SUPPLY, DELIVERY OF 85 INCHES DISPLAY MONITOR WITH HEIGHT ADJUSTABLE LARGE MOBILE DISPLAY TV CART 60''-100'' , 360 ALL-IN-ONE CONFERENCING CAMERA AND INSTALLATION AND CONFIGURATION OF DOOR ACCESS CONTROL SYSTEM FOR THE PHILSYS REGISTRY OFFICE

Bid Bulletin No. 1

(As of 06 February 2023)

BB#	Reference	Amendments/Revision
BB1-1	<p>Section VII. Technical Specifications</p> <p>Lot 3- Supply, Delivery, Installation, and Configuration of Door Access Control System</p> <p>6. Must support different unlock methods (Card/keypad/password/fingerprint/VM S)</p>	<p>From:</p> <p>6. Must support different unlock methods (Card/keypad/password/fingerprint/VM S)</p> <p>To:</p> <p>6. Must support keypad (PIN Code) and RFID Card Reader method to unlock</p>
BB1-2	<p>Section VII. Technical Specifications</p> <p>Lot 3- Supply, Delivery, Installation, and Configuration of Door Access Control System</p> <p>22. Must include civil restoration works for the affected area</p>	<p>From:</p> <p>22. Must include civil restoration works for the affected area</p> <p>To:</p> <p>22. Must include all relevant works needed to fully install/establish the door access system including mounting, wiring and cabling, installing and connecting the RFID card reader to the door mechanism, installing the power source unit, testing, and commissioning the door access system.</p>
BB1-3	<p>Section VII. Technical Specifications</p> <p>Lot 2-360 All-in-on Conferencing Camera for the PhilSys Registry Office (PRO)</p> <p>3. Must have eight (8) omnidirectional microphones (16bit/Single Track/ 16Khz</p>	<p>From:</p> <p>3. Must have eight (8) omnidirectional microphones (16bit/Single Track/ 16Khz)</p> <p>To:</p> <p>3. Must have eight (8) built-in omnidirectional microphones (16bit/Single Track/ 16Khz)</p>

BB1-4	Section III - Bid Data Sheet Similar contracts are the Supply, Delivery and installation of Various ICT equipment.	For All lots From: <i>Supply, Delivery and Installation of Various ICT equipment</i> To: <i>Supply, Delivery and Installation of Various ICT equipment (to include ICT parts and accessories, audio/video equipment, Printer)</i>
--------------	---	--

PROCUREMENT OF SUPPLY, DELIVERY OF 85 INCHES DISPLAY MONITOR WITH HEIGHT ADJUSTABLE LARGE MOBILE DISPLAY TV CART 60"-100", 360 ALL-IN-ONE CONFERENCING CAMERA AND INSTALLATION AND CONFIGURATION OF DOOR ACCESS CONTROL SYSTEM FOR THE PHILSYS REGISTRY OFFICE

Questions and Answers

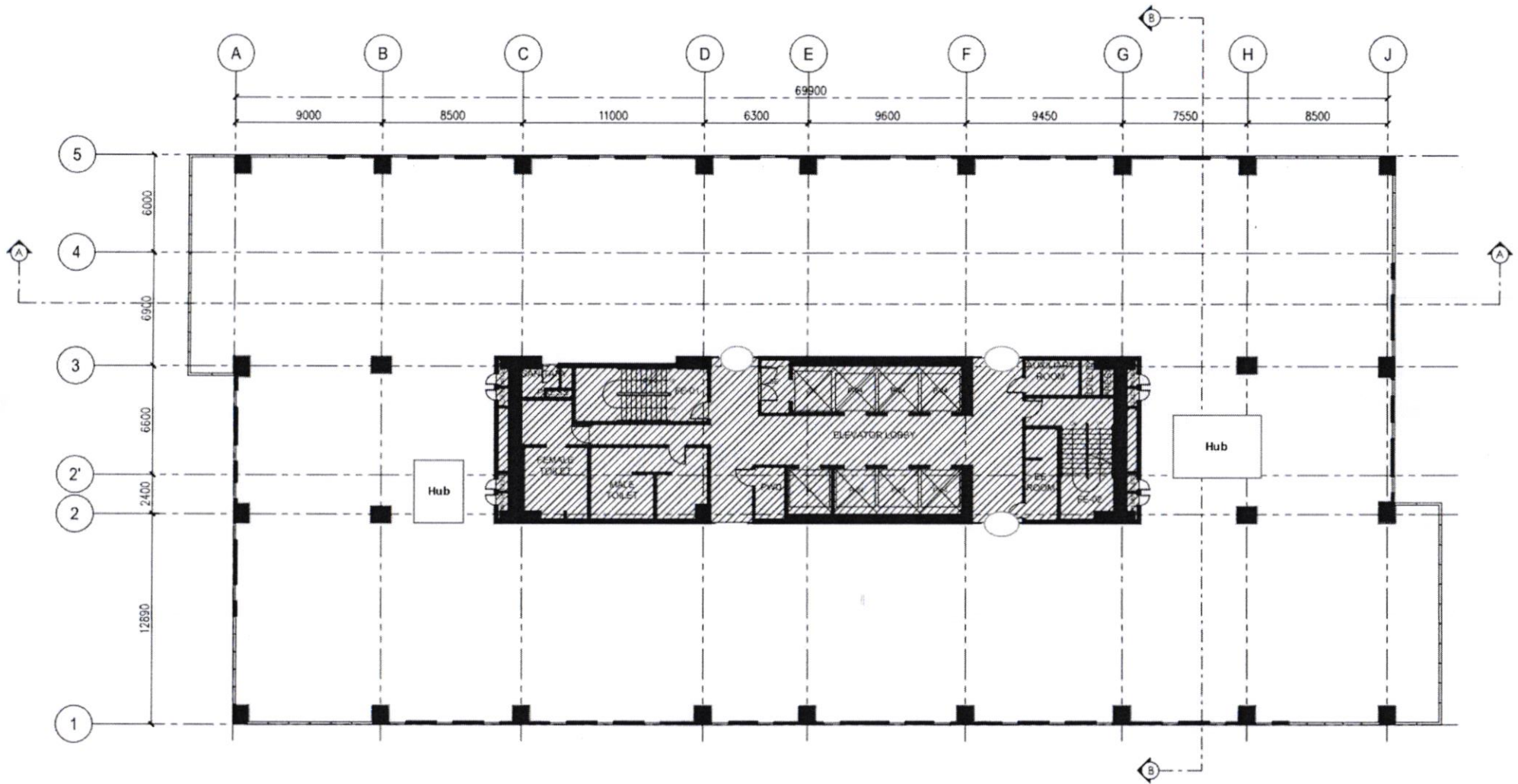
(As of 06 February 2023)

Reference	Query	Response/s
<p>Section VII - Technical Specifications</p> <p>Lot 1 - 85 inches Display Monitor with Height Adjustable Large Mobile Display TV Cart for 60"-100"</p> <p><i>On the requirement for "Must have Crystal Processor 4K for the Picture Engine"</i></p>	<p>1. Will PSA require a LED or LCD monitor?</p>	<p>1. For Lot 1, the PSA requires an LED monitor. The specification on <i>Crystal Processor 4K for the Picture Engine</i> is retained.</p>
<p>Section VII - Technical Specifications</p> <p>Height Adjustable Large Mobile Display TV Cart for 60"- 100"</p>	<p>1. Will PSA accept a TV stand, that is, customize or will PSA provide a specific brand for this requirement?</p> <p>2. Additional question, Will PSA requires a powder coated or spray paint for the TV stand. What color do you prefer for the TV cart?</p>	<p>1. Yes, as long as it meets the technical specifications in the bid documents.</p> <p>2. Powder coated. The coating must be black, and as long as it meets the technical specifications outlined in the bid documents, there are no additional specific requirements for the coating.</p>
<p>Section VII - Technical Specifications</p> <p>Lot 2 - 360 All-in-one Conferencing Camera for the PhilSys Registry Office (PRO)</p>	<p>1. On the requirement for "Must have eight (8) omnidirectional microphones (16bit/ Single Track/ 16Khz)" Please confirm if this is built in? If yes, kindly specify this requirement.</p>	<p>1. Please check BB1-3</p>

	<p>2. Will PSA require an installation for said lot?</p>	<p>2. No. The suppliers participating in Lot 2 only need to provide the items and deliver the items.</p>
<p>Section VII - Technical Specifications</p> <p>Lot 3 - Supply, Delivery, Installation, and Configuration of Door Access Control System</p> <p>On the requirement for "Must have 5 Door access controller compatible to the existing DS-K2602-G Hikvision model"</p> <p>Please clarify the requirements for Access Control Features - Must include other features like support for multi-door interlocking function, anti-passback function (cross-controller anti-pass back, up to 64 devices), multiple authentication, first card, super card, and super password function,</p>	<p>1. Is there an existing power supply with a brand model, that is, DS-K2602-G? Do bidders need to replace the existing power supply?</p> <p>2. Please clarify the requirement for "Must be compatible with iVMS-4200 platform".</p> <p>3. Please clarify if the bidder/s is/are required to provide the controller?</p> <p>4. Please clarify the requirements for "Must have Two (2) door relay lock". "is this a quantity?"</p> <p>5. Please clarify the requirements for "Must have Two (2) dry sensors and Two (2) exit buttons". Is this a door sensor or motion sensor?</p> <p>6. If the requirements include the wrappings and wiring on the installation?</p> <p>7. On the requirements for "Must include 500 pieces of 13.56MHZ RFID Cards."</p>	<p>1. The existing power supply unit (PSU) for the DS-K2602-G door controller will not be replaced, but instead, the winning bidder will provide new PSUs for new controllers.</p> <p>2. The current setup utilizes Hikvision's iVMS-4200 software. To meet the requirement, the new installation must have the capability to oversee and manage additional door access systems.</p> <p>3. Yes, the bidder must provide five (5) door access controllers.</p> <p>4. Yes it is a quantity. The installation of five sets of dual glass doors requires each access door to be equipped with two (2) door relay locks.</p> <p>5. It is a door sensor, not a motion sensor.</p> <p>6. Please check BB1-2</p> <p>7. Yes. The card must be plain white and 13.56MHz.</p>

	<p>Do you prefer plain white?</p> <p>8. Please clarify “Must support different unlock methods (Card/keypad/password/fingerprint/VMS)”</p>	<p>8. See BB1-1. The door access systems being procured must have the ability to use both keypad (PIN code) and RFID reader authentication methods for unlocking the doors.</p>
Others:		
On the submission of bidding documents	If, in case, bidders intend to participate for Lots 1 to 3, will they be required to submit separate bidding documents for each lot?	Bidders intending to participate in Lots 1 to 3 are required to submit one (1) original and one (1) additional copy of the bidding documents, which should contain all the lots. The financial bid form for each lot, however, should be separated and enclosed in separate financial envelopes.
	For Lot 3, is DUPA required for the project?	It is not necessary to submit a Detailed Unit Price Analysis (DUPA) for this lot.
	For Lot 3, can we request a floor plan for reference?	Please refer to the attached floor plan document under the Associated Components of this procurement on PSA's procurement website and on PhilGEPS's website.

Ceiling Height = 2.70m



1
A - 1.200

11TH FLOOR PLAN

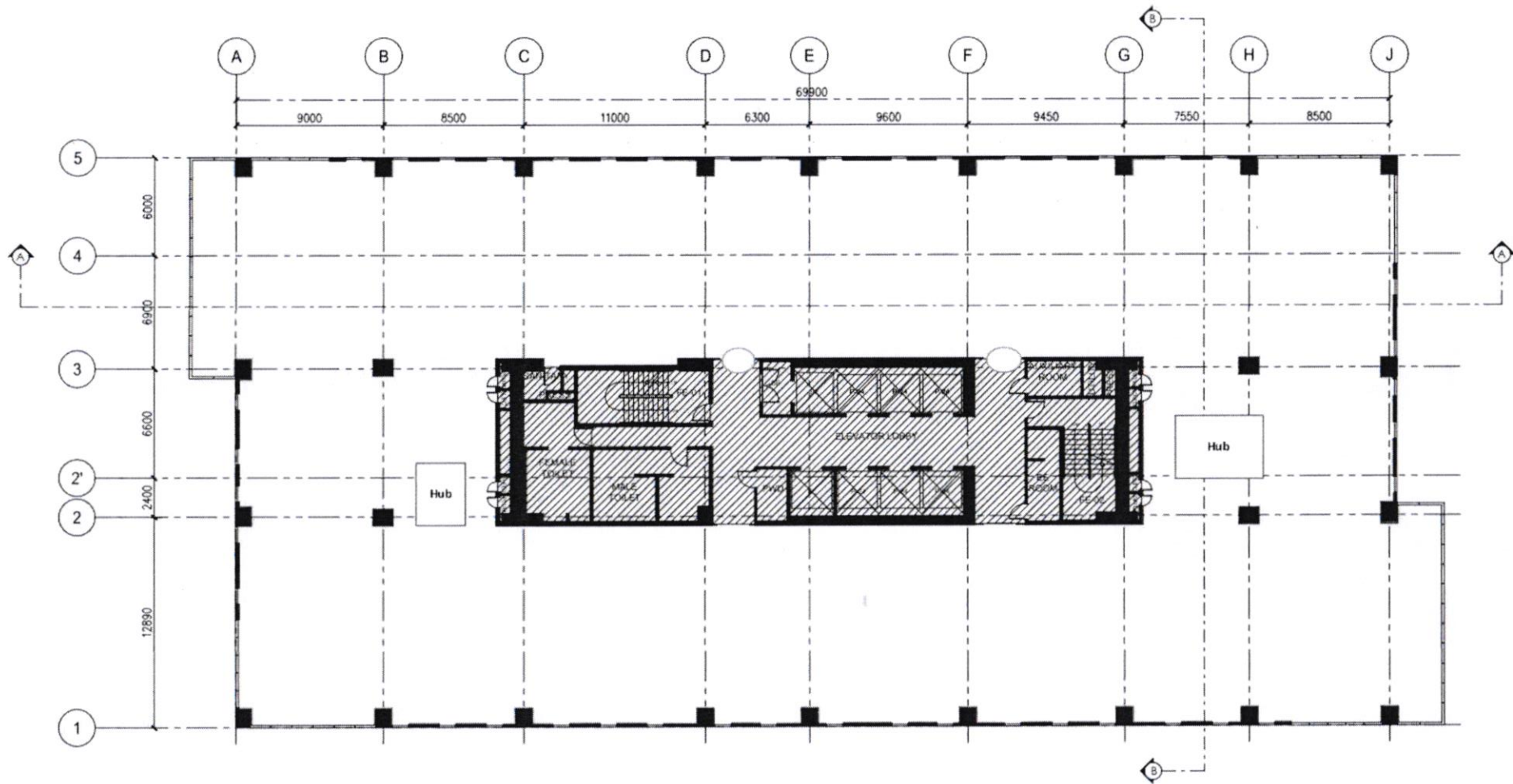
SCALE

1:100 M

Legend:

O : Dual Glass Door

Ceiling Height = 2.70m



Legend:

O : Dual Glass Door



1
A - 2.200

12TH FLOOR PLAN

SCALE

1:100 M