

**FLOOR FINISH LEGEND :**

NEW FINISHES	
F-1	BARE STRUCTURAL CONCRETE SLAB DEPRESSED 50mm TO RECEIVE TOPPING AND FINISH
F-2	600mm x 600mm CARPET TILES
F-3	600mm x 600mm x 8mm THK NON-SKID FLOOR TILE
F-4	600mm x 600mm x 8mm THK POLISHED FLOOR TILE
F-5	RUBBERIZED MAT FLOORING
F-6	SIMULATED WOOD TILES
F-7	600mm x 600mm x 10mm THK POLISHED GRANITE FLOOR TILE
EXISTING FINISHES	
EX-01	POLYURETHANE-BASED EPOXY FLOOR COATING
EX-02	EPOXY TANK LINING
EX-03	CEMENT-BASED NON-SKID WAFFLE TILE
EX-04	WET-INSTALLED 20mm THK FLAMED GRANITE SLAB (PROVIDE SEALER)
EX-05	TROWEL FINISH WITH PENETRATING SEALER AND HARDENER
EX-06	600mm x 600mm x 8mm THK NON-SKID FLOOR TILE
EX-07	600mm x 600mm x 10mm THK POLISHED GRANITE FLOOR TILE
EX-08	600mm x 600mm x 8mm THK POLISHED FLOOR TILE

**CEILING FINISHES LEGEND :**

NEW FINISHES	
C-1	LOW SHEEN ACRYLIC LATEX PAINT ON SMOOTH RUBBED FINISHED EXPOSED UNDERSIDE OF SLAB/BEAM
C-2	LOW SHEEN ACRYLIC LATEX PAINT ON 12mm THK MOISTURE RESISTANT GYPSUM BOARD ON METAL CEILING JOIST
C-3	600x600 REGULAR ACOUSTIC TILES ON POWDER COATED ALUMINUM T RUNNERS
C-4	POWDER COATED ALUMINUM PANELS ON CONCEALED ALUMINUM RUNNERS
C-5	12mm THK GYPSUM BOARD IN HPL METAL FIN. AND 6mm THK GRAPHICOTE GLASS PANELS ON POWDER COATED ALUMINUM FRAMING WITH 6mm THK ACRYLIC DIFFUSERS
C-6	LOW SHEEN ACRYLIC LATEX PAINT ON 12mm THK GYPSUM BOARD ON METAL CEILING JOIST
C-7	ALUMINUM COMPOSITE CEILING PANEL
C-8	LOW SHEEN ACRYLIC LATEX PAINT ON 12mm THK GYPSUM BOARD HEXAGONAL ACCENT DROP CEILING 1.20m DIA x 150mm THK ON METAL HANGERS
EXISTING FINISHES	
EX-C-1	LOW SHEEN ACRYLIC LATEX PAINT ON SMOOTH RUBBED FINISHED EXPOSED UNDERSIDE OF SLAB/BEAM
EX-C-2	LOW SHEEN ACRYLIC LATEX PAINT ON 12mm THK MOISTURE RESISTANT GYPSUM BOARD ON METAL CEILING JOIST
EX-C-3	LOW SHEEN ACRYLIC LATEX PAINT ON 12mm THK GYPSUM BOARD ON METAL CEILING JOIST

**WALL FINISH LEGEND :**

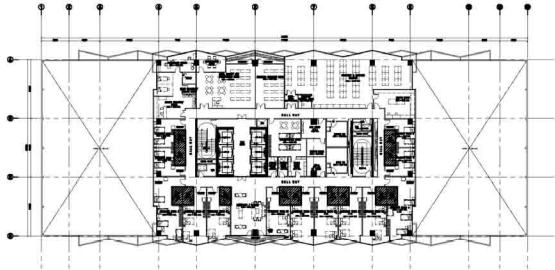
EXISTING FINISHES	
EX-W-1	SEMI-GLOSS LATEX PAINT FINISH
EX-W-2	300x600x25mm THK POLISHED HOMOGENOUS WALL TILE
EX-W-3	EPOXY LINING
EX-W-4	LIQUID-APPLIED ELASTOMERIC WALL COATING
EX-W-5	PAINTED FINISH WITH TRAFFIC STRIPE PATTERN
NEW FINISHES	
WF-1	SEMI-GLOSS LATEX PAINT FINISH
WF-2	300x600x25mm THK POLISHED HOMOGENOUS WALL TILE
WF-3	8MM COAT WALL COATING FINISH
WF-4	ACOUSTIC PADDING
WF-5	4mm THK COLOR COATED GLASS
WF-6	WOOD VENEER (VERIFY DESIGN ON DETAILS)

**PARTITION TYPE LEGEND :**

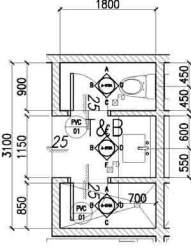
EXISTING PARTITION	
EXP-1	125mm THK CAST-IN-PLACE CONCRETE EXTERIOR WALL
EXP-2	REINFORCED STRUCTURAL CONCRETE WALL
EXP-3	150mm THK CHB 2HR FIRE RATED (FLOOR TO BOTTOM SLAB/BEAM) PLASTERED AND FINISH AS PER WALL FINISHED SCHEDULE
EXP-4	150mm THK CHB (FLOOR TO BOTTOM SLAB/BEAM) PLASTERED AND FINISH AS PER WALL FINISHED SCHEDULE
NEW PARTITION	
P-1	150mm THK CHB (FLOOR TO BOTTOM SLAB/BEAM) PLASTERED AND FINISH AS PER WALL FINISHED SCHEDULE
P-2	100mm THK FULL HT DRY WALL PARTITION w/ 2HR FIRE RATING, GYPSUM BOARD ON METAL FURRING PLASTERED AND FINISHED AS PER WALL FINISH SCHED.
P-3	100mm THK 1.80m HT DRY WALL PARTITION w/ 2HR FIRE RATING, GYPSUM BOARD ON METAL FURRING PLASTERED AND FINISHED AS PER WALL FINISH SCHED.
P-4	100mm THK DRY WALL CLADDING IN 200MM ABOVE FINISH FLOOR LINE (SEE INTERIOR DETAILS)
P-5	12mm THK CLEAR SEMI-FRAMELESS FULL HT THERMO GLASS WALL PARTITION w/ MID-HT FROSTED STICKER BAND

**NOTE:**  
PURSUANT TO SECTION 4 OF ANNEX "A" OF THE REVISED IMPLEMENTING RULES AND REGULATIONS OF R.A. 9164, APPROVAL BY THE AUTHORIZED DPWH OFFICIALS OF DETAILED ENGINEERING SURVEYS AND DESIGN UNDERTAKEN BY CONSULTANTS NEITHER TRANSFERS THE RESPONSIBILITY OF THE LATTER FOR THE TECHNICAL INTEGRITY OF THE SURVEYS AND DESIGN NOR TRANSFER ANY PART OF THAT RESPONSIBILITY TO THE APPROVING OFFICIALS.  
THE DESIGN CONSULTANT SHALL BE HELD RESPONSIBLE FOR THE FAILURE OF THE FACILITY/IES / STRUCTURES DUE TO FAULTY DESIGN EXCEPT FOR THE CHANGES MADE WITHOUT THE CONFORMITY OF THE CONSULTANTS.

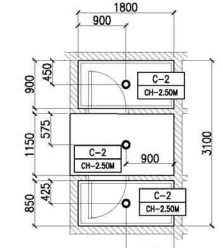
DRAWINGS AND SPECIFICATIONS DULY SIGNED, STAMPED OR SEALED, AS INSTRUMENTS OF SERVICE ARE PROPERTY AND DOCUMENTS OF THE ARCHITECT, WHETHER THE OBJECT FOR WHICH THEY ARE MADE IS EXECUTED OR NOT. IT SHALL BE UNLAWFUL FOR ANY PERSON, WITHOUT THE WRITTEN CONSENT OF THE ARCHITECT OR AUTHOR OF SAID DOCUMENTS, TO DUPLICATE OR TO MAKE COPIES OF SAID DOCUMENTS FOR USE IN THE REPEITION OF AND FOR OTHER PROJECTS OR BUILDINGS, WHETHER EXECUTED PARTLY OR IN WHOLE.



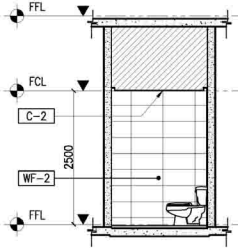
1 BF / EXECUTIVE ROOM TOILET DETAIL KEY PLAN  
A-919A SCALE: 1:500M



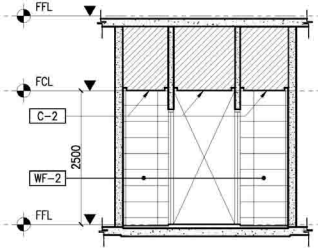
2 EXECUTIVE ROOM TOILET DETAIL BLOW-UP PLAN  
A-919A SCALE: 1:50M



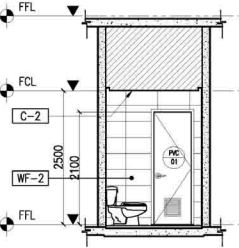
3 EXECUTIVE ROOM TOILET DETAIL REFLECTED CEILING PLAN  
A-919A SCALE: 1:50M



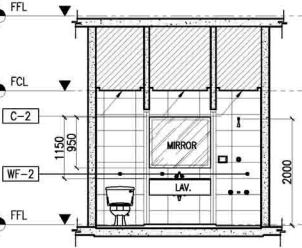
4 EXECUTIVE ROOM TOILET DETAIL ELEVATION THRU - A  
A-919A SCALE: 1:50M



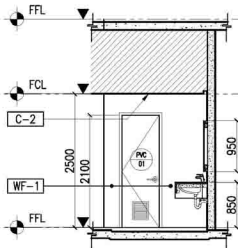
5 EXECUTIVE ROOM TOILET DETAIL ELEVATION THRU - B  
A-919A SCALE: 1:50M



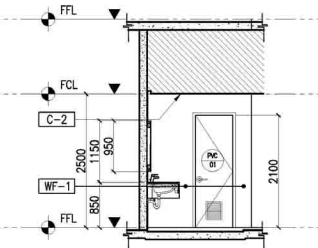
6 EXECUTIVE ROOM TOILET DETAIL ELEVATION THRU - C  
A-919A SCALE: 1:50M



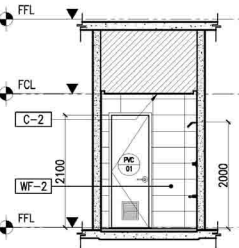
7 EXECUTIVE ROOM TOILET DETAIL ELEVATION THRU - D  
A-919A SCALE: 1:50M



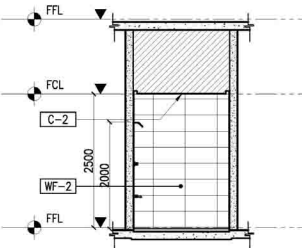
8 EXECUTIVE ROOM TOILET DETAIL ELEVATION THRU - E  
A-919A SCALE: 1:50M



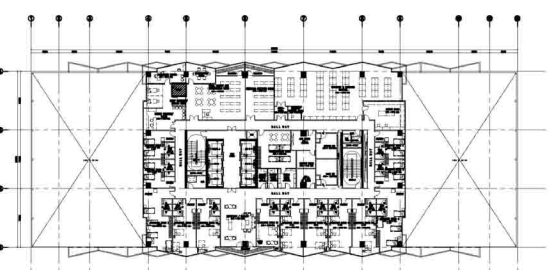
9 EXECUTIVE ROOM TOILET DETAIL ELEVATION THRU - F  
A-919A SCALE: 1:50M



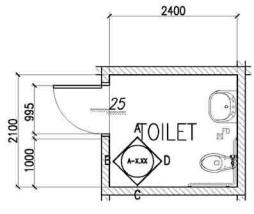
10 EXECUTIVE ROOM TOILET DETAIL ELEVATION THRU - G  
A-919A SCALE: 1:50M



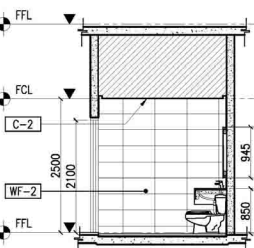
11 EXECUTIVE ROOM TOILET DETAIL ELEVATION THRU - H  
A-919A SCALE: 1:50M



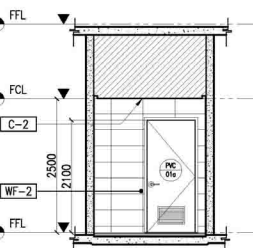
12 BF / HEALTH SERVICES TOILET DETAIL KEY PLAN  
A-919A SCALE: 1:500M



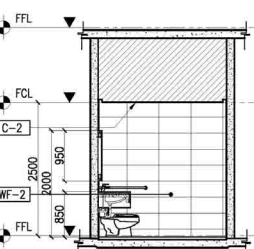
13 HEALTH SERVICES TOILET DETAIL BLOW-UP PLAN  
A-919A SCALE: 1:50M



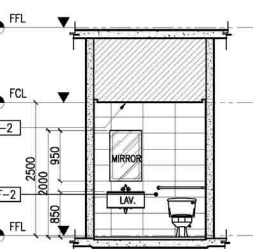
15 HEALTH SERVICES TOILET DETAIL ELEVATION THRU - A  
A-919A SCALE: 1:50M



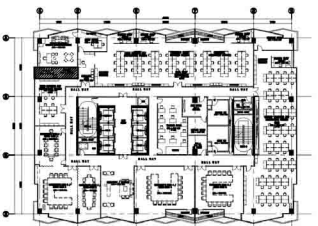
16 HEALTH SERVICES TOILET DETAIL ELEVATION THRU - B  
A-919A SCALE: 1:50M



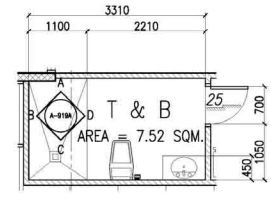
17 HEALTH SERVICES TOILET DETAIL ELEVATION THRU - C  
A-919A SCALE: 1:50M



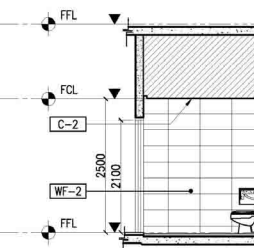
18 HEALTH SERVICES TOILET DETAIL ELEVATION THRU - D  
A-919A SCALE: 1:50M



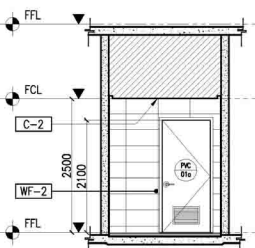
19 TYPICAL OFFICE TOILET DETAIL KEY PLAN  
A-919A SCALE: 1:500M



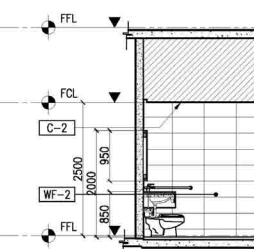
20 TYPICAL OFFICE TOILET DETAIL BLOW-UP PLAN  
A-919A SCALE: 1:50M



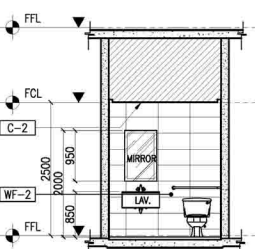
22 TYPICAL OFFICE TOILET DETAIL ELEVATION THRU - A  
A-919A SCALE: 1:50M



23 TYPICAL OFFICE TOILET DETAIL ELEVATION THRU - B  
A-919A SCALE: 1:50M



24 TYPICAL OFFICE TOILET DETAIL ELEVATION THRU - C  
A-919A SCALE: 1:50M



25 TYPICAL OFFICE TOILET DETAIL ELEVATION THRU - D  
A-919A SCALE: 1:50M

**FLOOR FINISH LEGEND :**

- NEW FINISHES**
- F-1 BARE STRUCTURAL CONCRETE SLAB DEPRESSED 50MM TO RECEIVE TOPPING AND FINISH
  - F-2 600mm x 600mm CARPET TILES
  - F-3 600mm x 600mm x 8mm THK NON-SKID FLOOR TILE
  - F-4 600mm x 600mm x 8mm THK POLISHED FLOOR TILE
  - F-5 RUBBERIZED MAT FLOORING
  - F-6 SIMULATED WOOD TILES
  - F-7 600mm x 600mm x 10mm THK POLISHED GRANITE FLOOR TILE

- EXISTING FINISHES**
- EX-01 POLYURETHANE-BASED EPOXY FLOOR COATING
  - EX-02 EPOXY TANK LINING
  - EX-03 CEMENT-BASED NON-SKID WAFFLE TILE
  - EX-04 WET-INSTALLED 20mm THK FLAMED GRANITE SLAB (PROVIDE SEALER)
  - EX-05 TROWEL FINISH WITH PENETRATING SEALER AND HARDENER
  - EX-06 600mm x 600mm x 8mm THK NON-SKID FLOOR TILE
  - EX-07 600mm x 600mm x 10mm THK POLISHED GRANITE FLOOR TILE
  - EX-08 600mm x 600mm x 8mm THK POLISHED FLOOR TILE

**CEILING FINISHES LEGEND :**

- NEW FINISHES**
- C-1 LOW SHEEN ACRYLIC LATEX PAINT ON SMOOTH RUBBED FINISHED EXPOSED UNDERSIDE OF SLAB/BEAM
  - C-2 LOW SHEEN ACRYLIC LATEX PAINT ON 12mm THK MOISTURE RESISTANT GYPSUM BOARD ON METAL CEILING JOIST
  - C-3 600x600 REGULAR ACOUSTIC TILES ON POWDER COATED ALUMINUM T RUNNERS
  - C-4 POWDER COATED ALUMINUM PANELS ON CONCEALED ALUMINUM RUNNERS
  - C-5 12mm THK GYPSUM BOARD IN HPL METAL FIN. AND 6mm THK GRAPHICOTE GLASS PANELS ON POWDER COATED ALUMINUM FRAMING WITH 6mm THK ACRYLIC DIFFUSERS
  - C-6 LOW SHEEN ACRYLIC LATEX PAINT ON 12mm THK GYPSUM BOARD ON METAL CEILING JOIST
  - C-7 ALUMINUM COMPOSITE CEILING PANEL
  - C-8 LOW SHEEN ACRYLIC LATEX PAINT ON 12mm THK GYPSUM BOARD HEXAGONAL ACCENT DROP CEILING 1.2m DIA x 150mm THK ON METAL HANGERS

- EXISTING FINISHES**
- EX-C-1 LOW SHEEN ACRYLIC LATEX PAINT ON SMOOTH RUBBED FINISHED EXPOSED UNDERSIDE OF SLAB/BEAM
  - EX-C-2 LOW SHEEN ACRYLIC LATEX PAINT ON 12mm THK MOISTURE RESISTANT GYPSUM BOARD ON METAL CEILING JOIST
  - EX-C-3 LOW SHEEN ACRYLIC LATEX PAINT ON 12mm THK GYPSUM BOARD ON METAL CEILING JOIST

**WALL FINISH LEGEND :**

- EXISTING FINISHES**
- EX-W-1 SEMI-GLOSS LATEX PAINT FINISH
  - EX-W-2 300x600x25mm THK POLISHED HOMOGENOUS WALL TILE
  - EX-W-3 EPOXY LINING
  - EX-W-4 LIQUID-APPLIED ELASTOMERIC WALL COATING
  - EX-W-5 PAINTED FINISH WITH TRAFFIC STRIPE PATTERN

- NEW FINISHES**
- WF-1 SEMI-GLOSS LATEX PAINT FINISH
  - WF-2 300x600x25mm THK POLISHED HOMOGENOUS WALL TILE
  - WF-3 SKIM COAT WALL COATING FINISH
  - WF-4 ACOUSTIC PADDING
  - WF-5 4mm THK COLOR COATED GLASS
  - WF-6 WOOD VENEER (VERIFY DESIGN ON DETAILS)

**PARTITION TYPE LEGEND :**

**EXISTING PARTITION**

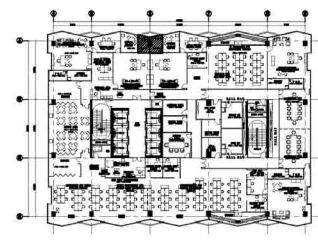
- EXP-1 125mm THK CAST-IN-PLACE CONCRETE EXTERIOR WALL
- EXP-2 REINFORCED STRUCTURAL CONCRETE WALL
- EXP-3 150mm THK CHB 2HR FIRE RATED (FLOOR TO BOTTOM SLAB/BEAM) PLASTERED AND FINISH AS PER WALL FINISH SCHEDULE
- EXP-4 150mm THK CHB (FLOOR TO BOTTOM SLAB/BEAM) PLASTERED AND FINISH AS PER WALL FINISH SCHEDULE

**NEW PARTITION**

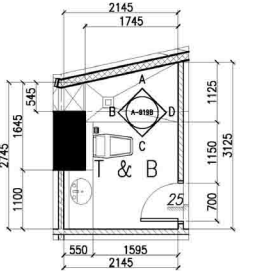
- P-1 150mm THK CHB (FLOOR TO BOTTOM SLAB/BEAM) PLASTERED AND FINISH AS PER WALL FINISH SCHEDULE
- P-2 100mm THK FULL HT DRY WALL PARTITION w/ 2HR FIRE RATING, GYPSUM BOARD ON METAL FURRING PLASTERED AND FINISHED AS PER WALL FINISH SCHED.
- P-3 100mm THK 1.8m HT DRY WALL PARTITION w/ 2HR FIRE RATING, GYPSUM BOARD ON METAL FURRING PLASTERED AND FINISHED AS PER WALL FINISH SCHED.
- P-4 100mm THK DRY WALL CLADDING IN 200MM ABOVE FINISH FLOOR LINE (SEE INTERIOR DETAILS)
- P-5 12mm THK CLEAR SEMI-FRAMELESS FULL HT TEMPERED GLASS WALL PARTITION w/ MID-HT FROSTED STICKER BAND

**NOTE:**  
PURSUANT TO SECTION 4 OF ANNEX "A" OF THE REVISED IMPLEMENTING RULES AND REGULATION OF R.A. 9164, APPROVAL BY THE AUTHORIZED DPWH OFFICIALS OF DETAILED ENGINEERING SURVEYS AND DESIGN UNDERTAKEN BY CONSULTANTS NEITHER TRANSFERS THE RESPONSIBILITY OF THE LATTER FOR THE TECHNICAL INTEGRITY OF THE SURVEYS AND DESIGN NOR TRANSFER ANY PART OF THAT RESPONSIBILITY TO THE APPROVING OFFICIALS.  
THE DESIGN CONSULTANT SHALL BE HELD RESPONSIBLE FOR THE FAILURE OF THE FACILITY/IES / STRUCTURES DUE TO FAULTY DESIGN EXCEPT FOR THE CHANGES MADE WITHOUT THE CONFORMITY OF THE CONSULTANTS.

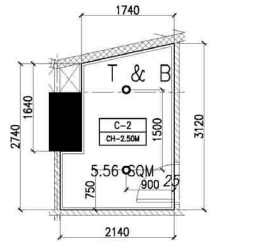
DRAWINGS AND SPECIFICATIONS DULY SIGNED, STAMPED OR SEALED, AS INSTRUMENTS OF SERVICE ARE PROPERTY AND DOCUMENTS OF THE ARCHITECT, WHETHER THE OBJECT FOR WHICH THEY ARE MADE IS COMPLETED OR NOT. IT SHALL BE UNLAWFUL FOR ANY PERSON, WITHOUT THE WRITTEN CONSENT OF THE ARCHITECT OR AUTHOR OF SAID DOCUMENTS, TO DUPLICATE OR TO MAKE COPIES OF SAID DOCUMENTS FOR USE IN THE REPEITION OF AND FOR OTHER PROJECTS OR BUILDINGS, WHETHER EXECUTED PARTLY OR IN WHOLE.



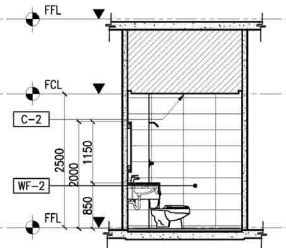
1 11F / OFFICE OF THE ANS TOILET DETAIL  
**KEY PLAN**  
SCALE: 1:500M



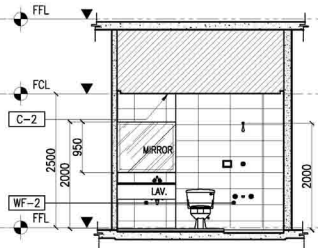
2 11F / OFFICE OF THE ANS TOILET DETAIL  
**BLOW-UP PLAN**  
SCALE: 1:50M



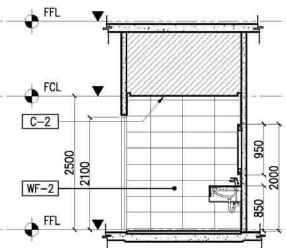
3 11F / OFFICE OF THE ANS TOILET DETAIL  
**REFLECTED CEILING PLAN**  
SCALE: 1:50M



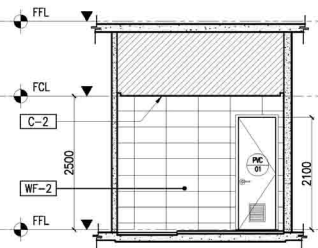
4 11F / OFFICE OF THE ANS TOILET DETAIL  
**ELEVATION THRU - A**  
SCALE: 1:50M



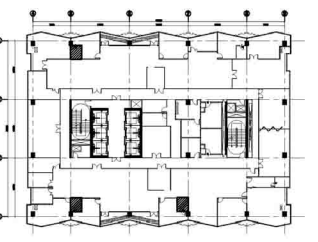
5 11F / OFFICE OF THE ANS TOILET DETAIL  
**ELEVATION THRU - B**  
SCALE: 1:50M



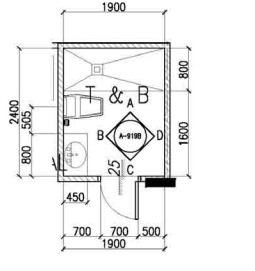
6 11F / OFFICE OF THE ANS TOILET DETAIL  
**ELEVATION THRU - C**  
SCALE: 1:50M



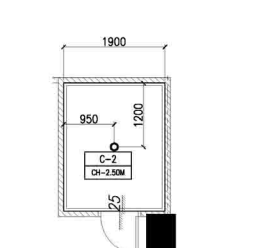
7 11F / OFFICE OF THE ANS TOILET DETAIL  
**ELEVATION THRU - D**  
SCALE: 1:50M



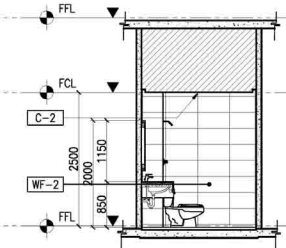
8 22F / HEAD OF DEPT. TYPICAL T&B DETAIL  
**KEY PLAN**  
SCALE: 1:500M



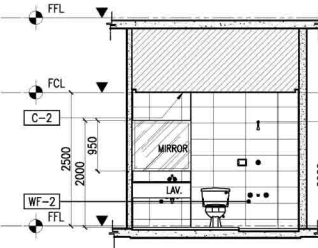
9 22F / HEAD OF DEPT. TYPICAL T&B DETAIL  
**BLOW-UP PLAN**  
SCALE: 1:50M



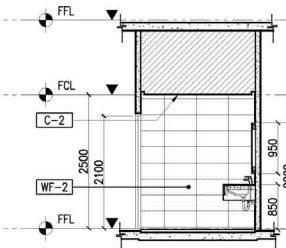
10 22F / HEAD OF DEPT. TYPICAL T&B DETAIL  
**REFLECTED CEILING PLAN**  
SCALE: 1:50M



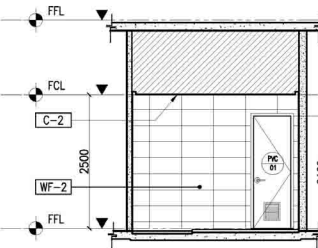
11 22F / HEAD OF DEPT. TYPICAL T&B DETAIL  
**ELEVATION THRU - A**  
SCALE: 1:50M



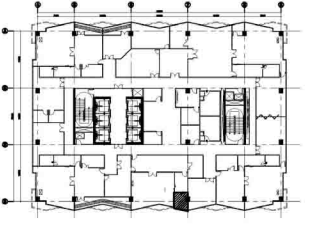
12 22F / HEAD OF DEPT. TYPICAL T&B DETAIL  
**ELEVATION THRU - B**  
SCALE: 1:50M



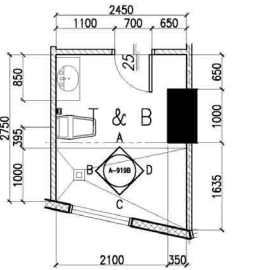
13 22F / HEAD OF DEPT. TYPICAL T&B DETAIL  
**ELEVATION THRU - C**  
SCALE: 1:50M



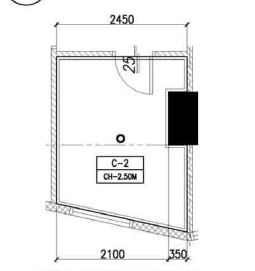
14 22F / HEAD OF DEPT. TYPICAL T&B DETAIL  
**ELEVATION THRU - D**  
SCALE: 1:50M



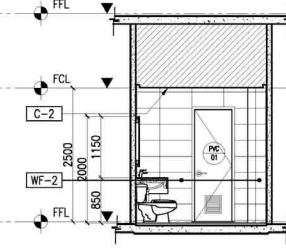
15 22F / OFFICE OF THE DNS T&B DETAIL  
**KEY PLAN**  
SCALE: 1:500M



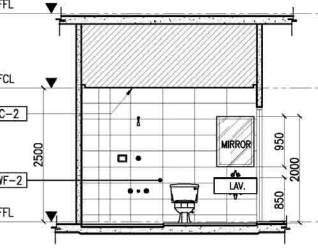
16 22F / OFFICE OF THE DNS T&B DETAIL  
**BLOW-UP PLAN**  
SCALE: 1:50M



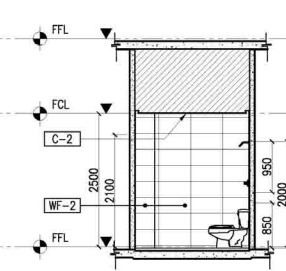
17 22F / OFFICE OF THE DNS T&B DETAIL  
**REFLECTED CEILING PLAN**  
SCALE: 1:50M



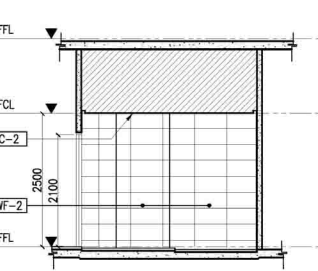
18 22F / OFFICE OF THE DNS T&B DETAIL  
**ELEVATION THRU - A**  
SCALE: 1:50M



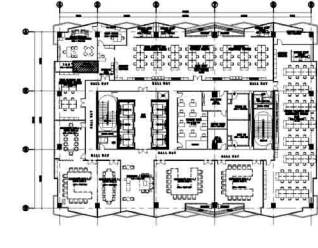
19 22F / OFFICE OF THE DNS T&B DETAIL  
**ELEVATION THRU - B**  
SCALE: 1:50M



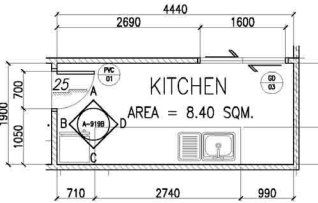
20 22F / OFFICE OF THE DNS T&B DETAIL  
**ELEVATION THRU - C**  
SCALE: 1:50M



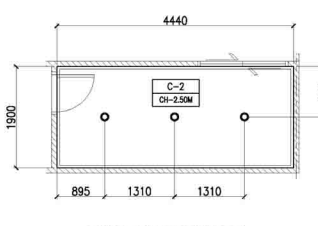
21 22F / OFFICE OF THE DNS T&B DETAIL  
**ELEVATION THRU - D**  
SCALE: 1:50M



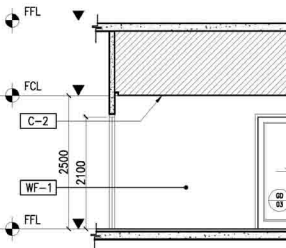
22 TYPICAL OFFICE KITCHEN DETAIL  
**KEY PLAN**  
SCALE: 1:500M



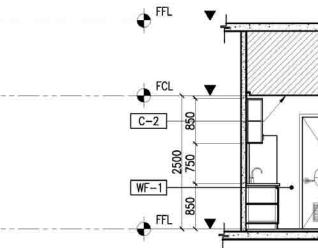
23 TYPICAL OFFICE KITCHEN DETAIL  
**BLOW-UP PLAN**  
SCALE: 1:50M



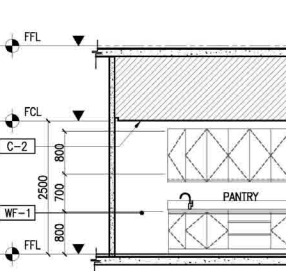
24 TYPICAL OFFICE KITCHEN DETAIL  
**REFLECTED CEILING PLAN**  
SCALE: 1:50M



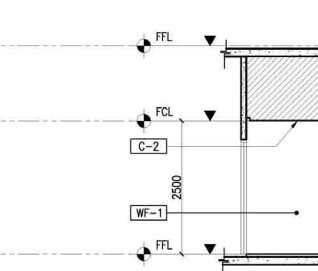
25 TYPICAL OFFICE KITCHEN DETAIL  
**ELEVATION THRU - A**  
SCALE: 1:50M



26 TYPICAL OFFICE KITCHEN DETAIL  
**ELEVATION THRU - B**  
SCALE: 1:50M



27 TYPICAL OFFICE KITCHEN DETAIL  
**ELEVATION THRU - C**  
SCALE: 1:50M



28 TYPICAL OFFICE KITCHEN DETAIL  
**ELEVATION THRU - D**  
SCALE: 1:50M