

EQUIPMENT SCHEDULE

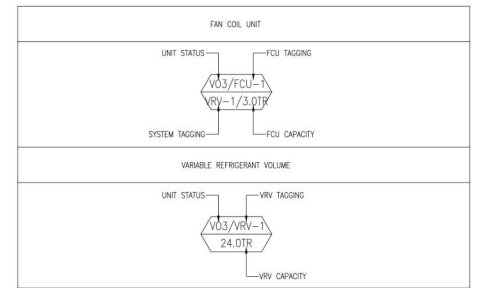
VO3-FAN COIL UNIT (FCU) W/ MATCHING VARIABLE REFRIGERANT VOLUME (VRV)

STATUS/UNIT	VARIABLE REFRIGERANT VOLUME (VRV)										FAN COIL UNIT (FCU)										REMARKS	
	TOTAL COOLING CAP. (HP)/(TR)	LOCATION	AREA SERVED	MODEL PER CAPACITY	QTY.	COMBINATION PER COOLING CAP. (KW/HP) / (BTU/HR)	REFRIGERANT TYPE	PIPING CONNECTIONS LIQUID (MM) GAS (MM)	INPUT (KW)	ELECTRICAL DATA VOLT PHASE HERTZ	EER	STATUS/UNIT	LOCATION	QTY.	TOTAL COOLING CAP. (KW/HP) / (BTU/HR)	MODEL TYPE	AIR FLOW RATE (CFM)	E.S.P. (Pa)	PIPING CONNECTIONS LIQUID (MM) GAS (MM)	INPUT (KW)		ELECTRICAL DATA VOLT PHASE HERTZ
VO3/VRV-1	28.0/23.5	ROOF DECK	23RD FLOOR	DAIKIN RXQ16AYM	1	45.0(16.0) / 154,000(13.0)	R-410A	12.704 28.604	12.90	3 60	11.94	VO3/FCU-2	23RD FLOOR	4	7.1(2.5) / 24,200(2.0)	4-WAY CEILING CASSETTE FREE BLOW	750	-	9.504 15.904	0.063	220 1 60	DAIKIN FXFQ63AVM
				DAIKIN RXQ12AYM	1	33.5(12.0) / 114,000(9.5)	R-410A	12.704 28.604	8.70	3 60	13.10	VO3/FCU-4	23RD FLOOR	3	11.2(4.0) / 38,200(3.0)	4-WAY CEILING CASSETTE FREE BLOW	1200	-	9.504 15.904	0.158	220 1 60	DAIKIN FXFQ100AVM
VO3/VRV-2	28.0/22.50	ROOF DECK	23RD FLOOR	DAIKIN RXQ16AYM	1	45.0(16.0) / 154,000(13.0)	R-410A	12.704 28.604	12.90	3 60	11.94	VO3/FCU-4	23RD FLOOR	2	14.0(5.0) / 47,800(4.0)	4-WAY CEILING CASSETTE FREE BLOW	1500	-	9.504 15.904	0.178	220 1 60	DAIKIN FXFQ125AVM
				DAIKIN RXQ12AYM	1	33.5(12.0) / 114,000(9.5)	R-410A	12.704 28.604	8.70	3 60	13.10	VO3/FCU-6	23RD FLOOR	1	7.1(2.5) / 24,200(2.0)	CEILING SUSPENDED FREE BLOW	750	-	9.504 15.904	0.145	220 1 60	DAIKIN FXHQ63MAVE
VO3/VRV-3	28.0/21.50	ROOF DECK	23RD FLOOR	DAIKIN RXQ16AYM	1	45.0(16.0) / 154,000(13.0)	R-410A	12.704 28.604	12.90	3 60	11.94	VO3/FCU-2	23RD FLOOR	1	7.1(2.5) / 24,200(2.0)	4-WAY CEILING CASSETTE FREE BLOW	750	-	9.504 15.904	0.063	220 1 60	DAIKIN FXFQ63AVM
				DAIKIN RXQ14AYM	1	40.0(14.0) / 136,000(11.50)	R-410A	12.704 28.604	10.70	3 60	12.71	VO3/FCU-4	23RD FLOOR	2	11.2(4.0) / 38,200(3.0)	4-WAY CEILING CASSETTE FREE BLOW	1200	-	9.504 15.904	0.158	220 1 60	DAIKIN FXFQ100AVM
				DAIKIN RXQ12AYM	1	33.5(12.0) / 114,000(9.5)	R-410A	12.704 28.604	8.70	3 60	13.10	VO3/FCU-5	23RD FLOOR	1	14.0(5.0) / 47,800(4.0)	4-WAY CEILING CASSETTE FREE BLOW	1500	-	9.504 15.904	0.178	220 1 60	DAIKIN FXFQ125AVM
				DAIKIN RXQ12AYM	1	33.5(12.0) / 114,000(9.5)	R-410A	12.704 28.604	8.70	3 60	13.10	VO3/FCU-8	23RD FLOOR	2	5.6(2.0) / 19,100(1.5)	WALL MOUNTED FREE BLOW	600	-	6.404 12.704	0.033	220 1 60	DAIKIN FXAQ50PVE
VO3/VRV-4	26.0/21.0	ROOF DECK	23RD FLOOR	DAIKIN RXQ14AYM	1	40.0(14.0) / 136,000(11.50)	R-410A	12.704 28.604	10.70	3 60	12.71	ADD/FCU-9	23RD FLOOR	1	7.1(2.5) / 24,200(2.0)	WALL MOUNTED FREE BLOW	750	-	9.504 15.904	0.050	220 1 60	DAIKIN FXAQ63PVE
				ADD/FCU-10	23RD FLOOR	2	2.2(0.75) / 7,500(0.60)	WALL MOUNTED FREE BLOW	225	-	6.404 12.704	0.019	220 1 60	DAIKIN FXAQ20PVE								
VO3/VRV-5	18.0/14.50	ROOF DECK	23RD FLOOR	DAIKIN RXQ12AYM	1	33.5(12.0) / 114,000(9.5)	R-410A	12.704 28.604	8.70	3 60	13.10	VO3/FCU-5	23RD FLOOR	2	14.0(5.0) / 47,800(4.0)	4-WAY CEILING CASSETTE FREE BLOW	1500	-	9.504 15.904	0.178	220 1 60	DAIKIN FXFQ125AVM
				VO3/FCU-2	23RD FLOOR	2	7.1(2.5) / 24,200(2.0)	4-WAY CEILING CASSETTE FREE BLOW	1200	-	9.504 15.904	0.063	220 1 60	DAIKIN FXFQ63AVM								
VO3/VRV-5	18.0/14.50	ROOF DECK	23RD FLOOR	DAIKIN RXQ18AYM	1	50.0(18.0) / 171,000(14.50)	R-410A	15.904 28.604	15.30	3 60	11.18	VO3/FCU-5	23RD FLOOR	2	14.0(5.0) / 47,800(4.0)	4-WAY CEILING CASSETTE FREE BLOW	1500	-	9.504 15.904	0.178	220 1 60	DAIKIN FXFQ125AVM

ADD-FAN COIL UNIT (FCU) W/ MATCHING VARIABLE REFRIGERANT VOLUME (VRV)

STATUS/UNIT	VARIABLE REFRIGERANT VOLUME (VRV)										FAN COIL UNIT (FCU)										REMARKS	
	TOTAL COOLING CAP. (HP)/(TR)	LOCATION	AREA SERVED	MODEL PER CAPACITY	QTY.	COMBINATION PER COOLING CAP. (KW/HP) / (BTU/HR)	REFRIGERANT TYPE	PIPING CONNECTIONS LIQUID (MM) GAS (MM)	INPUT (KW)	ELECTRICAL DATA VOLT PHASE HERTZ	EER	STATUS/UNIT	LOCATION	QTY.	TOTAL COOLING CAP. (KW/HP) / (BTU/HR)	MODEL TYPE	AIR FLOW RATE (CFM)	E.S.P. (Pa)	PIPING CONNECTIONS LIQUID (MM) GAS (MM)	INPUT (KW)		ELECTRICAL DATA VOLT PHASE HERTZ
VO3/VRV-0	18.0/15.0	ROOF DECK	23F HALLWAY 24F HALLWAY	DAIKIN RXQ18AYM	1	50.0(18.0) / 171,000(14.50)	R-410A	15.904 28.604	15.30	3 60	11.18	ADD/FCU-13	23F HALLWAY	6	3.6(1.5) / 12,300(1.20)	2-WAY CEILING CASSETTE FREE BLOW	600	-	6.404 12.704	0.039	220 1 60	DAIKIN FXCQ32AVM

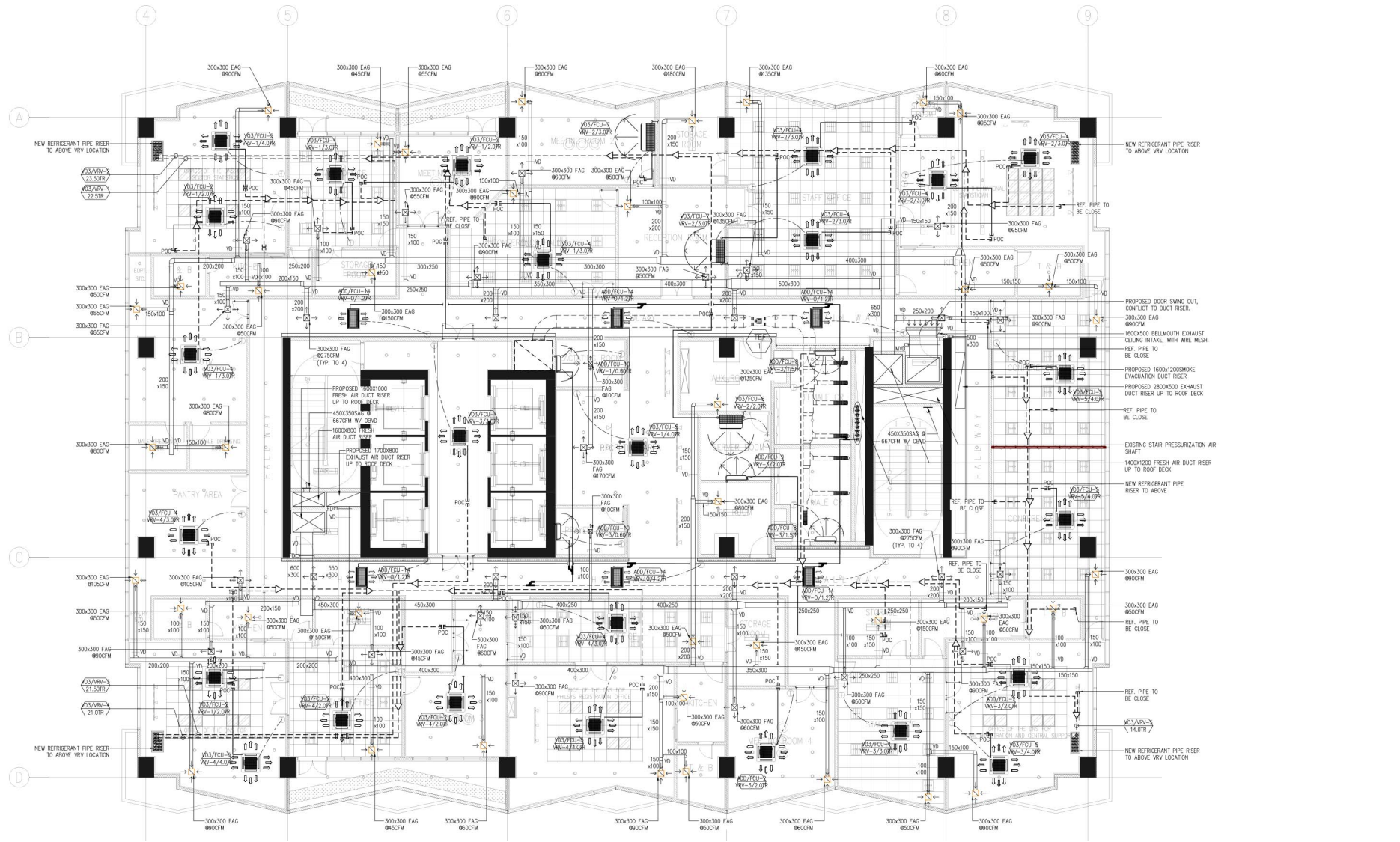
TAGGING DESCRIPTION:



LEGEND AND SYMBOLS/ABBREVIATION:

SYMBOLS	DESCRIPTION
[Symbol]	4-WAY CEILING CASSETTE TYPE FREEBLOW
[Symbol]	2-WAY CEILING CASSETTE TYPE FREEBLOW
[Symbol]	WALL MOUNTED TYPE FREEBLOW
[Symbol]	CEILING SUSPENDED TYPE FREEBLOW
[Symbol]	NEW REFRIGERANT PIPE
[Symbol]	NEW REFRIGERANT PIPE RISER
[Symbol]	NEW REFNET JOINT
[Symbol]	EXISTING REFRIGERANT PIPE
[Symbol]	EXISTING REFNET JOINT
[Symbol]	THERMOSTAT
[Symbol]	EXISTING EXHAUST AIR FAN
[Symbol]	EXISTING EXHAUST AIR DUCT
[Symbol]	EXISTING EXHAUST AIR GRILLE
[Symbol]	EXISTING FLEXIBLE EXHAUST AIR DUCT
[Symbol]	NEW FRESH AIR DUCT RISER
[Symbol]	NEW EXHAUST AIR DUCT RISER
[Symbol]	MOTORIZED VOLUME DAMPER
[Symbol]	VOLUME DAMPER
[Symbol]	NEW FRESH AND EXHAUST AIR DUCT
[Symbol]	NEW EXHAUST AIR GRILLE
[Symbol]	NEW FRESH AIR GRILLE
[Symbol]	NEW SMOKE CEILING EXHAUST AIR GRILLE
[Symbol]	NEW SMOKE CEILING EXHAUST BELLMOUTH GRILLE

ABBREVIATION	DESCRIPTION
SQ.M	SQUARE METER
CFM	CUBIC FEET PER MINUTE
MM	MILLIMETER
KW	KILOWATT
KG	KILOGRAM
Ø	DIAMETER
QTY.	QUANTITY
TSP	TOTAL STATIC PRESSURE
Pa	PASCAL
V/PH/Hz	VOLTS/PHASE/HERTZ
FCU	FAN COIL UNIT
EAG	EXHAUST AIR GRILLE
FAG	FRESH AIR GRILLE
EAD	EXHAUST AIR DUCT
FAD	FRESH AIR DUCT
SAD	SUPPLY AIR DUCT
RAD	RETURN AIR DUCT
PAD	PRESSURIZATION AIR DUCT
SCD	SUPPLY CEILING DIFFUSER
LD	LOUVER DOOR



NOTE:  
PURSUANT TO SECTION 4 OF ANNEX "A" OF THE REVISED IMPLEMENTING RULES AND REGULATIONS OF R.A. 9194, APPROVAL BY THE AUTHORIZED DPWH OFFICIALS OF DETAILED ENGINEERING SURVEYS AND DESIGN UNDERTAKEN BY CONSULTANTS NEITHER DIMINISHES THE RESPONSIBILITY OF THE LATTER FOR THE TECHNICAL INTEGRITY OF THE SURVEYS AND DESIGN NOR TRANSFER ANY PART OF THAT RESPONSIBILITY TO THE APPROVING OFFICIALS.  
THE DESIGN CONSULTANT SHALL BE HELD RESPONSIBLE FOR THE FAILURE OF THE FACILITY/IES / STRUCTURES DUE TO FAULTY DESIGN EXCEPT FOR THE CHANGES MADE WITHOUT THE CONFORMITY OF THE CONSULTANTS.

DRAWINGS AND SPECIFICATIONS DULY SIGNED, STAMPED OR SEALED, AS INSTRUMENTS OF SERVICE, ARE PROPERTY AND DOCUMENTS OF THE ARCHITECT. WHETHER THE OBJECT FOR WHICH THEY ARE MADE IS EXECUTED OR NOT, IT SHALL BE UNLAWFUL FOR ANY PERSON, WITHOUT THE WRITTEN CONSENT OF THE ARCHITECT OR AUTHOR OF SAID DOCUMENTS, TO DUPLICATE OR TO MAKE COPIES OF SAID DOCUMENTS FOR USE IN THE REPEITION OF AND FOR OTHER PROJECTS OR BUILDINGS, WHETHER EXECUTED PARTLY OR IN WHOLE.

1 23RD FLOOR ACMV LAYOUT  
M-25 SCALE 1:100 M.

NOTE:  
THERMOSTAT LOCATION ON PLAN IS FOR REFERENCE ONLY. IT CAN BE RELOCATED BUT THE DISTANCE OF THERMOSTAT SHOULD BE MAXIMUM OF 3.0 - 4.0 METERS FROM THE FCU.