

EQUIPMENT SCHEDULE

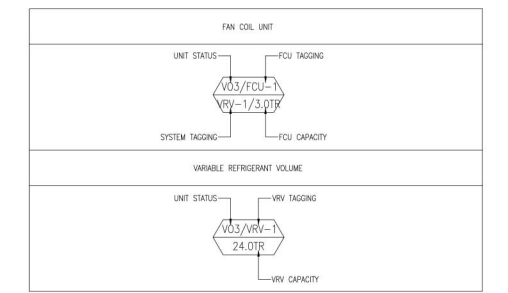
VO3-FAN COIL UNIT (FCU) W/ MATCHING VARIABLE REFRIGERANT VOLUME (VRV)

STATUS/UNIT	VARIABLE REFRIGERANT VOLUME (VRV)										FAN COIL UNIT (FCU)										REMARKS
	TOTAL COOLING CAP. (HP)/(TR)	LOCATION	AREA SERVE	MODEL PER CAPACITY	QTY.	COMBINATION PER COOLING CAP. (KW/HP) / (BTU/HR)	REFRIGERANT TYPE	PPING CONNECTIONS LIQUID (MM) GAS (MM) INPUT (KW)	ELECTRICAL DATA VOLT PHASE HERTZ	EER	STATUS/UNIT	LOCATION	QTY.	TOTAL COOLING CAP. (KW/HP) / (BTU/HR)	MODEL TYPE	AIR FLOW RATE (CFM)	E.S.P. (Pa)	PPING CONNECTIONS LIQUID (MM) GAS (MM) INPUT (KW)	ELECTRICAL DATA VOLT PHASE HERTZ	BASS OF DESIGN (MODEL)	
VO3/VRV-1	32.0/26.0	ROOF DECK	21ST FLOOR	DAIKIN RXQ18AYM	1	50.0(18.0) / 171,000(14.50)	R-410A	15.90" 28.60" 15.30	380 3 60	11.18	VO3/FCU-5	21ST FLOOR	5	14.0(5.0) / 47,800(4.0)	4-WAY CEILING CASSETTE FREE BLOW	1500	-	9.50" 15.90"	0.178 220 1 60	DAIKIN FXFQ125AVM	
				DAIKIN RXQ14AYM	1	40.0(14.0) / 136,000(11.50)	R-410A	12.70" 28.60" 10.70	380 3 60	12.71	VO3/FCU-6	21ST FLOOR	1	7.1(2.5) / 24,200(2.0)	CEILING SUSPENDED FREE BLOW	750	-	9.50" 15.90"	0.145 220 1 60	DAIKIN FXHQ63MAVE	
VO3/VRV-2	16.0/12.5	ROOF DECK	21ST FLOOR	DAIKIN RXQ16AYM	1	45.0(16.0) / 154,000(13.0)	R-410A	12.70" 28.60" 12.90	380 3 60	11.94	VO3/FCU-4	21ST FLOOR	1	11.2(4.0) / 38,200(3.0)	4-WAY CEILING CASSETTE FREE BLOW	1200	-	9.50" 15.90"	0.158 220 1 60	DAIKIN FXFQ100AVM	
				DAIKIN RXQ12AYM	1	33.5(12.0) / 114,000(9.50)	R-410A	12.70" 28.60" 8.70	380 3 60	13.10	VO3/FCU-5	21ST FLOOR	1	14.0(5.0) / 47,800(4.0)	4-WAY CEILING CASSETTE FREE BLOW	1500	-	9.50" 15.90"	0.178 220 1 60	DAIKIN FXFQ125AVM	
VO3/VRV-3	8.0/6.0	ROOF DECK	21ST FLOOR	DAIKIN RXQ8AYM	1	22.4(8.0) / 76,400(6.0)	R-410A	9.50" 19.10" 5.17	380 3 60	14.78	VO3/FCU-2	21ST FLOOR	3	7.1(2.5) / 24,200(2.0)	4-WAY CEILING CASSETTE FREE BLOW	750	-	9.50" 15.90"	0.063 220 1 60	DAIKIN FXHQ63AVM	
				DAIKIN RXQ12AYM	1	33.5(12.0) / 114,000(9.50)	R-410A	12.70" 28.60" 8.70	380 3 60	13.10	VO3/FCU-5	21ST FLOOR	3	14.0(5.0) / 47,800(4.0)	4-WAY CEILING CASSETTE FREE BLOW	1500	-	9.50" 15.90"	0.178 220 1 60	DAIKIN FXFQ125AVM	
VO3/VRV-4	24.0/19.0	ROOF DECK	21ST FLOOR	DAIKIN RXQ12AYM	1	33.5(12.0) / 114,000(9.50)	R-410A	12.70" 28.60" 8.70	380 3 60	13.10	VO3/FCU-2	21ST FLOOR	2	7.1(2.5) / 24,200(2.0)	4-WAY CEILING CASSETTE FREE BLOW	750	-	9.50" 15.90"	0.063 220 1 60	DAIKIN FXHQ63AVM	
				DAIKIN RXQ12AYM	1	33.5(12.0) / 114,000(9.50)	R-410A	12.70" 28.60" 8.70	380 3 60	13.10	VO3/FCU-4	21ST FLOOR	1	11.2(4.0) / 38,200(3.0)	4-WAY CEILING CASSETTE FREE BLOW	1200	-	9.50" 15.90"	0.158 220 1 60	DAIKIN FXFQ100AVM	
VO3/VRV-5	26.0/20.5	ROOF DECK	21ST FLOOR	DAIKIN RXQ14AYM	1	40.0(14.0) / 136,000(11.50)	R-410A	12.70" 28.60" 10.70	380 3 60	12.71	VO3/FCU-5	21ST FLOOR	2	14.0(5.0) / 47,800(4.0)	4-WAY CEILING CASSETTE FREE BLOW	1500	-	9.50" 15.90"	0.178 220 1 60	DAIKIN FXFQ125AVM	
				DAIKIN RXQ12AYM	1	33.5(12.0) / 114,000(9.50)	R-410A	12.70" 28.60" 8.70	380 3 60	13.10	VO3/FCU-8	21ST FLOOR	1	5.6(2.0) / 19,100(1.5)	WALL MOUNTED FREE BLOW	600	-	6.40" 12.70"	0.033 220 1 60	DAIKIN FXAQ50PVE	
				DAIKIN RXQ12AYM	1	33.5(12.0) / 114,000(9.50)	R-410A	12.70" 28.60" 8.70	380 3 60	13.10	VO3/FCU-2	21ST FLOOR	2	7.1(2.5) / 24,200(2.0)	4-WAY CEILING CASSETTE FREE BLOW	750	-	9.50" 15.90"	0.063 220 1 60	DAIKIN FXHQ63AVM	

ADD-FAN COIL UNIT (FCU) W/ MATCHING VARIABLE REFRIGERANT VOLUME (VRV)

STATUS/UNIT	VARIABLE REFRIGERANT VOLUME (VRV)										FAN COIL UNIT (FCU)										REMARKS
	TOTAL COOLING CAP. (HP)/(TR)	LOCATION	AREA SERVE	MODEL PER CAPACITY	QTY.	COMBINATION PER COOLING CAP. (KW/HP) / (BTU/HR)	REFRIGERANT TYPE	PPING CONNECTIONS LIQUID (MM) GAS (MM) INPUT (KW)	ELECTRICAL DATA VOLT PHASE HERTZ	EER	STATUS/UNIT	LOCATION	QTY.	TOTAL COOLING CAP. (KW/HP) / (BTU/HR)	MODEL TYPE	AIR FLOW RATE (CFM)	E.S.P. (Pa)	PPING CONNECTIONS LIQUID (MM) GAS (MM) INPUT (KW)	ELECTRICAL DATA VOLT PHASE HERTZ	BASS OF DESIGN (MODEL)	
ADD/VRV-L	22.0/17.0	ROOF DECK	20F HALLWAY 21F HALLWAY 22F HALLWAY	ADD/FCU-13	4	3.6(1.5) / 12,300(1.20)	R-410A	6.40" 12.70"	0.039 220 1 60		ADD/FCU-9	21ST FLOOR	1	7.1(2.5) / 24,200(2.0)	2-WAY CEILING CASSETTE FREE BLOW	600	-	6.40" 12.70"	0.039 220 1 60	DAIKIN FXQ323AVM	
ADD/VRV-M	28.0/22.3	ROOF DECK	20TH FLOOR 21ST FLOOR	ADD/FCU-9	21ST FLOOR	2	7.1(2.5) / 24,200(2.0)	R-410A	9.50" 15.90"	0.050 220 1 60	ADD/FCU-12	21ST FLOOR	2	4.5 (1.5) / 15,400(1.20)	WALL MOUNTED FREE BLOW	450	-	6.40" 12.70"	0.020 220 1 60	DAIKIN FXAQ63PVE	
				VO3/FCU-2	21ST FLOOR	3	7.1(2.5) / 24,200(2.0)	R-410A	9.50" 15.90"	0.063 220 1 60	DAIKIN FXFQ63AVM										
				VO3/FCU-3	21ST FLOOR	1	9.0(3.2) / 30,700(2.5)	R-410A	9.50" 15.90"	0.096 220 1 60	DAIKIN FXFQ80AVM										

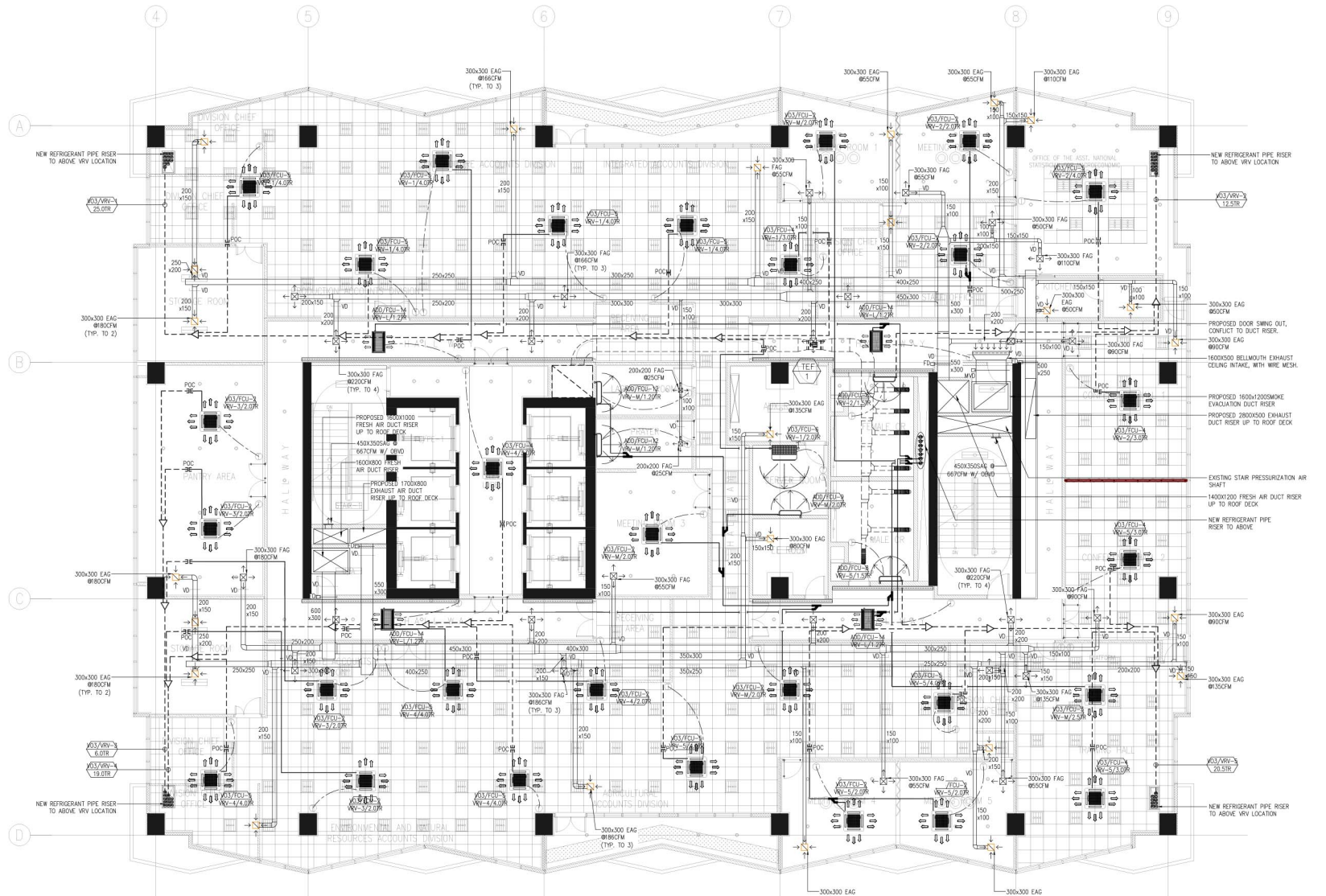
TAGGING DESCRIPTION:



LEGEND AND SYMBOLS/ABBREVIATION:

SYMBOLS	DESCRIPTION
[Symbol]	4-WAY CEILING CASSETTE TYPE FREEBLOW
[Symbol]	2-WAY CEILING CASSETTE TYPE FREEBLOW
[Symbol]	WALL MOUNTED TYPE FREEBLOW
[Symbol]	CEILING SUSPENDED TYPE FREEBLOW
[Symbol]	NEW REFRIGERANT PIPE
[Symbol]	NEW REFRIGERANT PIPE RISER
[Symbol]	NEW REFNET JOINT
[Symbol]	EXISTING REFRIGERANT PIPE
[Symbol]	EXISTING REFNET JOINT
[Symbol]	THERMOSTAT
[Symbol]	EXISTING EXHAUST AIR FAN
[Symbol]	EXISTING EXHAUST AIR DUCT
[Symbol]	EXISTING EXHAUST AIR GRILLE
[Symbol]	EXISTING FLEXIBLE EXHAUST AIR DUCT
[Symbol]	NEW FRESH AIR DUCT RISER
[Symbol]	NEW EXHAUST AIR DUCT RISER
[Symbol]	MOTORIZED VOLUME DAMPER
[Symbol]	VOLUME DAMPER
[Symbol]	NEW FRESH AND EXHAUST AIR DUCT
[Symbol]	NEW EXHAUST AIR GRILLE
[Symbol]	NEW FRESH AIR GRILLE
[Symbol]	NEW SMOKE CEILING EXHAUST AIR GRILLE
[Symbol]	NEW SMOKE CEILING EXHAUST BELLMOUTH GRILLE

ABBREVIATION	DESCRIPTION
SQ.M	SQUARE METER
CFM	CUBIC FEET PER MINUTE
MM	MILLIMETER
KW	KILOWATT
KG	KILOGRAM
DIA. (ø)	DIAMETER
QTY.	QUANTITY
TSP	TOTAL STATIC PRESSURE
Pa	PASCAL
V/PH/Hz	VOLTS/PHASE/HERTZ
FCU	FAN COIL UNIT
EAG	EXHAUST AIR GRILLE
FAG	FRESH AIR GRILLE
EAD	EXHAUST AIR DUCT
FAD	FRESH AIR DUCT
SAD	SUPPLY AIR DUCT
RAD	RETURN AIR DUCT
PAD	PRESSURIZATION AIR DUCT
SCD	SUPPLY CEILING DIFFUSER
LD	LOUVER DOOR



1 M-23 21ST FLOOR ACMV LAYOUT SCALE 1:100 M.

NOTE: THERMOSTAT LOCATION ON PLAN IS FOR REFERENCE ONLY. IT CAN BE RELOCATED BUT THE DISTANCE OF THERMOSTAT SHOULD BE MAXIMUM OF 3.0 - 4.0 METERS FROM THE FCU.

NOTE: PURSUANT TO SECTION 4 OF ANNEX "A" OF THE REVISED IMPLEMENTING RULES AND REGULATIONS OF R.A. 9194, APPROVAL BY THE AUTHORIZED DPWH OFFICIALS OF DETAILED ENGINEERING SURVEYS AND DESIGN UNDERTAKEN BY CONSULTANTS NEITHER DIMINISHES THE RESPONSIBILITY OF THE LATTER FOR THE TECHNICAL INTEGRITY OF THE SURVEYS AND DESIGN NOR TRANSFER ANY PART OF THAT RESPONSIBILITY TO THE APPROVING OFFICIALS.

THE DESIGN CONSULTANT SHALL BE HELD RESPONSIBLE FOR THE FAILURE OF THE FACILITIES / STRUCTURES DUE TO FAULTY DESIGN EXCEPT FOR THE CHANGES MADE WITHOUT THE CONFORMITY OF THE CONSULTANTS.