

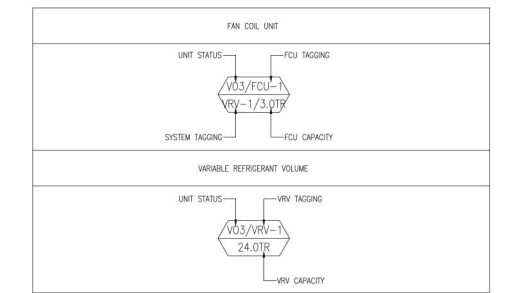
EQUIPMENT SCHEDULE
V03-FAN COIL UNIT (FCU) W/ MATCHING VARIABLE REFRIGERANT VOLUME (VRV)

STATUS/UNIT	VARIABLE REFRIGERANT VOLUME (VRV)										FAN COIL UNIT (FCU)										REMARKS					
	TOTAL COOLING CAP. (kW/RT)	LOCATION	AREA SERVE	MODEL PER CAPACITY	QTY.	COMBINATION PER COOLING CAP. (kW/RT) / BTU(HR)	REFRIGERANT TYPE	PIPING CONNECTIONS LIQUID (MM) GAS (MM)	INPUT (kW)	VOLT	PHASE	HERTZ	EER	STATUS/UNIT	LOCATION	QTY.	TOTAL COOLING CAP. (kW/RT) / BTU(HR)	MODEL TYPE	AIR FLOW RATE (CFM)	E.S.P. (Pa)		PIPING CONNECTIONS LIQUID (MM) GAS (MM)	INPUT (kW)	VOLT	PHASE	HERTZ
V03/VRV-1	32.0/26.0	ROOF DECK	20TH FLOOR	DAIKIN RXQ18AYM	1	50.0(18.0) / 171,000(14.50)	R-410A	15.90x 28.60x	15.30	380	3	60	11.18	V03/FCU-5	20TH FLOOR	5	14.0(5.0) / 47,800(4.0)	4-WAY CEILING CASSETTE FREE BLOW	1500	-	9.50x 15.90x	0.178	220	1	60	DAIKIN FXFQ125AVM
				DAIKIN RXQ14AYM	1	40.0(14.0) / 136,000(11.50)	R-410A	12.70x 28.60x	10.70	380	3	60	12.71	V03/FCU-4	20TH FLOOR	1	11.2(4.0) / 38,200(3.0)	4-WAY CEILING CASSETTE FREE BLOW	1200	-	9.50x 15.90x	0.158	220	1	60	DAIKIN FXFQ100AVM
V03/VRV-2	20.0/15.5	ROOF DECK	20TH FLOOR	DAIKIN RXQ20AYM	1	56.0(20.0) / 191,000(16.0)	R-410A	15.90x 28.60x	17.70	380	3	60	10.79	V03/FCU-5	20TH FLOOR	1	14.0(5.0) / 47,800(4.0)	4-WAY CEILING CASSETTE FREE BLOW	1500	-	9.50x 15.90x	0.178	220	1	60	DAIKIN FXFQ125AVM
				DAIKIN RXQ10AYM	2	11.2(4.0) / 38,200(3.0)	R-410A	12.70x 28.60x	10.70	380	3	60	13.10	V03/FCU-4	20TH FLOOR	2	11.2(4.0) / 38,200(3.0)	4-WAY CEILING CASSETTE FREE BLOW	1200	-	9.50x 15.90x	0.158	220	1	60	DAIKIN FXFQ100AVM
V03/VRV-3	8.0/6.0	ROOF DECK	20TH FLOOR	DAIKIN RXQ8AYM	1	22.4(8.0) / 76,400(6.0)	R-410A	9.50x 19.10x	5.17	380	3	60	14.78	V03/FCU-2	20TH FLOOR	2	7.1(2.5) / 24,200(2.0)	4-WAY CEILING CASSETTE FREE BLOW	750	-	9.50x 15.90x	0.063	220	1	60	DAIKIN FXFQ83AVM
				DAIKIN RXQ12AYM	1	22.4(8.0) / 76,400(6.0)	R-410A	9.50x 19.10x	5.17	380	3	60	14.78	V03/FCU-8	20TH FLOOR	1	5.6(2.0) / 19,100(1.5)	WALL MOUNTED FREE BLOW	600	-	6.40x 12.70x	0.033	220	1	60	DAIKIN FXAQ50PVE
V03/VRV-4	22.0/17.50	ROOF DECK	20TH FLOOR	DAIKIN RXQ10AYM	1	28.0(10.0) / 95,500(8.0)	R-410A	9.50x 22.20x	6.84	380	3	60	13.96	V03/FCU-5	20TH FLOOR	2	14.0(5.0) / 47,800(4.0)	4-WAY CEILING CASSETTE FREE BLOW	1500	-	9.50x 15.90x	0.178	220	1	60	DAIKIN FXFQ125AVM
				DAIKIN RXQ12AYM	1	33.5(12.0) / 114,000(9.50)	R-410A	12.70x 28.60x	8.70	380	3	60	13.10	V03/FCU-2	20TH FLOOR	1	7.1(2.5) / 24,200(2.0)	4-WAY CEILING CASSETTE FREE BLOW	750	-	9.50x 15.90x	0.063	220	1	60	DAIKIN FXFQ83AVM
V03/VRV-5	22.0/17.50	ROOF DECK	20TH FLOOR	DAIKIN RXQ10AYM	1	28.0(10.0) / 95,500(8.0)	R-410A	9.50x 22.20x	6.84	380	3	60	13.96	V03/FCU-4	20TH FLOOR	1	11.2(4.0) / 38,200(3.0)	4-WAY CEILING CASSETTE FREE BLOW	1200	-	9.50x 15.90x	0.158	220	1	60	DAIKIN FXFQ100AVM
				DAIKIN RXQ12AYM	1	33.5(12.0) / 114,000(9.50)	R-410A	12.70x 28.60x	8.70	380	3	60	13.10	V03/FCU-8	20TH FLOOR	1	5.6(2.0) / 19,100(1.5)	WALL MOUNTED FREE BLOW	600	-	6.40x 12.70x	0.033	220	1	60	DAIKIN FXAQ50PVE
V03/VRV-6	8.0/6.0	ROOF DECK	20TH FLOOR	DAIKIN RXQ8AYM	1	22.4(8.0) / 76,400(6.0)	R-410A	9.50x 19.10x	5.17	380	3	60	14.78	V03/FCU-5	20TH FLOOR	3	14.0(5.0) / 47,800(4.0)	4-WAY CEILING CASSETTE FREE BLOW	1500	-	9.50x 15.90x	0.178	220	1	60	DAIKIN FXFQ125AVM
				DAIKIN RXQ12AYM	1	33.5(12.0) / 114,000(9.50)	R-410A	12.70x 28.60x	8.70	380	3	60	13.10	ADD/FCU-12	20TH FLOOR	1	4.5 (1.5) / 15,400(1.20)	WALL MOUNTED FREE BLOW	450	-	6.40x 12.70x	0.020	220	1	60	DAIKIN FXAQ40PVE

ADD-FAN COIL UNIT (FCU) W/ MATCHING VARIABLE REFRIGERANT VOLUME (VRV)

STATUS/UNIT	VARIABLE REFRIGERANT VOLUME (VRV)										FAN COIL UNIT (FCU)										REMARKS					
	TOTAL COOLING CAP. (kW/RT)	LOCATION	AREA SERVE	MODEL PER CAPACITY	QTY.	COMBINATION PER COOLING CAP. (kW/RT) / BTU(HR)	REFRIGERANT TYPE	PIPING CONNECTIONS LIQUID (MM) GAS (MM)	INPUT (kW)	VOLT	PHASE	HERTZ	EER	STATUS/UNIT	LOCATION	QTY.	TOTAL COOLING CAP. (kW/RT) / BTU(HR)	MODEL TYPE	AIR FLOW RATE (CFM)	E.S.P. (Pa)		PIPING CONNECTIONS LIQUID (MM) GAS (MM)	INPUT (kW)	VOLT	PHASE	HERTZ
V03/VRV-L	22.0/17.0	ROOF DECK	20F HALLWAY 21F HALLWAY 22F HALLWAY	DAIKIN RXQ12AYM	1	33.5(12.0) / 114,000(9.50)	R-410A	12.70x 28.60x	8.70	380	3	60	13.10	ADD/FCU-13	20F HALLWAY	4	3.6(1.5) / 12,300(1.20)	2-WAY CEILING CASSETTE FREE BLOW	600	-	6.40x 12.70x	0.039	220	1	60	DAIKIN FXQ332AVM
				DAIKIN RXQ10AYM	1	28.0(10.0) / 95,500(8.0)	R-410A	9.50x 22.20x	6.84	380	3	60	13.96	V03/FCU-2	20TH FLOOR	1	7.1(2.5) / 24,200(2.0)	4-WAY CEILING CASSETTE FREE BLOW	750	-	9.50x 15.90x	0.063	220	1	60	DAIKIN FXFQ83AVM
ADD/VRV-M	28.0/22.3	ROOF DECK	20TH FLOOR 21ST FLOOR	DAIKIN RXQ16AYM	1	45.0(16.0) / 154,000(13.0)	R-410A	12.70x 28.60x	12.90	380	3	60	11.94	V03/FCU-4	20TH FLOOR	1	11.2(4.0) / 38,200(3.0)	4-WAY CEILING CASSETTE FREE BLOW	1200	-	9.50x 15.90x	0.158	220	1	60	DAIKIN FXFQ100AVM
				DAIKIN RXQ12AYM	1	33.5(12.0) / 114,000(9.50)	R-410A	12.70x 28.60x	8.70	380	3	60	13.10	ADD/FCU-12	20TH FLOOR	2	4.5 (1.5) / 15,400(1.20)	WALL MOUNTED FREE BLOW	450	-	6.40x 12.70x	0.020	220	1	60	DAIKIN FXAQ40PVE
													ADD/FCU-9	20TH FLOOR	1	7.1(2.5) / 24,200(2.0)	WALL MOUNTED FREE BLOW	750	-	9.50x 15.90x	0.050	220	1	60	DAIKIN FXAQ50PVE	

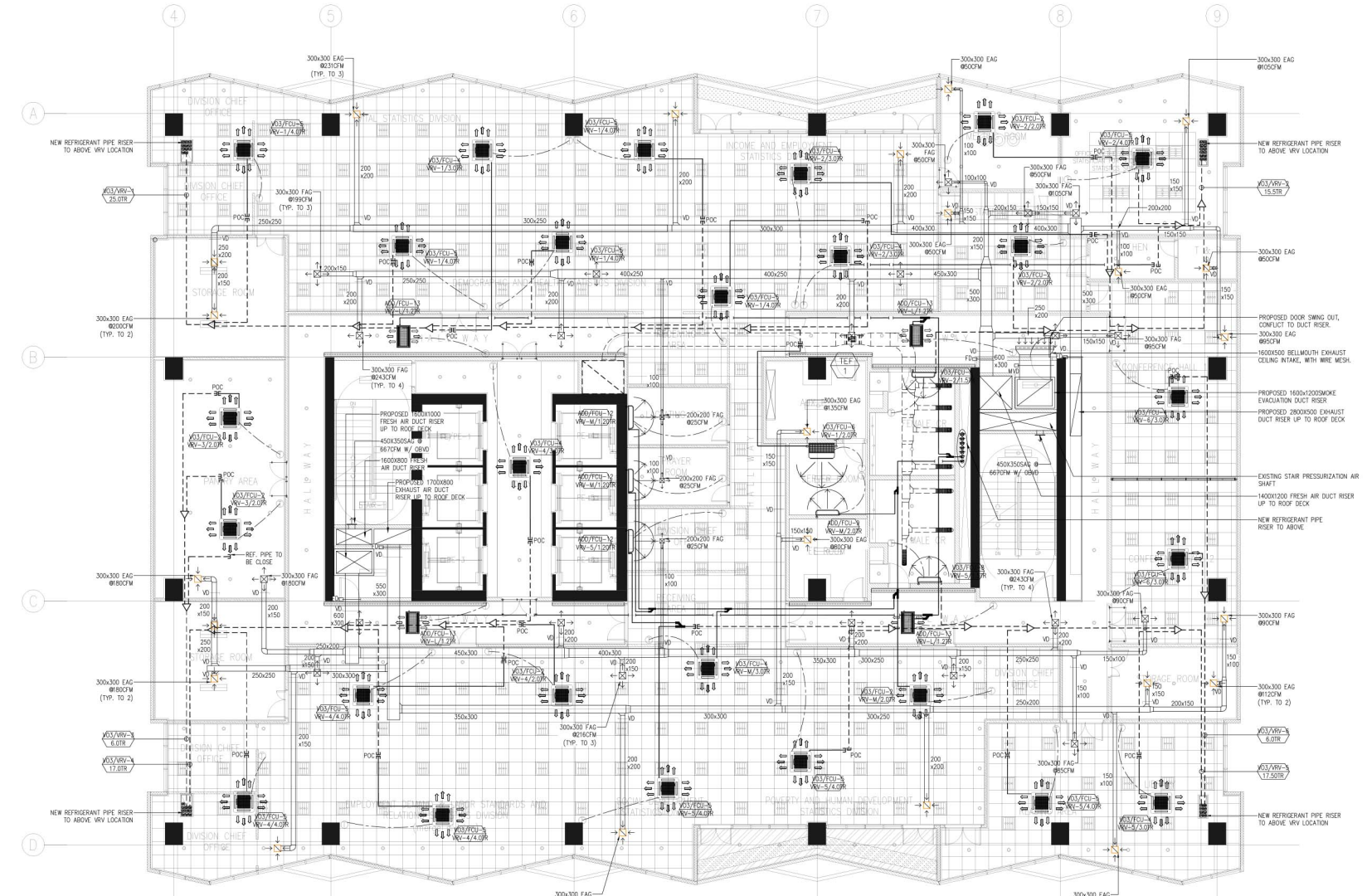
TAGGING DESCRIPTION:



LEGEND AND SYMBOLS/ABBREVIATION:

SYMBOLS	DESCRIPTION
[Symbol]	4-WAY CEILING CASSETTE TYPE FREEBLOW
[Symbol]	2-WAY CEILING CASSETTE TYPE FREEBLOW
[Symbol]	WALL MOUNTED TYPE FREEBLOW
[Symbol]	CEILING SUSPENDED TYPE FREEBLOW
[Symbol]	NEW REFRIGERANT PIPE
[Symbol]	NEW REFRIGERANT PIPE RISER
[Symbol]	NEW REFINET JOINT
[Symbol]	EXISTING REFRIGERANT PIPE
[Symbol]	EXISTING REFINET JOINT
[Symbol]	THERMOSTAT
[Symbol]	EXISTING EXHAUST AIR FAN
[Symbol]	EXISTING EXHAUST AIR DUCT
[Symbol]	EXISTING EXHAUST AIR GRILLE
[Symbol]	EXISTING FLEXIBLE EXHAUST AIR DUCT
[Symbol]	NEW FRESH AIR DUCT RISER
[Symbol]	NEW EXHAUST AIR DUCT RISER
[Symbol]	MOTORIZED VOLUME DAMPER
[Symbol]	VOLUME DAMPER
[Symbol]	NEW FRESH AND EXHAUST AIR DUCT
[Symbol]	NEW EXHAUST AIR GRILLE
[Symbol]	NEW FRESH AIR GRILLE
[Symbol]	NEW SMOKE CEILING EXHAUST AIR GRILLE
[Symbol]	NEW SMOKE CEILING EXHAUST BELLMOUTH GRILLE

ABBREVIATION	DESCRIPTION
SQ.M	SQUARE METER
CFM	CUBIC FEET PER METER
MM	MILLIMETER
KW	KILOWATT
KG	KILOGRAM
DI. (ø)	DIAMETER
QTY.	QUANTITY
TSP	TOTAL STATIC PRESSURE
Pa	PASCAL
V/PH/Hz	VOLTS/PHASE/HERTZ
FCU	FAN COIL UNIT
EAG	EXHAUST AIR GRILLE
FAG	FRESH AIR GRILLE
EAD	EXHAUST AIR DUCT
FAD	FRESH AIR DUCT
SAD	SUPPLY AIR DUCT
RAD	RETURN AIR DUCT
PAD	PRESSURIZATION AIR DUCT
SCD	SUPPLY CEILING DIFFUSER
LD	LOUVER DOOR



1
M-22
20TH FLOOR ACMV LAYOUT
SCALE 1:100 M.

NOTE:
THERMOSTAT LOCATION ON PLAN IS FOR REFERENCE ONLY, IT CAN BE RELOCATED BUT THE DISTANCE OF THERMOSTAT SHOULD BE MAXIMUM OF 3.0 - 4.0 METERS FROM THE FCU.

NOTE:
PURSUANT TO SECTION 4 OF ANNEX "A" OF THE REVISED IMPLEMENTING RULES AND REGULATIONS OF R.A. 9164, APPROVAL BY THE AUTHORIZED DPWH OFFICIALS OF DETAILED ENGINEERING SURVEYS AND DESIGN UNDERTAKEN BY CONSULTANTS NEITHER DIMINISHES THE RESPONSIBILITY OF THE LATTER FOR THE TECHNICAL INTEGRITY OF THE SURVEYS AND DESIGN NOR TRANSFER ANY PART OF THAT RESPONSIBILITY TO THE APPROVING OFFICIALS.
THE DESIGN CONSULTANT SHALL BE HELD RESPONSIBLE FOR THE FAILURE OF THE FACILITY/ES / STRUCTURES DUE TO FAULTY DESIGN EXCEPT FOR THE CHANGES MADE WITHOUT THE CONFORMITY OF THE CONSULTANTS.

DRAWINGS AND SPECIFICATIONS DULY SIGNED, STAMPED OR SEALED, AS INSTRUMENTS OF SERVICE ARE PROPERTY AND DOCUMENTS OF THE ARCHITECT, WHETHER THE OBJECT FOR WHICH THEY ARE MADE IS EXECUTED OR NOT. IT SHALL BE UNLAWFUL FOR ANY PERSON, WITHOUT THE WRITTEN CONSENT OF THE ARCHITECT OR AUTHOR OF SAID DOCUMENTS, TO DUPLICATE OR TO MAKE COPIES OF SAID DOCUMENTS FOR USE IN THE REPEITION OF AND FOR OTHER PROJECTS OR BUILDINGS, WHETHER EXECUTED PARTLY OR IN WHOLE.