

EQUIPMENT SCHEDULE

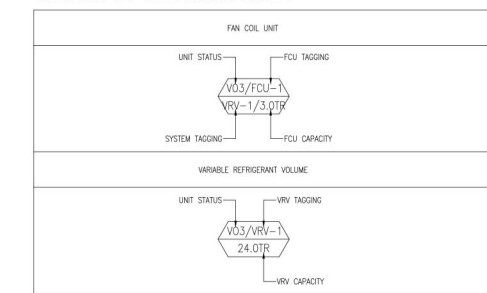
VO3 - FAN COIL UNIT (FCU) W/ MATCHING VARIABLE REFRIGERANT VOLUME (VRV)

STATUS/UNIT	VARIABLE REFRIGERANT VOLUME (VRV)											FAN COIL UNIT (FCU)											REMARKS					
	TOTAL COOLING CAP. (HP)/(TR)	LOCATION	AREA SERVED	MODEL PER CAPACITY	QTY.	COMBINATION PER COOLING CAP. (KW/HP) / (BTU/HR)	REFRIGERANT TYPE	PPING CONNECTIONS LIQUID (MM)	GAS (MM)	INPUT (KW)	VOLT	PHASE	HERTZ	EER	STATUS/UNIT	LOCATION	QTY.	TOTAL COOLING CAP. (KW/HP) / (BTU/HR)	MODEL TYPE	AIR FLOW RATE (CFM)	E.S.P. (Pa)	PPING CONNECTIONS LIQUID (MM)		GAS (MM)	INPUT (KW)	VOLT	PHASE	HERTZ
VO3/VRV-1	8.0/6.0	ROOF DECK	19TH FLOOR	DAIKIN RXQ8YAM	1	22.4(8.0) / 76,400(6.0)	R-410A	9.50ø	19.10ø	5.17	380	3	60	14.78	VO3/FCU-2	19TH FLOOR	2	7.1(2.5) / 24,200(2.0)	4-WAY CEILING CASSETTE FREE BLOW	750	-	9.50ø	15.90ø	0.063	220	1	60	DAIKIN FXFQ63AVM
VO3/VRV-2	18.0/15.0	ROOF DECK	19TH FLOOR	DAIKIN RXQ18AYM	1	50.0(18.0) / 171,000(14.5)	R-410A	15.90ø	28.60ø	15.30	380	3	60	11.18	VO3/FCU-2	19TH FLOOR	2	7.1(2.5) / 24,200(2.0)	4-WAY CEILING CASSETTE FREE BLOW	750	-	9.50ø	15.90ø	0.063	220	1	60	DAIKIN FXFQ63AVM
VO3/VRV-3	30.0/24.0	ROOF DECK	19TH FLOOR	DAIKIN RXQ18AYM	1	50.0(18.0) / 171,000(14.5)	R-410A	15.90ø	28.60ø	15.30	380	3	60	11.18	VO3/FCU-4	19TH FLOOR	1	11.2(4.0) / 38,200(3.0)	4-WAY CEILING CASSETTE FREE BLOW	1200	-	9.50ø	15.90ø	0.158	220	1	60	DAIKIN FXFQ100AVM
				DAIKIN RXQ12AYM	1	33.5(12.0) / 114,000(9.5)	R-410A	12.70ø	28.60ø	8.70	380	3	60	13.10	VO3/FCU-5	19TH FLOOR	2	14.0(5.0) / 47,800(4.0)	4-WAY CEILING CASSETTE FREE BLOW	1500	-	9.50ø	15.90ø	0.178	220	1	60	DAIKIN FXFQ125AVM
VO3/VRV-4	8.0/6.0	ROOF DECK	19TH FLOOR	DAIKIN RXQ8YAM	1	22.4(8.0) / 76,400(6.0)	R-410A	9.50ø	19.10ø	5.17	380	3	60	14.78	VO3/FCU-2	19TH FLOOR	1	7.1(2.5) / 24,200(2.0)	4-WAY CEILING CASSETTE FREE BLOW	750	-	9.50ø	15.90ø	0.063	220	1	60	DAIKIN FXFQ63AVM
VO3/VRV-5	16.0/13.0	ROOF DECK	19TH FLOOR	DAIKIN RXQ18AYM	1	45.0(16.0) / 154,000(13.0)	R-410A	12.70ø	28.60ø	12.90	380	3	60	11.94	VO3/FCU-4	19TH FLOOR	1	11.2(4.0) / 38,200(3.0)	4-WAY CEILING CASSETTE FREE BLOW	1200	-	9.50ø	15.90ø	0.158	220	1	60	DAIKIN FXFQ100AVM
				DAIKIN RXQ12AYM	1	33.5(12.0) / 114,000(9.5)	R-410A	12.70ø	28.60ø	8.70	380	3	60	13.10	VO3/FCU-5	19TH FLOOR	2	14.0(5.0) / 47,800(4.0)	4-WAY CEILING CASSETTE FREE BLOW	1500	-	9.50ø	15.90ø	0.178	220	1	60	DAIKIN FXFQ125AVM
VO3/VRV-6	30.0/24.5	ROOF DECK	19TH FLOOR	DAIKIN RXQ18AYM	1	50.0(18.0) / 171,000(14.5)	R-410A	15.90ø	28.60ø	15.30	380	3	60	11.18	VO3/FCU-2	19TH FLOOR	3	7.1(2.5) / 24,200(2.0)	4-WAY CEILING CASSETTE FREE BLOW	750	-	9.50ø	15.90ø	0.063	220	1	60	DAIKIN FXFQ63AVM
				DAIKIN RXQ12AYM	1	33.5(12.0) / 114,000(9.5)	R-410A	12.70ø	28.60ø	8.70	380	3	60	13.10	VO3/FCU-5	19TH FLOOR	4	14.0(5.0) / 47,800(4.0)	4-WAY CEILING CASSETTE FREE BLOW	1500	-	9.50ø	15.90ø	0.178	220	1	60	DAIKIN FXFQ125AVM
														VO3/FCU-8	19TH FLOOR	1	5.6(2.0) / 19,100(1.5)	WALL MOUNTED FREE BLOW	600	-	6.40ø	12.70ø	0.033	220	1	60	DAIKIN FXAQ250PVE	

ADD - FAN COIL UNIT (FCU) W/ MATCHING VARIABLE REFRIGERANT VOLUME (VRV)

STATUS/UNIT	VARIABLE REFRIGERANT VOLUME (VRV)				FAN COIL UNIT (FCU)											REMARKS
	TOTAL COOLING CAP. (HP)/(TR)	LOCATION	AREA SERVED	QTY.	TOTAL COOLING CAP. (KW/HP) / (BTU/HR)	MODEL TYPE	AIR FLOW RATE (CFM)	E.S.P. (Pa)	PPING CONNECTIONS LIQUID (MM)	GAS (MM)	INPUT (KW)	VOLT	PHASE	HERTZ	BASS OF DESIGN (MODEL)	
VO3/VRV-J	12.0/9.6	ROOF DECK	18F HALLWAY	1	3.6(1.5) / 12,300(1.2)	2-WAY CEILING CASSETTE FREE BLOW	600	-	6.40ø	12.70ø	0.039	220	1	60	DAIKIN FXCQ32AVM	
ADD/VRV-K	24.0/19.6	ROOF DECK	17F HALLWAY	1	7.1(2.5) / 24,200(2.0)	WALL MOUNTED FREE BLOW	750	-	9.50ø	15.90ø	0.050	220	1	60	DAIKIN FXAQ63PVE	
			18F HALLWAY	2	4.5(1.5) / 15,400(1.2)	WALL MOUNTED FREE BLOW	450	-	6.40ø	12.70ø	0.020	220	1	60	DAIKIN FXAQ40PVE	
			19F HALLWAY	1	5.6(2.0) / 19,100(1.5)	WALL MOUNTED FREE BLOW	600	-	6.40ø	12.70ø	0.033	220	1	60	DAIKIN FXAQ250PVE	

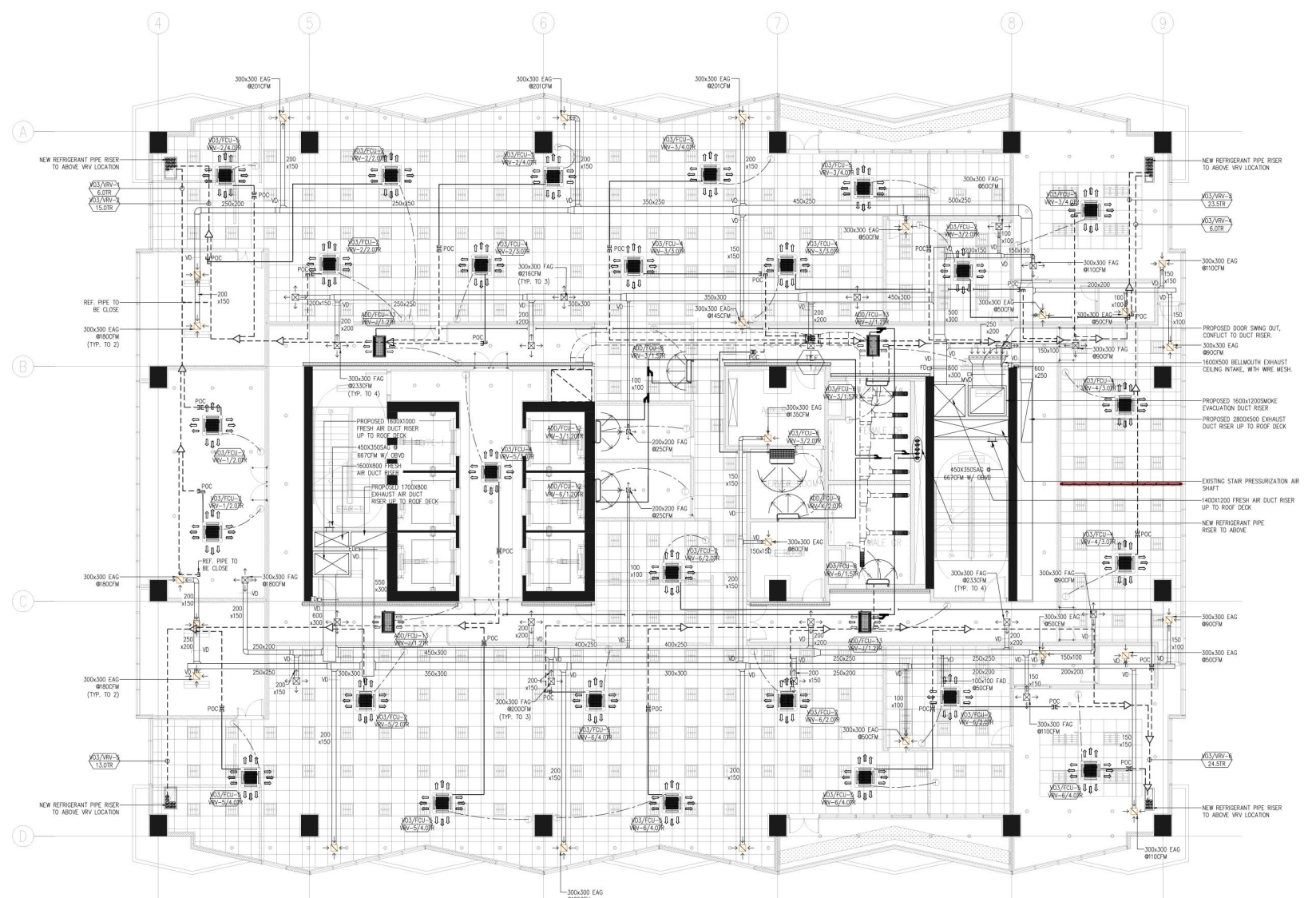
TAGGING DESCRIPTION:



LEGEND AND SYMBOLS/ABBREVIATION:

SYMBOLS	DESCRIPTION
	4-WAY CEILING CASSETTE TYPE FREEBLOW
	2-WAY CEILING CASSETTE TYPE FREEBLOW
	WALL MOUNTED TYPE FREEBLOW
	CEILING SUSPENDED TYPE FREEBLOW
	NEW REFRIGERANT PIPE
	NEW REFRIGERANT PIPE RISER
	NEW REFNET JOINT
	EXISTING REFRIGERANT PIPE
	EXISTING REFNET JOINT
	THERMOSTAT
	EXISTING EXHAUST AIR FAN
	EXISTING EXHAUST AIR DUCT
	EXISTING EXHAUST AIR GRILLE
	EXISTING FLEXIBLE EXHAUST AIR DUCT
	NEW FRESH AIR DUCT RISER
	NEW EXHAUST AIR DUCT RISER
	MOTORIZED VOLUME DAMPER
	VOLUME DAMPER
	NEW FRESH AND EXHAUST AIR DUCT
	NEW EXHAUST AIR GRILLE
	NEW FRESH AIR GRILLE
	NEW SMOKE CEILING EXHAUST AIR GRILLE

ABBREVIATION	DESCRIPTION
SQ.M	SQUARE METER
CFM	CUBIC FEET PER METER
MM	MILLIMETER
KW	KILOWATT
KG	KILOGRAM
DIA. (ø)	DIAMETER
QTY.	QUANTITY
TSP	TOTAL STATIC PRESSURE
Pa	PASCAL
V/PH/Hz	VOLTS/PHASE/HERTZ
FCU	FAN COIL UNIT
EAG	EXHAUST AIR GRILLE
FAG	FRESH AIR GRILLE
EAD	EXHAUST AIR DUCT
FAD	FRESH AIR DUCT
SAD	SUPPLY AIR DUCT
RAD	RETURN AIR DUCT
PAD	PRESSURIZATION AIR DUCT
SCD	SUPPLY CEILING DIFFUSER
LD	LOUVER DOOR



1 19TH FLOOR ACMV LAYOUT
M-21 SCALE 1:100 M.

NOTE:
THERMOSTAT LOCATION ON PLAN IS FOR REFERENCE ONLY, IT CAN BE RELOCATED BUT THE DISTANCE OF THERMOSTAT SHOULD BE MAXIMUM OF 3.0 - 4.0 METERS FROM THE FCU.

NOTE:
PURSUANT TO SECTION 4 OF ANNEX "A" OF THE REVISED IMPLEMENTING RULES AND REGULATIONS OF R.A. 9194, APPROVAL BY THE AUTHORIZED DPWH OFFICIALS OF DETAILED ENGINEERING SURVEYS AND DESIGN UNDERTAKEN BY CONSULTANTS NEITHER DIMINISHES THE RESPONSIBILITY OF THE LATTER FOR THE TECHNICAL INTEGRITY OF THE SURVEYS AND DESIGN NOR TRANSFER ANY PART OF THAT RESPONSIBILITY TO THE APPROVING OFFICIALS.
THE DESIGN CONSULTANT SHALL BE HELD RESPONSIBLE FOR THE FAILURE OF THE FACILITY/ES / STRUCTURES DUE TO FAULTY DESIGN EXCEPT FOR THE CHANGES MADE WITHOUT THE CONFORMITY OF THE CONSULTANTS.

DRAWINGS AND SPECIFICATIONS DULY SIGNED, STAMPED OR SEALED, AS INSTRUMENTS OF SERVICE, ARE PROPERTY AND DOCUMENTS OF THE ARCHITECT. WHETHER THE OBJECT FOR WHICH THEY ARE MADE IS EXECUTED OR NOT, IT SHALL BE UNLAWFUL FOR ANY PERSON, WITHOUT THE WRITTEN CONSENT OF THE ARCHITECT OR AUTHOR OF SAID DOCUMENTS, TO DUPLICATE OR TO MAKE COPIES OF SAID DOCUMENTS FOR USE IN THE REPRODUCTION OF AND FOR OTHER PROJECTS OR BUILDINGS, WHETHER EXECUTED PARTLY OR IN WHOLE.