

# EQUIPMENT SCHEDULE

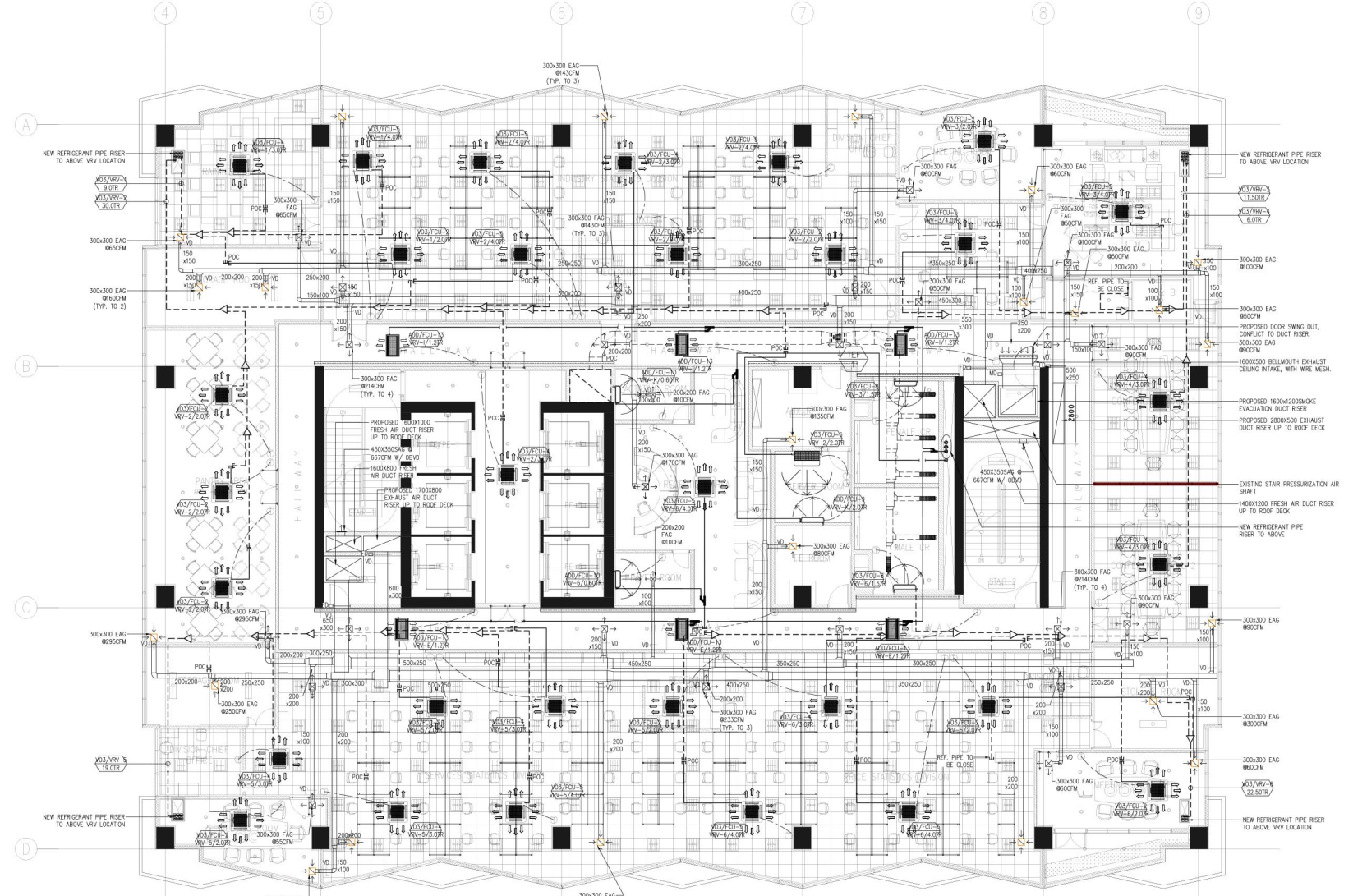
VO3-FAN COIL UNIT (FCU) W/ MATCHING VARIABLE REFRIGERANT VOLUME (VRV)

STATUS/UNIT	VARIABLE REFRIGERANT VOLUME (VRV)										FAN COIL UNIT (FCU)										REMARKS							
	TOTAL COOLING CAP. (HP)/(TR)	LOCATION	AREA SERVED	MODEL PER CAPACITY	QTY.	COMBINATION PER COOLING CAP. KW(HP) / BTU(H)	REFRIGERANT TYPE	PIPING CONNECTIONS LIQUID (MM)	GAS (MM)	INPUT (KW)	VOLT	PHASE	HERTZ	EER	STATUS/UNIT	LOCATION	QTY.	TOTAL COOLING CAP. KW(HP) / BTU(H)	MODEL TYPE	AIR FLOW RATE (CFM)		E.S.P. (Pa)	PIPING CONNECTIONS LIQUID (MM)	GAS (MM)	INPUT (KW)	VOLT	PHASE	HERTZ
VO3/VRV-1	12.0/9.50	ROOF DECK	17TH FLOOR	DAIKIN RXQ12AYM	1	33.5(12.0) / 114,000(9.50)	R-410A	12.70ø	28.60ø	8.70	380	3	60	13.10	VO3/FCU-4	17TH FLOOR	1	11.2(4.0) / 38,200(3.0)	4-WAY CEILING CASSETTE FREE BLOW	1200	-	9.50ø	15.90ø	0.15ø	220	1	60	DAIKIN FXFQ100AVM
														VO3/FCU-5	17TH FLOOR	1	14.0(5.0) / 47,800(4.0)	4-WAY CEILING CASSETTE FREE BLOW	1500	-	9.50ø	15.90ø	0.17ø	220	1	60	DAIKIN FXFQ125AVM	
														VO3/FCU-2	17TH FLOOR	1	7.1(2.5) / 24,200(2.0)	4-WAY CEILING CASSETTE FREE BLOW	750	-	9.50ø	15.90ø	0.06ø	220	1	60	DAIKIN FXFQ63AVM	
														VO3/FCU-4	17TH FLOOR	2	11.2(4.0) / 38,200(3.0)	4-WAY CEILING CASSETTE FREE BLOW	1200	-	9.50ø	15.90ø	0.15ø	220	1	60	DAIKIN FXFQ100AVM	
														VO3/FCU-2	17TH FLOOR	5	7.1(2.5) / 24,200(2.0)	4-WAY CEILING CASSETTE FREE BLOW	750	-	9.50ø	15.90ø	0.06ø	220	1	60	DAIKIN FXFQ63AVM	
														VO3/FCU-5	17TH FLOOR	3	14.0(5.0) / 47,800(4.0)	4-WAY CEILING CASSETTE FREE BLOW	1500	-	9.50ø	15.90ø	0.17ø	220	1	60	DAIKIN FXFQ125AVM	
														VO3/FCU-6	17TH FLOOR	1	7.1(2.5) / 24,200(2.0)	CEILING SUSPENDED FREE BLOW	750	-	9.50ø	15.90ø	0.14ø	220	1	60	DAIKIN FXH063MAYE	
														VO3/FCU-2	17TH FLOOR	2	14.0(5.0) / 47,800(4.0)	4-WAY CEILING CASSETTE FREE BLOW	1500	-	9.50ø	15.90ø	0.17ø	220	1	60	DAIKIN FXFQ125AVM	
														VO3/FCU-8	17TH FLOOR	1	5.6(2.0) / 19,100(1.5)	WALL MOUNTED FREE BLOW	600	-	6.40ø	12.70ø	0.03ø	220	1	60	DAIKIN FXA050PVE	
														VO3/FCU-4	17TH FLOOR	2	11.2(4.0) / 38,200(3.0)	4-WAY CEILING CASSETTE FREE BLOW	1200	-	9.50ø	15.90ø	0.15ø	220	1	60	DAIKIN FXFQ100AVM	
														VO3/FCU-2	17TH FLOOR	3	7.1(2.5) / 24,200(2.0)	4-WAY CEILING CASSETTE FREE BLOW	750	-	9.50ø	15.90ø	0.06ø	220	1	60	DAIKIN FXFQ63AVM	
														VO3/FCU-4	17TH FLOOR	3	11.2(4.0) / 38,200(3.0)	4-WAY CEILING CASSETTE FREE BLOW	1200	-	9.50ø	15.90ø	0.15ø	220	1	60	DAIKIN FXFQ100AVM	
														VO3/FCU-5	17TH FLOOR	1	14.0(5.0) / 47,800(4.0)	4-WAY CEILING CASSETTE FREE BLOW	1500	-	9.50ø	15.90ø	0.17ø	220	1	60	DAIKIN FXFQ125AVM	
														VO3/FCU-2	17TH FLOOR	2	7.1(2.5) / 24,200(2.0)	4-WAY CEILING CASSETTE FREE BLOW	750	-	9.50ø	15.90ø	0.06ø	220	1	60	DAIKIN FXFQ63AVM	
														VO3/FCU-4	17TH FLOOR	1	11.2(4.0) / 38,200(3.0)	4-WAY CEILING CASSETTE FREE BLOW	1200	-	9.50ø	15.90ø	0.15ø	220	1	60	DAIKIN FXFQ100AVM	
														VO3/FCU-5	17TH FLOOR	3	14.0(5.0) / 47,800(4.0)	4-WAY CEILING CASSETTE FREE BLOW	1500	-	9.50ø	15.90ø	0.17ø	220	1	60	DAIKIN FXFQ125AVM	
														VO3/FCU-8	17TH FLOOR	1	5.6(2.0) / 19,100(1.5)	WALL MOUNTED FREE BLOW	600	-	6.40ø	12.70ø	0.03ø	220	1	60	DAIKIN FXA050PVE	
														ADD/FCU-10	17TH FLOOR	1	2.2(0.75) / 7,500(0.60)	WALL MOUNTED FREE BLOW	225	-	6.40ø	12.70ø	0.01ø	220	1	60	DAIKIN FXA020PVE	

UNIT IS DAIKIN BRAND OR APPROVED EQUAL

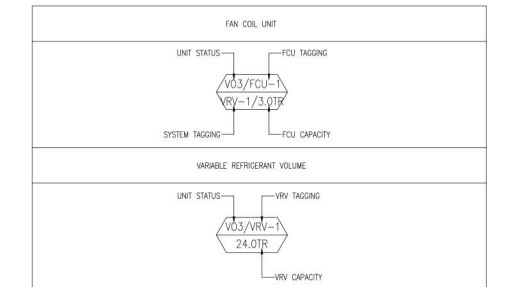
## ADD-FAN COIL UNIT (FCU) W/ MATCHING VARIABLE REFRIGERANT VOLUME (VRV)

STATUS/UNIT	VARIABLE REFRIGERANT VOLUME (VRV)					FAN COIL UNIT (FCU)										REMARKS	
	TOTAL COOLING CAP. (HP)/(TR)	LOCATION	AREA SERVED	STATUS/UNIT	LOCATION	QTY.	COMBINATION PER COOLING CAP. KW(HP) / BTU(H)	MODEL TYPE	AIR FLOW RATE (CFM)	E.S.P. (Pa)	PIPING CONNECTIONS LIQUID (MM)	GAS (MM)	INPUT (KW)	VOLT	PHASE		HERTZ
VO3/VRV-1	20.0/15.0	ROOF DECK	16F HALLWAY 17F HALLWAY	ADD/FCU-13	17F HALLWAY	6	3.6(1.5) / 12,300(1.20)	2-WAY CEILING CASSETTE FREE BLOW	600	-	6.40ø	12.70ø	0.03ø	220	1	60	DAIKIN FXC032AVM
ADD/VRV-K	24.0/19.6	ROOF DECK	17TH OFFICE 18TH OFFICE 19TH OFFICE	ADD/FCU-10	17TH FLOOR	1	2.2(0.75) / 7,500(0.60)	WALL MOUNTED FREE BLOW	225	-	6.40ø	12.70ø	0.01ø	220	1	60	DAIKIN FXA020PVE
				ADD/FCU-9	17TH FLOOR	1	7.1(2.5) / 24,200(2.0)	WALL MOUNTED FREE BLOW	750	-	9.50ø	15.90ø	0.05ø	220	1	60	DAIKIN FXA035PVE



1 17TH FLOOR ACMV LAYOUT  
M-19 SCALE 1:100 M.

## TAGGING DESCRIPTION:



## LEGEND AND SYMBOLS/ABBREVIATION:

SYMBOLS	DESCRIPTION
	4-WAY CEILING CASSETTE TYPE FREEBLOW
	2-WAY CEILING CASSETTE TYPE FREEBLOW
	WALL MOUNTED TYPE FREEBLOW
	CEILING SUSPENDED TYPE FREEBLOW
	NEW REFRIGERANT PIPE
	NEW REFRIGERANT PIPE RISER
	NEW REFNET JOINT
	EXISTING REFRIGERANT PIPE
	EXISTING REFNET JOINT
	THERMOSTAT
	EXISTING EXHAUST AIR FAN
	EXISTING EXHAUST AIR DUCT
	EXISTING EXHAUST AIR GRILLE
	EXISTING FLEXIBLE EXHAUST AIR DUCT
	NEW FRESH AIR DUCT RISER
	NEW EXHAUST AIR DUCT RISER
	MOTORIZED VOLUME DAMPER
	VOLUME DAMPER
	NEW FRESH AND EXHAUST AIR DUCT
	NEW EXHAUST AIR GRILLE
	NEW FRESH AIR GRILLE
	NEW SMOKE CEILING EXHAUST AIR GRILLE
	NEW SMOKE CEILING EXHAUST BELLMOUTH GRILLE
ABBREVIATION	DESCRIPTION
SQ.M	SQUARE METER
CFM	CUBIC FEET PER MINUTE
MM	MILLIMETER
KW	KILOWATT
KG	KILOGRAM
DIA. (ø)	DIAMETER
QTY.	QUANTITY
TSP	TOTAL STATIC PRESSURE
Pa	PASCAL
V/PH/Hz	VOLTS/PHASE/HERTZ
FCU	FAN COIL UNIT
EAG	EXHAUST AIR GRILLE
FAG	FRESH AIR GRILLE
EAD	EXHAUST AIR DUCT
FAD	FRESH AIR DUCT
SAD	SUPPLY AIR DUCT
RAD	RETURN AIR DUCT
PAD	PRESSURIZATION AIR DUCT
SCD	SUPPLY CEILING DIFFUSER
LD	LOUVER DOOR

NOTE:  
PURSUANT TO SECTION 4 OF ANNEX "A" OF THE REVISED IMPLEMENTING RULES AND REGULATIONS OF R.A. 9194, APPROVAL BY THE AUTHORIZED DPWH OFFICIALS OF DETAILED ENGINEERING SURVEYS AND DESIGN UNDERTAKEN BY CONSULTANTS NEITHER DIMINISHES THE RESPONSIBILITY OF THE LATTER FOR THE TECHNICAL INTEGRITY OF THE SURVEYS AND DESIGN NOR TRANSFER ANY PART OF THAT RESPONSIBILITY TO THE APPROVING OFFICIALS.  
THE DESIGN CONSULTANT SHALL BE HELD RESPONSIBLE FOR THE FAILURE OF THE FACILITY/ES / STRUCTURES DUE TO FAULTY DESIGN EXCEPT FOR THE CHANGES MADE WITHOUT THE CONFORMITY OF THE CONSULTANTS.

DRAWINGS AND SPECIFICATIONS DULY SIGNED, STAMPED OR SEALED, AS INSTRUMENTS OF SERVICE, ARE PROPERTY AND DOCUMENTS OF THE ARCHITECT, WHETHER THE OBJECT FOR WHICH THEY ARE MADE IS EXECUTED OR NOT. IT SHALL BE UNLAWFUL FOR ANY PERSON, WITHOUT THE WRITTEN CONSENT OF THE ARCHITECT OR AUTHOR OF SAID DOCUMENTS, TO DUPLICATE OR TO MAKE COPIES OF SAID DOCUMENTS FOR USE IN THE REPRODUCTION OF AND FOR OTHER PROJECTS OR BUILDINGS, WHETHER EXECUTED PARTLY OR IN WHOLE.

NOTE:  
THERMOSTAT LOCATION ON PLAN IS FOR REFERENCE ONLY. IT CAN BE RELOCATED BUT THE DISTANCE OF THERMOSTAT SHOULD BE MAXIMUM OF 3.0 - 4.0 METERS FROM THE FCU.