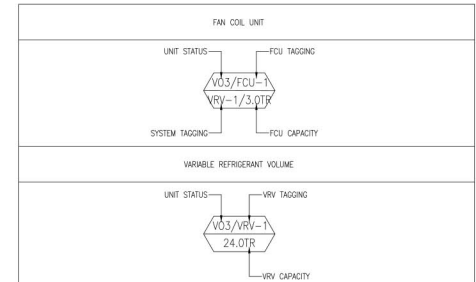


EQUIPMENT SCHEDULE
VO3-FAN COIL UNIT (FCU) W/ MATCHING VARIABLE REFRIGERANT VOLUME (VRV)

STATUS/UNIT	VARIABLE REFRIGERANT VOLUME (VRV)										FAN COIL UNIT (FCU)										REMARKS							
	TOTAL COOLING CAP. (HP)/(TR)	LOCATION	AREA SERVE	MODEL PER CAPACITY	QTY.	COMINATION PER COOLING CAP. KW(HP) / BTU(HR)	REFRIGERANT TYPE	PIPING CONNECTIONS LIQUID (MM)	GAS (MM)	INPUT (KW)	ELECTRICAL DATA VOLT	PHASE	HERTZ	EER	STATUS/UNIT	LOCATION	QTY.	TOTAL COOLING CAP. KW(HP) / BTU(HR)	MODEL TYPE	AIR FLOW RATE (CFM)		E.S.P. (Pa)	PIPING CONNECTIONS LIQUID (MM)	GAS (MM)	INPUT (KW)	ELECTRICAL DATA VOLT	PHASE	HERTZ
VO3/VRV-1	8.0/6.0	ROOF DECK	16TH FLOOR	DAIKIN RXQ8BYM	1	22.4(8.0) / 76,400(6.0)	R-410A	9.50W	19.10W	5.17	380	3	60	14.78	VO3/FCU-2	16TH FLOOR	1	7.1(2.5) / 24,200(2.0)	4-WAY CEILING CASSETTE FREE BLOW	750	-	9.50W	15.90W	0.063	220	1	60	DAIKIN FXFD63AVM
VO3/VRV-2	18.0/15.0	ROOF DECK	16TH FLOOR	DAIKIN RXQ18BYM	1	50.0(18.0) / 171,000(14.50)	R-410A	15.90W	28.60W	15.30	380	3	60	11.18	VO3/FCU-5	16TH FLOOR	1	14.0(5.0) / 47,800(4.0)	4-WAY CEILING CASSETTE FREE BLOW	1500	-	9.50W	15.90W	0.178	220	1	60	DAIKIN FXFD125AVM
VO3/VRV-3	28.0/22.50	ROOF DECK	16TH FLOOR	DAIKIN RXQ16AYM	1	45.0(16.0) / 154,000(13.0)	R-410A	12.70W	28.60W	12.90	380	3	60	11.94	VO3/FCU-4	16TH FLOOR	2	11.2(4.0) / 38,200(3.0)	4-WAY CEILING CASSETTE FREE BLOW	1200	-	9.50W	15.90W	0.158	220	1	60	DAIKIN FXFD100AVM
				DAIKIN RXQ12AYM	1	33.5(12.0) / 114,000(9.50)	R-410A	12.70W	28.60W	8.70	380	3	60	13.10	VO3/FCU-5	16TH FLOOR	3	14.0(5.0) / 47,800(4.0)	4-WAY CEILING CASSETTE FREE BLOW	1500	-	9.50W	15.90W	0.178	220	1	60	DAIKIN FXFD125AVM
VO3/VRV-4	8.0/6.0	ROOF DECK	16TH FLOOR	DAIKIN RXQ8BYM	1	22.4(8.0) / 76,400(6.0)	R-410A	9.50W	19.10W	5.17	380	3	60	14.78	VO3/FCU-6	16TH FLOOR	1	7.1(2.5) / 24,200(2.0)	CEILING SUSPENDED FREE BLOW	750	-	9.50W	15.90W	0.145	220	1	60	DAIKIN FXH063MAWE
VO3/VRV-5	8.0/6.0	ROOF DECK	16TH FLOOR	DAIKIN RXQ8BYM	1	22.4(8.0) / 76,400(6.0)	R-410A	9.50W	19.10W	5.17	380	3	60	14.78	VO3/FCU-8	16TH FLOOR	1	5.6(2.0) / 19,100(1.5)	WALL MOUNTED FREE BLOW	600	-	8.40W	12.70W	0.033	220	1	60	DAIKIN FXAQ20PVE
VO3/VRV-6	22.0/17.50	ROOF DECK	16TH FLOOR	DAIKIN RXQ12AYM	1	33.5(12.0) / 114,000(9.50)	R-410A	12.70W	28.60W	8.70	380	3	60	13.10	VO3/FCU-2	16TH FLOOR	2	7.1(2.5) / 24,200(2.0)	4-WAY CEILING CASSETTE FREE BLOW	750	-	9.50W	15.90W	0.063	220	1	60	DAIKIN FXFD63AVM
				DAIKIN RXQ10AYM	1	28.0(10.0) / 95,500(8.0)	R-410A	9.50W	22.20W	6.84	380	3	60	13.96	VO3/FCU-4	16TH FLOOR	2	11.2(4.0) / 38,200(3.0)	4-WAY CEILING CASSETTE FREE BLOW	1200	-	9.50W	15.90W	0.158	220	1	60	DAIKIN FXFD100AVM
VO3/VRV-7	26.0/21.0	ROOF DECK	16TH FLOOR	DAIKIN RXQ14AYM	1	40.0(14.0) / 136,000(11.50)	R-410A	12.70W	28.60W	10.70	380	3	60	12.71	VO3/FCU-5	16TH FLOOR	3	14.0(5.0) / 47,800(4.0)	4-WAY CEILING CASSETTE FREE BLOW	1500	-	9.50W	15.90W	0.178	220	1	60	DAIKIN FXFD125AVM
				DAIKIN RXQ12AYM	1	33.5(12.0) / 114,000(9.50)	R-410A	12.70W	28.60W	8.70	380	3	60	13.10	VO3/FCU-8	16TH FLOOR	1	5.6(2.0) / 19,100(1.5)	WALL MOUNTED FREE BLOW	600	-	8.40W	12.70W	0.033	220	1	60	DAIKIN FXAQ20PVE
														VO3/FCU-5	16TH FLOOR	2	14.0(5.0) / 47,800(4.0)	4-WAY CEILING CASSETTE FREE BLOW	1500	-	9.50W	15.90W	0.178	220	1	60	DAIKIN FXFD125AVM	

TAGGING DESCRIPTION:

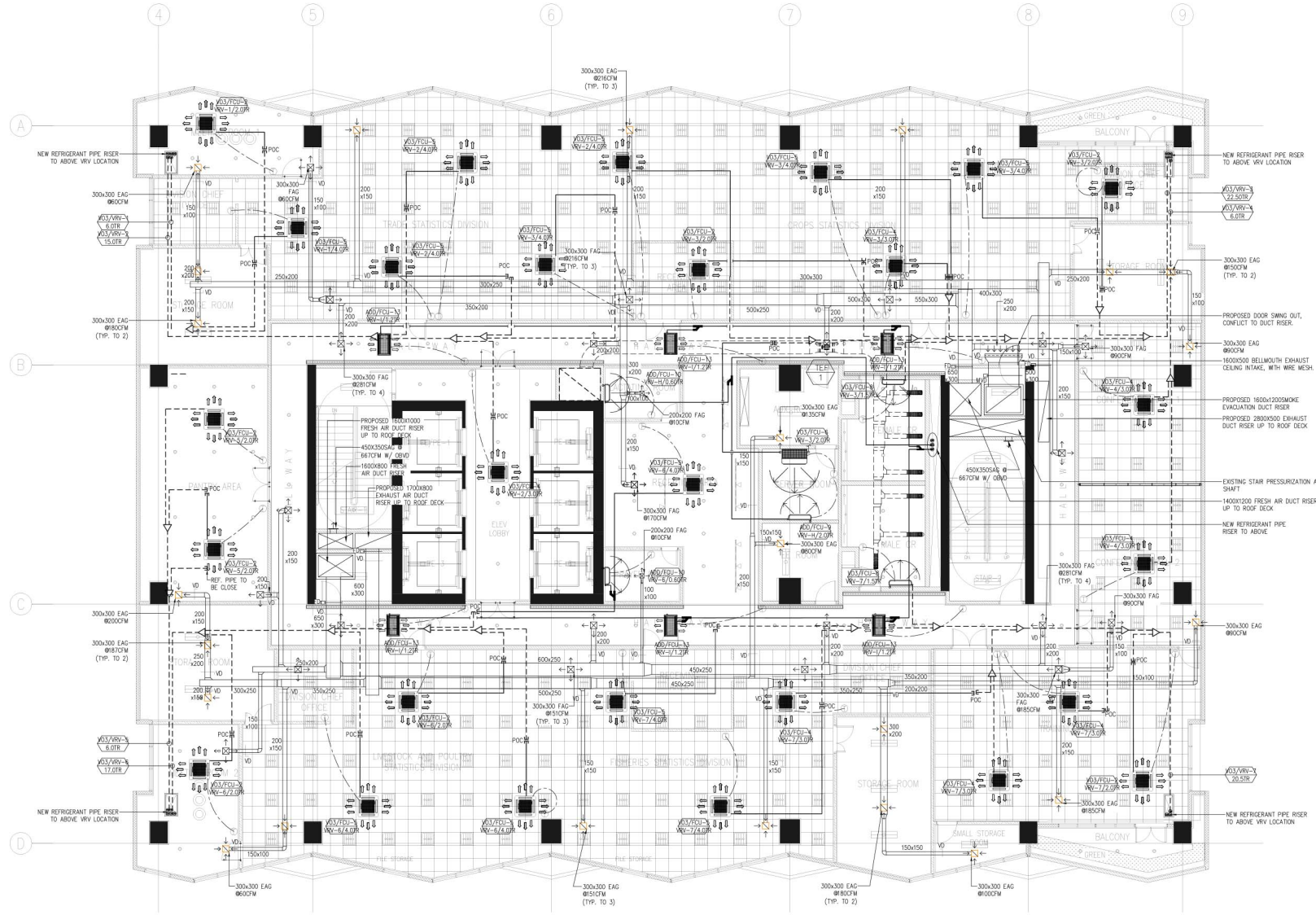


LEGEND AND SYMBOLS/ABBREVIATION:

SYMBOLS	DESCRIPTION
	4-WAY CEILING CASSETTE TYPE FREEBLOW
	2-WAY CEILING CASSETTE TYPE FREEBLOW
	WALL MOUNTED TYPE FREEBLOW
	CEILING SUSPENDED TYPE FREEBLOW
	NEW REFRIGERANT PIPE
	NEW REFRIGERANT PIPE RISER
	NEW REFNET JOINT
	EXISTING REFRIGERANT PIPE
	EXISTING REFNET JOINT
	THERMOSTAT
	EXISTING EXHAUST AIR FAN
	EXISTING EXHAUST AIR DUCT
	EXISTING EXHAUST AIR GRILLE
	EXISTING FLEXIBLE EXHAUST AIR DUCT
	NEW FRESH AIR DUCT RISER
	NEW EXHAUST AIR DUCT RISER
	MOTORIZED VOLUME DAMPER
	VOLUME DAMPER
	NEW FRESH AND EXHAUST AIR DUCT
	NEW EXHAUST AIR GRILLE
	NEW FRESH AIR GRILLE
	NEW SMOKE CEILING EXHAUST AIR GRILLE
	NEW SMOKE CEILING EXHAUST BELLMOUTH GRILLE

ADD-FAN COIL UNIT (FCU) W/ MATCHING VARIABLE REFRIGERANT VOLUME (VRV)

STATUS/UNIT	VARIABLE REFRIGERANT VOLUME (VRV)										FAN COIL UNIT (FCU)										REMARKS								
	TOTAL COOLING CAP. (HP)/(TR)	LOCATION	AREA SERVE	MODEL PER CAPACITY	QTY.	COMINATION PER COOLING CAP. KW(HP) / BTU(HR)	REFRIGERANT TYPE	PIPING CONNECTIONS LIQUID (MM)	GAS (MM)	INPUT (KW)	ELECTRICAL DATA VOLT	PHASE	HERTZ	EER	STATUS/UNIT	LOCATION	QTY.	TOTAL COOLING CAP. KW(HP) / BTU(HR)	MODEL TYPE	AIR FLOW RATE (CFM)		E.S.P. (Pa)	PIPING CONNECTIONS LIQUID (MM)	GAS (MM)	INPUT (KW)	ELECTRICAL DATA VOLT	PHASE	HERTZ	BASES OF DESIGN (MODEL)
VO3/VRV-1	20.0/15.0	ROOF DECK	16F HALLWAY	DAIKIN RXQ20AYM	1	56.0(20.0) / 191,000(16.0)	R-410A	15.90W	28.60W	17.70	380	3	60	10.79	ADD/FCU-13	16F HALLWAY	6	31.6(1.5) / 12,300(1.20)	2-WAY CEILING CASSETTE FREE BLOW	600	-	6.40W	12.70W	0.039	220	1	60	DAIKIN FXQ033AVM	UNIT IS DAIKIN BRAND OR APPROVED EQUAL
ADD/VRV-H	24.0/18.5	ROOF DECK	16F HALLWAY	SEE DETAIL @ 14TH FLOOR EQUIPMENT SCHED.										ADD/FCU-9	16TH FLOOR	1	7.1(2.5) / 24,200(2.0)	WALL MOUNTED FREE BLOW	750	-	9.50W	15.90W	0.050	220	1	60	DAIKIN FXAQ63PVE		
															ADD/FCU-10	16TH FLOOR	1	2.2(0.75) / 7,500(0.60)	WALL MOUNTED FREE BLOW	225	-	8.40W	12.70W	0.019	220	1	60	DAIKIN FXAQ20PVE	



16TH FLOOR ACMV LAYOUT
SCALE: 1:200 M.

NOTE:
PURSUANT TO SECTION 4 OF ANNEX "A" OF THE REVISED IMPLEMENTING RULES AND REGULATIONS OF R.A. 9164, APPROVAL BY THE AUTHORIZED DPWH OFFICIALS OF DETAILED ENGINEERING SURVEYS AND DESIGN UNDERTAKEN BY CONSULTANTS NEITHER DIMINISHES THE RESPONSIBILITY OF THE LATTER FOR THE TECHNICAL INTEGRITY OF THE SURVEYS AND DESIGN NOR TRANSFER ANY PART OF THAT RESPONSIBILITY TO THE APPROVING OFFICIALS.
THE DESIGN CONSULTANT SHALL BE HELD RESPONSIBLE FOR THE FAILURE OF THE FACILITY/ES / STRUCTURES DUE TO FAULTY DESIGN EXCEPT FOR THE CHANGES MADE WITHOUT THE CONFORMITY OF THE CONSULTANTS.

NOTE:
THERMOSTAT LOCATION ON PLAN IS FOR REFERENCE ONLY, IT CAN BE RELOCATED BUT THE DISTANCE OF THERMOSTAT SHOULD BE MAXIMUM OF 3.0 - 4.0 METERS FROM THE FCU.