

EQUIPMENT SCHEDULE

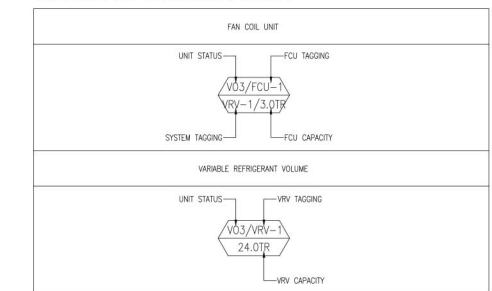
V03 - FAN COIL UNIT (FCU) W/ MATCHING VARIABLE REFRIGERANT VOLUME (VRV)

STATUS/UNIT	VARIABLE REFRIGERANT VOLUME (VRV)										FAN COIL UNIT (FCU)										REMARKS		
	TOTAL COOLING CAP. (HP)/(TR)	LOCATION	AREA SERVED	MODEL PER CAPACITY	QTY.	COMBINATION PER COOLING CAP. (KW/HP) / (BTU/HR)	REFRIGERANT TYPE	PIPING CONNECTIONS LIQUID (MM) GAS (MM)	INPUT (KW)	ELECTRICAL DATA VOLT PHASE HERTZ	EER	STATUS/UNIT	LOCATION	QTY.	TOTAL COOLING CAP. (KW/HP) / (BTU/HR)	MODEL TYPE	AIR FLOW RATE (CFM)	E.S.P. (Pa)	PIPING CONNECTIONS LIQUID (MM) GAS (MM)	INPUT (KW)		ELECTRICAL DATA VOLT PHASE HERTZ	BASIS OF DESIGN (MODEL)
V03/VRV-1	30.0/24.0	ROOF DECK	14TH FLOOR	DAIKIN RXQ12AYM	1	33.5(12.0) / 114,000(9.50)	R-410A	12.70x 28.60x	8.70	380 3	60	13.10	V03/FCU-4	14TH FLOOR	7	11.2(4.0) / 38,200(3.0)	4-WAY CEILING CASSETTE FREE BLOW	1200	-	9.50x 15.90x	0.15x 220 1	60	DAIKIN FXFQ100AVM
				DAIKIN RXQ18AYM	1	50.0(18.0) / 171,000(14.50)	R-410A	15.90x 28.60x	15.30	380 3	60	11.18	V03/FCU-6	14TH FLOOR	1	7.1(2.5) / 24,200(2.0)	CEILING SUSPENDED FREE BLOW	750	-	9.50x 15.90x	0.14x 220 1	60	DAIKIN FXHQ33MAYE
V03/VRV-2	6.0/4.50	ROOF DECK	14TH FLOOR	DAIKIN RXQ6AYM	1	16.0(6.0) / 54,600(4.50)	R-410A	9.50x 19.10x	3.38	380 3	60	16.15	V03/FCU-2	14TH FLOOR	2	7.1(2.5) / 24,200(2.0)	4-WAY CEILING CASSETTE FREE BLOW	750	-	9.50x 15.90x	0.06x 220 1	60	DAIKIN FXHQ63AYM
V03/VRV-3	16.0/13.0	ROOF DECK	14TH FLOOR	DAIKIN RXQ16AYM	1	45.0(16.0) / 154,000(13.0)	R-410A	12.70x 28.60x	12.90	380 3	60	11.94	V03/FCU-4	14TH FLOOR	4	11.2(4.0) / 38,200(3.0)	4-WAY CEILING CASSETTE FREE BLOW	1200	-	9.50x 15.90x	0.15x 220 1	60	DAIKIN FXFQ100AVM
V03/VRV-4	20.0/16.0	ROOF DECK	14TH FLOOR	DAIKIN RXQ20AYM	1	56.0(20.0) / 191,000(16.0)	R-410A	15.90x 28.60x	17.70	380 3	60	10.79	V03/FCU-2	14TH FLOOR	2	7.1(2.5) / 24,200(2.0)	4-WAY CEILING CASSETTE FREE BLOW	750	-	9.50x 15.90x	0.06x 220 1	60	DAIKIN FXHQ63AYM
V03/VRV-5	26.0/19.5	ROOF DECK	14TH FLOOR	DAIKIN RXQ12AYM	1	33.5(12.0) / 114,000(9.50)	R-410A	12.70x 28.60x	8.70	380 3	60	13.10	V03/FCU-4	14TH FLOOR	4	11.2(4.0) / 38,200(3.0)	4-WAY CEILING CASSETTE FREE BLOW	1200	-	9.50x 15.90x	0.15x 220 1	60	DAIKIN FXFQ100AVM
				DAIKIN RXQ14AYM	1	40.0(14.0) / 136,000(11.50)	R-410A	12.70x 28.60x	10.70	380 3	60	12.71	V03/FCU-8	14TH FLOOR	1	5.6(2.0) / 19,100(1.5)	WALL MOUNTED FREE BLOW	600	-	6.40x 12.70x	0.03x 220 1	60	DAIKIN FXAQ50PVE

ADD - FAN COIL UNIT (FCU) W/ MATCHING VARIABLE REFRIGERANT VOLUME (VRV)

STATUS/UNIT	VARIABLE REFRIGERANT VOLUME (VRV)										FAN COIL UNIT (FCU)										REMARKS		
	TOTAL COOLING CAP. (HP)/(TR)	LOCATION	AREA SERVED	MODEL PER CAPACITY	QTY.	COMBINATION PER COOLING CAP. (KW/HP) / (BTU/HR)	REFRIGERANT TYPE	PIPING CONNECTIONS LIQUID (MM) GAS (MM)	INPUT (KW)	ELECTRICAL DATA VOLT PHASE HERTZ	EER	STATUS/UNIT	LOCATION	QTY.	TOTAL COOLING CAP. (KW/HP) / (BTU/HR)	MODEL TYPE	AIR FLOW RATE (CFM)	E.S.P. (Pa)	PIPING CONNECTIONS LIQUID (MM) GAS (MM)	INPUT (KW)		ELECTRICAL DATA VOLT PHASE HERTZ	BASIS OF DESIGN (MODEL)
V03/VRV-D	20.0/15.0	ROOF DECK	14F HALLWAY 15F HALLWAY	DAIKIN RXQ20AYM	1	56.0(20.0) / 191,000(16.0)	R-410A	15.90x 28.60x	17.70	380 3	60	10.79	ADD/FCU-13	14F HALLWAY	6	3.6(1.5) / 12,300(1.20)	2-WAY CEILING CASSETTE FREE BLOW	600	-	6.40x 12.70x	0.03x 220 1	60	DAIKIN FXQ332AYM
ADD/VRV-H	24.0/18.5	ROOF DECK	14F HALLWAY 15F HALLWAY 16F HALLWAY	DAIKIN RXQ12AYM	2	33.5(12.0) / 114,000(9.50)	R-410A	12.70x 28.60x	8.70	380 3	60	13.10	ADD/FCU-10	14F HALLWAY	2	2.2(0.75) / 7,500(0.60)	WALL MOUNTED FREE BLOW	225	-	6.40x 12.70x	0.01x 220 1	60	DAIKIN FXAQ20PVE
													V03/FCU-5	14F HALLWAY	1	14.0(5.0) / 47,800(4.0)	4-WAY CEILING CASSETTE FREE BLOW	1500	-	9.50x 15.90x	0.17x 220 1	60	DAIKIN FXFQ125AVM
													V03/FCU-4	14F HALLWAY	1	11.2(4.0) / 38,200(3.0)	4-WAY CEILING CASSETTE FREE BLOW	1200	-	9.50x 15.90x	0.15x 220 1	60	DAIKIN FXFQ100AVM
ADD/FCU-9	14F HALLWAY	1	7.1(2.5) / 24,200(2.0)	WALL MOUNTED FREE BLOW	750	-	9.50x 15.90x	0.05x 220 1	60	DAIKIN FXAQ63PVE													

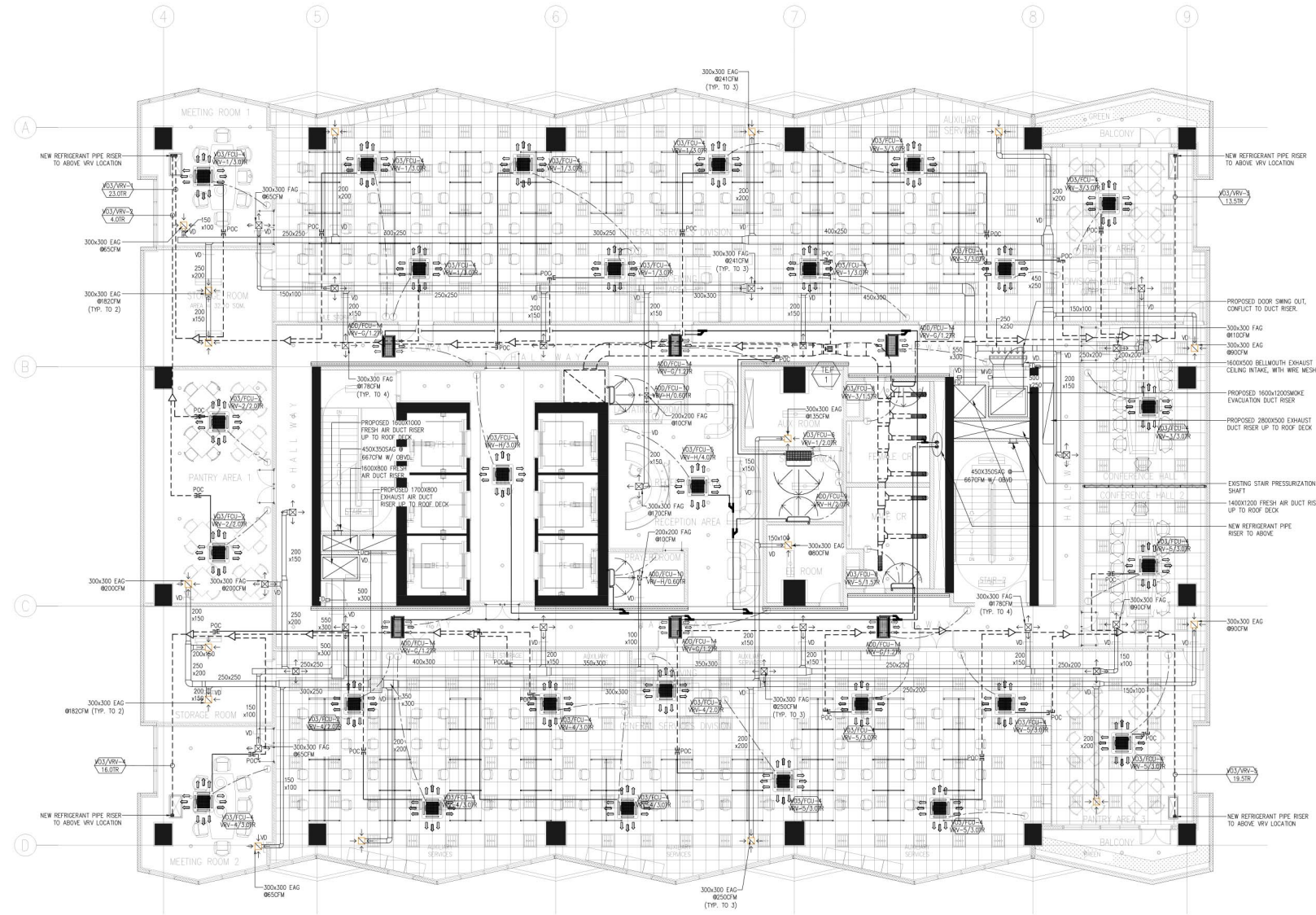
TAGGING DESCRIPTION:



LEGEND AND SYMBOLS/ABBREVIATION:

SYMBOLS	DESCRIPTION
[Symbol]	4-WAY CEILING CASSETTE TYPE FREEBLOW
[Symbol]	2-WAY CEILING CASSETTE TYPE FREEBLOW
[Symbol]	WALL MOUNTED TYPE FREEBLOW
[Symbol]	CEILING SUSPENDED TYPE FREEBLOW
[Symbol]	NEW REFRIGERANT PIPE
[Symbol]	NEW REFRIGERANT PIPE RISER
[Symbol]	NEW REFINET JOINT
[Symbol]	EXISTING REFRIGERANT PIPE
[Symbol]	EXISTING REFINET JOINT
[Symbol]	THERMOSTAT
[Symbol]	EXISTING EXHAUST AIR FAN
[Symbol]	EXISTING EXHAUST AIR DUCT
[Symbol]	EXISTING EXHAUST AIR GRILLE
[Symbol]	EXISTING FLEXIBLE EXHAUST AIR DUCT
[Symbol]	NEW FRESH AIR DUCT RISER
[Symbol]	NEW EXHAUST AIR DUCT RISER
[Symbol]	MOTORIZED VOLUME DAMPER
[Symbol]	VOLUME DAMPER
[Symbol]	NEW FRESH AND EXHAUST AIR DUCT
[Symbol]	NEW EXHAUST AIR GRILLE
[Symbol]	NEW FRESH AIR GRILLE
[Symbol]	NEW SMOKE CEILING EXHAUST AIR GRILLE
[Symbol]	NEW SMOKE CEILING EXHAUST BELLMOUTH GRILLE

ABBREVIATION	DESCRIPTION
SQ.M	SQUARE METER
CFM	CUBIC FEET PER METER
MM	MILLIMETER
KW	KILOWATT
KG	KILOGRAM
Ø	DIAMETER
QTY.	QUANTITY
TSP	TOTAL STATIC PRESSURE
Pa	PASCAL
V/PH/Hz	VOLTS/PHASE/HERTZ
FCU	FAN COIL UNIT
EAG	EXHAUST AIR GRILLE
FAG	FRESH AIR GRILLE
EAD	EXHAUST AIR DUCT
FAD	FRESH AIR DUCT
SAD	SUPPLY AIR DUCT
RAD	RETURN AIR DUCT
PAD	PRESSURIZATION AIR DUCT
SCD	SUPPLY CEILING DIFFUSER
LD	LOUVER DOOR



1 14TH FLOOR ACMV LAYOUT
M-16 SCALE 1:100 M.

NOTE:
PURSUANT TO SECTION 4 OF ANNEX "A" OF THE REVISED IMPLEMENTING RULES AND REGULATIONS OF R.A. 9194, APPROVAL BY THE AUTHORIZED DPWH OFFICIALS OF DETAILED ENGINEERING SURVEYS AND DESIGN UNDERTAKEN BY CONSULTANTS NEITHER DIMINISHES THE RESPONSIBILITY OF THE LATTER FOR THE TECHNICAL INTEGRITY OF THE SURVEYS AND DESIGN NOR TRANSFER ANY PART OF THAT RESPONSIBILITY TO THE APPROVING OFFICIALS.
THE DESIGN CONSULTANT SHALL BE HELD RESPONSIBLE FOR THE FAILURE OF THE FACILITY/IES / STRUCTURES DUE TO FAULTY DESIGN EXCEPT FOR THE CHANGES MADE WITHOUT THE CONFORMITY OF THE CONSULTANTS.

DRAWINGS AND SPECIFICATIONS DULY SIGNED, STAMPED OR SEALED, AS INSTRUMENTS OF SERVICE, ARE PROPERTY AND DOCUMENTS OF THE ARCHITECT, WHETHER THE OBJECT FOR WHICH THEY ARE MADE IS EXECUTED OR NOT. IT SHALL BE UNLAWFUL FOR ANY PERSON, WITHOUT THE WRITTEN CONSENT OF THE ARCHITECT OR AUTHOR OF SAID DOCUMENTS, TO DUPLICATE OR TO MAKE COPIES OF SAID DOCUMENTS FOR USE IN THE REPEITION OF AND FOR OTHER PROJECTS OR BUILDINGS, WHETHER EXECUTED PARTLY OR IN WHOLE.

NOTE:
THERMOSTAT LOCATION ON PLAN IS FOR REFERENCE ONLY, IT CAN BE RELOCATED BUT THE DISTANCE OF THERMOSTAT SHOULD BE MAXIMUM OF 3.0 - 4.0 METERS FROM THE FCU.