

EQUIPMENT SCHEDULE

V03 - FAN COIL UNIT (FCU) W/ MATCHING VARIABLE REFRIGERANT VOLUME (VRV)

STATUS/UNIT	TOTAL COOLING CAP (KW/RT)	LOCATION	MODEL	QTY.	VARIABLE REFRIGERANT VOLUME (VRV)							FAN COIL UNIT (FCU)										REMARKS					
					MODEL COOLING CAP (KW/RT)	REFRIGERANT TYPE	PIPE CONNECTIONS (LIQUID/REFL)	ELECTRICAL DATA (VOLT/PHASE/HERTZ)	STATUS/UNIT	LOCATION	QTY.	TOTAL COOLING CAP (KW/RT)	MODEL TYPE	AIR FLOW RATE (CFM)	ESP (Pa)	PIPE CONNECTIONS (LIQUID/REFL)	ELECTRICAL DATA (VOLT/PHASE/HERTZ)	BASE OF DESIGN (MODE)									
V03/VRV-1	22.0 / 17.0	6TH FLOOR	DAIKIN RFXQ10AM	1	28.0(10.0) / 95,500(8.0)	R-410A	9.50W	22.20P	6.84	380	3	60	13.96	V03/FCU-5	ICE DIVISION DCPHY DIVISION	3	14.0(5.0) / 47,800(4.0)	4-WAY CEILING CASSETTE FREE BLOW	1500	-	9.50W	15.90P	0.178	220	1	60	DAIKIN FXFQ125AM
			DAIKIN RFXQ12AM	1	33.5(12.0) / 114,000(9.0)	R-410A	12.70W	28.60P	8.70	380	3	60	13.10	V03/FCU-4	AUXILIARY SERVICE	1	11.2(4.0) / 38,200(3.0)	4-WAY CEILING CASSETTE FREE BLOW	1200	-	9.50W	15.90P	0.158	220	1	60	DAIKIN FXFQ10AM

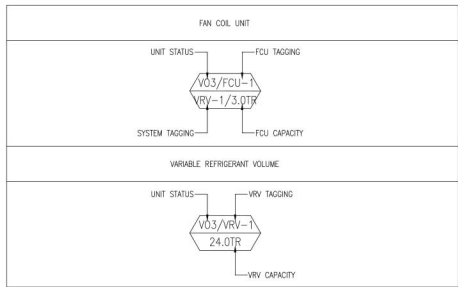
ADD-FAN COIL UNIT (FCU) W/ MATCHING VARIABLE REFRIGERANT VOLUME (VRV)

STATUS/UNIT	TOTAL COOLING CAP (KW/RT)	LOCATION	AREA SERVE	MODEL PER CAPACITY	QTY.	VARIABLE REFRIGERANT VOLUME (VRV)							FAN COIL UNIT (FCU)										REMARKS					
						MODEL COOLING CAP (KW/RT)	REFRIGERANT TYPE	PIPE CONNECTIONS (LIQUID/REFL)	ELECTRICAL DATA (VOLT/PHASE/HERTZ)	STATUS/UNIT	LOCATION	QTY.	TOTAL COOLING CAP (KW/RT)	MODEL TYPE	AIR FLOW RATE (CFM)	ESP (Pa)	PIPE CONNECTIONS (LIQUID/REFL)	ELECTRICAL DATA (VOLT/PHASE/HERTZ)	BASE OF DESIGN (MODE)									
V03/VRV-E	20.0 / 15.0	6TH FLOOR	11F HALLWAY 12F HALLWAY	DAIKIN RFXQ20AM	1	56.0(20.0) / 191,000(16.0)	R-410A	15.90W	28.60P	17.70	380	3	60	10.79	ADD/FCU-13	11F HALLWAY	4	3.6(1.5) / 12,300(1.20)	2-WAY CEILING CASSETTE FREE BLOW	600	-	6.40W	12.70P	0.039	220	1	60	DAIKIN FXQ32AM
V03/VRV-F	16.0 / 12.8	6TH FLOOR	11F OFFICE 12F OFFICE	DAIKIN RFXQ16AM	1	45.0(16.0) / 154,000(13.0)	R-410A	12.70W	28.60P	12.90	380	3	60	11.94	ADD/FCU-12	PRINTER ROOM, LACTATING ROOM, MEETING ROOM, ISS ANS STAFF	5	4.5(1.5) / 15,400(1.20)	WALL MOUNTED TYPE FREE BLOW	450	-	6.40W	12.70P	0.020	220	1	60	DAIKIN FXAQ30PVE
															ADD/FCU-9	SERVER ROOM	1	7.1(2.5) / 24,200(2.0)	WALL MOUNTED TYPE FREE BLOW	750	-	9.50W	15.90P	0.090	220	1	60	DAIKIN FXAQ30PVE

VENTILATING FANS

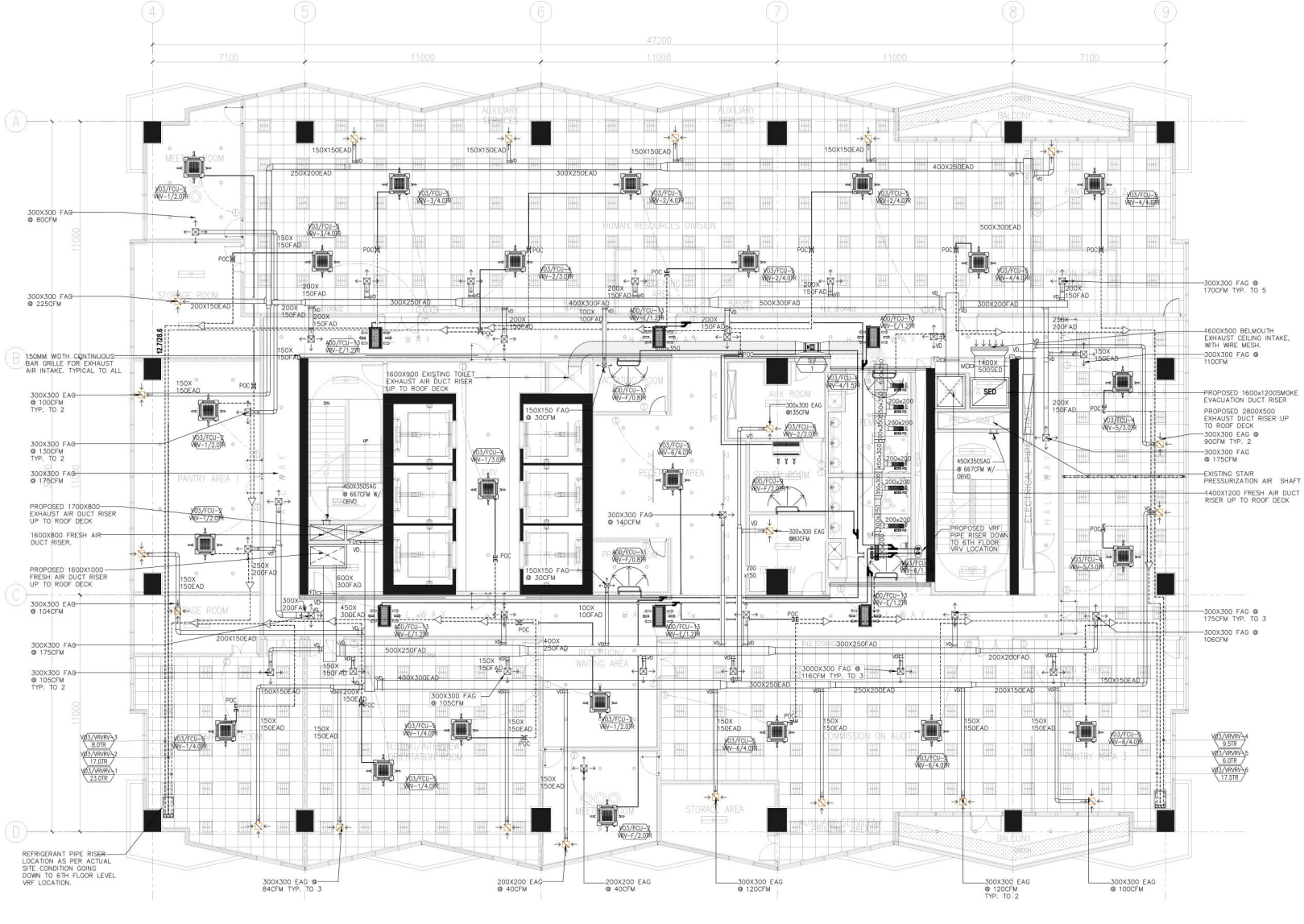
UNIT DESIGNATION	AREA SERVED	QTY.	AIR FLOW (CFM)	TYPE	TOTAL STATIC PRESSURE (Pa)	OUTLET VELOCITY (M/S)	MOTOR/VAULT POWER INPUT (KW)	MOTOR TYPE	MOTOR EFFICIENCY (%)	ELECTRICAL DATA (VOLT/PHASE/HERTZ)	REMARKS
TEP-1	COMMON TOILET	1	2150	AXIAL FAN	30	-	0.08	DIRECT DRIVE	-	380 3 60	UNIT IS EXISTING UNDER PHASE 1 BREEZING DESIGN
TEP-A	OFFICE TOILET	4	50	CEILING CASSETTE	-	-	0.1	DIRECT DRIVE	-	220 1 60	UNIT IS BASE ON KID, BROWN BRND
CF-1	PANTRY	1	3 SPEED	CEILING FAN	65	-	0.15	DIRECT DRIVE	-	220 1 60	UNIT IS BASE ON KID, BROWN BRND

TAGGING DESCRIPTION:



LEGEND AND SYMBOLS/ABBREVIATION:

SYMBOLS	DESCRIPTION
(Symbol)	4-WAY CEILING CASSETTE TYPE FREEBLOW
(Symbol)	2-WAY CEILING CASSETTE TYPE FREEBLOW
(Symbol)	WALL MOUNTED TYPE FREEBLOW
(Symbol)	CEILING SUSPENDED TYPE FREEBLOW
(Symbol)	NEW REFRIGERANT PIPE
(Symbol)	NEW REFRIGERANT PIPE RISER
(Symbol)	NEW REFNET JOINT
(Symbol)	EXISTING REFRIGERANT PIPE
(Symbol)	EXISTING REFNET JOINT
(Symbol)	THERMOSTAT
(Symbol)	EXISTING EXHAUST AIR FAN
(Symbol)	EXISTING EXHAUST AIR DUCT
(Symbol)	EXISTING EXHAUST AIR GRILLE
(Symbol)	EXISTING FLEXIBLE EXHAUST AIR DUCT
(Symbol)	NEW FRESH AIR DUCT RISER
(Symbol)	NEW EXHAUST AIR DUCT RISER
(Symbol)	MOTORIZED VOLUME DAMPER
(Symbol)	VOLUME DAMPER
(Symbol)	NEW FRESH AND EXHAUST AIR DUCT
(Symbol)	NEW EXHAUST AIR GRILLE
(Symbol)	NEW FRESH AIR GRILLE
(Symbol)	NEW SMOKE CEILING EXHAUST AIR GRILLE
(Symbol)	NEW SMOKE CEILING EXHAUST BELLMOUTH GRILLE
ABBREVIATION	DESCRIPTION
SQ.M	SQUARE METER
CFM	CUBIC FEET PER METER
MM	MILLIMETER
KW	KILOWATT
KG	KILOGRAM
DIA. (φ)	DIAMETER
QTY.	QUANTITY
TSP	TOTAL STATIC PRESSURE
Pa	PASCAL
V/PH/Hz	VOLTS/PHASE/HERTZ
FCU	FAN COIL UNIT
EAG	EXHAUST AIR GRILLE
FAG	FRESH AIR GRILLE
EAD	EXHAUST AIR DUCT
FAD	FRESH AIR DUCT
SAD	SUPPLY AIR DUCT
RAD	RETURN AIR DUCT
PAD	PRESSURIZATION AIR DUCT
SCD	SUPPLY CEILING DIFFUSER
LD	LOUVER DOOR



1 PROPOSED 12TH FLOOR ACMV LAYOUT
SCALE 1:100 M.

NOTE: THERMOSTAT LOCATION ON PLAN IS FOR REFERENCE ONLY. IT CAN BE RELOCATED BUT THE DISTANCE OF THERMOSTAT SHOULD BE MAXIMUM OF 3.0 - 4.0 METERS FROM THE FCU.

NOTE: PURSUANT TO SECTION 4 OF ANNEX 'A' OF THE REVISED IMPLEMENTING RULES AND REGULATIONS OF R.A. 9194, APPROVAL BY THE AUTHORIZED DPWH OFFICIALS OF DETAILED ENGINEERING SURVEYS AND DESIGN UNDERTAKEN BY CONSULTANTS NEITHER DIMINISHES THE RESPONSIBILITY OF THE LATTER FOR THE TECHNICAL INTEGRITY OF THE SURVEYS AND DESIGN NOR TRANSFER ANY PART OF THAT RESPONSIBILITY TO THE APPROVING OFFICIALS.

THE DESIGN CONSULTANT SHALL BE HELD RESPONSIBLE FOR THE FAILURE OF THE FACILITY/IES / STRUCTURES DUE TO FAULTY DESIGN EXCEPT FOR THE CHANGES MADE WITHOUT THE CONFORMITY OF THE CONSULTANTS.

TOKWING
CONSTRUCTION CORPORATION
Lod. 35, Rodriguez Drive, Rodriguez Subdivision,
Davao, Quezon City
Tel No. (832) 861-8689 Email: tokwingcorp@yahoo.com

ENRIQUE O. OLANAN & ASSOCIATES
ARCHITECTS ENGINEERS CONSULTANTS
Suite 205, Zouaveville Square Condominium,
No.38 Zouaveville Ave. Loyola Heights Quezon City
Tel No. (832) 7917-5358 Email: enolansdesign@gmail.com

ENOR MELITON A. NAJUE
PROFESSIONAL MECHANICAL ENGINEER
REG. NO.: 4969
DATE: 06/25/2024
PLACE: QUEZON CITY
TR. NO.: 912-907-496

JOSE MANUEL AGUIBALDO
PROJECT MANAGER
BUILDING & SPECIAL PROJECTS MANAGEMENT CLUSTER
UNIFIED PROJECT MANAGEMENT OFFICE, DPWH

ATTY. JOHNSON V. DOMINIO
PROJECT DIRECTOR
BUILDING & SPECIAL PROJECTS MANAGEMENT CLUSTER
UNIFIED PROJECT MANAGEMENT OFFICE, DPWH

REYNOR R. IMPERIAL
PLANNING AND MANAGEMENT SERVICE
CO-HEAD, PSA-BOCM

SOCRATES L. RAMORES
ASSISTANT SECRETARY
ASSISTANT NATIONAL STATISTICIAN
FINANCE, HEAD, PSA-BOCM

LEO B. MALAGAR
DEPUTY NATIONAL STATISTICIAN
CIVIL REGISTRATION & GENERAL SUPPORT OFFICE

USEC. CLAIRE DENNIS S. MAPA, PH. D.
NATIONAL STATISTICIAN AND CIVIL REGISTRATION GENERAL
PHILIPPINE STATISTICS AUTHORITY

CONSTRUCTION OF FIT-OUT AND LANDSCAPE WORKS FOR THE TWENTY-THREE (23) STOREY PHILIPPINE STATISTICS AUTHORITY (PSA) OFFICE BUILDING WITH COVERED ROOF DECK
LOCATION: PSA COMPLEX, EAST AVENUE, DILMAN, QUEZON CITY

SHEET CONTENT
PROPOSED 12TH FLR. ACMV LAYOUT
EQUIPMENT SCHEDULE
LEGEND & SYMBOL
ABBREVIATION

DESIGNER: RTM
CAD: Jvo / r/m
CHECKED: RTM
DATE: FEB. 2022

REVISIONS
SYMBOL REVISIONS
REMARK DATE
M-15