

EQUIPMENT SCHEDULE

V03 - FAN COIL UNIT (FCU) W/ MATCHING VARIABLE REFRIGERANT VOLUME (VRV)

STATUS/UNIT	VARIABLE REFRIGERANT VOLUME (VRV)										FAN COIL UNIT (FCU)										REMARKS						
	TOTAL COOLING CAP. (RTS)	LOCATION	MODEL	QTY.	MODEL COOLING CAP. (RTS)	REFRIGERANT TYPE	LIQUID (MM)	GAS (MM)	INLET (MM)	OUTLET (MM)	PHASE	HERTZ	EEER	STATUS/UNIT	LOCATION	QTY.	TOTAL COOLING CAP. (RTS)	MODEL TYPE	AIR FLOW RATE (CFM)	E.S.P. (Pa)		PPM CONNECTIONS	ELECTRICAL DATA	PHASE	HERTZ	BASE OF DESIGN (MODE)	
V03/VRV-1	22.0 / 17.0	6TH FLOOR	DAIKIN RXG104VM	1	28.0(10.0) / 95,500(8.0)	R-410A	9.50W	22.20W	6.84	380	3	60	13.86	V03/FCU-5	CS DIVISION DCPH DIVISION	3	14.0(5.0) / 47,800(4.0)	4-WAY CEILING CASSETTE FREE BLOW	1500	-	9.50W	15.90W	0.178	220	1	60	DAIKIN FXFQ125AM
			DAIKIN RXG124VM	1	33.5(12.0) / 114,000(9.0)	R-410A	12.70W	28.60W	8.70	380	3	60	13.10	V03/FCU-4	AUXILIARY SERVICE	1	11.2(4.0) / 38,200(3.0)	4-WAY CEILING CASSETTE FREE BLOW	1200	-	9.50W	15.90W	0.158	220	1	60	DAIKIN FXFQ100AM
V03/VRV-2	8.0 / 6.0	6TH FLOOR	DAIKIN RXG084VM	1	22.4(8.0) / 76,400(6.0)	R-410A	9.50W	19.10W	5.17	380	3	60	14.78	V03/FCU-2	MEETING ROOM	1	7.1(2.5) / 24,200(2.0)	4-WAY CEILING CASSETTE FREE BLOW	750	-	9.50W	15.90W	0.063	220	1	60	DAIKIN FXFQ83AM
			DAIKIN RXG124VM	3	33.5(12.0) / 114,000(9.0)	R-410A	12.70W	28.60W	8.70	380	3	60	13.10	V03/FCU-2	RECEIVING AREA	3	7.1(2.5) / 24,200(2.0)	4-WAY CEILING CASSETTE FREE BLOW	750	-	9.50W	15.90W	0.063	220	1	60	DAIKIN FXFQ83AM
V03/VRV-3	22.0 / 18.0	6TH FLOOR	DAIKIN RXG104VM	1	28.0(10.0) / 95,500(8.0)	R-410A	9.50W	22.20W	6.84	380	3	60	13.86	V03/FCU-5	OFF. OF THE ANS FOR POLS, LOGS & SCS	3	14.0(5.0) / 47,800(4.0)	4-WAY CEILING CASSETTE FREE BLOW	1500	-	9.50W	15.90W	0.178	220	1	60	DAIKIN FXFQ125AM
			DAIKIN RXG124VM	1	33.5(12.0) / 114,000(9.0)	R-410A	12.70W	28.60W	8.70	380	3	60	13.10	V03/FCU-4	RECEPTION AREA	1	11.2(4.0) / 38,200(3.0)	4-WAY CEILING CASSETTE FREE BLOW	1200	-	9.50W	15.90W	0.158	220	1	60	DAIKIN FXFQ100AM
V03/VRV-4	10.0 / 8.0	6TH FLOOR	DAIKIN RXG104VM	1	28.0(10.0) / 95,500(8.0)	R-410A	9.50W	22.20W	6.84	380	3	60	13.86	V03/FCU-5	SERVER ROOM	1	7.1(2.5) / 24,200(2.0)	CEILING SUSPENDED FREE BLOW	750	-	9.50W	15.90W	0.145	220	1	60	DAIKIN FXH083MVE
			DAIKIN RXG124VM	2	33.5(12.0) / 114,000(9.0)	R-410A	12.70W	28.60W	8.70	380	3	60	13.10	V03/FCU-5	OFF. OF THE ANS FOR POLS, LOGS & SCS	2	14.0(5.0) / 47,800(4.0)	4-WAY CEILING CASSETTE FREE BLOW	1500	-	9.50W	15.90W	0.178	220	1	60	DAIKIN FXFQ125AM
V03/VRV-5	16.0 / 12.5	6TH FLOOR	DAIKIN RXG164VM	1	45.0(16.0) / 154,000(13.0)	R-410A	12.70W	28.60W	12.80	380	3	60	11.94	V03/FCU-4	CONFERENCE HALL	1	11.2(4.0) / 38,200(3.0)	4-WAY CEILING CASSETTE FREE BLOW	1200	-	9.50W	15.90W	0.158	220	1	60	DAIKIN FXFQ100AM
			DAIKIN RXG144VM	1	40.0(14.0) / 136,000(11.0)	R-410A	12.70W	28.60W	10.70	380	3	60	12.71	V03/FCU-4	F. TOILET	1	5.8(2.0) / 19,100(1.5)	WALL MOUNTED FREE BLOW	600	-	6.40W	12.70W	0.033	220	1	60	DAIKIN FXAG3PVE
V03/VRV-6	26.0 / 21.5	6TH FLOOR	DAIKIN RXG124VM	1	33.5(12.0) / 114,000(9.0)	R-410A	12.70W	28.60W	8.70	380	3	60	13.10	V03/FCU-5	CONFERENCE RM. 2	1	11.2(4.0) / 38,200(3.0)	4-WAY CEILING CASSETTE FREE BLOW	1200	-	9.50W	15.90W	0.158	220	1	60	DAIKIN FXFQ100AM
			DAIKIN RXG144VM	1	40.0(14.0) / 136,000(11.0)	R-410A	12.70W	28.60W	10.70	380	3	60	12.71	V03/FCU-8	M. TOILET	1	5.8(2.0) / 19,100(1.5)	WALL MOUNTED FREE BLOW	600	-	6.40W	12.70W	0.033	220	1	60	DAIKIN FXAG3PVE

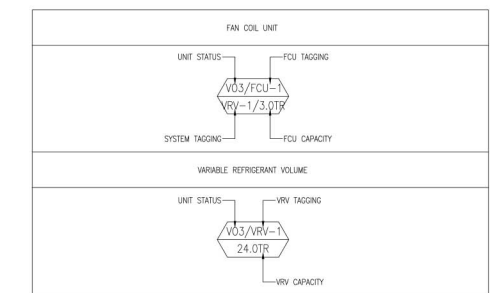
ADD - FAN COIL UNIT (FCU) W/ MATCHING VARIABLE REFRIGERANT VOLUME (VRV)

STATUS/UNIT	VARIABLE REFRIGERANT VOLUME (VRV)										FAN COIL UNIT (FCU)										REMARKS							
	TOTAL COOLING CAP. (RTS)	LOCATION	AREA SERVED	MODEL PER CAPACITY	QTY.	COMPARISON PER COOLING CAP. (RTS) / (RTS/HP)	REFRIGERANT TYPE	LIQUID (MM)	GAS (MM)	INLET (MM)	OUTLET (MM)	PHASE	HERTZ	EEER	STATUS/UNIT	LOCATION	QTY.	TOTAL COOLING CAP. (RTS)	MODEL TYPE	AIR FLOW RATE (CFM)		E.S.P. (Pa)	PPM CONNECTIONS	ELECTRICAL DATA	PHASE	HERTZ	BASE OF DESIGN (MODE)	
V03/VRV-E	20.0 / 15.0	6TH FLOOR	11F HALLWAY 12F HALLWAY	DAIKIN RXG204VM	1	56.0(20.0) / 191,000(16.0)	R-410A	15.90W	28.60W	17.70	380	3	60	10.79	ADD/FCU-13	11F HALLWAY	4	3.6(1.5) / 12,300(1.20)	2-WAY CEILING CASSETTE FREE BLOW	600	-	6.40W	12.70W	0.039	220	1	60	DAIKIN FXC32AM
V03/VRV-F	16.0 / 12.8	6TH FLOOR	11F OFFICE 12F OFFICE	DAIKIN RXG164VM	1	45.0(16.0) / 154,000(13.0)	R-410A	12.70W	28.60W	12.80	380	3	60	11.94	ADD/FCU-12	PRAYER ROOM, LACTATING ROOM, MEETING ROOM, SSS ANS STAFF	5	4.5(1.5) / 15,400(1.20)	WALL MOUNTED FREE BLOW	450	-	6.40W	12.70W	0.020	220	1	60	DAIKIN FXAG4PVE
															ADD/FCU-9	SERVER ROOM BRKUP	1	7.1(2.5) / 24,200(2.0)	WALL MOUNTED FREE BLOW	750	-	9.50W	15.90W	0.050	220	1	60	DAIKIN FXAG3PVE

VENTILATING FANS

UNIT DESIGNATION	AREA SERVED	QTY.	AIR FLOW (CFM)	TYPE	TOTAL STATIC PRESSURE (PSI)	OUTLET VELOCITY (FPS)	MOTOR/NAME PLATE INPUT (KW)	MOTOR TYPE	MOTOR EFFICIENCY (%)	VOLTS	PHASE	HERTZ	REMARKS
TEP-1	COMMON TOILET	1	2150	AXIAL FAN	30	-	0.08	DIRECT DRIVE	-	380	3	60	UNIT IS EXISTING UNDER PHASE 1 (BASIC BUILDING DESIGN)
TEP-A	OFFICE TOILET	4	50	CEILING CASSETTE	-	-	0.1	DIRECT DRIVE	-	220	1	60	UNIT IS BASE ON KOL BRQW BRND
CF-1	PANTRY	1	3 SPEED	CEILING FAN	65	-	0.15	DIRECT DRIVE	-	220	1	60	UNIT IS BASE ON KOL BRQW BRND

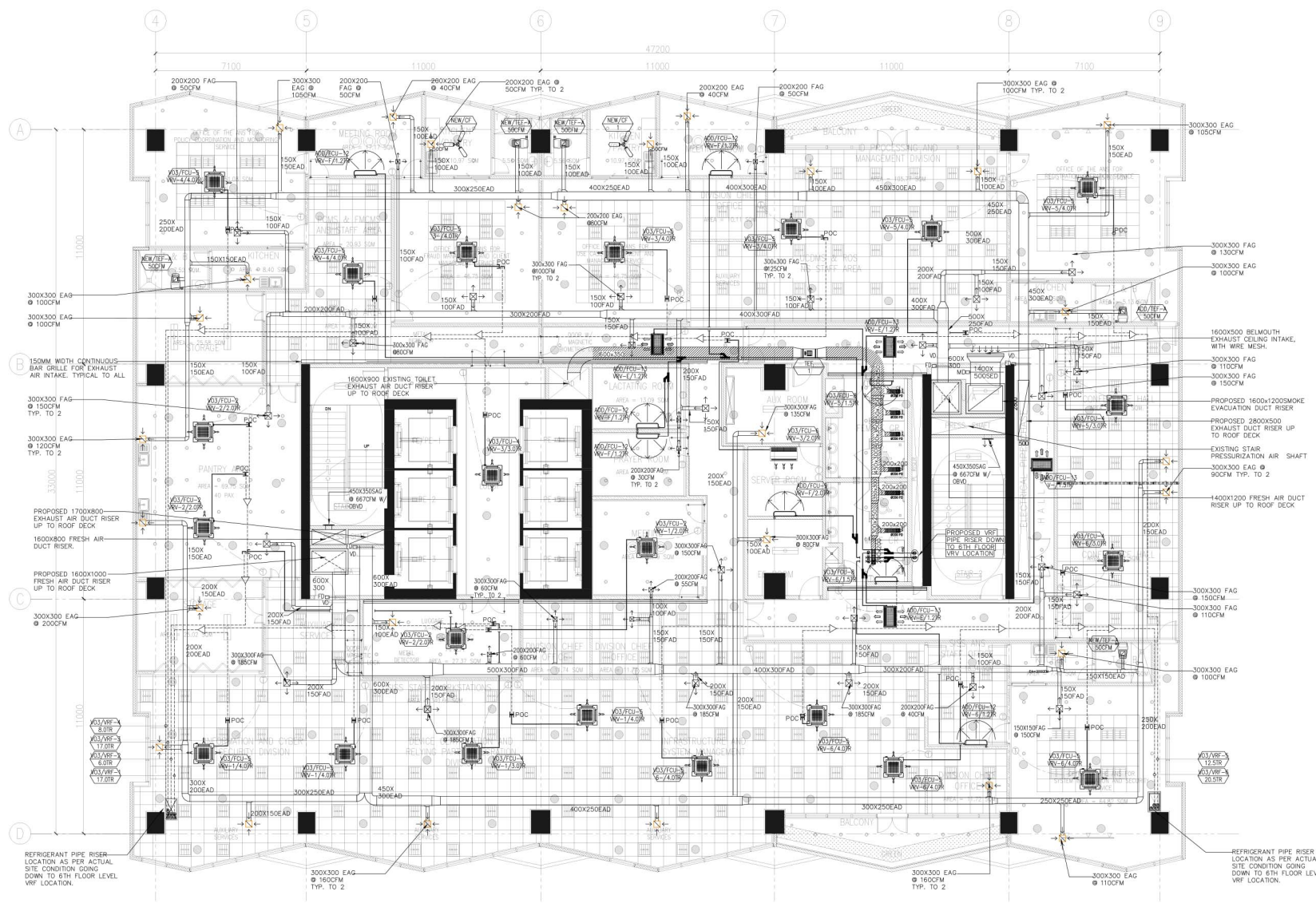
TAGGING DESCRIPTION:



LEGEND AND SYMBOLS/ABBREVIATION:

SYMBOLS	DESCRIPTION
[Symbol]	4-WAY CEILING CASSETTE TYPE FREEBLOW
[Symbol]	2-WAY CEILING CASSETTE TYPE FREEBLOW
[Symbol]	WALL MOUNTED TYPE FREEBLOW
[Symbol]	CEILING SUSPENDED TYPE FREEBLOW
[Symbol]	NEW REFRIGERANT PIPE
[Symbol]	NEW REFRIGERANT PIPE RISER
[Symbol]	NEW REFNET JOINT
[Symbol]	EXISTING REFRIGERANT PIPE
[Symbol]	EXISTING REFNET JOINT
[Symbol]	THERMOSTAT
[Symbol]	EXISTING EXHAUST AIR FAN
[Symbol]	EXISTING EXHAUST AIR DUCT
[Symbol]	EXISTING EXHAUST AIR GRILLE
[Symbol]	EXISTING FLEXIBLE EXHAUST AIR DUCT
[Symbol]	NEW FRESH AIR DUCT RISER
[Symbol]	NEW EXHAUST AIR DUCT RISER
[Symbol]	MOTORIZED VOLUME DAMPER
[Symbol]	VOLUME DAMPER
[Symbol]	NEW FRESH AND EXHAUST AIR DUCT
[Symbol]	NEW EXHAUST AIR GRILLE
[Symbol]	NEW FRESH AIR GRILLE
[Symbol]	NEW SMOKE CEILING EXHAUST AIR GRILLE
[Symbol]	NEW SMOKE CEILING EXHAUST BELLMOUTH GRILLE

ABBREVIATION	DESCRIPTION
SQ.M	SQUARE METER
CFM	CUBIC FEET PER MINUTE
MM	MILLIMETER
KW	KILOWATT
KG	KILOGRAM
DIA. (φ)	DIAMETER
QTY.	QUANTITY
TSP	TOTAL STATIC PRESSURE
Pa	PASCAL
V/PH/Hz	VOLTS/PHASE/HERTZ
FCU	FAN COIL UNIT
EAG	EXHAUST AIR GRILLE
FAG	FRESH AIR GRILLE
EAD	EXHAUST AIR DUCT
FAD	FRESH AIR DUCT
SAD	SUPPLY AIR DUCT
RAD	RETURN AIR DUCT
PAD	PRESSURIZATION AIR DUCT
SCD	SUPPLY CEILING DIFFUSER
LD	LOUVER DOOR



1 PROPOSED 11TH FLOOR ACMV LAYOUT
SCALE 1:100 M.

NOTE: THERMOSTAT LOCATION ON PLAN IS FOR REFERENCE ONLY. IT CAN BE RELOCATED BUT THE DISTANCE OF THERMOSTAT SHOULD BE MAXIMUM OF 3.0 - 4.0 METERS FROM THE FCU.

NOTE: PURSUANT TO SECTION 4 OF ANNEX "A" OF THE REVISED IMPLEMENTING RULES AND REGULATIONS OF R.A. 9194, APPROVAL BY THE AUTHORIZED DPWH OFFICIALS OF DETAILED ENGINEERING SURVEYS AND DESIGN UNDERTAKEN BY CONSULTANTS NEITHER DIMINISHES THE RESPONSIBILITY OF THE LATTER FOR THE TECHNICAL INTEGRITY OF THE SURVEYS AND DESIGN NOR TRANSFER ANY PART OF THAT RESPONSIBILITY TO THE APPROVING OFFICIALS.

THE DESIGN CONSULTANT SHALL BE HELD RESPONSIBLE FOR THE FAILURE OF THE FACILITY/ES / STRUCTURES DUE TO FAULTY DESIGN EXCEPT FOR THE CHANGES MADE WITHOUT THE CONFORMITY OF THE CONSULTANTS.

DRAWINGS AND SPECIFICATIONS DULY SIGNED, STAMPED OR SEALED, AS INSTRUMENTS OF SERVICE, ARE PROPERTY AND DOCUMENTS OF THE ARCHITECT. WHETHER THE OBJECT FOR WHICH THEY ARE MADE IS EXECUTED OR NOT, IT SHALL BE UNLAWFUL FOR ANY PERSON, WITHOUT THE WRITTEN CONSENT OF THE ARCHITECT OR AUTHOR OF SAID DOCUMENTS, TO DUPLICATE OR TO MAKE COPIES OF SAID DOCUMENTS FOR USE IN THE REPLICATION OF AND FOR OTHER PROJECTS OR BUILDINGS, WHETHER EXECUTED PARTLY OR IN WHOLE.