

EQUIPMENT SCHEDULE

VO3 - FAN COIL UNIT (FCU) W/ MATCHING VARIABLE REFRIGERANT VOLUME (VRV)

Table with columns for SIBS/UNIT, TOTAL COOLING CAP, LOCATION, MODEL, QTY, COEFFICIENT OF PERFORMANCE, REFERENCE, PIPING CONNECTIONS, ELECTRICAL DATA, SIBS/UNIT, LOCATION, QTY, TOTAL COOLING CAP, MODEL TYPE, AIR FLOW RATE, E.A.P., PIPING CONNECTIONS, ELECTRICAL DATA, BASE OF ROOM, and REMARKS. Lists various FCU units for locations like LIBRARY AREA, ELEVATOR LOBBY, MEDIA CENTER, SERVER ROOM, RECEIVING AREA, AS SHOW, PRESS CONFERENCE, VP HOLDING/LOUNGE, F. TOILET, RECEIVING AREA, STATISTIC LABORATORY MEETING ROOM, and M. TOILET.

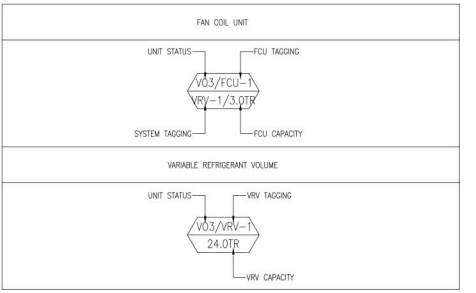
ADD - FAN COIL UNIT (FCU) W/ MATCHING VARIABLE REFRIGERANT VOLUME (VRV)

Table with columns for SIBS/UNIT, TOTAL COOLING CAP, LOCATION, AREA SIBS, MODEL PER CAPACITY, QTY, COEFFICIENT OF PERFORMANCE, REFERENCE, PIPING CONNECTIONS, ELECTRICAL DATA, SIBS/UNIT, LOCATION, QTY, TOTAL COOLING CAP, MODEL TYPE, AIR FLOW RATE, E.A.P., PIPING CONNECTIONS, ELECTRICAL DATA, BASE OF ROOM, and REMARKS. Lists additional FCU units for 9F-10F HALLWAY, WORKSHOP/REPAIR, GROUP STUDY/REPAIR DEPARTMENT HEAD, and SERVER ROOM BACKUP.

VENTILATING FANS - EXISTING UNIT

Table with columns for UNIT DESIGNATION, AREA SERIES, QTY, AIR FLOW (CFM), TYPE, TOTAL STATIC PRESSURE (INWG), OUTLET VELOCITY (FPS), MOTOR/FAV POWER INPUT (KW), MOTOR TYPE, MOTOR EFFICIENCY (%), ELECTRICAL CHARACTERISTICS (VOLTS, PHASE, HERTZ), and REMARKS. Lists existing units like COMMON TOILET and AXIAL FAN.

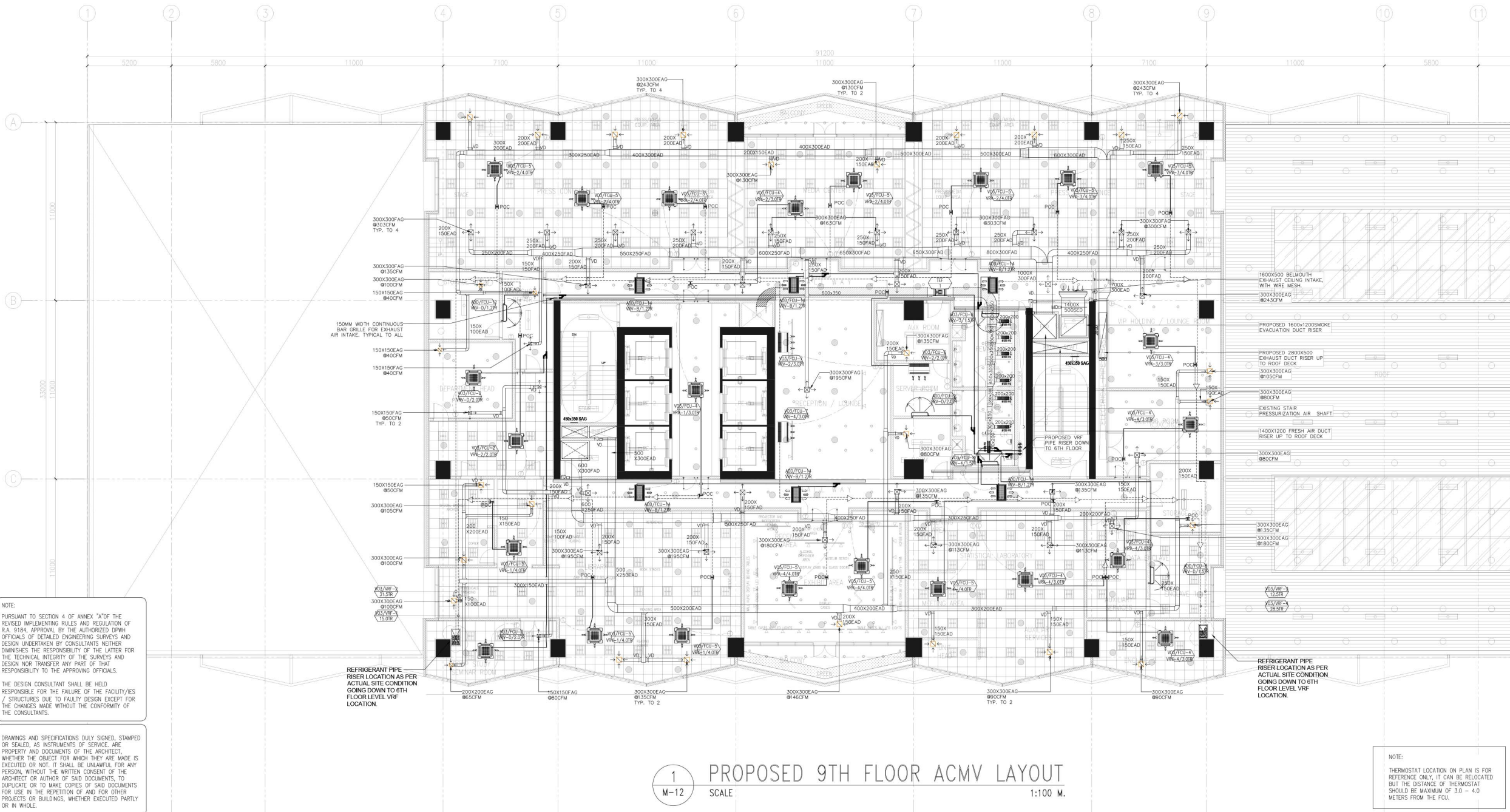
TAGGING DESCRIPTION:



LEGEND AND SYMBOLS/ABBREVIATION:

Legend table with columns for SYMBOLS and DESCRIPTION. Lists various HVAC symbols such as 4-WAY CEILING CASSETTE TYPE FREEBLOW, WALL MOUNTED TYPE FREEBLOW, CEILING SUSPENDED TYPE FREEBLOW, NEW REFRIGERANT PIPE, NEW REFRIGERANT PIPE RISER, NEW REFINET JOINT, EXISTING REFRIGERANT PIPE, EXISTING REFINET JOINT, THERMOSTAT, EXISTING EXHAUST AIR FAN, EXISTING EXHAUST AIR DUCT, EXISTING EXHAUST AIR GRILLE, EXISTING FLEXIBLE EXHAUST AIR DUCT, NEW FRESH AIR DUCT RISER, NEW EXHAUST AIR DUCT RISER, MOTORIZED VOLUME DAMPER, VOLUME DAMPER, NEW FRESH AND EXHAUST AIR DUCT, NEW EXHAUST AIR GRILLE, NEW FRESH AIR GRILLE, NEW SMOKE CEILING EXHAUST AIR GRILLE, and NEW SMOKE CEILING EXHAUST BELLMOUTH GRILLE.

Table with columns for ABBREVIATION and DESCRIPTION. Lists abbreviations for SQ.M, CFM, MM, KW, KG, DIA. (ø), QTY., TSP, Pa, V/PH/Hz, FCU, EAG, FAG, EAD, FAD, SAD, RAD, PAD, SCD, and LD with their corresponding descriptions.



NOTE: PURSUANT TO SECTION 4 OF ANNEX 'A' OF THE REVISED IMPLEMENTING RULES AND REGULATION OF RA 9194, APPROVAL BY THE AUTHORIZED DPWH OFFICIALS OF DETAILED ENGINEERING SURVEYS AND DESIGN UNDERTAKEN BY CONSULTANTS NEITHER DIMINISHES THE RESPONSIBILITY OF THE LATTER FOR THE TECHNICAL INTEGRITY OF THE SURVEYS AND DESIGN NOR TRANSFER ANY PART OF THAT RESPONSIBILITY TO THE APPROVING OFFICIALS.

THE DESIGN CONSULTANT SHALL BE HELD RESPONSIBLE FOR THE FAILURE OF THE FACILITY/ES / STRUCTURES DUE TO FAULTY DESIGN EXCEPT FOR THE CHANGES MADE WITHOUT THE CONFORMITY OF THE CONSULTANTS.

1 M-12 PROPOSED 9TH FLOOR ACMV LAYOUT SCALE 1:100 M.

NOTE: THERMOSTAT LOCATION ON PLAN IS FOR REFERENCE ONLY. IT CAN BE RELOCATED BUT THE DISTANCE OF THERMOSTAT SHOULD BE MAXIMUM OF 3.0 - 4.0 METERS FROM THE FCU.



CONSULTANT: ENRICA MELITON A. NAJUE PROFESSIONAL MECHANICAL ENGINEER PROJECT MANAGER

CHECKED: JOSE MANUEL AGUILARDO BUILDING & SPECIAL PROJECTS MANAGEMENT CLUSTER

REVIEWED: ATTY. JOHNSON V. DOMINIO BUILDING & SPECIAL PROJECTS MANAGEMENT CLUSTER

RECOMMENDING APPROVAL: REYNOR R. IMPERIAL PLANNING AND MANAGEMENT SERVICE

APPROVED: SOCRATES L. RAMONES ASSISTANT NATIONAL STATISTICIAN

PROJECT: CONSTRUCTION OF FIT-OUT AND LANDSCAPE WORKS FOR THE TWENTY-THREE (23) STOREY PHILIPPINE STATISTICS AUTHORITY (PSA) OFFICE BUILDING WITH COVERED ROOF DECK

DESIGNER: RTM JVA / F/M

CAD: JVA

CHECKED: RTM

DATE: FEB. 2022

REVISIONS: SYMBOL, REMARK, DATE