

EQUIPMENT SCHEDULE  
FAN COIL UNIT (FCU) W/ MATCHING VARIABLE REFRIGERANT VOLUME (VRV)

SYMBOL/UNIT	VARIABLE REFRIGERANT VOLUME (VRV)									FAN COIL UNIT (FCU)												
	TOTAL COOLING CAP (HP/RT)	LOCATION	MODEL	QTY	MODEL COOLING CAP (HP/RT)	REFRIGERANT TYPE	PIPE CONNECTIONS (COOLING/HEATING)	ELECTRICAL DATA (VOLT/PHASE/HERTZ)	WWT	STATUS/UNIT	LOCATION	QTY	TOTAL COOLING CAP (HP/RT)	WWT	PIPE CONNECTIONS (COOLING/HEATING)	ELECTRICAL DATA (VOLT/PHASE/HERTZ)	BASE OF DESIGN (MM/RS)	REMARKS				
VO3/VRV-1	16.0 / 13.0	6TH FLOOR	DANKIN FK0325M	1	45.0(16.0) / 34.000(13.0)	R-410A	12.70A / 25.60A	12.80 / 380 / 3	60	11.84	VO3/FCU-9	RECEPTION LOUNGE AREA, STANDARD RELEASE AREA	5	7.1(2.5) / 24.200(2.0)	WALL MOUNTED FREE BLOW	750	-	9.50A / 15.90A / 0.050	230 / 1	60	DANKIN FK0325M	
VO3/VRV-2	36.0 / 28.0	6TH FLOOR	DANKIN FK0325M	2	50.0(36.0) / 37.000(28.0)	R-410A	15.90A / 25.60A	15.30 / 380 / 3	60	11.16	VO3/FCU-4	EMPLOYEES' DRG RM-3	1	11.2(4.0) / 36.200(3.0)	4-WAY CEILING CASSETTE FREE BLOW	1200	-	9.50A / 15.90A / 0.158	230 / 1	60	DANKIN FK0325M	
VO3/VRV-3	8.0 / 6.0	6TH FLOOR	DANKIN FK0325M	1	22.0(8.0) / 16.000(6.0)	R-410A	8.50A / 19.10A	5.17 / 380 / 3	60	14.76	VO3/FCU-6	SERVER ROOM	1	7.1(2.5) / 24.200(2.0)	WALL MOUNTED FREE BLOW	750	-	9.50A / 15.90A / 0.050	230 / 1	60	DANKIN FK0325M	
VO3/VRV-4	12.0 / 9.5	6TH FLOOR	DANKIN FK0325M	1	35.0(12.0) / 24.000(9.5)	R-410A	12.70A / 25.60A	8.70 / 380 / 3	60	13.10	VO3/FCU-8	F. TOILET	1	5.6(2.0) / 16.100(1.5)	WALL MOUNTED FREE BLOW	600	-	6.40A / 12.70A / 0.033	230 / 1	60	DANKIN FK0325M	UNIT IS DARK BRAND OR APPROVED EQUAL
VO3/VRV-5	20.0 / 15.5	6TH FLOOR	DANKIN FK0325M	1	56.0(20.0) / 39.000(15.5)	R-410A	15.90A / 25.60A	17.70 / 380 / 3	60	10.74	VO3/FCU-9	STANDARD RM-40	7	7.1(2.5) / 24.200(2.0)	WALL MOUNTED FREE BLOW	750	-	9.50A / 15.90A / 0.050	230 / 1	60	DANKIN FK0325M	
											VO3/FCU-8	F. TOILET	1	5.6(2.0) / 16.100(1.5)	WALL MOUNTED FREE BLOW	600	-	6.40A / 12.70A / 0.033	230 / 1	60	DANKIN FK0325M	

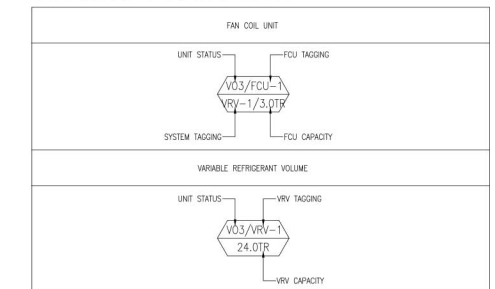
ADD - FAN COIL UNIT (FCU) W/ MATCHING VARIABLE REFRIGERANT VOLUME (VRV)

SYMBOL/UNIT	VARIABLE REFRIGERANT VOLUME (VRV)									FAN COIL UNIT (FCU)														
	TOTAL COOLING CAP (HP/RT)	LOCATION	AREA/TYPE	STATUS/UNIT	LOCATION	QTY	TOTAL COOLING CAP (HP/RT)	REFRIGERANT TYPE	PIPE CONNECTIONS (COOLING/HEATING)	ELECTRICAL DATA (VOLT/PHASE/HERTZ)	WWT	STATUS/UNIT	LOCATION	QTY	TOTAL COOLING CAP (HP/RT)	WWT	PIPE CONNECTIONS (COOLING/HEATING)	ELECTRICAL DATA (VOLT/PHASE/HERTZ)	BASE OF DESIGN (MM/RS)	REMARKS				
VO3/VRV-4	16.0 / 12.0	6TH FLOOR	7F HALLWAY	ADD/FCU-13	RF HALLWAY	8	3.6(1.0) / 12.300(1.0)	R-410A	12.70A / 25.60A	12.80 / 380 / 3	60	11.84	ADD/FCU-13	RF HALLWAY	8	3.6(1.0) / 12.300(1.0)	2-WAY CEILING CASSETTE FREE BLOW	800	-	6.40A / 12.70A / 0.033	230 / 1	60	DANKIN FK0325M	UNIT IS DARK BRAND OR APPROVED EQUAL
													ADD/FCU-10	RELEASE	1	2.2(0.75) / 7.500(0.6)	WALL MOUNTED FREE BLOW	225	-	6.40A / 12.70A / 0.019	230 / 1	60	DANKIN FK0325M	
													ADD/FCU-9	SERVER ROOM BACK-UP	1	7.1(2.5) / 24.200(2.0)	WALL MOUNTED FREE BLOW	750	-	9.50A / 15.90A / 0.050	230 / 1	60	DANKIN FK0325M	
													ADD/FCU-6	INVESTIGATION ROOM	1	5.6(2.0) / 16.100(1.5)	WALL MOUNTED FREE BLOW	600	-	6.40A / 12.70A / 0.033	230 / 1	60	DANKIN FK0325M	
													VO3/FCU-2	REPAIR ROOM	1	7.1(2.5) / 24.200(2.0)	4-WAY CEILING CASSETTE FREE BLOW	600	-	9.50A / 15.90A / 0.145	230 / 1	60	DANKIN FK0325M	

VENTILATING FANS - EXISTING UNIT

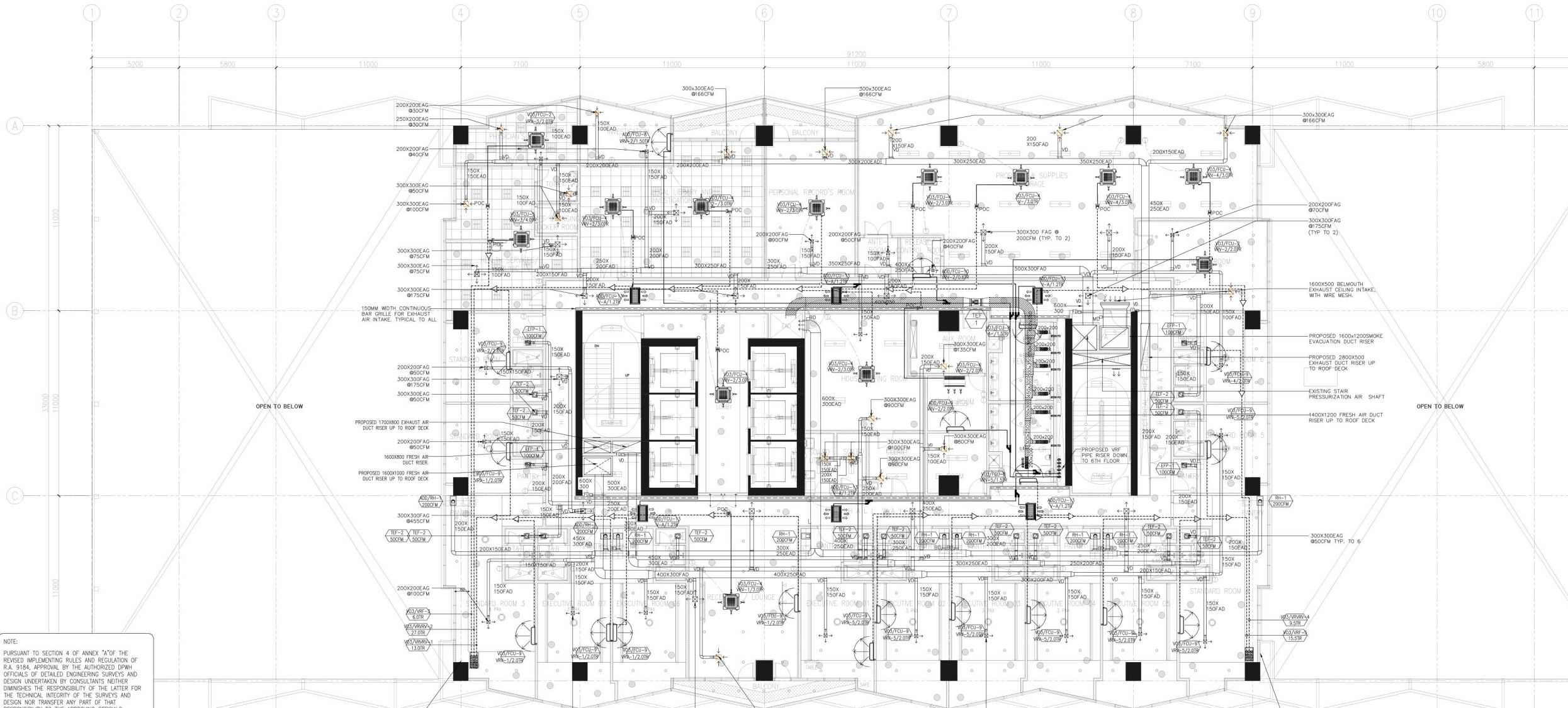
UNIT DESIGNATION	AREA SERVED	QTY	AIR FLOW (CFM)	TYPE	TOTAL STATIC PRESSURE (SP)	OUTLET VELOCITY (FPM)	MOTOR/DRIVE POWER INPUT (W)	MOTOR TYPE	MOTOR EFFICIENCY (%)	ELECTRICAL CHARACTERISTICS (V/PH/HERTZ)	REMARKS
ADD-RR-1	PANTRY	9	200	RANGE HOOD	85	-	0.20	DIRECT DRIVE	-	220 1 60	UNIT IS BASE ON LA-GEMERALD BRON & Z LINE BRAND
ADD-EPF-1	PANTRY	4	100	CEILING CASSETTE	65	-	0.10	DIRECT DRIVE	-	220 1 60	UNIT IS BASE ON KOK BRAND
TEF-1	COMMON TOILET	1	2100	AXIAL FAN	30	-	0.08	DIRECT DRIVE	-	380 3 60	UNIT IS EXISTING UNDER PHASE 1 BULK BUILDING DESIGN
TEF-2	ENGINEERING & STANDARD ROOM	13	50	CEILING CASSETTE	65	-	0.10	DIRECT DRIVE	-	220 1 60	UNIT IS BASE ON KOK BRAND

TAGGING DESCRIPTION:



LEGEND AND SYMBOLS/ABBREVIATION:

SYMBOLS	DESCRIPTION
	4-WAY CEILING CASSETTE TYPE FREEBLOW
	2-WAY CEILING CASSETTE TYPE FREEBLOW
	WALL MOUNTED TYPE FREEBLOW
	CEILING SUSPENDED TYPE FREEBLOW
	NEW REFRIGERANT PIPE
	NEW REFRIGERANT PIPE RISER
	NEW REFNET JOINT
	EXISTING REFRIGERANT PIPE
	EXISTING REFNET JOINT
	THERMOSTAT
	EXISTING EXHAUST AIR FAN
	EXISTING EXHAUST AIR DUCT
	EXISTING EXHAUST AIR GRILLE
	EXISTING FLEXIBLE EXHAUST AIR DUCT
	NEW FRESH AIR DUCT RISER
	NEW EXHAUST AIR DUCT RISER
	MOTORIZED VOLUME DAMPER
	VOLUME DAMPER
	NEW FRESH AND EXHAUST AIR DUCT
	NEW EXHAUST AIR GRILLE
	NEW FRESH AIR GRILLE
	NEW SMOKE CEILING EXHAUST AIR GRILLE
	NEW SMOKE CEILING EXHAUST BELLMOUTH GRILLE
ABBREVIATION	DESCRIPTION
sq.m	SQUARE METER
cfm	CUBIC FEET PER MINUTE
mm	MILLIMETER
kw	KILOWATT
kg	KILOGRAM
dia. (ø)	DIAMETER
qty.	QUANTITY
tsp	TOTAL STATIC PRESSURE
pa	PASCAL
v/PH/Hz	VOLTS/PHASE/HERTZ
FCU	FAN COIL UNIT
EAG	EXHAUST AIR GRILLE
FAG	FRESH AIR GRILLE
EAD	EXHAUST AIR DUCT
FAD	FRESH AIR DUCT
SAD	SUPPLY AIR DUCT
RAD	RETURN AIR DUCT
PAD	PRESSURIZATION AIR DUCT
SCD	SUPPLY CEILING DIFFUSER
LD	LOUVER DOOR



NOTE:  
PURSUANT TO SECTION 4 OF ANNEX "A" OF THE REVISED IMPLEMENTING RULES AND REGULATIONS OF R.A. 9194, APPROVAL BY THE AUTHORIZED DPWH OFFICIALS OF DETAILED ENGINEERING SURVEYS AND DESIGN UNDERTAKEN BY CONSULTANTS NEITHER DIMINISHES THE RESPONSIBILITY OF THE LATTER FOR THE TECHNICAL INTEGRITY OF THE SURVEYS AND DESIGN NOR TRANSFER ANY PART OF THAT RESPONSIBILITY TO THE APPROVING OFFICIALS.

THE DESIGN CONSULTANT SHALL BE HELD RESPONSIBLE FOR THE FAILURE OF THE FACILITY/IES / STRUCTURES DUE TO FAULTY DESIGN EXCEPT FOR THE CHANGES MADE WITHOUT THE CONFORMANCE OF THE CONSULTANTS.

DRAWINGS AND SPECIFICATIONS DULY SIGNED, STAMPED OR SEALED, AS INSTRUMENTS OF SERVICE, ARE PROPERTY AND DOCUMENTS OF THE ARCHITECT. WHATEVER THE OBJECT FOR WHICH THEY ARE MADE IS EXECUTED OR NOT, IT SHALL BE UNAVAILABLE FOR ANY PERSON, WITHOUT THE WRITTEN CONSENT OF THE ARCHITECT OR AUTHOR OF SAID DOCUMENTS, TO DUPLICATE OR TO MAKE COPIES OF SAID DOCUMENTS FOR USE IN THE REPLICATION OF AND FOR OTHER PROJECTS OR BUILDINGS, WHETHER EXECUTED PARTLY OR IN WHOLE.

NOTE:  
THERMOSTAT LOCATION ON PLAN IS FOR REFERENCE ONLY, IT CAN BE RELOCATED BUT THE DISTANCE OF THERMOSTAT SHOULD BE MAXIMUM OF 3.0 - 4.0 METERS FROM THE FCU.

1 M-11  
PROPOSED 8TH FLOOR ACMV LAYOUT  
SCALE 1:100 M.