

NOTE:
 PURSUANT TO SECTION 4 OF ANNEX "A" OF THE REVISED IMPLEMENTING RULES AND REGULATION OF R.A. 9164, APPROVAL BY THE AUTHORIZED DPWH OFFICIALS OF DETAILED ENGINEERING SURVEYS AND DESIGN UNDERTAKEN BY CONSULTANTS NEITHER DIMINISHES THE RESPONSIBILITY OF THE LATTER FOR THE TECHNICAL INTEGRITY OF THE SURVEYS AND DESIGN NOR TRANSFER ANY PART OF THAT RESPONSIBILITY TO THE APPROVING OFFICIALS.
 THE DESIGN CONSULTANT SHALL BE HELD RESPONSIBLE FOR THE FAILURE OF THE FACILITY/ES / STRUCTURES DUE TO FAULTY DESIGN EXCEPT FOR THE CHANGES MADE WITHOUT THE CONFORMITY OF THE CONSULTANTS.

DRAWINGS AND SPECIFICATIONS DULY SIGNED, STAMPED OR SEALED, AS INSTRUMENTS OF SERVICE, ARE PROPERTY AND DOCUMENTS OF THE ARCHITECT, WHETHER THE OBJECT FOR WHICH THEY ARE MADE IS EXECUTED OR NOT. IT SHALL BE UNLAWFUL FOR ANY PERSON, WITHOUT THE WRITTEN CONSENT OF THE ARCHITECT OR AUTHOR OF SAID DOCUMENTS, TO DUPLICATE OR TO MAKE COPIES OF SAID DOCUMENTS FOR USE IN THE REPEITION OF AND FOR OTHER PROJECTS OR BUILDINGS, WHETHER EXECUTED PARTLY OR IN WHOLE.



ENRIQUE O. OLANAN
 ARCHITECT
 PROJECT NO. 4643
 DATE: 04/29/2023
 SHEET NO. 200881
 DATE: 01/25/2022
 PROJECT: QUEZON CITY

JOSE MANUEL AGUIBALDO
 PROJECT MANAGER II
 BUILDING & SPECIAL PROJECTS MANAGEMENT CLUSTER
 UNP RP PROJECT MANAGEMENT OFFICE, UPNH

ATTY. JOHNSON V. DOMINCO
 PROJECT DIRECTOR
 BUILDING & SPECIAL PROJECTS MANAGEMENT CLUSTER
 UNP RP PROJECT MANAGEMENT OFFICE, UPNH

REYNOR R. IMPERIAL
 SUPERVISOR II
 PLANNING AND MANAGEMENT SERVICE
 UH-HEAD, PSA-BCDM

SOCRATES L. RAMONES
 SUPERVISOR IV
 ASSISTANT NATIONAL STATISTICIAN
 FRANCIS AND ANTONIETTA M. SANCHEZ
 PSAO, PSA-BCDM

LEO B. MALAGAR
 ASSISTANT SECRETARY
 DEPUTY NATIONAL STATISTICIAN
 CIVIL REGISTRATION & CENTRAL SUPPORT OFFICE
 PSAO, PSA-BCDM

USEG CLAUDE DENNIS S. MAPA, PH. D.
 NATIONAL STATISTICIAN AND CIVIL REGISTRATION GENERAL
 PHILIPPINE STATISTICS AUTHORITY

PROJECT:
 CONSTRUCTION OF FIT-OUT AND LANDSCAPE WORKS FOR THE TWENTY-THREE (23) STOREY PHILIPPINE STATISTICS AUTHORITY (PSA) OFFICE BUILDING WITH COVERED ROOF DECK
LOCATION: PSA COMPLEX, EAST AVENUE, DILIMAN, QUEZON CITY

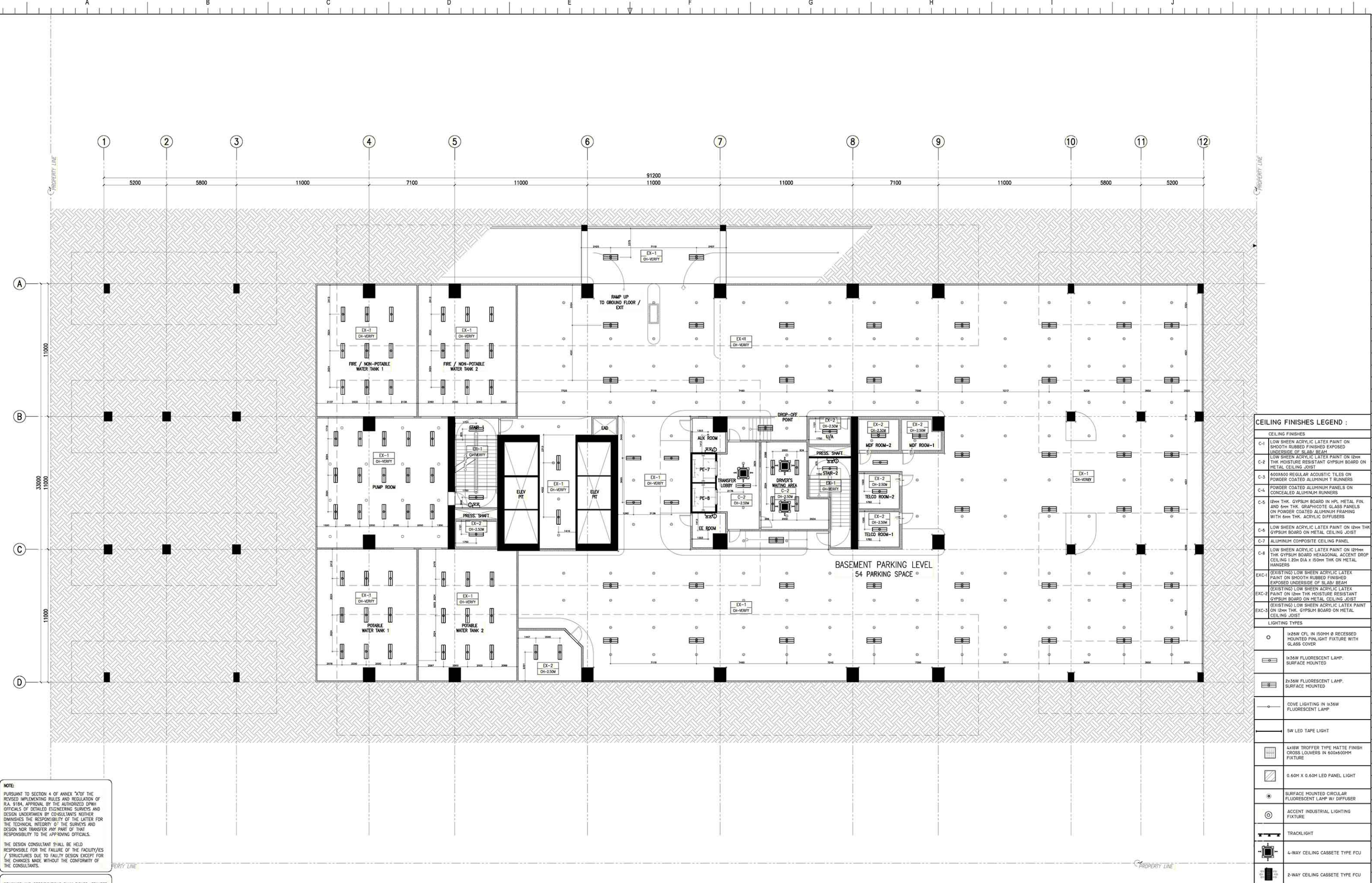
SHEET CONTENT:
 BASEMENT REFLECTED CEILING PLAN

DESIGNER: E. OLANAN
CAD: AET / ADI
CHECKED: RB / AET
DATE: MAY 2021

REVISIONS:

SYMBOL	REMARK	DATE

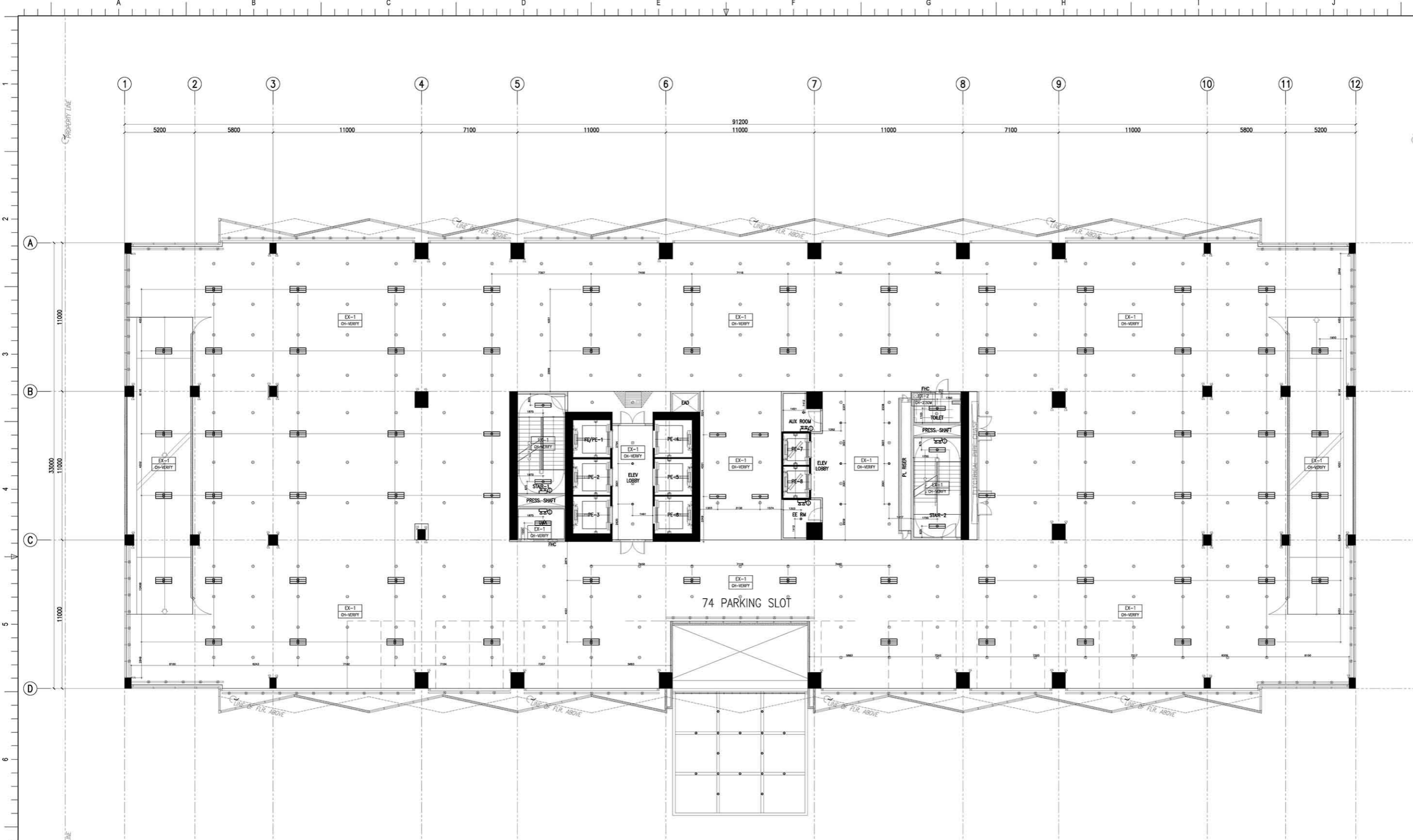
SHEET NO.: A-401



CEILING FINISHES LEGEND :

CEILING FINISHES	
C-1	LOW SHEEN ACRYLIC LATEX PAINT ON SMOOTH RUBBED FINISHED EXPOSED UNDERSIDE OF SLAB BEAM
C-2	LOW SHEEN ACRYLIC LATEX PAINT ON 12MM THK MOISTURE RESISTANT GYPSUM BOARD ON METAL CEILING JOIST
C-3	60X60 REGULAR ACOUSTIC TILES ON POWDER COATED ALUMINUM T RUNNERS
C-4	POWDER COATED ALUMINUM PANELS ON CONCEALED ALUMINUM RUNNERS
C-5	12MM THK GYPSUM BOARD IN HPL METAL FIN. AND 6MM THK GRAPHICOTE GLASS PANELS ON POWDER COATED ALUMINUM FRAMING WITH 6MM THK ACRYLIC DIFFUSERS
C-6	LOW SHEEN ACRYLIC LATEX PAINT ON 12MM THK GYPSUM BOARD ON METAL CEILING JOIST
C-7	ALUMINUM COMPOSITE CEILING PANEL
C-8	LOW SHEEN ACRYLIC LATEX PAINT ON 12MM THK GYPSUM BOARD HEXAGONAL ACCENT DROP CEILING 1.20M DIA X 150MM THK ON METAL HANGERS
EXC-1	(EXISTING) LOW SHEEN ACRYLIC LATEX PAINT ON SMOOTH RUBBED FINISHED EXPOSED UNDERSIDE OF SLAB BEAM
EXC-2	(EXISTING) LOW SHEEN ACRYLIC LATEX PAINT ON 12MM THK MOISTURE RESISTANT GYPSUM BOARD ON METAL CEILING JOIST
EXC-3	(EXISTING) LOW SHEEN ACRYLIC LATEX PAINT ON 12MM THK GYPSUM BOARD ON METAL CEILING JOIST
LIGHTING TYPES	
	1x24W CFL IN 150MM Ø RECESSED MOUNTED FLIGHT FIXTURE WITH GLASS COVER
	1x35W FLUORESCENT LAMP SURFACE MOUNTED
	2x35W FLUORESCENT LAMP SURFACE MOUNTED
	COVE LIGHTING IN 1x35W FLUORESCENT LAMP
	5W LED TAPE LIGHT
	4x18W TROFFER TYPE MATTE FINISH CROSS LOUVERS IN 600x600MM FIXTURE
	0.60M X 0.60M LED PANEL LIGHT
	SURFACE MOUNTED CIRCULAR FLUORESCENT LAMP W/ DIFFUSER
	ACCENT INDUSTRIAL LIGHTING FIXTURE
	TRACKLIGHT
	4-WAY CEILING CASSETTE TYPE FCU
	2-WAY CEILING CASSETTE TYPE FCU
	RECESSED SPRINKLER HEAD (CHROMED FINISHED WITH ESCUTCHEON PLATE)
	UPRIGHT SPRINKLER HEAD
C-0	<CEILING FINISH> <CEILING HEIGHT>

1 BASEMENT REFLECTED CEILING PLAN
 SCALE 1:100 M.



1 SECOND FLOOR REFLECTED CEILING PLAN
 A-403 SCALE 1:100 M.

CEILING FINISHES LEGEND :	
CEILING FINISHES	
C-1	LOW SHEEN ACRYLIC LATEX PAINT ON SMOOTH RUBBED FINISHED EXPOSED UNDERSIDE OF SLAB BEAM
C-2	LOW SHEEN ACRYLIC LATEX PAINT ON 12mm THK MOISTURE RESISTANT GYPSUM BOARD ON METAL CEILING JOIST
C-3	600x600 REGULAR ACOUSTIC TILES ON POWDER COATED ALUMINUM T RUNNERS
C-4	POWDER COATED ALUMINUM PANELS ON CONCEALED ALUMINUM RUNNERS
C-5	12mm THK GYPSUM BOARD IN HPL METAL FIN. AND 6mm THK GRAPHICOTE GLASS PANELS ON POWDER COATED ALUMINUM FRAMING WITH 6mm THK ACRYLIC DIFFUSERS
C-6	LOW SHEEN ACRYLIC LATEX PAINT ON 12mm THK GYPSUM BOARD ON METAL CEILING JOIST
C-7	ALUMINUM COMPOSITE CEILING PANEL
C-8	LOW SHEEN ACRYLIC LATEX PAINT ON 12mm THK GYPSUM BOARD HEXAGONAL ACCENT DROP CEILING 120mm DIA x 150mm THK ON METAL HANGERS
EXC-1	(EXISTING) LOW SHEEN ACRYLIC LATEX PAINT ON SMOOTH RUBBED FINISHED EXPOSED UNDERSIDE OF SLAB BEAM
EXC-2	(EXISTING) LOW SHEEN ACRYLIC LATEX PAINT ON 12mm THK MOISTURE RESISTANT GYPSUM BOARD ON METAL CEILING JOIST
EXC-3	(EXISTING) LOW SHEEN ACRYLIC LATEX PAINT ON 12mm THK GYPSUM BOARD ON METAL CEILING JOIST
LIGHTING TYPES	
○	1x25W CFL IN 150mm Ø RECESSED MOUNTED PINLIGHT FIXTURE WITH GLASS COVER
▬	1x35W FLUORESCENT LAMP SURFACE MOUNTED
▬	2x35W FLUORESCENT LAMP SURFACE MOUNTED
—	COVE LIGHTING IN 1x35W FLUORESCENT LAMP
—	5W LED TAPE LIGHT
▬	4x18W TROFFER TYPE MATTE FINISH CROSS LOUVERS IN 600x600mm FIXTURE
▬	0.60M X 0.60M LED PANEL LIGHT
⊙	SURFACE MOUNTED CIRCULAR FLUORESCENT LAMP W/ DIFFUSER
⊙	ACCENT INDUSTRIAL LIGHTING FIXTURE
—	TRACKLIGHT
⊙	4-WAY CEILING CASSETTE TYPE FCU
⊙	2-WAY CEILING CASSETTE TYPE FCU
⊙	RECESSED SPRINKLER HEAD (CHROED FINISHED WITH ESCUTCHEON PLATE)
⊙	UPRIGHT SPRINKLER HEAD
C-0	<CEILING FINISH>
CH-0.00M	<CEILING HEIGHT>

NOTE:
 PURSUANT TO SECTION 4 OF ANNEX "A" OF THE REVISED IMPLEMENTING RULES AND REGULATION OF R.A. 9164, APPROVAL BY THE AUTHORIZED DPWH OFFICIALS OF DETAILED ENGINEERING SURVEYS AND DESIGN UNDERTAKEN BY CONSULTANTS NEITHER DIMINISHES THE RESPONSIBILITY OF THE LATTER FOR THE TECHNICAL INTEGRITY OF THE SURVEYS AND DESIGN NOR TRANSFER ANY PART OF THAT RESPONSIBILITY TO THE APPROVING OFFICIALS.
 THE DESIGN CONSULTANT SHALL BE HELD RESPONSIBLE FOR THE FAILURE OF THE FACILITY/ES / STRUCTURES DUE TO FAULTY DESIGN EXCEPT FOR THE CHANGES MADE WITHOUT THE CONFORMITY OF THE CONSULTANTS.

DRAWINGS AND SPECIFICATIONS DULY SIGNED, STAMPED OR SEALED, AS INSTRUMENTS OF SERVICE, ARE PROPERTY AND DOCUMENTS OF THE ARCHITECT, WHETHER THE OBJECT FOR WHICH THEY ARE MADE IS EXECUTED OR NOT. IT SHALL BE UNLAWFUL FOR ANY PERSON, WITHOUT THE WRITTEN CONSENT OF THE ARCHITECT OR AUTHOR OF SAID DOCUMENTS, TO DUPLICATE OR TO MAKE COPIES OF SAID DOCUMENTS FOR USE IN THE REPEITION OF AND FOR OTHER PROJECTS OR BUILDINGS, WHETHER EXECUTED PARTLY OR IN WHOLE.

		CONSULTANT:	ENRIQUE O. OLANAN	CHECKED:	JOSE MANUEL AGUIBALDO	REVIEWED:	ATTY. JOHNSON V. DOMINGO	RECOMMENDING APPROVAL:	REYNOR R. IMPERIAL	APPROVED:	LEO B. MALAGAR	PROJECT:	CONSTRUCTION OF FIT-OUT AND LANDSCAPE WORKS FOR THE TWENTY-THREE (23) STOREY PHILIPPINE STATISTICS AUTHORITY (PSA) OFFICE BUILDING WITH COVERED ROOF DECK	SHEET CONTENT:	SECOND FLOOR REFLECTED CEILING PLAN	DESIGNER:	E. OLANAN	REVISIONS:		SHEET NO.:	A-403
		PROJECT MANAGER:	JOSE MANUEL AGUIBALDO	PROJECT MANAGER II:	JOSE MANUEL AGUIBALDO	PROJECT DIRECTOR:	ATTY. JOHNSON V. DOMINGO	PROJECT DIRECTOR II:	ATTY. JOHNSON V. DOMINGO	ASSISTANT NATIONAL STATISTICIAN:	LEO B. MALAGAR	NATIONAL STATISTICIAN AND CIVIL REGISTRAR GENERAL:	LEO B. MALAGAR	LOCATION:	PSA COMPLEX, EAST AVENUE, DILIMAN, QUEZON CITY	DESIGNER CAD:	E. OLANAN	CHECKED RIB / AET:		DATE:	MAY 2021