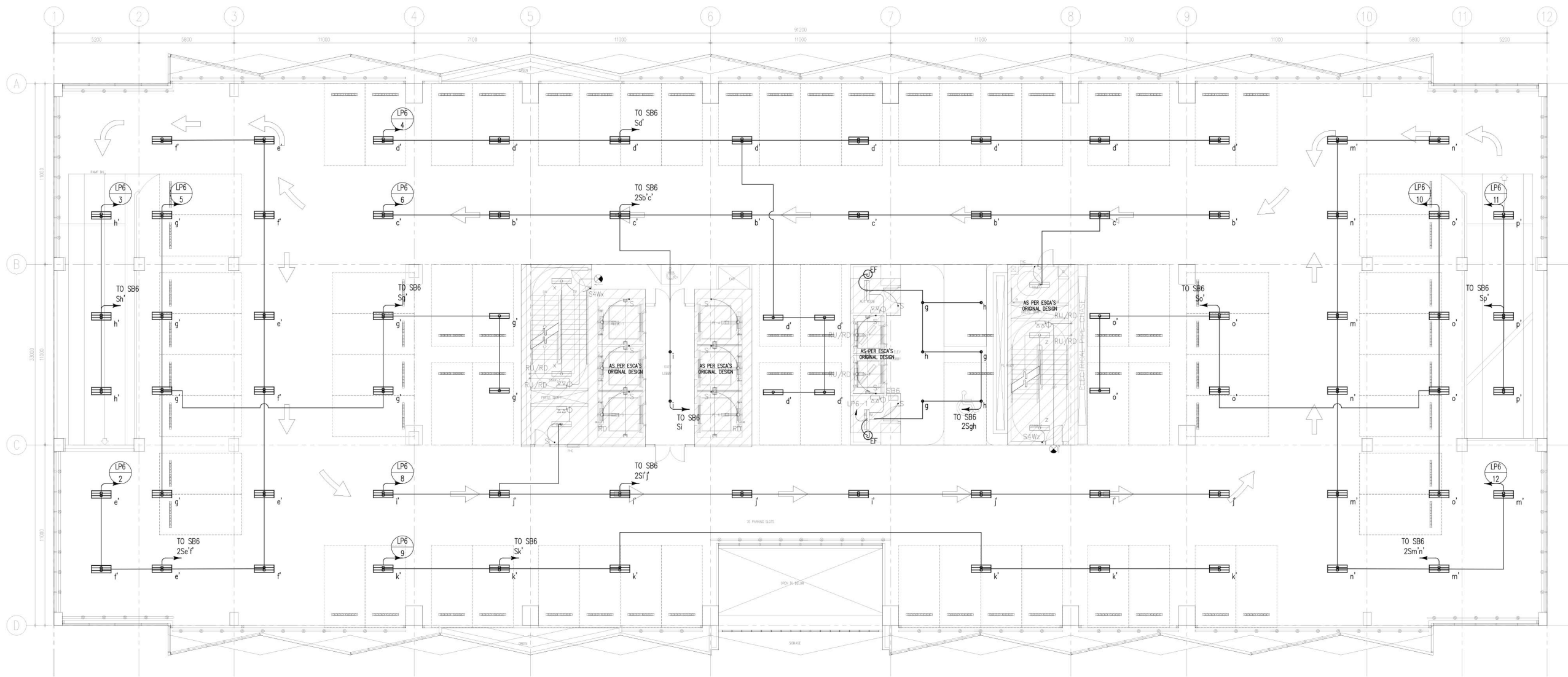


1 TYPICAL 3RD TO 5TH FLOOR POWER SYSTEM LAYOUT
 EE-09 SCALE: 1:100M

NOTE:
 PURSUANT TO SECTION 4 OF ANNEX "A" OF THE REVISED IMPLEMENTING RULES AND REGULATION OF R.A. 9164, APPROVAL BY THE AUTHORIZED DPWH OFFICIALS OF DETAILED ENGINEERING SURVEYS AND DESIGN UNDERTAKEN BY CONSULTANTS NEITHER DIMINISHES THE RESPONSIBILITY OF THE LATTER FOR THE TECHNICAL INTEGRITY OF THE SURVEYS AND DESIGN NOR TRANSFER ANY PART OF THAT RESPONSIBILITY TO THE APPROVING OFFICIALS.
 THE DESIGN CONSULTANT SHALL BE HELD RESPONSIBLE FOR THE FAILURE OF THE FACILITY/ES / STRUCTURES DUE TO FAULTY DESIGN EXCEPT FOR THE CHANGES MADE WITHOUT THE CONFORMITY OF THE CONSULTANTS.

DRAWINGS AND SPECIFICATIONS DULY SIGNED, STAMPED OR SEALED, AS INSTRUMENTS OF SERVICE, ARE PROPERTY AND DOCUMENTS OF THE ARCHITECT. WHETHER THE OBJECT FOR WHICH THEY ARE MADE IS EXECUTED OR NOT, IT SHALL BE UNLAWFUL FOR ANY PERSON, WITHOUT THE WRITTEN CONSENT OF THE ARCHITECT OR AUTHOR OF SAID DOCUMENTS, TO DUPLICATE OR TO MAKE COPIES OF SAID DOCUMENTS FOR USE IN THE REPEITION OF AND FOR OTHER PROJECTS OR BUILDINGS, WHETHER EXECUTED PARTLY OR IN WHOLE.

 Suite 205, Zouaveville Square Condominium, 703 38th Avenue Ave. Loyola Heights, Quezon City Tel No. (832) 8671 8069 Email: tokwingcorp@yahoo.com.ph	 ARCHITECTS ENGINEERS CONSULTANTS Suite 205, Zouaveville Square Condominium, 703 38th Avenue Ave. Loyola Heights, Quezon City Tel No. (832) 7917 5339 Email: eolondesign@gmail.com	CONSULTANT: MANUEL V. PANIS PROFESSIONAL ELECTRICAL ENGINEER REG. NO. : 02125 VALIDITY : 10/13/2023 PIR NO. : 814497 DATE : 01/03/2022 PLACE : ANTIPOLO CITY TIN NO. : 132-466-222	CHECKED: JOSIE MANUEL AGUILARDO PROJECT MANAGER @ BUILDING & SPECIAL PROJECTS MANAGEMENT CLUSTER UNIFIED PROJECT MANAGEMENT OFFICE, DPWH	REVIEWED: ATTY. JOHNSON V. DOMINICO PROJECT DIRECTOR BUILDING & SPECIAL PROJECTS MANAGEMENT CLUSTER UNIFIED PROJECT MANAGEMENT OFFICE, DPWH	RECOMMENDING APPROVAL: REYNOR R. IMPERIAL DIRECTOR III PLANNING AND MANAGEMENT SERVICE CO-HEAD, PSA-BCOM	APPROVED: SOCRATES L. RAMORES DIRECTOR IV ASSISTANT NATIONAL STATISTICIAN FINANCE AND ADMINISTRATIVE SERVICE HEAD, PSA-BCOM	APPROVED: LEO B. MALAGAR ASSISTANT SECRETARY DEPUTY NATIONAL STATISTICIAN CIVIL REGISTRATION & GENERAL SUPPORT OFFICE	APPROVED: USEC. CLAIRE DENNIS S. MAPA, PH. D. NATIONAL STATISTICIAN AND CIVIL REGISTRAR GENERAL PHILIPPINE STATISTICS AUTHORITY	PROJECT: CONSTRUCTION OF FIT-OUT AND LANDSCAPE WORKS FOR THE TWENTY-THREE (23) STOREY PHILIPPINE STATISTICS AUTHORITY (PSA) OFFICE BUILDING WITH COVERED ROOF DECK LOCATION: PSA COMPLEX, EAST AVENUE, DILIMAN, QUEZON CITY	SHEET CONTENT: TYPICAL 3RD TO 5TH FLOOR POWER SYSTEM LAYOUT	DESIGNER : LPG CAD : LPC CHECKED : MVP DATE : FEB. 2022	REVISIONS SYMBOL REMARK DATE	SHEET NO. EE-09
		DRAWINGS AND SPECIFICATIONS DULY SIGNED, STAMPED OR SEALED, AS INSTRUMENTS OF SERVICE, ARE PROPERTY AND DOCUMENTS OF THE ARCHITECT. WHETHER THE OBJECT FOR WHICH THEY ARE MADE IS EXECUTED OR NOT, IT SHALL BE UNLAWFUL FOR ANY PERSON, WITHOUT THE WRITTEN CONSENT OF THE ARCHITECT OR AUTHOR OF SAID DOCUMENTS, TO DUPLICATE OR TO MAKE COPIES OF SAID DOCUMENTS FOR USE IN THE REPEITION OF AND FOR OTHER PROJECTS OR BUILDINGS, WHETHER EXECUTED PARTLY OR IN WHOLE.											



1 6TH FLOOR LIGHTING SYSTEM LAYOUT
 EE-10 SCALE: 1:1000

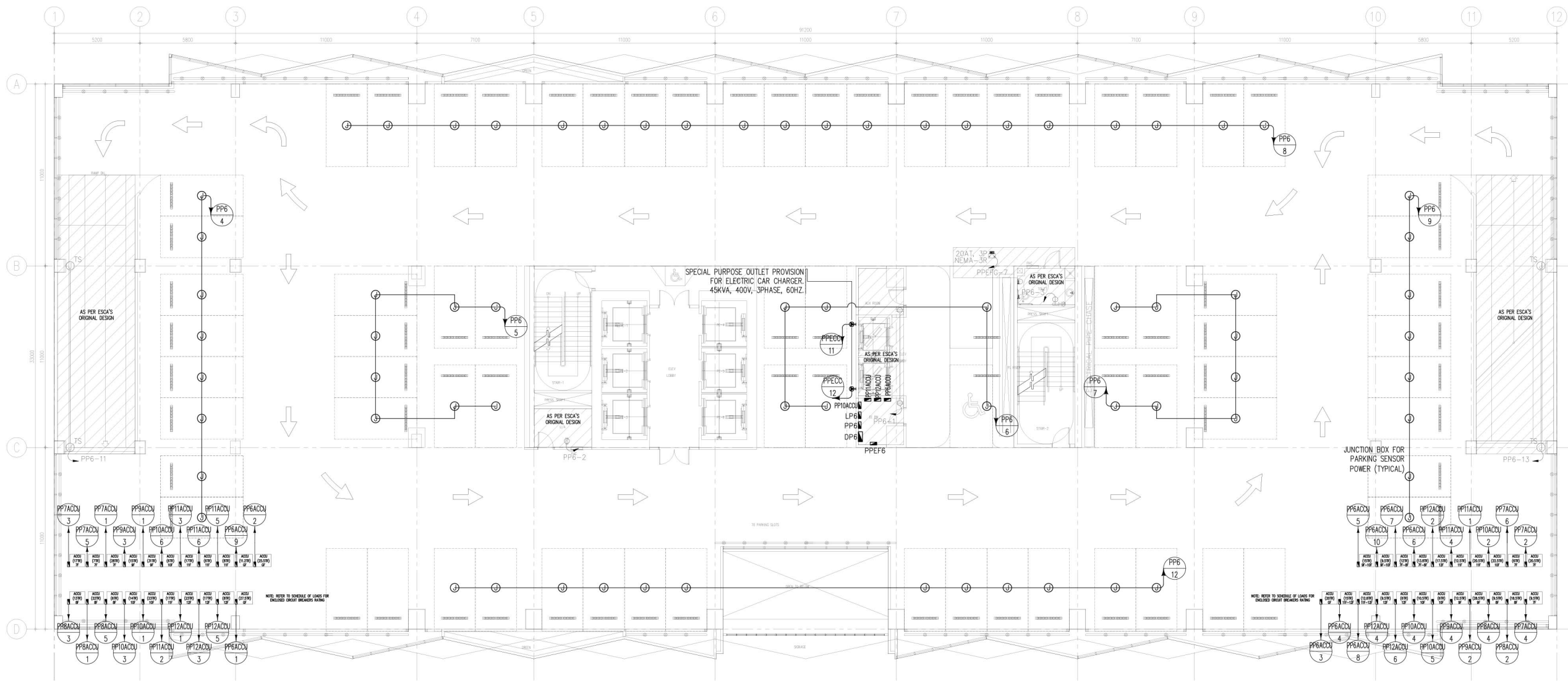
NOTE:
 PURSUANT TO SECTION 4 OF ANNEX "A" OF THE REVISED IMPLEMENTING RULES AND REGULATION OF R.A. 9164, APPROVAL BY THE AUTHORIZED DPWH OFFICIALS OF DETAILED ENGINEERING SURVEYS AND DESIGN UNDERTAKEN BY CONSULTANTS NEITHER DIMINISHES THE RESPONSIBILITY OF THE LATTER FOR THE TECHNICAL INTEGRITY OF THE SURVEYS AND DESIGN NOR TRANSFER ANY PART OF THAT RESPONSIBILITY TO THE APPROVING OFFICIALS.

THE DESIGN CONSULTANT SHALL BE HELD RESPONSIBLE FOR THE FAILURE OF THE FACILITY/ES / STRUCTURES DUE TO FAULTY DESIGN EXCEPT FOR THE CHANGES MADE WITHOUT THE CONFORMITY OF THE CONSULTANTS.

DRAWINGS AND SPECIFICATIONS DULY SIGNED, STAMPED OR SEALED, AS INSTRUMENTS OF SERVICE, ARE PROPERTY AND DOCUMENTS OF THE ARCHITECT. WHETHER THE OBJECT FOR WHICH THEY ARE MADE IS EXECUTED OR NOT, IT SHALL BE UNLAWFUL FOR ANY PERSON, WITHOUT THE WRITTEN CONSENT OF THE ARCHITECT OR AUTHOR OF SAID DOCUMENTS, TO DUPLICATE OR TO MAKE COPIES OF SAID DOCUMENTS FOR USE IN THE REPEITION OF AND FOR OTHER PROJECTS OR BUILDINGS, WHETHER EXECUTED PARTLY OR IN WHOLE.



CONSULTANT: MANUEL V. PANIS PROFESSIONAL ELECTRICAL ENGINEER REG. NO. : 02916 VALIDITY : 10/13/2023 PPS NO. : 8144987 DATE : 01/23/2022 PLACE : ANTIPOLO CITY TIN NO. : 132-466-222	CHECKED: JOSIE MANUEL AGUILARDO PROJECT MANAGER II BUILDING & SPECIAL PROJECTS MANAGEMENT CLUSTER UNIFIED PROJECT MANAGEMENT OFFICE, DPWH	REVIEWED: ATTY. JOHNSON V. DOMINICO PROJECT DIRECTOR BUILDING & SPECIAL PROJECTS MANAGEMENT CLUSTER UNIFIED PROJECT MANAGEMENT OFFICE, DPWH	RECOMMENDING APPROVAL: REYNOR R. IMPERIAL DIRECTOR III PLANNING AND MANAGEMENT SERVICE CO-HEAD, PSA-BCOM SOCRATES L. RAMORES DIRECTOR IV ASSISTANT NATIONAL STATISTICIAN FINANCE AND ADMINISTRATIVE SERVICE HEAD, PSA-BCOM	APPROVED: LEO B. MALAGAR ASSISTANT SECRETARY DEPUTY NATIONAL STATISTICIAN CIVIL REGISTRATION & GENERAL SUPPORT OFFICE USEC. CLAIRE DENNIS S. MAPA, PH. D. NATIONAL STATISTICIAN AND CIVIL REGISTRAR GENERAL PHILIPPINE STATISTICS AUTHORITY	PROJECT: CONSTRUCTION OF FIT-OUT AND LANDSCAPE WORKS FOR THE TWENTY-THREE (23) STOREY PHILIPPINE STATISTICS AUTHORITY (PSA) OFFICE BUILDING WITH COVERED ROOF DECK LOCATION: PSA COMPLEX, EAST AVENUE, DILIMAN, QUEZON CITY	SHEET CONTENT: 6TH FLOOR LIGHTING SYSTEM LAYOUT	DESIGNER : LPG CAD : LPC CHECKED : MVP DATE : FEB. 2022	REVISIONS SYMBOL REMARK DATE	SHEET NO. EE-10
--------------------------------------------------------------------------------------------------------------------------------------------------------------------------------------------------------------------	--------------------------------------------------------------------------------------------------------------------------------------------------------------	----------------------------------------------------------------------------------------------------------------------------------------------------------------	---------------------------------------------------------------------------------------------------------------------------------------------------------------------------------------------------------------------------------------------------------------------	--------------------------------------------------------------------------------------------------------------------------------------------------------------------------------------------------------------------------------------------------------------------------------	------------------------------------------------------------------------------------------------------------------------------------------------------------------------------------------------------------------------------------------	-----------------------------------------------------------	------------------------------------------------------------------	---------------------------------------	---------------------------



1 6TH FLOOR POWER SYSTEM LAYOUT
 EE-11 SCALE: 1:100M

NOTE:
 PURSUANT TO SECTION 4 OF ANNEX "A" OF THE REVISED IMPLEMENTING RULES AND REGULATION OF R.A. 9164, APPROVAL BY THE AUTHORIZED DPWH OFFICIALS OF DETAILED ENGINEERING SURVEYS AND DESIGN UNDERTAKEN BY CONSULTANTS NEITHER DIMINISHES THE RESPONSIBILITY OF THE LATTER FOR THE TECHNICAL INTEGRITY OF THE SURVEYS AND DESIGN NOR TRANSFER ANY PART OF THAT RESPONSIBILITY TO THE APPROVING OFFICIALS.
 THE DESIGN CONSULTANT SHALL BE HELD RESPONSIBLE FOR THE FAILURE OF THE FACILITY/ES / STRUCTURES DUE TO FAULTY DESIGN EXCEPT FOR THE CHANGES MADE WITHOUT THE CONFORMITY OF THE CONSULTANTS.

DRAWINGS AND SPECIFICATIONS DULY SIGNED, STAMPED OR SEALED, AS INSTRUMENTS OF SERVICE, ARE PROPERTY AND DOCUMENTS OF THE ARCHITECT. WHETHER THE OBJECT FOR WHICH THEY ARE MADE IS EXECUTED OR NOT, IT SHALL BE UNLAWFUL FOR ANY PERSON, WITHOUT THE WRITTEN CONSENT OF THE ARCHITECT OR AUTHOR OF SAID DOCUMENTS, TO DUPLICATE OR TO MAKE COPIES OF SAID DOCUMENTS FOR USE IN THE REPEITION OF AND FOR OTHER PROJECTS OR BUILDINGS, WHETHER EXECUTED PARTLY OR IN WHOLE.

TOKWING CONSTRUCTION CORPORATION Lot 35, Rodriguez Drive, Rodriguez Subdivision, Quezon City Tel No. (832) 867-8069 Email: tokwingcorp@yahoo.com.ph	ENRIQUE O. OLANAN & ASSOCIATES ARCHITECTS ENGINEERS CONSULTANTS Suite 205, Zouaveville Square Condominium, No.38 Zouaveville Ave, Loyola Heights, Quezon City Tel No. (832) 7917-5338 Email: eolanan@enrigo.com	CONSULTANT: MANUEL V. PANIS PROFESSIONAL ELECTRICAL ENGINEER REG. NO. : 02120 VALIDITY : 10/13/2023 PIR NO. : 814497 DATE : 01/03/2022 PLACE : ANTIPOLO CITY TN NO : 132-466-222	CHECKED: JOSE MANUEL AGUILARDO PROJECT MANAGER II BUILDING & SPECIAL PROJECTS MANAGEMENT CLUSTER UNIFIED PROJECT MANAGEMENT OFFICE, DPWH	REVIEWED: ATTY. JOHNSON V. DOMINCO PROJECT DIRECTOR BUILDING & SPECIAL PROJECTS MANAGEMENT CLUSTER UNIFIED PROJECT MANAGEMENT OFFICE, DPWH	RECOMMENDING APPROVAL: REYNOR R. IMPERIAL DIRECTOR III PLANNING AND MANAGEMENT SERVICE CO-HEAD, PSA-BOCM	APPROVED: SOCRATES L. RAMORES DIRECTOR IV ASSISTANT SECRETARY FINANCE AND ADMINISTRATIVE SERVICE HEAD, PSA-BOCM	APPROVED: LEO B. MALAGAR ASSISTANT SECRETARY DEPUTY NATIONAL STATISTICIAN CIVIL REGISTRATION & GENERAL SUPPORT OFFICE	APPROVED: USEC. CLAIRE DENNIS S. MAPA, PH. D. NATIONAL STATISTICIAN AND CIVIL REGISTRAR GENERAL PHILIPPINE STATISTICS AUTHORITY	PROJECT: CONSTRUCTION OF FIT-OUT AND LANDSCAPE WORKS FOR THE TWENTY-THREE (23) STOREY PHILIPPINE STATISTICS AUTHORITY (PSA) OFFICE BUILDING WITH COVERED ROOF DECK LOCATION: PSA COMPLEX, EAST AVENUE, DILIMAN, QUEZON CITY	SHEET CONTENT: 6TH FLOOR POWER SYSTEM LAYOUT	DESIGNER : LPG CAD : LPC CHECKED : MVP DATE : FEB. 2022	REVISIONS SYMBOL REMARK DATE	SHEET NO.: EE-11
		NOTE: REFER TO SCHEDULE OF LOADS FOR ENCLOSED CIRCUIT BREAKERS RATING											