

EQUIPMENT SCHEDULE

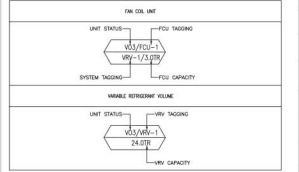
FAN COIL UNIT (FCU) W/ MATCHING VARIABLE REFRIGERANT VOLUME (VRV)

STATUS/UNIT	VARIABLE REFRIGERANT VOLUME (VRV)													FAN COIL UNIT (FCU)														
	TOTAL COOLING CAP. (HP)/(TR)	LOCATION	MODEL	QTY.	MODEL COOLING CAP. KW(HP) / BTUH(TR)	REFRIGERANT TYPE	PIPING CONNECTIONS LIQUID (MM) GAS (MM)		ELECTRICAL DATA INPUT (KW) VOLT PHASE HERTZ			EER	STATUS/UNIT	LOCATION	QTY.	TOTAL COOLING CAP. KW(HP) / BTUH(TR)	MODEL TYPE	AIR FLOW RATE (CFM)	E.S.P. (Pa)	PIPING CONNECTIONS LIQUID (MM) GAS (MM)		ELECTRICAL DATA INPUT (KW) VOLT PHASE HERTZ			BASIS OF DESIGN (MODEL)	REMARKS		
VO4/VRV-1	4.0 / 3.0	BASEMENT	DAIKIN RXMQ4AVE	4	11.2(4.0) / 38,200(3.0)	R-410A	9.50ø	15.9ø	2.88	220	1	60	13.26	VO4/FCU-8	MDF ROOM 1 MDF ROOM 2 TELCO ROOM 1 TELCO ROOM 2	8	5.6(2.0) / 19,100(1.5)	WALL MOUNTED FREE BLOW	600	-	6.40ø	12.70ø	0.033	220	1	60	DAIKIN FXAQ50PVE	EXISTING UNDER PHASE 1 BASE BUILDING DESIGN
VO4/VRV-2	6.0 / 4.5	BASEMENT	DAIKIN RXQ6AYM	1	16.0(6.0) / 54,600(4.50)	R-410A	9.50ø	19.10ø	3.38	380	3	60	16.15	VO4/FCU-1	TRANSFER AREA DRIVERS AREA	3	5.6(2.0) / 19,100(1.5)	4-WAY CEILING CASSETTE FREE BLOW	600	-	6.40ø	12.70ø	0.040	220	1	60	DAIKIN FXFQ50AVM	

VENTILATING FANS

UNIT DESIGNATION	AREA SERVED	QTY.	AIR FLOW (CFM)	TYPE	TOTAL STATIC PRESSURE (Pa)	OUTLET VELOCITY (m/s)	MOTOR/MAX POWER INPUT (kW)	MOTOR TYPE	MOTOR EFFICIENCY (%)	ELECTRICAL CHARACTERISTICS VOLTS PHASE HERTZ			REMARKS
VO3-EF-6	BASEMENT PUMP ROOM	1	8,800	IN-LINE FAN	25	-	0.20	BELT DRIVE	-	380	3	60	EXISTING UNDER PHASE 1 & VO3 WITH COMPLETE ACCESSORIES
VO3-JF-1	PARKING AREA	10	4,300	INDUCED JET FAN	65	-	0.056	DIRECT DRIVE	-	220	1	60	EXISTING UNDER PHASE 1 & VO3 WITH COMPLETE ACCESSORIES
VO3-EF-7	BASEMENT PARKING AREA	1	34,000	IN-LINE FAN	-	-	-	BELT DRIVE	-	380	3	60	EXISTING UNDER PHASE 1 & VO3 WITH COMPLETE ACCESSORIES
EF-1	FILE ROOM, AUX, EE ROOM	3	100	CEILING CASSETTE	65	-	0.10	DIRECT DRIVE	-	220	1	60	NEW UNIT IS KDK, NICOTRA, SYSTEMENT BRAND WITH COMPLETE ACCESSORIES

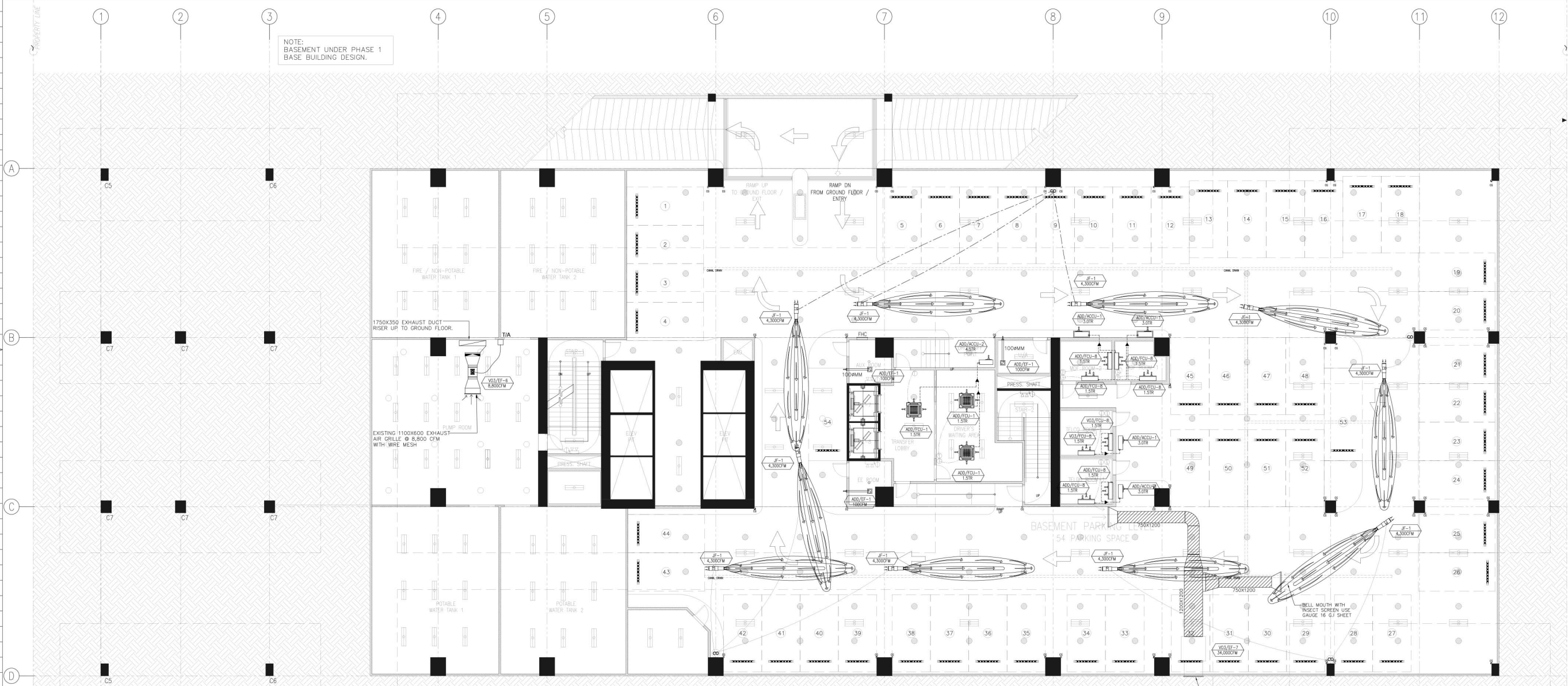
TAGGING DESCRIPTION:



LEGEND AND SYMBOLS/ABBREVIATION:

SYMBOL	DESCRIPTION
⊠	4-WAY CEILING CASSETTE TYPE FAN COIL UNIT
⊞	3-WAY CEILING CASSETTE TYPE FAN COIL UNIT
⊞	WALL MOUNTED TYPE FAN COIL UNIT
⊞	CEILING SUSPENDED TYPE FAN COIL UNIT
—	NEW REFRIGERANT PIPE
—	NEW REFRIGERANT PIPE RISER
—	NEW REFRIG. JOINT
—	EXISTING REFRIGERANT PIPE
—	EXISTING REFRIG. JOINT
—	EXISTING EXHAUST AIR FAN
—	EXISTING EXHAUST AIR DUCT
—	EXISTING EXHAUST AIR GRILLE
—	EXISTING FLEXIBLE EXHAUST AIR DUCT
—	NEW FRESH AIR DUCT RISER
—	NEW EXHAUST AIR DUCT RISER
—	MOTORIZED VOLUME DAMPER
—	VOLUME DAMPER
—	NEW FRESH AND EXHAUST AIR DUCT
—	NEW EXHAUST AIR GRILLE
—	NEW FRESH AIR GRILLE
—	NEW SMOKE CEILING EXHAUST AIR GRILLE
—	NEW SMOKE CEILING EXHAUST BELLOUS GRILLE

ABBREVIATION	DESCRIPTION
SM	SQUARE METER
CM	CUBIC FEET PER METER
MM	MILLIMETER
M	METER
KG	KILOGRAM
KG	KILOGRAM
DA. (Ø)	DIAMETER
QTY.	QUANTITY
TSP	TOTAL STATIC PRESSURE
FR	FREEL
VPH/MS	VOLTS/PHASE/HERTZ
FCU	FAN COIL UNIT
EXG	EXHAUST AIR GRILLE
FAG	FRESH AIR GRILLE
EXD	EXHAUST AIR DUCT
FND	FRESH AIR DUCT
SAD	SUPPLY AIR DUCT
RAD	RETURN AIR DUCT
FND	FRESH AIR DUCT
SAD	SUPPLY AIR DUCT
LD	LEADER DOOR



NOTE:
PURSUANT TO SECTION 4 OF ANNEX "A" OF THE REVISED IMPLEMENTING RULES AND REGULATION OF R.A. 9164, APPROVAL BY THE AUTHORIZED DPWH OFFICIALS OF DETAILED ENGINEERING SURVEYS AND DESIGN UNDERTAKEN BY CONSULTANTS NEITHER DIMINISHES THE RESPONSIBILITY OF THE LATTER FOR THE TECHNICAL INTEGRITY OF THE SURVEYS AND DESIGN NOR TRANSFER ANY PART OF THAT RESPONSIBILITY TO THE APPROVING OFFICIALS.

THE DESIGN CONSULTANT SHALL BE HELD RESPONSIBLE FOR THE FAILURE OF THE FACILITY/IES / STRUCTURES DUE TO FAULTY DESIGN EXCEPT FOR THE CHANGES MADE WITHOUT THE CONFORMITY OF THE CONSULTANTS.

DRAWINGS AND SPECIFICATIONS DULY SIGNED, STAMPED OR SEALED, AS INSTRUMENTS OF SERVICE, ARE PROPERTY AND DOCUMENTS OF THE ARCHITECT, WHETHER THE OBJECT FOR WHICH THEY ARE MADE IS EXECUTED OR NOT. IT SHALL BE UNLAWFUL FOR ANY PERSON, WITHOUT THE WRITTEN CONSENT OF THE ARCHITECT OR AUTHOR OF SAID DOCUMENTS, TO DUPLICATE OR TO MAKE COPIES OF SAID DOCUMENTS FOR USE IN THE REPEITION OF AND FOR OTHER PROJECTS OR BUILDINGS, WHETHER EXECUTED PARTLY OR IN WHOLE.

1 BASEMENT ACMV LAYOUT
SCALE 1:100 M.