

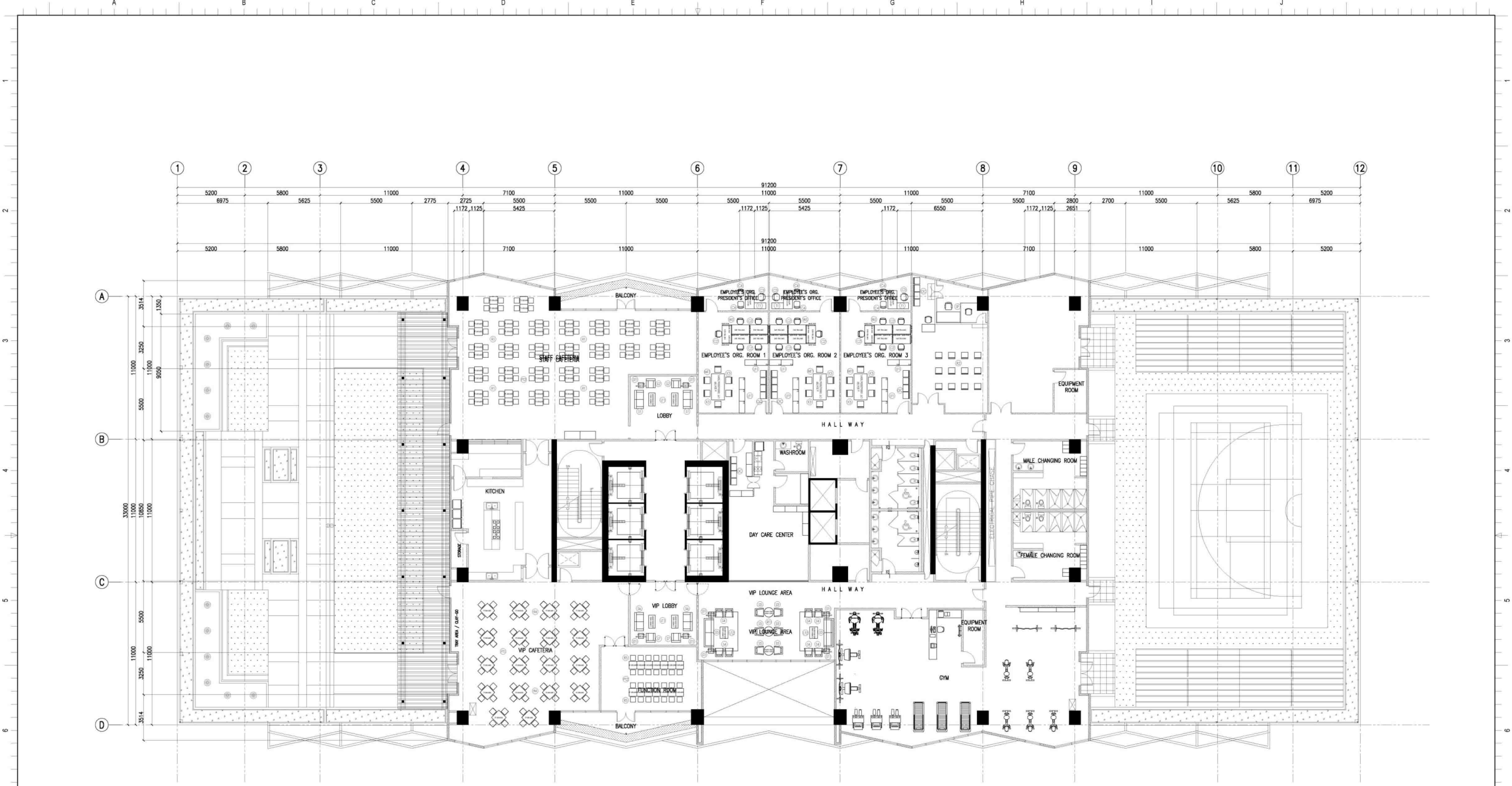
NOTE:
PURSUANT TO SECTION 4 OF ANNEX "A" OF THE REVISED IMPLEMENTING RULES AND REGULATIONS OF R.A. 9164, APPROVAL BY THE AUTHORIZED DPWH OFFICIALS OF DETAILED ENGINEERING SURVEYS AND DESIGN UNDERTAKEN BY CONSULTANTS NEITHER DIMINISHES THE RESPONSIBILITY OF THE LATTER FOR THE TECHNICAL INTEGRITY OF THE SURVEYS AND DESIGN NOR TRANSFER ANY PART OF THAT RESPONSIBILITY TO THE APPROVING OFFICIALS.

THE DESIGN CONSULTANT SHALL BE HELD RESPONSIBLE FOR THE FAILURE OF THE FACILITY/ES / STRUCTURES DUE TO FAULTY DESIGN EXCEPT FOR THE CHANGES MADE WITHOUT THE CONFORMITY OF THE CONSULTANTS.

DRAWINGS AND SPECIFICATIONS DULY SIGNED, STAMPED OR SEALED, AS INSTRUMENTS OF SERVICE, ARE PROPERTY AND DOCUMENTS OF THE ARCHITECT, WHETHER THE OBJECT FOR WHICH THEY ARE MADE IS EXECUTED OR NOT. IT SHALL BE UNLAWFUL FOR ANY PERSON, WITHOUT THE WRITTEN CONSENT OF THE ARCHITECT OR AUTHOR OF SAID DOCUMENTS, TO DUPLICATE OR TO MAKE COPIES OF SAID DOCUMENTS FOR USE IN THE REPRODUCTION OF AND FOR OTHER PROJECTS OR BUILDINGS, WHETHER EXECUTED PARTLY OR IN WHOLE.

2
A-701
GROUND FLOOR
FURNITURE LAYOUT
SCALE 1:100 M.

LEGEND:									
WS	2 SET/5	700MM X 1400MM WORKSTATION IN HPL FINISH WITH ESSO SYSTEM PARTITION 1200MM H	LF1	17 SET/5	4 LAYER LATERAL FILING CABINET IN POWDER COATED FINISH	C2	16 SET/5	BETA 2 CHAIR WITH ADJUSTABLE ARM	
T1	2 SET/5	700MM X 1400MM 17" X 40" X 30" 4-ARM HPL FINISH WITH 5040 METAL TOPS AND WIRE MANAGEMENT	GC	1 SET/5	4 SEATER CANO CHAIR	K1	2 SET/5	KAPPA 3 MID BACK CHAIR WITH ADJUSTABLE ARM	
MT1	2 SET/5	1000MM X 2000MM MEETING TABLE IN HPL FINISH WITH 5040 METAL TOPS AND WIRE MANAGEMENT	C1	12 SET/5	THEIA 2.2 MID BACK CHAIR WITH ADJUSTABLE ARM	K2	4 SET/5	KAPPA 3 CAN LEVER CHAIR WITH FIELD ARM	
SHEET CONTENT:									
F-OUT AND LANDSCAPE WORKS FOR THE EYE PHILIPPINE STATISTICS AUTHORITY (PSA) IN WITH COVERED ROOF DECK			BASEMENT & GROUND FLOOR FURNITURE LAYOUT				DESIGNER		AET / ADI
							CAD		
							CHECKED		
							DATE		
							REVISIONS		A-701
							SYMBOL	REMARK	
							DATE		
1X, LAST AVENUE, DULAP, QUEZON CITY									



1
A-702

7TH FLOOR
FURNITURE LAYOUT

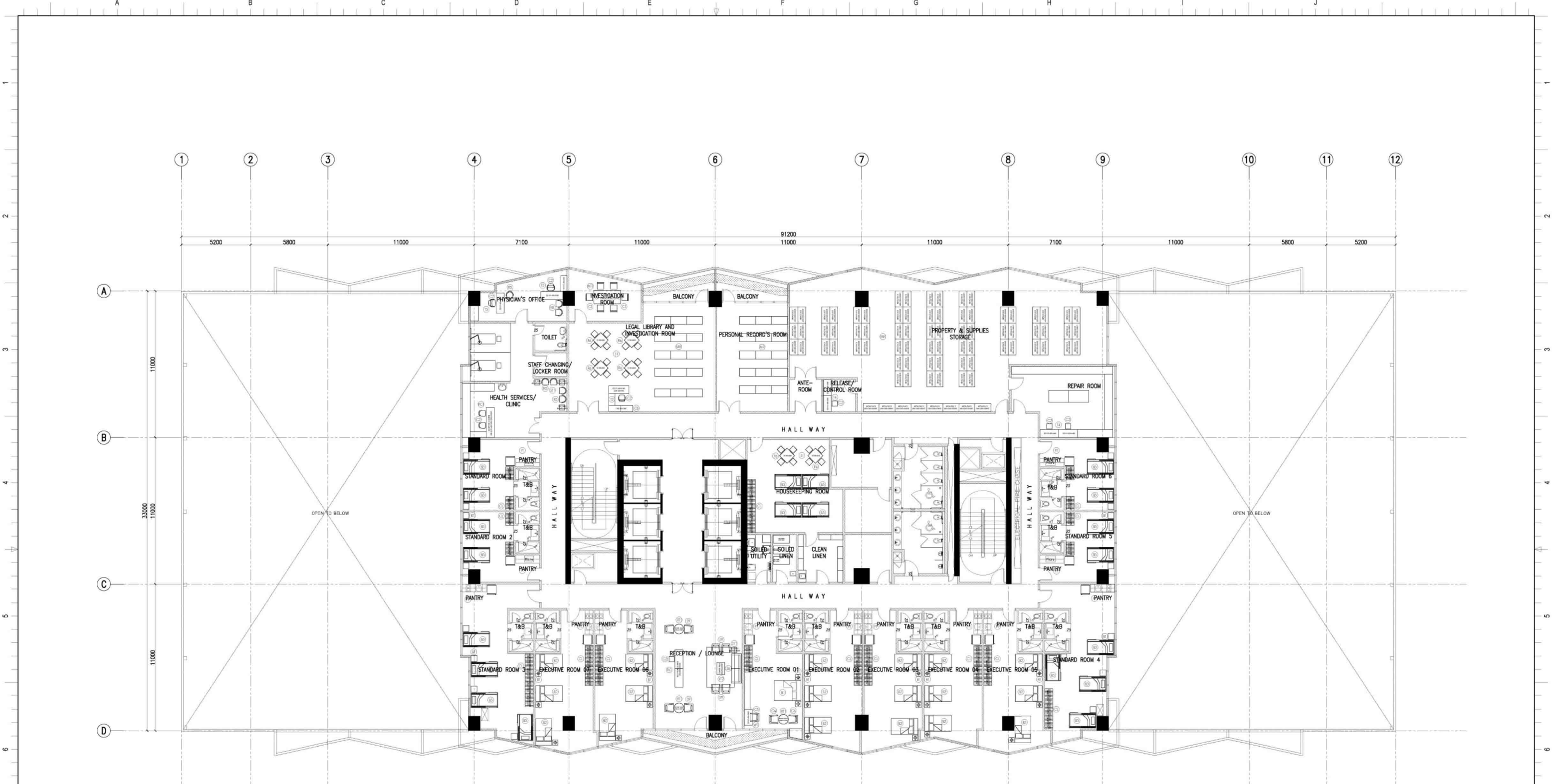
SCALE 1:100 M.

NOTE:
PURSUANT TO SECTION 4 OF ANNEX "A" OF THE REVISED IMPLEMENTING RULES AND REGULATION OF R.A. 9164, APPROVAL BY THE AUTHORIZED DPWH OFFICIALS OF DETAILED ENGINEERING SURVEYS AND DESIGN UNDERTAKEN BY CONSULTANTS NEITHER DIMINISHES THE RESPONSIBILITY OF THE LATTER FOR THE TECHNICAL INTEGRITY OF THE SURVEYS AND DESIGN NOR TRANSFER ANY PART OF THAT RESPONSIBILITY TO THE APPROVING OFFICIALS.

THE DESIGN CONSULTANT SHALL BE HELD RESPONSIBLE FOR THE FAILURE OF THE FACILITY/IES / STRUCTURES DUE TO FAULTY DESIGN EXCEPT FOR THE CHANGES MADE WITHOUT THE CONFORMITY OF THE CONSULTANTS.

DRAWINGS AND SPECIFICATIONS DULY SIGNED, STAMPED OR SEALED, AS INSTRUMENTS OF SERVICE, ARE PROPERTY AND DOCUMENTS OF THE ARCHITECT, WHETHER THE OBJECT FOR WHICH THEY ARE MADE IS EXECUTED OR NOT. IT SHALL BE UNLAWFUL FOR ANY PERSON, WITHOUT THE WRITTEN CONSENT OF THE ARCHITECT OR AUTHOR OF SAID DOCUMENTS, TO DUPLICATE OR TO MAKE COPIES OF SAID DOCUMENTS FOR USE IN THE REPRODUCTION OF AND FOR OTHER PROJECTS OR BUILDINGS, WHETHER EXECUTED PARTLY OR IN WHOLE.

LEGEND:									
WS	3 SET/S	700MM X 1400MM WORKSTATION IN HPL FINISH WITH ESSO SYSTEM PARTITION 1200MM HT.	SP	1 SET/S	JUDGE & WITNESS STAND CUBICLE WITH PLATFORM STENO FINISH	S3	2 SET/S	LE CORBUSIER CLUB CHAIR 2 SEATER	
T1	3 SET/S	700MM X 1400MM /ST 450 X 900 TABLE IN HPL FINISH WITH 15X40 METAL LEGS AND WIRE MANAGEMENT	R1	104 SET/S	RABAMI POLYPROPYLENE SEAT AND BACK CHAIR	S4	8 SET/S	LE CORBUSIER CLUB CHAIR 1 SEATER	
MT1	3 SET/S	1000MM X 2000MM MEETING TABLE IN HPL FINISH WITH 10MM THK. TEMPERED GLASS TOP	S1	2 SET/S	KAYU 2 SEATER SOFA	S5	6 SET/S	TATIANA FABRIC SEAT AND BACK	
LF1	15 SET/S	4 LAYER LATERAL FILED CABINET IN POWDER COATED FINISH	S2	2 SET/S	KAYU 1 SEATER SOFA	S6	3 SET/S	LM VAN DER ROHE BARCELONA CHAIR 2 SEATER	
PT1	32 SET/S	SQUARE PANTRY TABLE IN HPL FINISH 800MM X 800MM X 750MM HT. WITH METAL X-LEGS	C2	15 SET/S	BETA 2 CHAIR WITH ADJUSTABLE ARM	S7	2 SET/S	LM VAN DER ROHE BARCELONA CHAIR 1 SEATER	
PT2	52 SET/S	SQUARE PANTRY TABLE IN HPL FINISH 600MM X 600MM X 750MM HT. WITH METAL X-LEGS	C3	3 SET/S	ERGO HUMAN HIGH BACK LEATHER CHAIR WITH ADJUSTABLE ARM	R3	28 SET/S	ALUMINUM LOW BACK SLIM LEATHERETTE CHAIR	
LT1	4 SET/S	CENTER TABLE IN HPL FINISH 500MM X 1000MM X 800MM HT. WITH METAL LEGS	C4	6 SET/S	THETA EXECUTIVE CANTILEVER CHAIR	R4	72 SET/S	FANTASIA POLYPROPYLENE CHAIR	
LT2	2 SET/S	CENTER TABLE IN HPL FINISH 600MM X 900MM X 800MM HT. WITH METAL LEGS	GC	5 SET/S	4 SEATER GANG CHAIR				
RT1	3 SET/S	ROUND TABLE IN HPL FINISH 750MM DIA. X 750MM HT. WITH METAL LEGS	K3	18 SET/S	ALUMINUM HIGH BACK SLIM LEATHERETTE CHAIR				
ST1	8 SET/S	SIDE TABLE IN HPL FINISH 400MM X 400MM X 800MM HT. WITH METAL LEGS	R2	12 SET/S	DELFI UPHOLSTERED SEAT AND BACK FOUR LEGGED SEAT CHAIR				



1
A-703

8TH FLOOR
FURNITURE LAYOUT
SCALE 1:100 M.

NOTE:
PURSUANT TO SECTION 4 OF ANNEX "A" OF THE REVISED IMPLEMENTING RULES AND REGULATION OF R.A. 9164, APPROVAL BY THE AUTHORIZED DPWH OFFICIALS OF DETAILED ENGINEERING SURVEYS AND DESIGN UNDERTAKEN BY CONSULTANTS NEITHER DIMINISHES THE RESPONSIBILITY OF THE LATTER FOR THE TECHNICAL INTEGRITY OF THE SURVEYS AND DESIGN NOR TRANSFER ANY PART OF THAT RESPONSIBILITY TO THE APPROVING OFFICIALS.

THE DESIGN CONSULTANT SHALL BE HELD RESPONSIBLE FOR THE FAILURE OF THE FACILITY/IES / STRUCTURES DUE TO FAULTY DESIGN EXCEPT FOR THE CHANGES MADE WITHOUT THE CONFORMITY OF THE CONSULTANTS.

DRAWINGS AND SPECIFICATIONS DULY SIGNED, STAMPED OR SEALED, AS INSTRUMENTS OF SERVICE, ARE PROPERTY AND DOCUMENTS OF THE ARCHITECT, WHETHER THE OBJECT FOR WHICH THEY ARE MADE IS EXECUTED OR NOT. IT SHALL BE UNLAWFUL FOR ANY PERSON, WITHOUT THE WRITTEN CONSENT OF THE ARCHITECT OR AUTHOR OF SAID DOCUMENTS, TO DUPLICATE OR TO MAKE COPIES OF SAID DOCUMENTS FOR USE IN THE REPRODUCTION OF AND FOR OTHER PROJECTS OR BUILDINGS, WHETHER EXECUTED PARTLY OR IN WHOLE.

LEGEND:								
T2	1 SET/S	600MM X 1500MM /ST 450 X 900 TABLE IN HPL FINISH WITH 15x60 METAL LEGS AND WIRE MANAGEMENT	B1	1 SET/S	BED WITH MATTRESS 1500MM X 2000MM IN SOLID WOOD FINISH	C2	10 SET/S	BETA2 CHAIR WITH ADJUSTABLE ARM
T3	2 SET/S	600MM X 1500MM X 750MM HT. TABLE IN HPL FINISH WITH 15x60 METAL LEGS AND WIRE MANAGEMENT	B2	18 SET/S	BED WITH MATTRESS 1200MM X 2000MM IN SOLID WOOD FINISH	R5	3 SET/S	BETA 2 CANTILEVER
T4	4 SET/S	600MM X 1400MM X 750MM HT. TABLE IN HPL FINISH WITH 15x60 METAL LEGS AND WIRE MANAGEMENT	B3	20 SET/S	BUNK BED WITH MATTRESS 1000MM X 2000MM IN METAL FRAME FINISH	R6	24 SET/S	DELTA UPHOLSTERED SEAT AND BACK
CB	1 SET/S	CREDENZA BACK CABINET 400MM X 1800MM X 750MM HT. IN HPL FINISH	BT	36 SET/S	BED SIDE TABLE 450MM X 500MM X 600MM HT. IN HPL FINISH	C1	68 SET/S	THETA 2-2 MID BACK CHAIR WITH ADJUSTABLE ARM
MT1	1 SET/S	1000MM X 2000MM MEETING TABLE IN HPL FINISH WITH 100MM THK. TEMPERED GLASS TOP	CL	39 SET/S	SWING DOOR CLOSET 600MM X 1000MM X 1200MM X 1050MM HT. IN HPL FINISH	C5	1 SET/S	TULIP CHAIR
RC1	1 SET/S	RECEPTION COUNTER 600MM X 2850MM /ST 450MM X 2000MM X 1050MM HT. IN HPL FINISH	PT	13 SET/S	KITCHEN CAB. SET WITH HANGING CAB. IN SYNTHETIC STONE / HPL FINISH	C6	2 SET/S	MARGOLD LEATHERETTE SEAT
RC	1 SET/S	RECEPTION COUNTER 600MM X 2800MM X 1050MM HT. IN HPL FINISH	WT	1 SET/S	600MM X 1200MM X 750MM HT. TABLE IN HPL FINISH W/ 15x60 METAL LEGS	S8	2 SET/S	M SOFA 2 SEATER
LT2	1 SET/S	CENTER TABLE IN HPL FINISH 600MM X 900MM X 500MM HT. WITH METAL LEGS	S1	6 SET/S	SQUARE TABLE IN HPL FINISH 800MM X 800MM X 750MM HT. W/ METAL X-LEGS	S9	16 SET/S	M SOFA 1 SEATER
RT1	3 SET/S	ROUND TABLE IN HPL FINISH 750MM DIA. X 750MM HT. WITH METAL LEGS	MR	110 SET/S	METAL RACK 400MM X 1200MM X 1800MM HT. IN POWDER COATED FINISH			