

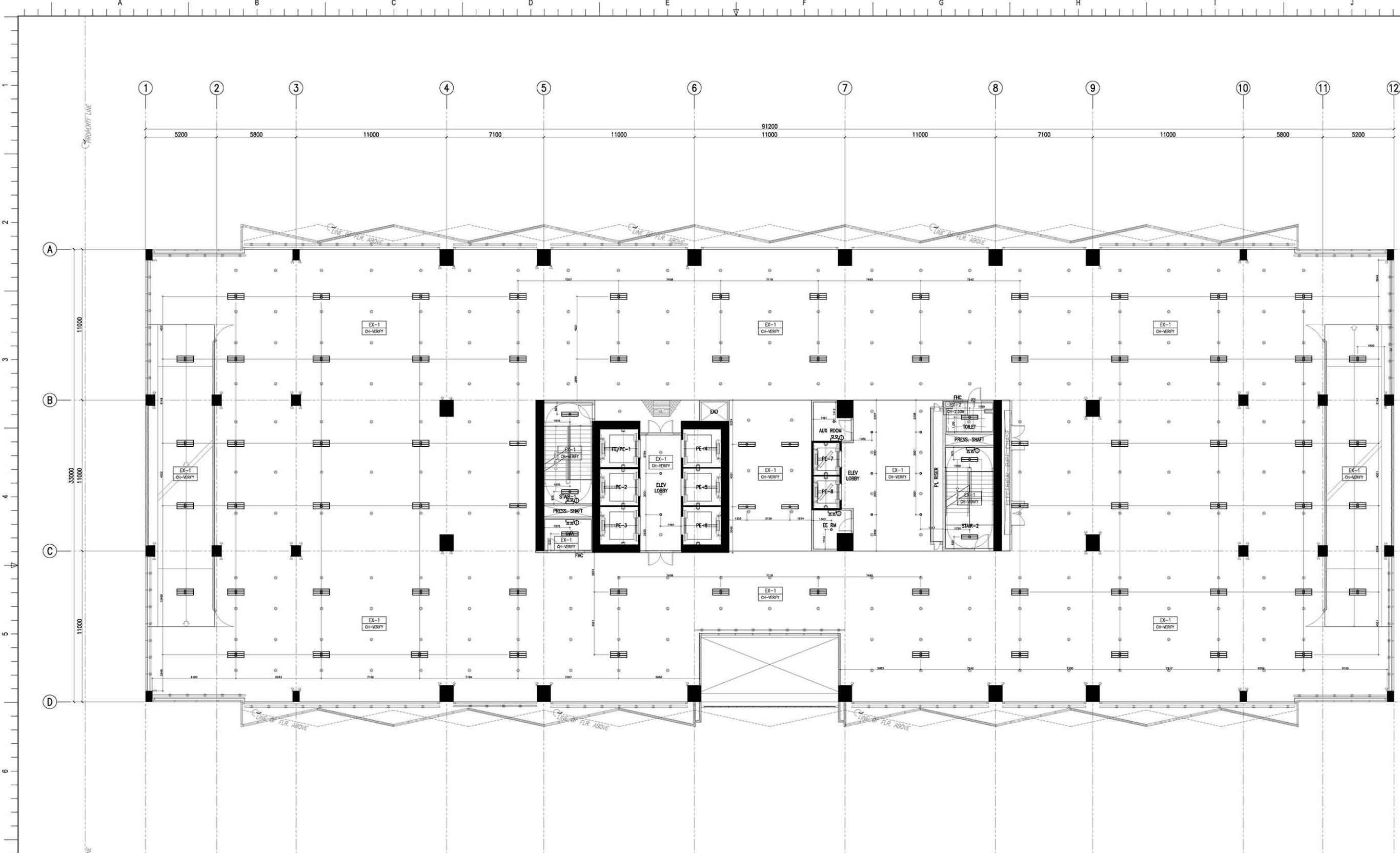
1 THIRD FLOOR REFLECTED CEILING PLAN  
 A-404 SCALE 1:100 M.

**NOTE:**  
 PURSUANT TO SECTION 4 OF ANNEX "A" OF THE REVISED IMPLEMENTING RULES AND REGULATION OF P.A. 918, APPROVAL BY THE AUTHORIZED DPWH OFFICIALS OF DETAILED ENGINEERING SURVEYS AND DESIGN UNDERTAKEN BY CONSULTANTS NEITHER DIMINISHES THE RESPONSIBILITY OF THE LATTER FOR THE TECHNICAL INTEGRITY OF THE SURVEYS AND DESIGN NOR TRANSFER ANY PART OF THAT RESPONSIBILITY TO THE APPROVING OFFICIALS.  
 THE DESIGN CONSULTANT SHALL BE HELD RESPONSIBLE FOR THE FAILURE OF THE FACILITY/ES / STRUCTURES DUE TO FAULTY DESIGN EXCEPT FOR THE CHANGES MADE WITHOUT THE CONFORMITY OF THE CONSULTANTS.

DRAWINGS AND SPECIFICATIONS DULY SIGNED, STAMPED OR SEALED, AS INSTRUMENTS OF SERVICE, ARE PROPERTY AND DOCUMENTS OF THE ARCHITECT, WHETHER THE OBJECT FOR WHICH THEY ARE MADE IS EXECUTED OR NOT. IT SHALL BE UNLAWFUL FOR ANY PERSON, WITHOUT THE WRITTEN CONSENT OF THE ARCHITECT OR AUTHOR OF SAID DOCUMENTS, TO DUPLICATE OR TO MAKE COPIES OF SAID DOCUMENTS FOR USE IN THE REPEITION OF AND FOR OTHER PROJECTS OR BUILDINGS, WHETHER EXECUTED PARTLY OR IN WHOLE.

CEILING FINISHES LEGEND :	
CEILING FINISHES	
C-1	LOW SHEEN ACRYLIC LATEX PAINT ON SMOOTH RUBBED FINISHED EXPOSED UNDERSIDE OF SLAB BEAM
C-2	LOW SHEEN ACRYLIC LATEX PAINT ON 12mm THK MOISTURE RESISTANT GYPSUM BOARD ON METAL CEILING JOIST
C-3	600x600 REGULAR ACOUSTIC TILES ON POWDER COATED ALUMINUM T RUNNERS
C-4	POWDER COATED ALUMINUM PANELS ON CONCEALED ALUMINUM RUNNERS
C-5	12mm THK GYPSUM BOARD IN HPL METAL FIN. AND 6mm THK GRAPHICOTE GLASS PANELS ON POWDER COATED ALUMINUM FRAMING WITH 6mm THK ACRYLIC DIFFUSERS
C-6	LOW SHEEN ACRYLIC LATEX PAINT ON 12mm THK GYPSUM BOARD ON METAL CEILING JOIST
C-7	ALUMINUM COMPOSITE CEILING PANEL
C-8	LOW SHEEN ACRYLIC LATEX PAINT ON 12mm THK GYPSUM BOARD HEXAGONAL ACCENT DROP CEILING 1.20m DIA x 150mm THK ON METAL HANGERS
EXC-1	(EXISTING) LOW SHEEN ACRYLIC LATEX PAINT ON SMOOTH RUBBED FINISHED EXPOSED UNDERSIDE OF SLAB BEAM
EXC-2	(EXISTING) LOW SHEEN ACRYLIC LATEX PAINT ON 12mm THK MOISTURE RESISTANT GYPSUM BOARD ON METAL CEILING JOIST
EXC-3	(EXISTING) LOW SHEEN ACRYLIC LATEX PAINT ON 12mm THK GYPSUM BOARD ON METAL CEILING JOIST
LIGHTING TYPES	
○	1x24W CFL IN 150MM Ø RECESSED MOUNTED FINLIGHT FIXTURE WITH GLASS COVER
▬	1x36W FLUORESCENT LAMP SURFACE MOUNTED
▬	2x36W FLUORESCENT LAMP SURFACE MOUNTED
—	COVE LIGHTING IN 1x36W FLUORESCENT LAMP
—	5W LED TAPE LIGHT
▬	4x18W TROFFER TYPE MATTE FINISH CROSS LOUVERS IN 600x600MM FIXTURE
▬	0.60M X 0.60M LED PANEL LIGHT
○	SURFACE MOUNTED CIRCULAR FLUORESCENT LAMP W/ DIFFUSER
○	ACCENT INDUSTRIAL LIGHTING FIXTURE
—	TRACKLIGHT
□	4-WAY CEILING CASSETTE TYPE FCU
□	2-WAY CEILING CASSETTE TYPE FCU
○	RECESSED SPRINKLER HEAD (CHROME FINISHED WITH ESCUTCHEON PLATE)
○	UPRIGHT SPRINKLER HEAD
C-0	<CEILING FINISH> <CEILING HEIGHT>

<b>TOKWING</b> CONSTRUCTION CORPORATION <small>305, Rodriguez Drive, Rodriguez Subdivision, Marikina City, Philippines</small>	<b>ENRIQUE O. OLANAN &amp; ASSOCIATES</b> ARCHITECTS ENGINEERS CONSULTANTS <small>305, Xaveriusville Square Condominium, 305 Xaveriusville Ave., Loyola Heights, Quezon City, Philippines</small>	CONSULTANT: ENRIQUE O. OLANAN <small>PROJECT MANAGER II</small>	CHECKED: JOSE MANUEL AGUIBALDO <small>PROJECT MANAGER II</small>	REVIEWED: ATTY. JOHNSON V. DOMINCO <small>PROJECT DIRECTOR</small>	RECOMMENDING APPROVAL: REYNOR R. IMPERIAL <small>DIRECTOR II</small>	APPROVED: LEO B. MALAGAR <small>ASSISTANT SECRETARY</small>	PROJECT: CONSTRUCTION OF FIT-OUT AND LANDSCAPE WORKS FOR THE TWENTY-THREE (23) STOREY PHILIPPINE STATISTICS AUTHORITY (PSA) OFFICE BUILDING WITH COVERED ROOF DECK	SHEET CONTENT: THIRD FLOOR REFLECTED CEILING PLAN	DESIGNER: E. OLANAN CAD: AET / ADI CHECKED: RIB / AET DATE: MAY 2021	REVISIONS:	SHEET NO.: A-404
		<small>DATE: 04/29/2023</small> <small>SCALE: 1:100</small>	<small>DATE: 07/20/2022</small> <small>SCALE: 1:100</small>	<small>DATE: 07/20/2022</small> <small>SCALE: 1:100</small>	<small>DATE: 07/20/2022</small> <small>SCALE: 1:100</small>	<small>DATE: 07/20/2022</small> <small>SCALE: 1:100</small>	<small>DATE: 07/20/2022</small> <small>SCALE: 1:100</small>	<small>DATE: 07/20/2022</small> <small>SCALE: 1:100</small>	LOCATION: PSA COMPLEX, EAST AVENUE, DILIMAN, QUEZON CITY	REVISIONS:	SHEET NO.: A-404



1 FOURTH FLOOR REFLECTED CEILING PLAN  
 A-405 SCALE 1:100 M.

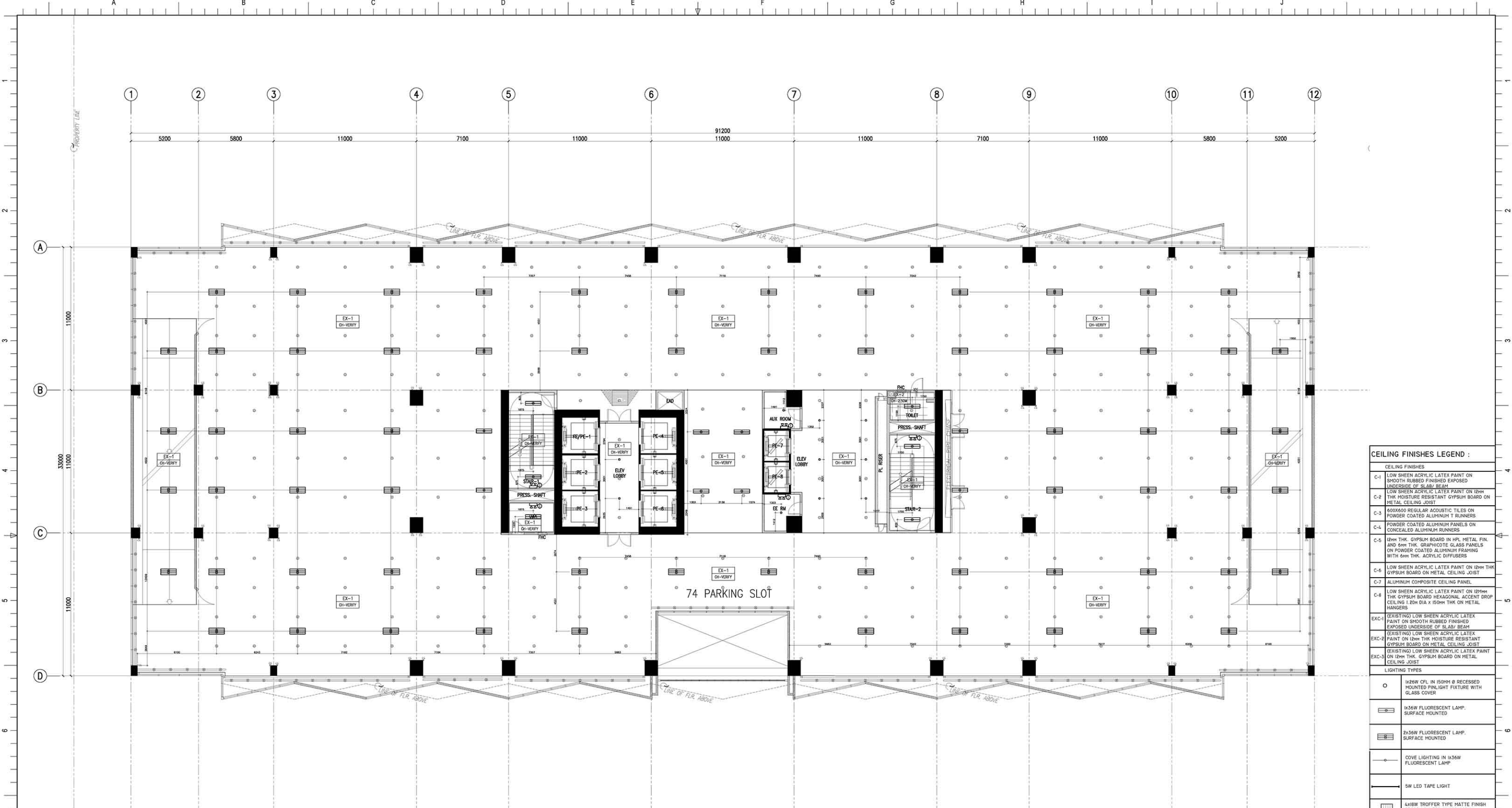
CEILING FINISHES LEGEND :	
CEILING FINISHES	
C-1	LOW SHEEN ACRYLIC LATEX PAINT ON SMOOTH RUBBED FINISHED EXPOSED UNDERSIDE OF SLAB BEAM
C-2	LOW SHEEN ACRYLIC LATEX PAINT ON 12mm THK MOISTURE RESISTANT GYPSUM BOARD ON METAL CEILING JOIST
C-3	600x600 REGULAR ACOUSTIC TILES ON POWDER COATED ALUMINUM T RUNNERS
C-4	POWDER COATED ALUMINUM PANELS ON CONCEALED ALUMINUM RUNNERS
C-5	12mm THK GYPSUM BOARD IN HPL METAL FIN. AND 6mm THK GRAPHICOTE GLASS PANELS ON POWDER COATED ALUMINUM FRAMING WITH 6mm THK ACRYLIC DIFFUSERS
C-6	LOW SHEEN ACRYLIC LATEX PAINT ON 12mm THK GYPSUM BOARD ON METAL CEILING JOIST
C-7	ALUMINUM COMPOSITE CEILING PANEL
C-8	LOW SHEEN ACRYLIC LATEX PAINT ON 12mm THK GYPSUM BOARD HEXAGONAL ACCENT DROP CEILING 120mm DIA X 150mm THK ON METAL HANGERS
EXC-1	(EXISTING) LOW SHEEN ACRYLIC LATEX PAINT ON SMOOTH RUBBED FINISHED EXPOSED UNDERSIDE OF SLAB BEAM
EXC-2	(EXISTING) LOW SHEEN ACRYLIC LATEX PAINT ON 12mm THK MOISTURE RESISTANT GYPSUM BOARD ON METAL CEILING JOIST
EXC-3	(EXISTING) LOW SHEEN ACRYLIC LATEX PAINT ON 12mm THK GYPSUM BOARD ON METAL CEILING JOIST
LIGHTING TYPES	
○	1x24W CFL IN 150MM Ø RECESSED MOUNTED PINLIGHT FIXTURE WITH GLASS COVER
▬	1x36W FLUORESCENT LAMP SURFACE MOUNTED
▬	2x36W FLUORESCENT LAMP SURFACE MOUNTED
—	COVE LIGHTING IN 1x36W FLUORESCENT LAMP
—	5W LED TAPE LIGHT
▬	4x18W TROFFER TYPE MATTE FINISH CROSS LOUVERS IN 600x600MM FIXTURE
▬	0.60M X 0.60M LED PANEL LIGHT
⊙	SURFACE MOUNTED CIRCULAR FLUORESCENT LAMP W/ DIFFUSER
⊙	ACCENT INDUSTRIAL LIGHTING FIXTURE
—	TRACKLIGHT
⊙	4-WAY CEILING CASSETTE TYPE FCU
⊙	2-WAY CEILING CASSETTE TYPE FCU
⊙	RECESSED SPRINKLER HEAD (CHROME FINISHED WITH ESCUTCHEON PLATE)
⊙	UPRIGHT SPRINKLER HEAD
C-0	<CEILING FINISH>
CH-0.00M	<CEILING HEIGHT>

NOTE:  
 PURSUANT TO SECTION 4 OF ANNEX "A" OF THE REVISED IMPLEMENTING RULES AND REGULATION OF R.A. 9164, APPROVAL BY THE AUTHORIZED DPWH OFFICIALS OF DETAILED ENGINEERING SURVEYS AND DESIGN UNDERTAKEN BY CONSULTANTS NEITHER DIMINISHES THE RESPONSIBILITY OF THE LATTER FOR THE TECHNICAL INTEGRITY OF THE SURVEYS AND DESIGN NOR TRANSFER ANY PART OF THAT RESPONSIBILITY TO THE APPROVING OFFICIALS.  
 THE DESIGN CONSULTANT SHALL BE HELD RESPONSIBLE FOR THE FAILURE OF THE FACILITY/ES / STRUCTURES DUE TO FAULTY DESIGN EXCEPT FOR THE CHANGES MADE WITHOUT THE CONFORMITY OF THE CONSULTANTS.

DRAWINGS AND SPECIFICATIONS DULY SIGNED, STAMPED OR SEALED, AS INSTRUMENTS OF SERVICE, ARE PROPERTY AND DOCUMENTS OF THE ARCHITECT, WHETHER THE OBJECT FOR WHICH THEY ARE MADE IS EXECUTED OR NOT. IT SHALL BE UNLAWFUL FOR ANY PERSON, WITHOUT THE WRITTEN CONSENT OF THE ARCHITECT OR AUTHOR OF SAID DOCUMENTS, TO DUPLICATE OR TO MAKE COPIES OF SAID DOCUMENTS FOR USE IN THE REPEITION OF AND FOR OTHER PROJECTS OR BUILDINGS, WHETHER EXECUTED PARTLY OR IN WHOLE.

		CONSULTANT:	CHECKED:	REVIEWED:	RECOMMENDING APPROVAL:	APPROVED:	PROJECT:	SHEET CONTENT:	DESIGNER:	REVISIONS:	SHEET NO.:						
		ENRIQUE O. OLANAN ARCHITECT PROJECT NO. 4443 DATE 04/29/2023 SHEET NO. 200881 DATE 07/20/2023 SHEET QTY 14 NO. 149-814	JOSE MANUEL AGUIBALDO PROJECT MANAGER II BUILDING & SPECIAL PROJECTS MANAGEMENT CLUSTER UNIFIED PROJECT MANAGEMENT OFFICE, DPWH	ATTY. JOHNSON V. DOMINDO PROJECT DIRECTOR BUILDING & SPECIAL PROJECTS MANAGEMENT CLUSTER UNIFIED PROJECT MANAGEMENT OFFICE, DPWH	REYNOR R. IMPERIAL DIRECTOR PLANNING AND MANAGEMENT SERVICE CO-HEAD, PSA-BCOM	SOCRATES L. RAMORRES DIRECTOR IV ASSISTANT NATIONAL STATISTICIAN AND ADMINISTRATIVE SERVICE HEAD, PSA-BCOM	LEO B. MALAGAR ASSISTANT SECRETARY DEPUTY NATIONAL STATISTICIAN CIVIL REGISTRATION & CENTRAL SUPPORT OFFICE	USEG CLAUDE DENNIS S. MAPA, PH. D. NATIONAL STATISTICIAN AND CIVIL REGISTRAR GENERAL PHILIPPINE STATISTICS AUTHORITY	CONSTRUCTION OF FIT-OUT AND LANDSCAPE WORKS FOR THE TWENTY-THREE (23) STOREY PHILIPPINE STATISTICS AUTHORITY (PSA) OFFICE BUILDING WITH COVERED ROOF DECK LOCATION: PSA COMPLEX, EAST AVENUE, DILIMAN, QUEZON CITY	FOURTH FLOOR REFLECTED CEILING PLAN	E. OLANAN AET / ADI RIB / AET MAY 2021	<table border="1"> <tr> <th>SYMBOL</th> <th>REMARK</th> <th>DATE</th> </tr> <tr> <td> </td> <td> </td> <td> </td> </tr> </table>	SYMBOL	REMARK	DATE		
SYMBOL	REMARK	DATE															





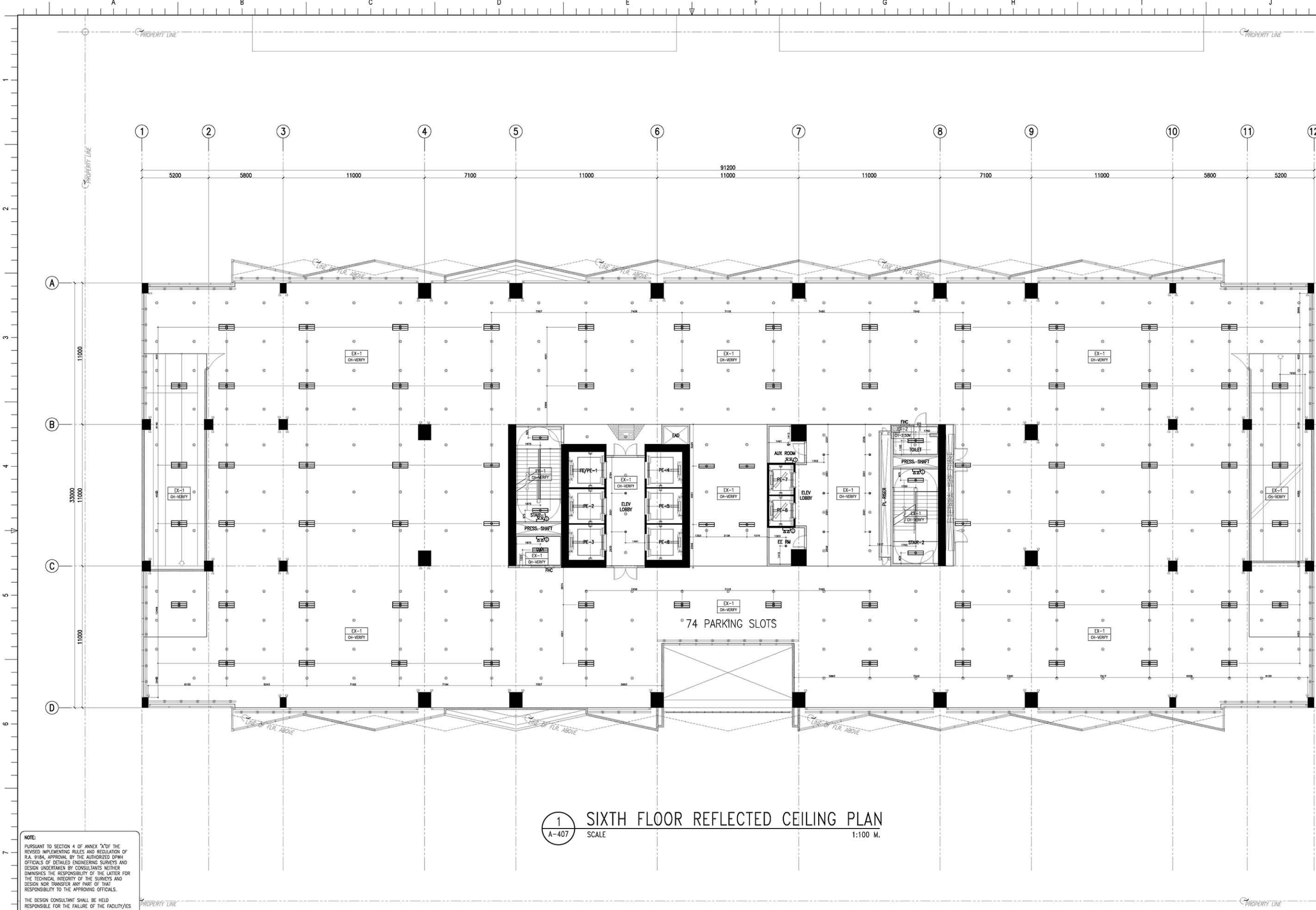
1  
A-406  
SCALE  
FIFTH FLOOR REFLECTED CEILING PLAN  
1:100 M.

CEILING FINISHES LEGEND :	
CEILING FINISHES	
C-1	LOW SHEEN ACRYLIC LATEX PAINT ON SMOOTH RUBBED FINISHED EXPOSED UNDERSIDE OF SLAB BEAM
C-2	LOW SHEEN ACRYLIC LATEX PAINT ON 12mm THK MOISTURE RESISTANT GYPSUM BOARD ON METAL CEILING JOIST
C-3	600x600 REGULAR ACOUSTIC TILES ON POWDER COATED ALUMINUM T RUNNERS
C-4	POWDER COATED ALUMINUM PANELS ON CONCEALED ALUMINUM RUNNERS
C-5	12mm THK GYPSUM BOARD IN HPL METAL FIN. AND 6mm THK GRAPHICOTE GLASS PANELS ON POWDER COATED ALUMINUM FRAMING WITH 6mm THK ACRYLIC DIFFUSERS
C-6	LOW SHEEN ACRYLIC LATEX PAINT ON 12mm THK GYPSUM BOARD ON METAL CEILING JOIST
C-7	ALUMINUM COMPOSITE CEILING PANEL
C-8	LOW SHEEN ACRYLIC LATEX PAINT ON 12mm THK GYPSUM BOARD HEXAGONAL ACCENT DROP CEILING 1.20m DIA x 150mm THK ON METAL HANGERS
EX-C-1	(EXISTING) LOW SHEEN ACRYLIC LATEX PAINT ON SMOOTH RUBBED FINISHED EXPOSED UNDERSIDE OF SLAB BEAM
EX-C-2	(EXISTING) LOW SHEEN ACRYLIC LATEX PAINT ON 12mm THK MOISTURE RESISTANT GYPSUM BOARD ON METAL CEILING JOIST
EX-C-3	(EXISTING) LOW SHEEN ACRYLIC LATEX PAINT ON 12mm THK GYPSUM BOARD ON METAL CEILING JOIST
LIGHTING TYPES	
○	1x26W CFL IN 150MM Ø RECESSED MOUNTED FINLIGHT FIXTURE WITH GLASS COVER
▬	1x36W FLUORESCENT LAMP SURFACE MOUNTED
▬	2x36W FLUORESCENT LAMP SURFACE MOUNTED
—	COVE LIGHTING IN 1x36W FLUORESCENT LAMP
—	5W LED TAPE LIGHT
▬	4x18W TROFFER TYPE MATTE FINISH CROSS LOUVERS IN 600x600MM FIXTURE
▬	0.60M X 0.60M LED PANEL LIGHT
○	SURFACE MOUNTED CIRCULAR FLUORESCENT LAMP W/ DIFFUSER
○	ACCENT INDUSTRIAL LIGHTING FIXTURE
—	TRACKLIGHT
□	4-WAY CEILING CASSETTE TYPE FCU
□	2-WAY CEILING CASSETTE TYPE FCU
○	RECESSED SPRINKLER HEAD (CHROME FINISHED WITH ESCUTCHEON PLATE)
○	UPRIGHT SPRINKLER HEAD
C-0	<CEILING FINISH>
CH-0.00M	<CEILING HEIGHT>

NOTE:  
PURSUANT TO SECTION 4 OF ANNEX "A" OF THE REVISED IMPLEMENTING RULES AND REGULATIONS OF R.A. 9164, APPROVAL BY THE AUTHORIZED DPWH OFFICIALS OF DETAILED ENGINEERING SURVEYS AND DESIGN UNDERTAKEN BY CONSULTANTS NEITHER DIMINISHES THE RESPONSIBILITY OF THE LATTER FOR THE TECHNICAL INTEGRITY OF THE SURVEYS AND DESIGN NOR TRANSFER ANY PART OF THAT RESPONSIBILITY TO THE APPROVING OFFICIALS.  
THE DESIGN CONSULTANT SHALL BE HELD RESPONSIBLE FOR THE FAILURE OF THE FACILITY/ES / STRUCTURES DUE TO FAULTY DESIGN EXCEPT FOR THE CHANGES MADE WITHOUT THE CONFORMITY OF THE CONSULTANTS.

DRAWINGS AND SPECIFICATIONS DULY SIGNED, STAMPED OR SEALED, AS INSTRUMENTS OF SERVICE, ARE PROPERTY AND DOCUMENTS OF THE ARCHITECT, WHETHER THE OBJECT FOR WHICH THEY ARE MADE IS EXECUTED OR NOT. IT SHALL BE UNLAWFUL FOR ANY PERSON, WITHOUT THE WRITTEN CONSENT OF THE ARCHITECT OR AUTHOR OF SAID DOCUMENTS, TO DUPLICATE OR TO MAKE COPIES OF SAID DOCUMENTS FOR USE IN THE REPEITION OF AND FOR OTHER PROJECTS OR BUILDINGS, WHETHER EXECUTED PARTLY OR IN WHOLE.

		CONSULTANT:	ENRIQUE O. OLANAN	CHECKED:	JOSUE MANUEL AGUIBALDO	REVIEWED:	ATTY. JOHNSON V. DOMINGO	RECOMMENDING APPROVAL:	REYNOR R. IMPERIAL	APPROVED:	USEG CLAUDE DENNIS S. MAPA, PH. D.	PROJECT:	CONSTRUCTION OF FIT-OUT AND LANDSCAPE WORKS FOR THE TWENTY-THREE (23) STOREY PHILIPPINE STATISTICS AUTHORITY (PSA) OFFICE BUILDING WITH COVERED ROOF DECK	SHEET CONTENT:	FIFTH FLOOR REFLECTED CEILING PLAN	DESIGNER:	E. OLANAN	REVISIONS:		SHEET NO.:	A-406
		PROJECT MANAGER II	PROJECT DIRECTOR	PLANNING AND MANAGEMENT SERVICE CO-HEAD, PSA-BCOM	ASSISTANT NATIONAL STATISTICIAN AND ADMINISTRATIVE SERVICE HEAD, PSA-BCOM	LEO B. MALAGAR	ASSISTANT SECRETARY DEPUTY NATIONAL STATISTICIAN CIVIL REGISTRATION & CENTRAL SUPPORT OFFICE	NATIONAL STATISTICIAN AND CIVIL REGISTRATION GENERAL, PHILIPPINE STATISTICS AUTHORITY	LOCATION:	PSA COMPLEX, EAST AVENUE, DILIMAN, QUEZON CITY	DATE:	MAY 2021	DATE:	MAY 2021	DATE:	MAY 2021					



1 SIXTH FLOOR REFLECTED CEILING PLAN  
 A-407 SCALE 1:100 M.

CEILING FINISHES LEGEND :	
CEILING FINISHES	
C-1	LOW SHEEN ACRYLIC LATEX PAINT ON SMOOTH RUBBED FINISHED EXPOSED UNDERSIDE OF SLAB BEAM
C-2	LOW SHEEN ACRYLIC LATEX PAINT ON 12MM THK MOISTURE RESISTANT GYPSUM BOARD ON METAL CEILING JOIST
C-3	600X600 REGULAR ACOUSTIC TILES ON POWDER COATED ALUMINUM T RUNNERS
C-4	POWDER COATED ALUMINUM PANELS ON CONCEALED ALUMINUM RUNNERS
C-5	12mm THK GYPSUM BOARD ON HPL METAL FIN. AND 6mm THK GRAPHICOTE GLASS PANELS ON POWDER COATED ALUMINUM FRAMING WITH 6mm THK ACRYLIC DIFFUSERS
C-6	LOW SHEEN ACRYLIC LATEX PAINT ON 12mm THK GYPSUM BOARD ON METAL CEILING JOIST
C-7	ALUMINUM COMPOSITE CEILING PANEL
C-8	LOW SHEEN ACRYLIC LATEX PAINT ON 12mm THK GYPSUM BOARD HEXAGONAL ACCENT DROP CEILING 1.20m DIA x 150mm THK ON METAL HANGERS
EXC-1	(EXISTING) LOW SHEEN ACRYLIC LATEX PAINT ON SMOOTH RUBBED FINISHED EXPOSED UNDERSIDE OF SLAB BEAM
EXC-2	(EXISTING) LOW SHEEN ACRYLIC LATEX PAINT ON 12mm THK MOISTURE RESISTANT GYPSUM BOARD ON METAL CEILING JOIST
EXC-3	(EXISTING) LOW SHEEN ACRYLIC LATEX PAINT ON 12mm THK GYPSUM BOARD ON METAL CEILING JOIST
LIGHTING TYPES	
	1x25W CFL IN 150MM Ø RECESSED MOUNTED PINLIGHT FIXTURE WITH GLASS COVER
	1x35W FLUORESCENT LAMP, SURFACE MOUNTED
	2x35W FLUORESCENT LAMP, SURFACE MOUNTED
	COVE LIGHTING IN 1x35W FLUORESCENT LAMP
	5W LED TAPE LIGHT
	4x18W TROFFER TYPE MATTE FINISH CROSS LOUVERS IN 600x600MM FIXTURE
	0.60M X 0.60M LED PANEL LIGHT
	SURFACE MOUNTED CIRCULAR FLUORESCENT LAMP W/ DIFFUSER
	ACCENT INDUSTRIAL LIGHTING FIXTURE
	TRACKLIGHT
	4-WAY CEILING CASSETTE TYPE FCU
	2-WAY CEILING CASSETTE TYPE FCU
	RECESSED SPRINKLER HEAD (CHROMED FINISHED WITH ESOUTCHON PLATE)
	UPRIGHT SPRINKLER HEAD
	<CEILING FINISH> <CEILING HEIGHT>

**NOTE:**  
 PURSUANT TO SECTION 4 OF ANNEX "A" OF THE REVISED IMPLEMENTING RULES AND REGULATIONS OF R.A. 9164, APPROVAL BY THE AUTHORIZED DPWH OFFICIALS OF DETAILED ENGINEERING SURVEYS AND DESIGN UNDERTAKEN BY CONSULTANTS NOTWITHSTANDING THE RESPONSIBILITY OF THE LATTER FOR THE TECHNICAL INTEGRITY OF THE SURVEYS AND DESIGN NOT TRANSFER ANY PART OF THAT RESPONSIBILITY TO THE APPROVING OFFICIALS.  
 THE DESIGN CONSULTANT SHALL BE HELD RESPONSIBLE FOR THE FAILURE OF THE FACILITY/ES / STRUCTURES DUE TO FAULTY DESIGN EXCEPT FOR THE CHANGES MADE WITHOUT THE CONFORMITY OF THE CONSULTANTS.

DRAWINGS AND SPECIFICATIONS DULY SIGNED, STAMPED OR SEALED, AS INSTRUMENTS OF SERVICE, ARE PROPERTY AND DOCUMENTS OF THE ARCHITECT, WHETHER THE OBJECT FOR WHICH THEY ARE MADE IS EXECUTED OR NOT. IT SHALL BE UNLAWFUL FOR ANY PERSON, WITHOUT THE WRITTEN CONSENT OF THE ARCHITECT OR AUTHOR OF SAID DOCUMENTS, TO DUPLICATE OR TO MAKE COPIES OF SAID DOCUMENTS FOR USE IN THE REPEITION OF AND FOR OTHER PROJECTS OR BUILDINGS, WHETHER EXECUTED PARTLY OR IN WHOLE.

 Suite 205, Xaverille Square Condominium, Bldg. 205, Xaverille Ave, Lapaz Heights, Quezon City Tel No. (02) 891 6018 Email: tokwingcorp@tokwing.com.ph	 ARCHITECTS ENGINEERS CONSULTANTS Suite 205, Xaverille Square Condominium, Bldg. 205, Xaverille Ave, Lapaz Heights, Quezon City Tel No. (02) 891 6018 Email: enriqueolanan@enriqueolanan.com.ph	CONSULTANT: ENRIQUE O. OLANAN ARCHITECT	CHECKED: JOSE MANUEL AGUILARDO PROJECT MANAGER & BUILDING & SPECIAL PROJECTS MANAGEMENT CLUSTER UNIFIED PROJECT MANAGEMENT OFFICE, DPWH	REVIEWED: ATTY. JOHNSON V. DOMINGO PROJECT DIRECTOR BUILDING & SPECIAL PROJECTS MANAGEMENT CLUSTER UNIFIED PROJECT MANAGEMENT OFFICE, DPWH	RECOMMENDING APPROVAL: REYNOR B. IMPERIAL DIRECTOR PLANNING AND MANAGEMENT SERVICE CO-HEAD, PSA-BCOM	APPROVED: SOCRATES L. RAMORRES DIRECTOR ASSISTANT NATIONAL STATISTICIAN FINANCE AND ADMINISTRATIVE SERVICE HEAD, PSA-BCOM	APPROVED: LEO B. MALAGAR ASSISTANT SECRETARY DEPUTY NATIONAL STATISTICIAN CIVIL REGISTRATION & GENERAL SUPPORT OFFICE	APPROVED: USBO, CLAIRE DENNIS B. MAPA, PH. D. NATIONAL STATISTICIAN AND CIVIL REGISTAR GENERAL PHILIPPINE STATISTICS AUTHORITY	PROJECT: CONSTRUCTION OF FIT-OUT AND LANDSCAPE WORKS FOR THE TWENTY-THREE (23) STOREY PHILIPPINE STATISTICS AUTHORITY (PSA) OFFICE BUILDING WITH COVERED ROOF DECK LOCATION: PSA COMPLEX, EAST AVENUE, DILIMAN, QUEZON CITY	SHEET CONTENT: SIXTH FLOOR REFLECTED CEILING PLAN	DESIGNER: E. OLANAN CAD: AET / ADI CHECKED: RIB / AET DATE: MAY 2021	REVISIONS: SYMBL, REMARK, DATE	SHEET NO.: A-407
		DRAWINGS AND SPECIFICATIONS DULY SIGNED, STAMPED OR SEALED, AS INSTRUMENTS OF SERVICE, ARE PROPERTY AND DOCUMENTS OF THE ARCHITECT, WHETHER THE OBJECT FOR WHICH THEY ARE MADE IS EXECUTED OR NOT. IT SHALL BE UNLAWFUL FOR ANY PERSON, WITHOUT THE WRITTEN CONSENT OF THE ARCHITECT OR AUTHOR OF SAID DOCUMENTS, TO DUPLICATE OR TO MAKE COPIES OF SAID DOCUMENTS FOR USE IN THE REPEITION OF AND FOR OTHER PROJECTS OR BUILDINGS, WHETHER EXECUTED PARTLY OR IN WHOLE.											